

103 02845

Longitude = 80° 38' 25.8"

4,365'

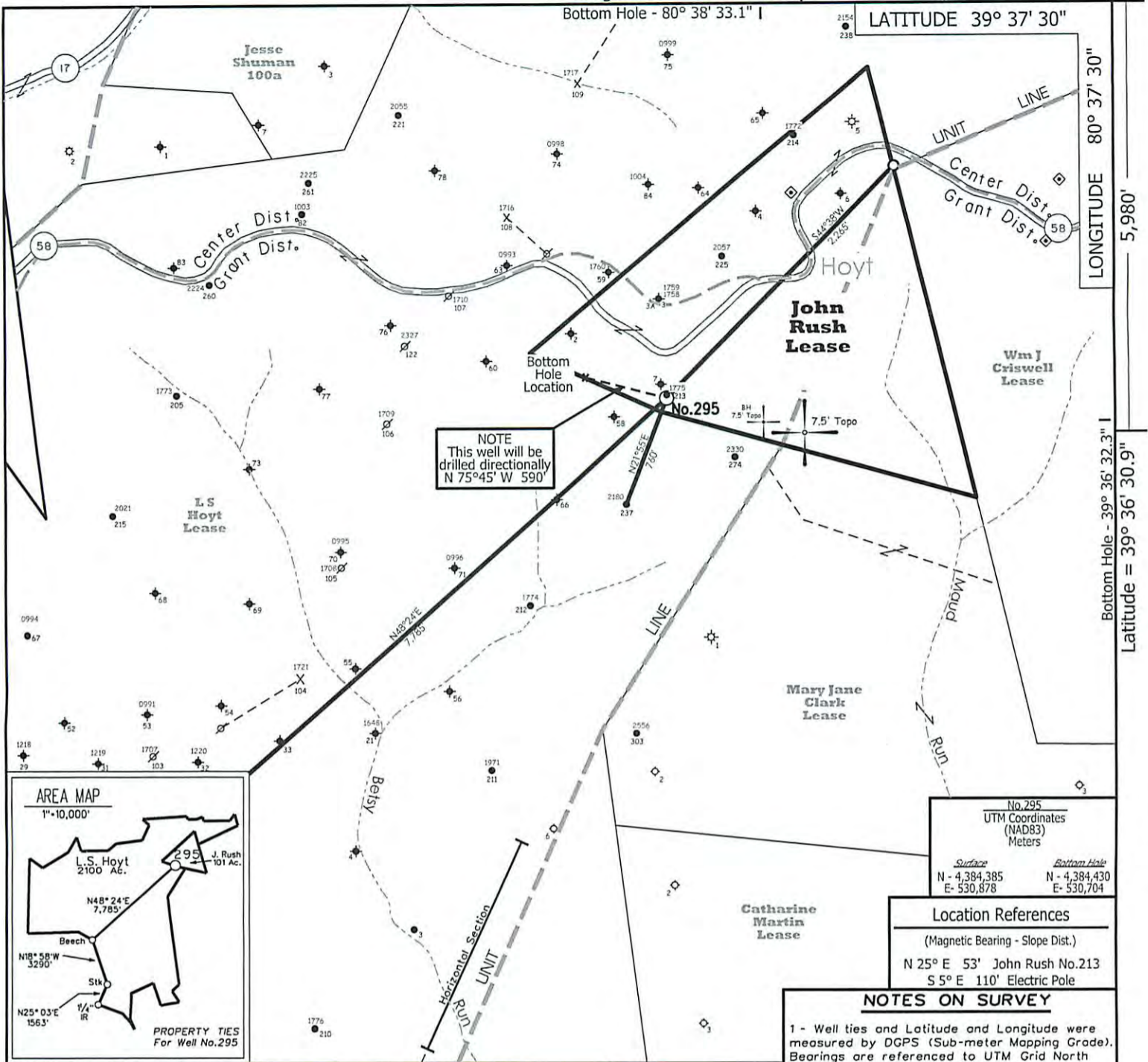
LATITUDE 39° 37' 30"

Bottom Hole - 80° 38' 33.1" I

LONGITUDE 80° 37' 30"

Bottom Hole - 39° 36' 32.3" I

Latitude = 39° 36' 30.9"



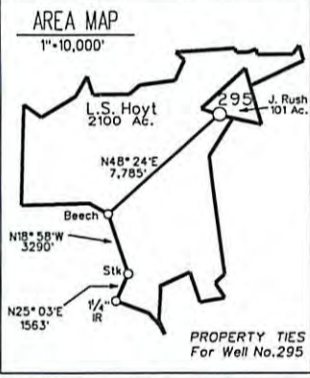
NOTE
This well will be drilled directionally
N 75°45' W 590'

No. 295
UTM Coordinates
(NAD83)
Meters

Surface	Bottom Hole
N - 4,384,385	N - 4,384,430
E - 530,878	E - 530,704

Location References
(Magnetic Bearing - Slope Dist.)
N 25° E 53' John Rush No. 213
S 5° E 110' Electric Pole

NOTES ON SURVEY
1 - Well ties and Latitude and Longitude were measured by DGPS (Sub-meter Mapping Grade). Bearings are referenced to UTM Grid North (Zone 17 North - NAD 1927).
2 - Surface owners and adjoiners information obtained from the Wetzel County Assessor's tax records.



◆ - DENOTES A POSSIBLE WATER SUPPLY SOURCE LOCATED FROM CIRCA 2003 AERIAL PHOTOGRAPHY - NOT BY SURVEY. OTHER SOURCES MAY BE PRESENT.
+ - DENOTES LOCATION OF WELL ON UNITED STATES TOPOGRAPHIC MAPS.

NO KNOWN WATER SUPPLY SOURCES ARE LOCATED WITHIN 1000' OF PROPOSED WELL

FILE NO. 1046-66
MAP NO. N S E W
SCALE 1" = 1000'
MINIMUM DEGREE OF ACCURACY Sub-Meter
PROVEN SOURCE OF ELEVATION DGPS Survey (Sub-Meter Mapping Grade)

I THE UNDERSIGNED, HEREBY CERTIFY THAT THIS PLAT IS CORRECT TO THE BEST OF MY KNOWLEDGE AND BELIEF AND SHOWS ALL THE INFORMATION REQUIRED BY LAW AND THE REGULATIONS ISSUED AND PRESCRIBED BY THE DEPARTMENT OF MINES.
(SIGNED) [Signature]
TIMOTHY P. ROUSH PS 793



WEST VIRGINIA
Division of Environmental Protection
Office of Oil and Gas
601 57th Street
Charleston, West Virginia 25301



DATE September 25, 2012
FARM John Rush No. 295
API WELL NO. 47-103-02845

WELL TYPE: OIL GAS LIQUID INJECTION WASTE DISPOSAL
(IF "GAS") PRODUCTION STORAGE DEEP SHALLOW
LOCATION: ELEVATION 1408' WATERSHED Betsy Run
DISTRICT Grant COUNTY Wetzel
QUADRANGLE Pine Grove 7.5'

SURFACE OWNER Dallison Lumber Inc. ACREAGE 98.45 Ac.
OIL & GAS ROYALTY OWNER HG Energy, LLC., et al LEASE ACREAGE 101 Ac.
LEASE NO. 99324-00

PROPOSED WORK: DRILL CONVERT DRILL DEEPER REDRILL FRACTURE OR STIMULATE PLUG OFF OLD FORMATION PERFORATE NEW FORMATION OTHER PHYSICAL CHANGE IN WELL (SPECIFY) Well will be drilled directionally N 75°45' W 590'

PLUG AND ABANDON CLEAN OUT AND REPLUG 3,650' MD
TARGET FORMATION Gordon ESTIMATED DEPTH 3,500' TVD

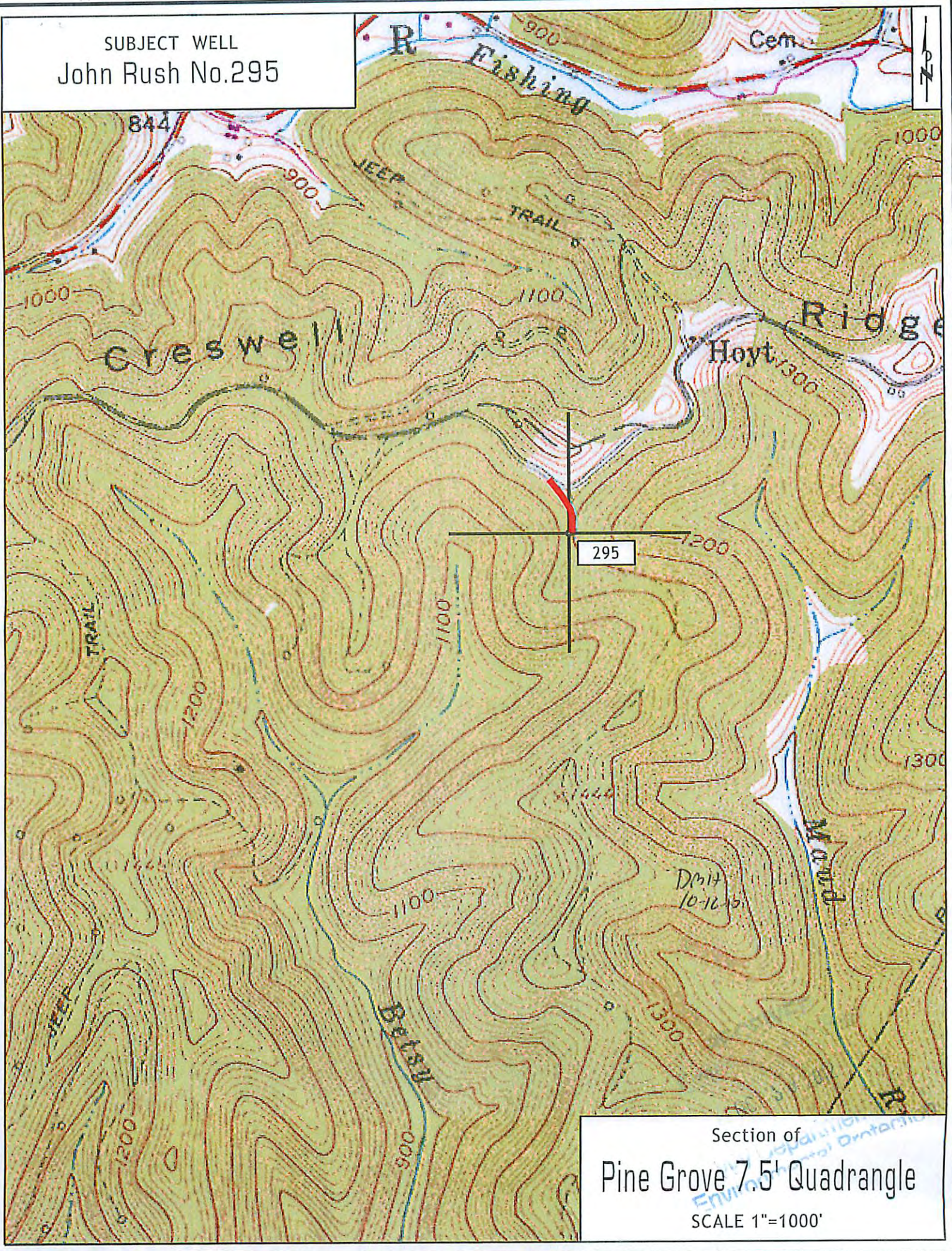
WELL OPERATOR HG Energy LLC. DESIGNATED AGENT Mike Kirsch
ADDRESS 5260 DuPont Road Parkersburg, WV 26101 ADDRESS 5260 DuPont Road Parkersburg, WV 26101

RECEIVED
OCT 30 2012
Environmental Protection

FORM IV-6

11/23/2012

SUBJECT WELL
John Rush No.295



Section of
Pine Grove 7.5' Quadrangle
SCALE 1"=1000'