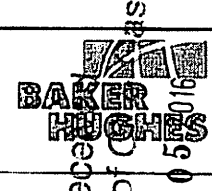


# HG ENERGY

Location: Welzel County, WV  
 Field: Welzel (UTM 17N NAD 27)  
 Facility: Long 409 Pad

Slot: Slot #04  
 Well: Long 409 S-4H  
 Wellbore: Long 409 S-4H PWB



### Location Information

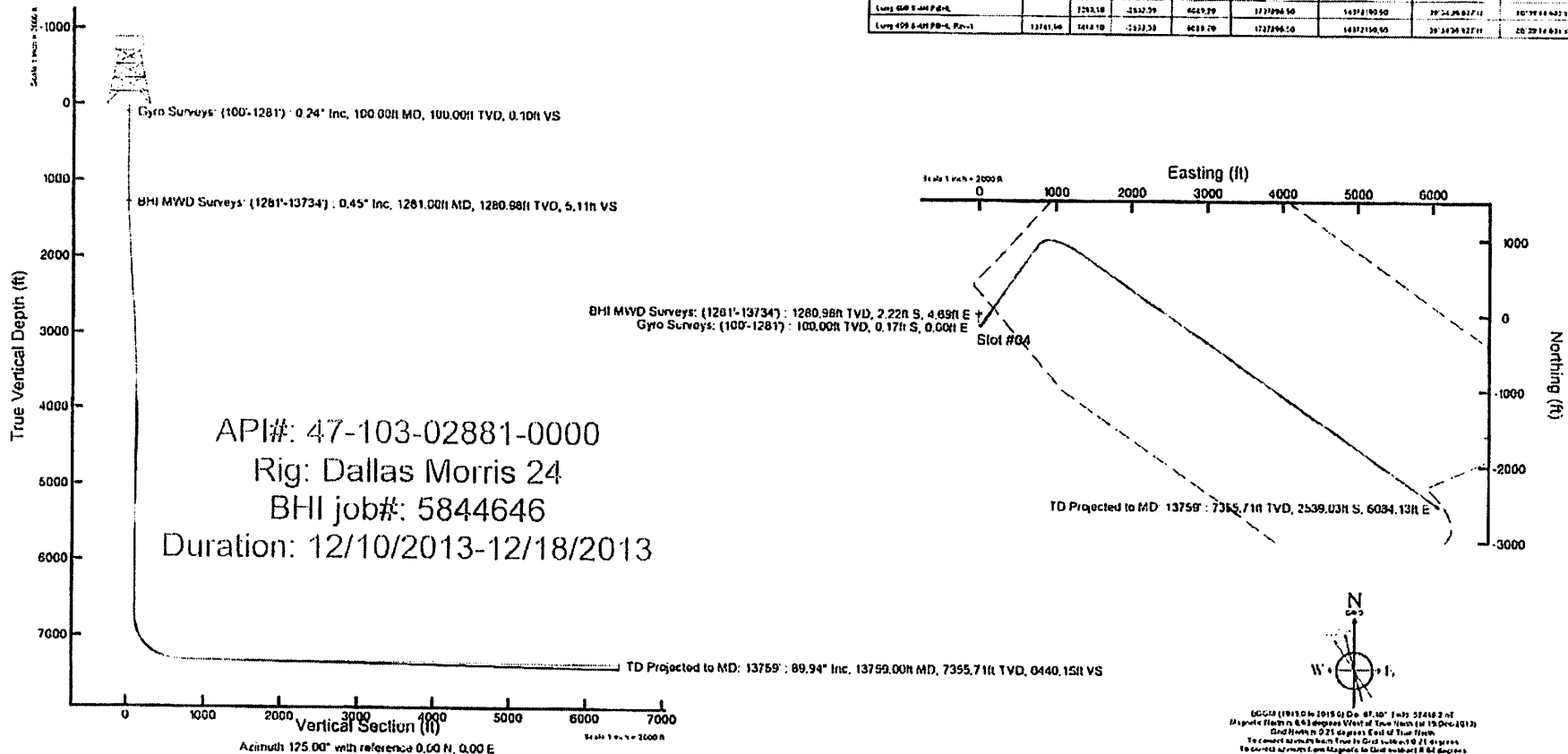
Facility Name					
Long 409 Pad					
		Grid East (US ft)	Grid North (US ft)	Latitude	Longitude
		1731860.700	14374712.900	39°35'02.180" N	80°40'31.597" W
Slot	Local E (ft)	Local N (ft)	Grid East (US ft)	Grid North (US ft)	Latitude
Slot #04	-30.61	-51.92	1731809.100	14374882.300	39°35'01.879" N
DM 24 (RT) to Mud line (At Slot: Slot #04)					
18ft					
Mean Sea Level to Mud line (At Slot: Slot #04)					
-1340ft					
DM 24 (RT) to Mean Sea Level					
1358ft					
Plot reference wellpath is Long 409 S-4H PWB Rev-C-0					
True vertical depths are referenced to DM 24 (RT)			Grid System: NAD27 / UTM Zone 17 North, US feet		
Measured depths are referenced to DM 24 (RT)			North Reference: Grid north		
DM 24 (RT) to Mean Sea Level: 1358 feet			Scale: True distance		
Mean Sea Level to Mud line (At Slot: Slot #04): -1340 feet			Depths are in feet		
Coordinates are in feet referenced to Slot			Created by: ftsjst on 19Dec2013		

### Well Profile Data

Design Comment	MD (ft)	Inc (")	Az (°)	TVD (ft)	Local N (ft)	Local E (ft)	CSI (ft/100ft)	VS (ft)
Run On	3415.00	2.000	103.490	3407.21	-107.83	11.04	0.00	108.31
Proj to BCH	3475.00	2.000	103.490	3467.18	-169.84	11.84	0.00	108.95
End of Drop	3575.00	0.000	34.812	3507.10	-171.51	12.13	2.00	108.31
End of Tangent	3600.00	0.000	34.812	3792.10	-171.51	12.13	0.00	108.31
End of Build	4052.40	25.240	34.812	4038.48	-126.80	43.36	10.00	108.14
End of Tangent	7074.18	25.240	34.812	6769.78	931.32	778.97	0.00	103.91
End of 3D Arc	7894.61	80.000	125.000	7297.77	820.14	1293.25	10.00	585.51
LP	8094.61	89.000	125.000	7315.00	723.48	1439.87	5.00	764.50
PBHL	13741.98	89.000	125.000	7414.10	-2532.39	6089.79	0.00	6440.99

### Targets

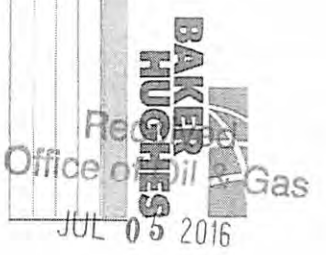
Area	TVD (ft)	Local N (ft)	Local E (ft)	CSI (ft/100ft)	Local N (ft)	Local E (ft)	Length (ft)
Long 409 S-4H PWB	7315.00	723.48	1439.87	173248.43	143149.74	173248.43	80°40'31.597" W
Long 409 S-4H PWB	7315.00	723.48	1439.87	173248.43	143149.74	173248.43	80°40'31.597" W
Long 409 S-4H PWB	7315.00	723.48	1439.87	173248.43	143149.74	173248.43	80°40'31.597" W
Long 409 S-4H PWB	7315.00	723.48	1439.87	173248.43	143149.74	173248.43	80°40'31.597" W



GGC# 101501015 Q1 D1 07.10' 1.45 57416 2 ft  
 Magnetic North is 6.61 degrees West of True North (at 19 Dec 2013)  
 Grid North is 0.25 degrees East of True North  
 To convert azimuth from True to Grid North add 0.25 degrees  
 To convert azimuth from Magnetic to Grid North add 6.61 degrees

# Actual Wellpath Report

Long 409 S-4H (AWP) Proj:13759  
Page 1 of 8



REFERENCE WELL IDENTIFICATION		Slot	Slot #14
Operator	IG ENERGY	Well	Long 409 S-4H
Area	Wetzel County, WV	Wellbore	Long 409 S-4H (AWB)
Field	Wetzel (UTM 178 NAD 27)		
Facility	Long 409 End		

PROJECTION INFORMATION		Software System	WellArchitect@ 4.0.1
Projection System	NAD27 / UTM Zone 17 North, US feet	User	frayzel
South Reference	Grid	Report Generated	09/Jun/2014 at 15:49
Scale	0.99961	Database Source file	V:\A_EasternUS\Long_409_S-4H_AWP_.xml
Convergence at slot	0.21° East		

VERTICAL DATUM		Local coordinates		Grid coordinates		Geographic coordinates	
Slot Location		North [ft]	East [ft]	Northing [US ft]	Latitude	Longitude	
Facility Reference Pt		-30.61	-51.62	14374682.30	39°35'02.180"N	80°40'31.597"W	
Field Reference Pt				1731860.70	39°35'02.180"N	80°40'31.597"W	

WELL HEAD DATA		Minimum curvature	
Calculation method		DM1 24 (KT) to Facility Vertical Datum	18.00ft
Horizontal Reference Pt	Slot	DM1 24 (RT) to Mean Sea Level	1358.00ft
Vertical Reference Pt	DM1 24 (RT)	DM1 24 (KT) to Mhd Line at Slot (Slot #14)	18.00ft
AWD Reference Pt	DM1 24 (RT)	Section Origin	N 0.00, E 0.00 ft
Field Vertical Reference	Mean Sea Level	Section Azimuth	125.00°











# Actual Wellpath Report

Long 409 S-4H (AWP) Proj:137559  
Page 7 of 8



Operator	HIG ENERGY	Well	Long 409 S-4H
Area	Wayz County, WV	Wellbore	Long 409 S-4H (AWP)
Field	Wayz (U/EAL 17N NAD 27)		
Facility	Long 409 Pad		

MD [ft]	Incubation [ft]	Asinh [ft]	TVD [ft]	Vert. Sect [ft]	North [ft]	East [ft]	Grid East [ft]	Grid North [ft]	Latitude	Longitude	Closure Dist [ft]	Closure Dir [ft]	Shape
12922.00	90.120	119.240	7355.71	5684.73	-2087.31	5152.26	1737592.22	14372595.31	39°44'41.045"N	80°59'22.723"W	5818.33	116.955	5.11
13016.00	90.060	121.990	7355.62	5727.56	-2120.53	5507.26	1737314.20	14372562.61	39°44'40.719"N	80°59'22.021"W	5901.40	111.059	4.77
13109.00	90.180	124.300	7355.49	5790.53	-2154.99	5859.99	1737166.91	14372528.13	39°44'40.377"N	80°59'21.351"W	5961.01	111.186	4.88
13173.00	90.220	124.870	7355.27	5854.53	-2191.86	6012.65	1737019.55	14372493.80	39°44'40.015"N	80°59'20.680"W	6015.27	111.327	0.75
13260.00	90.180	124.840	7355.05	5917.52	-2227.36	5664.35	1737421.23	14372455.81	39°44'39.657"N	80°59'20.022"W	6086.54	111.466	0.07
13300.00	90.220	125.520	7354.83	5981.52	-2264.71	5716.66	1737215.52	14372418.96	39°44'39.291"N	80°59'19.355"W	6188.71	111.607	1.08
13363.00	90.090	126.070	7354.68	6044.52	-2301.08	5767.76	1737394.60	14372382.13	39°44'38.925"N	80°59'18.701"W	6209.81	111.750	0.90
13426.00	89.940	128.010	7354.64	6107.47	-2339.02	5818.08	1737624.86	14372344.19	39°44'38.548"N	80°59'18.064"W	6310.01	112.004	2.19
13488.00	89.720	129.390	7354.82	6169.34	-2377.77	5868.45	1737873.24	14372305.46	39°44'38.163"N	80°59'17.418"W	6420.62	112.502	5.09
13551.00	89.750	127.820	7355.13	6232.22	-2417.06	5915.69	1737922.47	14372266.19	39°44'37.723"N	80°59'16.821"W	6530.13	112.224	2.40
13614.00	89.750	126.650	7355.42	6295.17	-2455.18	5965.85	1737972.61	14372228.08	39°44'37.304"N	80°59'16.182"W	6641.30	112.609	1.86
13677.00	89.910	125.570	7355.61	6358.16	-2492.31	6016.74	1738022.48	14372190.97	39°44'37.025"N	80°59'15.514"W	6752.51	112.809	1.73
13741.00	89.940	124.290	7355.68	6418.15	-2529.94	6064.47	1738070.19	14372158.35	39°44'36.701"N	80°59'14.939"W	6864.18	112.608	2.25
13799.00	89.940	124.290	7355.71	6480.15	-2569.03	6084.13	1738090.84	14372144.27	39°44'36.561"N	80°59'14.676"W	6976.67	112.652	0.00

Name	MD [ft]	TVD [ft]	North [ft]	East [ft]	Grid East [ft]	Grid North [ft]	Latitude	Longitude	Shape
Long 409 S-4H LP	7300.00	7300.00	727.48	1439.87	1733248.40	1437508.50	39°45'08.977"N	80°59'13.844"W	point
Long 409 S-4H LP-Rev-1	7315.00	7315.00	723.48	1439.87	1733248.40	1437508.50	39°45'08.977"N	80°59'13.844"W	point
Long 409 S-4H PHH1	7199.10	7199.10	-2342.39	6089.79	1737896.50	14372450.90	39°44'36.627"N	80°59'14.607"W	point
Long 409 S-4H PHH1-Rev-1	7411.10	7411.10	-2342.39	6089.79	1737896.50	14372450.90	39°44'36.627"N	80°59'14.607"W	point

Start MD [ft]	End MD [ft]	Positional Interfering Model	Log Name/Comment	Wellbore
18.00	1284.00	Generic gyro - non-rotating (Standard)	Gyro Surveys 12 1/2" Section (100'-1281')	Long 409 S-4H (AWP)
1281.00	1415.00	ISCVSA MWD, Rev 2 (Standard)	BMH MWS Surveys 12 1/4" Section (1281'-1285' - 1415')	Long 409 S-4H (AWP)
1415.00	13734.00	Navtrak (AT Curve Short Speed)	BMH AT Curve 8 1/2" Section (1415'-13734')	Long 409 S-4H (AWP)
13734.00	13759.00	Blind Drilling (Std)	Projection (to bit)	Long 409 S-4H (AWP)

Office of  
JUL 05 2016



# Actual Wellpath Report

Long 409 S-4H (AWP) Proj:13759'

Page 8 of 8



Received  
Office of Oil & Gas  
11/05/2015

## REFERENCE WELL PATH IDENTIFICATION

Operator	HIG ENERGY	Slot	Slot #04
Area	Wetzel County, WV	Well	Long 409 S-4H
Field	Wetzel (UTM 17N NAD 27)	Wellbore	Long 409 S-4H (AWB)
Facility	Long 409 Pad		

## COMMENTS

Wellpath general comments  
API#: 47-103-02881-0000  
Rig: Dallas Morris 24  
BHJ job#: 5844646  
Duration: 12/10/2013-12/18/2013  
Gyro Surveys: (100-1281)  
BHJ MWD Surveys: (1281-13754)  
TD Projected to MD: 13759'