

NOTES
 OWNERSHIP TAKEN FROM PUBLIC RECORDS OF WETZEL COUNTY, WV IN JANUARY, 2014.
 COORDINATES AND WELL TIES BASED UPON DIFFERENTIAL GPS MEASUREMENTS. WELL LOCATION REFERENCES ARE BASED UPON THE MAGNETIC MERIDIAN.

SURFACE TRACT TABLE

TRACT	OWNER	ACRES
S1	12-4.1 WHITEMAN DEVELOPMENT CO.	2.59 AC.
S2	7-142.1 T. EMCH, II, ET AL.	1.35 AC.
S3	7-142 P. WEISENBARGER	1.35 AC.
S4	12-3 T. COFFIELD, TRUST	0.98 AC.
S5	12-43.1 P. WEAVER, ET AL.	22.25 AC.
S6	12-41 P. WEAVER, ET AL.	3.39 AC.
S7	12-43.4 M.B. INVESTMENTS	0.99 AC.
S8	12-110 LACKAWANNA TARN, CO.	3.59 AC.
S9	12-72 P. WEAVER, ET AL.	0.50 AC.
S10	12-43.3 G. CROSS	0.13 AC.
S11	12-111 WV CONSERVATION COM.	1.0 AC.
S12	12-124 M.B. INVESTMENTS	2.23 AC.
S13	12-134.2 M.B. INVESTMENTS	0.23 AC.
S14	12-112.1 M.B. INVESTMENTS	0.82 AC.
S15	12-134.4 M.B. INVESTMENTS	3.51 AC.

NOTE: FORM WW-6RW (WELL LOCATION RESTRICTION WAIVER) SHOULD BE OBTAINED FROM THE SURFACE OWNER FOR THE TWO WATER WELLS ON WELL PAD.

NOTE: BORE PATH BASED ON GRID NORTH.

SURFACE HOLE
 UTM. NAD83, ZONE 17
 IN METERS
 N) 4,384,055.3
 E) 512,301.8
 UTM. NAD83, ZONE 17
 IN FEET
 N) 14,383,355
 E) 1,680,777

TARGET POINT 1
 UTM. NAD83, ZONE 17
 IN METERS
 N) 4,384,415.7
 E) 512,471.6
 UTM. NAD83, ZONE 17
 IN FEET
 N) 14,384,537
 E) 1,681,334

BOTTOM HOLE
 UTM. NAD83, ZONE 17
 IN METERS
 N) 4,386,247.5
 E) 511,619.2
 UTM. NAD83, ZONE 17
 IN FEET
 N) 14,390,547
 E) 1,678,537

LEGEND

- LEASED TRACTS
- INTERIOR MINERAL TRACTS
- SURFACE TRACTS
- HARD LEASE LINE

(+) DENOTES LOCATION ON UNITED STATES TOPOGRAPHIC MAPS

FILE NUMBER W0110309
 DRAWING NUMBER LACKAWANNA_WP_2H
 SCALE 1" = 1000'
 MINIMUM DEGREE OF ACCURACY 1/200
 PROVEN SOURCE SUBMETER MAPPING
 OF ELEVATION GRADE GPS

I, THE UNDERSIGNED, HEREBY CERTIFY THAT THIS PLAT IS CORRECT TO THE BEST OF MY KNOWLEDGE AND BELIEF AND SHOWS ALL THE INFORMATION REQUIRED BY LAW AND THE REGULATIONS ISSUED AND PRESCRIBED BY THE DEPARTMENT OF ENVIRONMENTAL PROTECTION

P.S. Jonathan N. White
 2122



WVDEP
 OFFICE OF OIL & GAS
 601 57TH STREET
 CHARLESTON, WV 25304

DATE: JANUARY 27, 2014

OPERATORS WELL NO. LACKAWANNA NO. 2H
 API WELL NO. _____

WELL TYPE: OIL GAS LIQUID INJECTION WASTE DISPOSAL
 (IF "GAS") PRODUCTION STORAGE DEEP SHALLOW
 LOCATION ELEVATION 1302' WATERSHED (HUC 10) OUTLET MIDDLE ISLAND CREEK (UNDEFINED)

DISTRICT MAGNOLIA COUNTY WETZEL
 QUADRANGLE PORTERS FALLS 7.5' LEASE NUMBER WV140-0017-002, WV140-0006-001, WV140-0010-002, WV140-0012-000

SURFACE OWNER M.B. INVESTMENTS ACREAGE 88.09
 OIL & GAS ROYALTY OWNER M.B. INVESTMENTS, ET AL LEASE ACREAGE 503.85

PROPOSED WORK: DRILL CONVERT DRILL DEEPER REDRILL FRACTURE OR STIMULATE PLUG OFF OLD FORMATION
 PERFORATE NEW FORMATION OTHER PHYSICAL CHANGE (SPECIFY) _____

TARGET FORMATION MARCELLUS PLUG & ABANDON CLEAN OUT & REPLUG
 WELL OPERATOR GASTAR EXPLORATION USA, INC. ESTIMATED DEPTH 6850' + Horizontal Leg

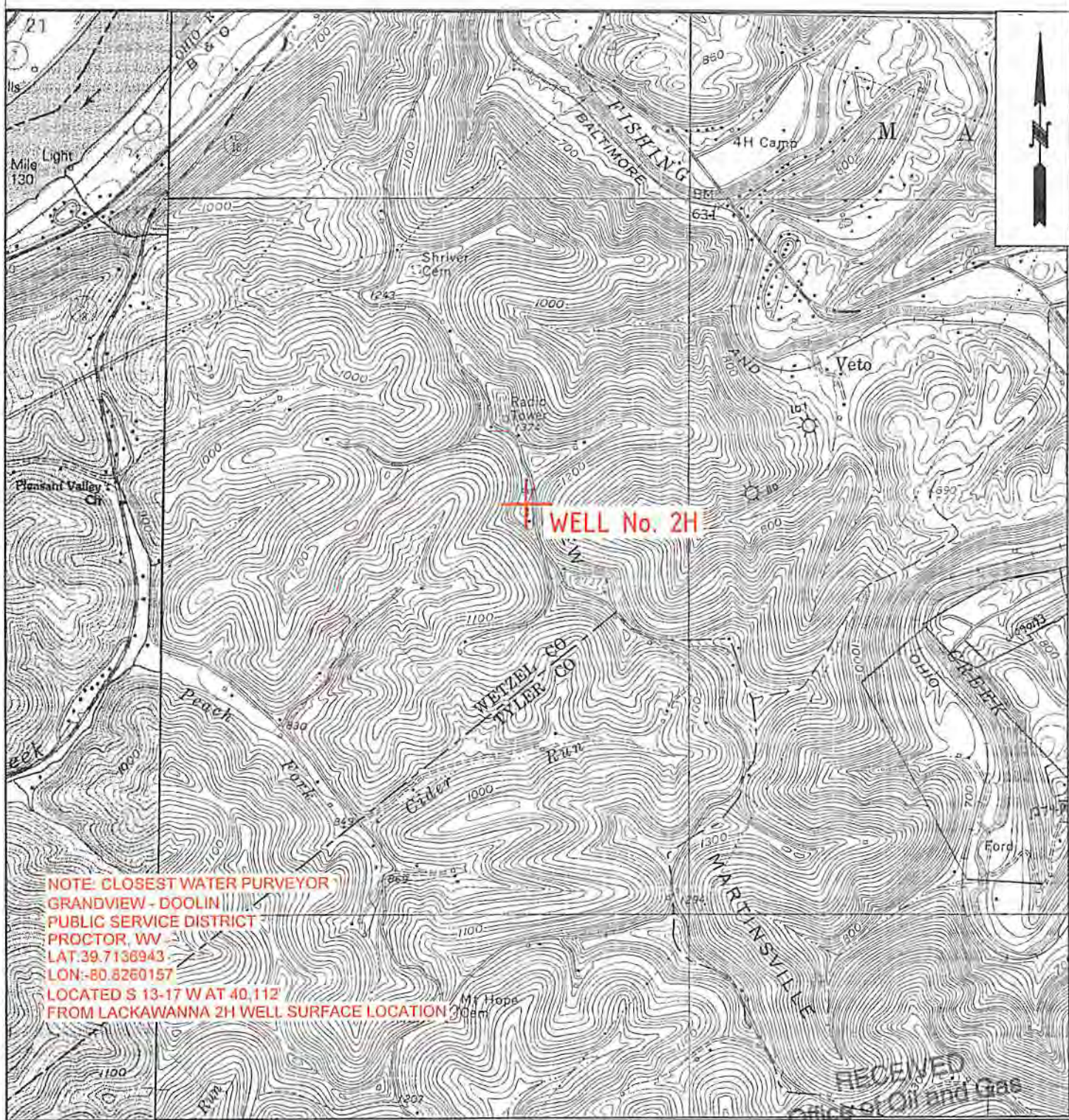
ADDRESS 229 W MAIN STREET, SUITE 301 CLARKSBURG WV, 26301 ADDRESS 229 W MAIN STREET, SUITE 301 CLARKSBURG WV, 26301

06/13/2014

WW-9

PROPOSED LACKAWANNA WELL No. 2H

4710302983
SUPPLEMENT PG-2



NOTE: CLOSEST WATER PURVEYOR
 GRANDVIEW - DOOLIN
 PUBLIC SERVICE DISTRICT
 PROCTOR, WV
 LAT: 39.7136943
 LON: -80.8260157
 LOCATED S 13-17 W AT 40.112'
 FROM LACKAWANNA 2H WELL SURFACE LOCATION

RECEIVED
 Office of Oil and Gas

DMH 2-20-14 WO110309	OPERATOR GASTAR EXPLORATION USA, Inc. 229 W Main Street, Suite 301 Clarksburg, WV 26301	TOPO SECTION PORTERS FALLS 7.5' SCALE: 1"=2000'	LEASE NAME LACKAWANNA DATE 01/27/14
	RECEIVED Wv Department of Environmental Protection		