



## Stone Energy Corporation

Mary Prospect  
Erlewine Pad  
Erlewine 2H - Slot 2H

OH

Design: 2H As Drilled

## Standard Survey Report

25 February, 2015



[www.scientificdrilling.com](http://www.scientificdrilling.com)

RECEIVED

WV Department of  
Environmental Protection  
06/02/2017



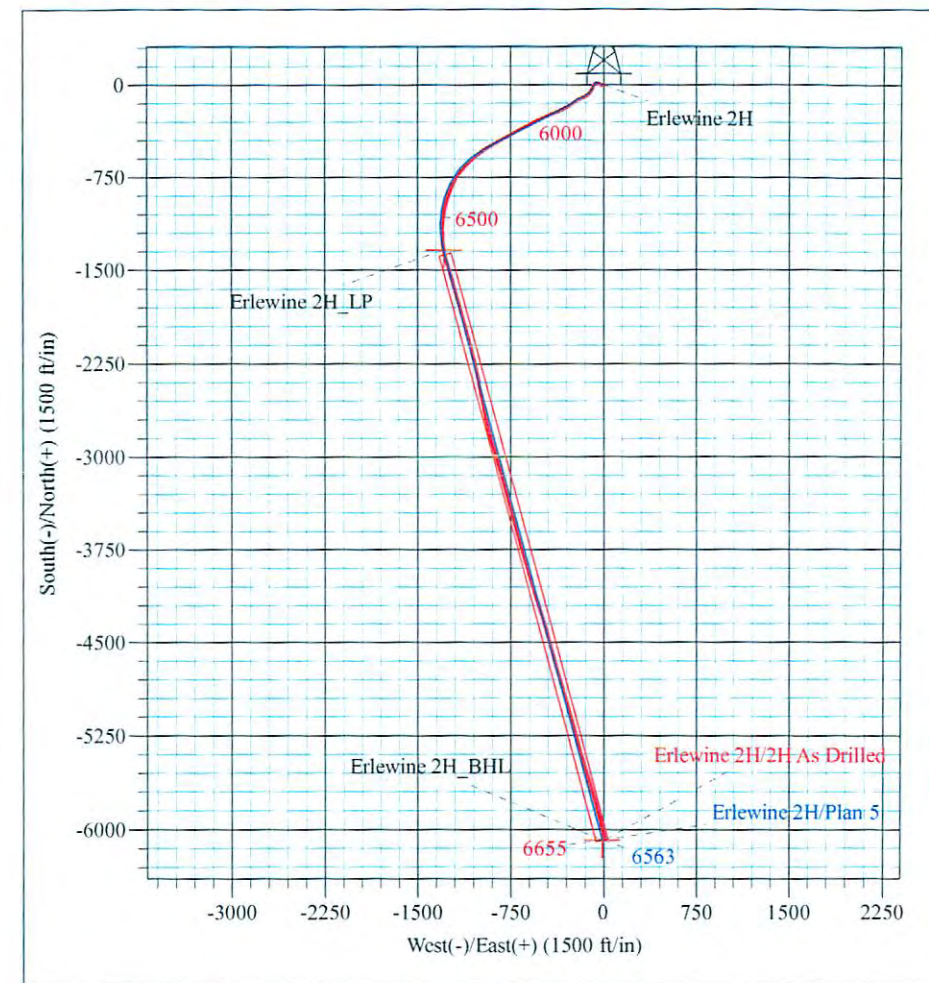
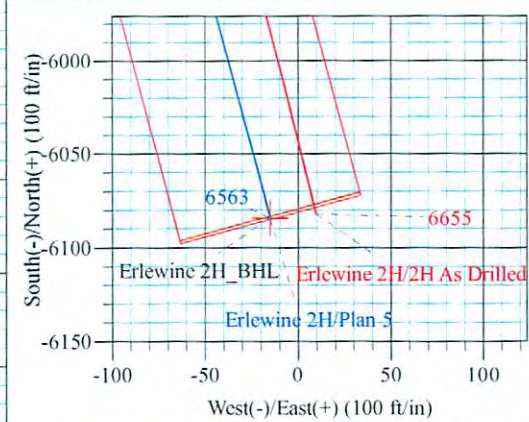
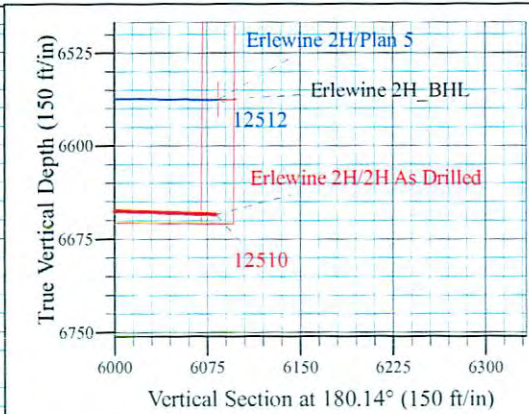
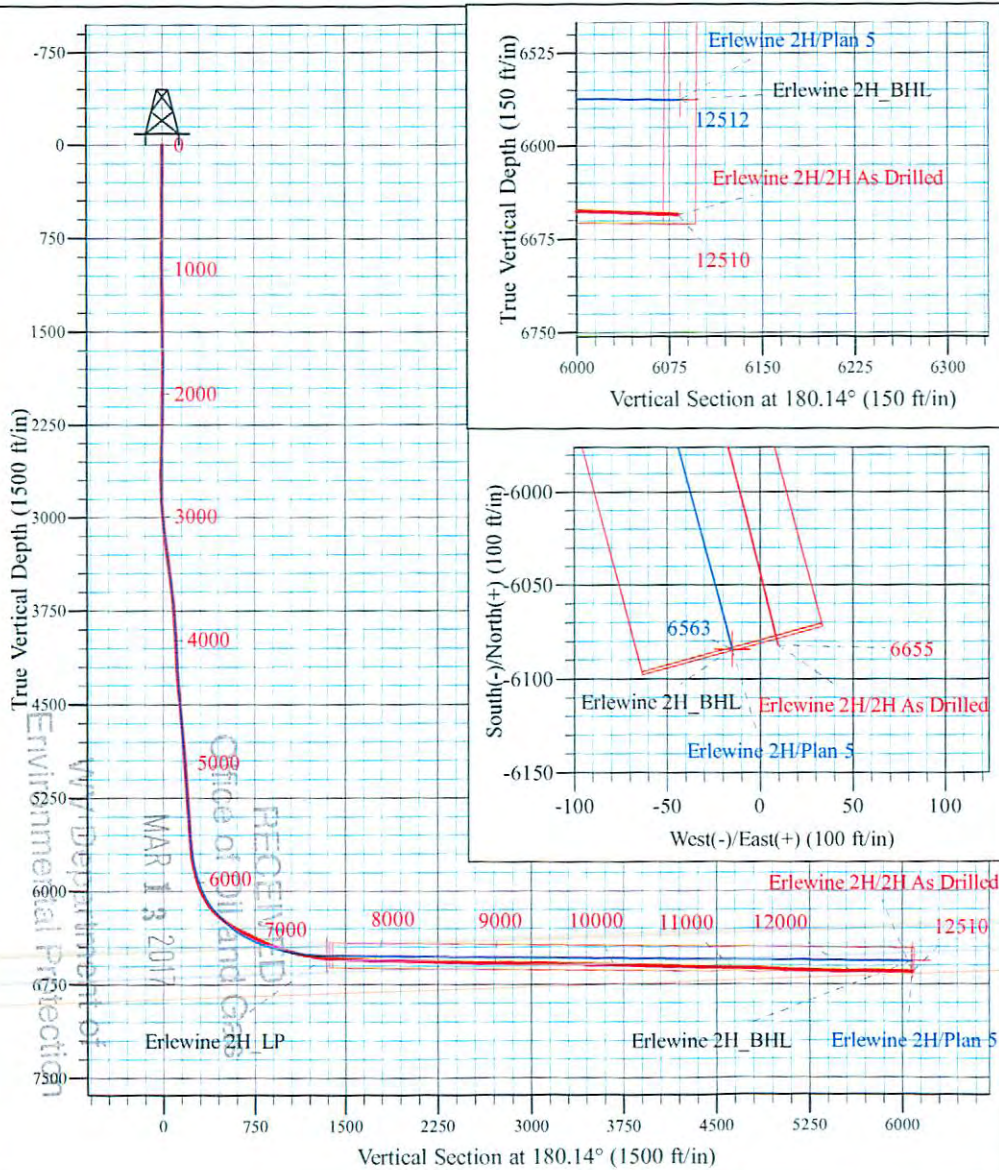
Erlewine Pad  
 Erlewine 2H  
 Plan 5  
 GL 1212' & KB 18' @ 1230.00ft (Saxon 141)  
 Mary Prospect

PROJECT DETAILS:  
 Geodetic System: US State Plane 1927 (Exact solution)  
 Datum: NAD 1927 (NADCON CONUS)  
 Ellipsoid: Clarke 1866  
 Zone: West Virginia North 4701  
 System Datum: Mean Sea Level



WELL DETAILS: Erlewine 2H

+N/-S	+E/-W	Northing	Easting	Latitude	Longitude
0.00	0.00	433657.00	1634869.00	39° 41' 0.235 N	80° 47' 50.627 W



Azimuths to Grid North  
 True North: 0.83°  
 Magnetic North: -6.81°  
 Magnetic Field  
 Strength: 52497.3nT  
 Dip Angle: 67.13°  
 Date: 1/23/2015  
 Model: USER DEFINED

Shane Rhodes  
 17:21, February 24 2015  
 Scientific Drilling International  
 124 Vista Drive  
 Charleroi, PA 15022



**Scientific Drilling International**  
Survey Report



<b>Company:</b>	Stone Energy Corporation	<b>Local Co-ordinate Reference:</b>	Well Erlewine 2H - Slot 2H
<b>Project:</b>	Mary Prospect	<b>TVD Reference:</b>	GL 1212' & KB 18' @ 1230.00ft (Saxon 141)
<b>Site:</b>	Erlewine Pad	<b>MD Reference:</b>	GL 1212' & KB 18' @ 1230.00ft (Saxon 141)
<b>Well:</b>	Erlewine 2H	<b>North Reference:</b>	Grid
<b>Wellbore:</b>	OH	<b>Survey Calculation Method:</b>	Minimum Curvature
<b>Design:</b>	2H As Drilled	<b>Database:</b>	Northeast District

<b>Project</b>	Mary Prospect, Wetzel County, West Virginia		
<b>Map System:</b>	US State Plane 1927 (Exact solution)	<b>System Datum:</b>	Mean Sea Level
<b>Geo Datum:</b>	NAD 1927 (NADCON CONUS)		
<b>Map Zone:</b>	West Virginia North 4701		

<b>Site</b>	Erlewine Pad				
<b>Site Position:</b>		<b>Northing:</b>	433,674.00 usft	<b>Latitude:</b>	39° 41' 0.404 N
<b>From:</b>	Map	<b>Easting:</b>	1,634,878.00 usft	<b>Longitude:</b>	80° 47' 50.515 W
<b>Position Uncertainty:</b>	0.00 ft	<b>Slot Radius:</b>	13-3/16 "	<b>Grid Convergence:</b>	-0.83 °

<b>Well</b>	Erlewine 2H - Slot 2H					
<b>Well Position</b>	<b>+N/-S</b>	0.00 ft	<b>Northing:</b>	433,657.00 usft	<b>Latitude:</b>	39° 41' 0.235 N
	<b>+E/-W</b>	0.00 ft	<b>Easting:</b>	1,634,869.00 usft	<b>Longitude:</b>	80° 47' 50.627 W
<b>Position Uncertainty</b>		0.00 ft	<b>Wellhead Elevation:</b>	0.00 ft	<b>Ground Level:</b>	1,212.00 ft

<b>Wellbore</b>	OH				
<b>Magnetics</b>	<b>Model Name</b>	<b>Sample Date</b>	<b>Declination (°)</b>	<b>Dip Angle (°)</b>	<b>Field Strength (nT)</b>
	User Defined	1/23/2015	-7.64	67.13	52,497

<b>Design</b>	2H As Drilled				
<b>Audit Notes:</b>					
<b>Version:</b>	1.0	<b>Phase:</b>	ACTUAL	<b>Tie On Depth:</b>	0.00
<b>Vertical Section:</b>	<b>Depth From (TVD) (ft)</b>	<b>+N/-S (ft)</b>	<b>+E/-W (ft)</b>	<b>Direction (°)</b>	
	0.00	0.00	0.00	180.14	

<b>Survey Program</b>	<b>Date</b>	2/25/2015			
<b>From (ft)</b>	<b>To (ft)</b>	<b>Survey (Wellbore)</b>	<b>Tool Name</b>	<b>Description</b>	
108.00	1,213.00	Survey #1 - 13-1/8" Surface Casing Gyro (	VES GyroFlex		
1,225.00	2,388.00	Survey #2 - SDI Gyro 12-1/4 Hole (OH)	SDI Standard Keeper 103	SDI Standard Wireline Keeper ver 1.0.3	
2,525.00	12,510.00	Survey #3 - SDI MWD 8-7/8 (OH)	SDI MWD	SDI MWD - Standard ver 1.0.1	

<b>Survey</b>											
<b>Measured Depth (ft)</b>	<b>Inclination (°)</b>	<b>Azimuth (°)</b>	<b>Vertical Depth (ft)</b>	<b>+N/-S (ft)</b>	<b>+E/-W (ft)</b>	<b>Vertical Section (ft)</b>	<b>Dogleg Rate (°/100usft)</b>	<b>Build Rate (°/100usft)</b>	<b>Turn Rate (°/100usft)</b>		
0.00	0.00	0.00	0.00	0.00	0.00	0.00	0.00	0.00	0.00		
108.00	0.46	43.57	108.00	0.31	0.30	-0.31	0.43	0.43	0.00		
<b>First VES Gyro @ 108 MD</b>											
208.00	0.44	38.32	208.00	0.91	0.81	-0.91	0.05	-0.02	-5.25		
308.00	0.32	11.94	307.99	1.48	1.11	-1.48	0.21	-0.12	-26.38		
408.00	0.35	16.42	407.99	2.05	1.25	-2.05	0.04	0.03	4.48		
508.00	0.35	23.13	507.99	2.62	1.46	-2.62	0.04	0.00	6.71		
608.00	0.24	37.36	607.99	3.07	1.71	-3.07	0.13	-0.11	14.23		
708.00	0.24	63.37	707.99	3.33	2.02	-3.33	0.11	-0.00	26.01		



Scientific Drilling International  
Survey Report



<b>Company:</b>	Stone Energy Corporation	<b>Local Co-ordinate Reference:</b>	Well Erlewine 2H - Slot 2H
<b>Project:</b>	Mary Prospect	<b>TVD Reference:</b>	GL 1212' & KB 18' @ 1230.00ft (Saxon 141)
<b>Site:</b>	Erlewine Pad	<b>MD Reference:</b>	GL 1212' & KB 18' @ 1230.00ft (Saxon 141)
<b>Well:</b>	Erlewine 2H	<b>North Reference:</b>	Grid
<b>Wellbore:</b>	OH	<b>Survey Calculation Method:</b>	Minimum Curvature
<b>Design:</b>	2H As Drilled	<b>Database:</b>	Northeast District

Measured Depth (ft)	Inclination (°)	Azimuth (°)	Vertical Depth (ft)	+N/-S (ft)	+E/-W (ft)	Vertical Section (ft)	Dogleg Rate (°/100usft)	Build Rate (°/100usft)	Turn Rate (°/100usft)	
808.00	0.20	63.04	807.99	3.50	2.36	-3.51	0.04	-0.04	-0.33	
908.00	0.28	24.72	907.99	3.80	2.62	-3.81	0.17	0.08	-38.32	
1,008.00	0.15	42.31	1,007.99	4.12	2.81	-4.13	0.14	-0.13	17.59	
1,108.00	0.26	39.95	1,107.98	4.39	3.05	-4.40	0.11	0.11	-2.36	
1,208.00	0.28	27.05	1,207.98	4.78	3.30	-4.79	0.06	0.02	-12.90	
1,213.00	0.30	21.20	1,212.98	4.81	3.31	-4.81	0.71	0.40	-117.00	
<b>Last VES Gyro @ 1213 MD</b>										
1,225.00	0.21	55.60	1,224.98	4.85	3.34	-4.86	1.45	-0.75	286.67	
<b>First SDI Gyro @ 1225 MD</b>										
1,319.00	1.07	171.73	1,318.98	4.08	3.61	-4.09	1.25	0.91	123.54	
1,412.00	0.77	234.72	1,411.97	2.86	3.23	-2.86	1.07	-0.32	67.73	
1,506.00	1.93	258.87	1,505.94	2.19	1.16	-2.19	1.35	1.23	25.69	
1,663.00	2.70	257.03	1,662.81	0.85	-5.04	-0.83	0.49	0.49	-1.17	
1,852.00	2.39	278.16	1,851.63	0.41	-13.28	-0.37	0.52	-0.16	11.18	
1,908.00	2.39	275.25	1,907.58	0.68	-15.60	-0.64	0.22	0.00	-5.20	
2,008.00	2.70	293.17	2,007.48	1.80	-19.84	-1.75	0.85	0.31	17.92	
2,108.00	2.83	293.47	2,107.37	3.71	-24.27	-3.65	0.13	0.13	0.30	
2,208.00	3.30	294.18	2,207.22	5.87	-29.16	-5.80	0.47	0.47	0.71	
2,308.00	3.62	294.44	2,307.04	8.35	-34.66	-8.27	0.32	0.32	0.26	
2,388.00	4.14	297.95	2,386.86	10.75	-39.51	-10.65	0.71	0.65	4.39	
<b>Last SDI Gyro @ 2388 MD</b>										
2,525.00	4.18	296.91	2,523.50	15.33	-48.33	-15.21	0.06	0.03	-0.76	
<b>First SDI MWD @ 2525 MD</b>										
2,619.00	4.33	282.00	2,617.24	17.62	-54.86	-17.48	1.18	0.16	-15.86	
2,714.00	3.76	260.94	2,712.01	17.87	-61.44	-17.72	1.66	-0.60	-22.17	
2,808.00	3.83	233.36	2,805.81	15.51	-67.00	-15.35	1.92	0.07	-29.34	
2,902.00	4.94	216.28	2,899.54	10.38	-71.92	-10.20	1.81	1.18	-18.17	
2,997.00	5.59	209.40	2,994.14	3.05	-76.61	-2.86	0.95	0.68	-7.24	
3,091.00	6.66	208.71	3,087.60	-5.72	-81.48	5.92	1.14	1.14	-0.73	
3,185.00	8.51	207.72	3,180.77	-16.66	-87.33	16.87	1.97	1.97	-1.05	
3,279.00	8.84	205.79	3,273.70	-29.32	-93.71	29.55	0.47	0.35	-2.05	
3,375.00	9.27	208.51	3,368.50	-42.76	-100.61	43.00	0.63	0.45	2.83	
3,469.00	9.22	217.35	3,461.29	-55.40	-108.79	55.66	1.51	-0.05	9.40	
3,563.00	9.73	225.99	3,554.01	-66.90	-119.07	67.20	1.61	0.54	9.19	
3,657.00	9.48	229.53	3,646.69	-77.45	-130.68	77.77	0.68	-0.27	3.77	
3,751.00	9.10	233.72	3,739.46	-86.87	-142.56	87.22	0.83	-0.40	4.46	
3,845.00	8.32	240.37	3,832.38	-94.63	-154.46	95.01	1.35	-0.83	7.07	
3,940.00	8.32	252.14	3,926.38	-100.14	-166.98	100.55	1.79	0.00	12.39	
4,034.00	7.96	247.38	4,019.44	-104.73	-179.46	105.17	0.81	-0.38	-5.06	
4,128.00	7.69	246.93	4,112.56	-109.69	-191.26	110.16	0.29	-0.29	-0.48	
4,222.00	6.99	243.32	4,205.79	-114.73	-202.15	115.22	0.89	-0.74	-3.84	
4,316.00	7.54	242.23	4,299.04	-120.17	-212.72	120.69	0.60	0.59	-1.16	
4,410.00	8.73	235.89	4,392.09	-127.04	-224.08	127.59	1.58	1.27	-6.74	
4,504.00	8.66	232.94	4,485.01	-135.31	-235.64	135.89	0.48	-0.07	-3.14	

RECEIVED  
Office of Oil and Gas  
MAR 13 2017  
WV Department of Environmental Protection  
COMPASS 5000.1 Build 74



Scientific Drilling International  
Survey Report



<b>Company:</b>	Stone Energy Corporation	<b>Local Co-ordinate Reference:</b>	Well Erlewine 2H - Slot 2H
<b>Project:</b>	Mary Prospect	<b>TVD Reference:</b>	GL 1212' & KB 18' @ 1230.00ft (Saxon 141)
<b>Site:</b>	Erlewine Pad	<b>MD Reference:</b>	GL 1212' & KB 18' @ 1230.00ft (Saxon 141)
<b>Well:</b>	Erlewine 2H	<b>North Reference:</b>	Grid
<b>Wellbore:</b>	OH	<b>Survey Calculation Method:</b>	Minimum Curvature
<b>Design:</b>	2H As Drilled	<b>Database:</b>	Northeast District

Measured Depth (ft)	Inclination (°)	Azimuth (°)	Vertical Depth (ft)	+N/-S (ft)	+E/-W (ft)	Vertical Section (ft)	Dogleg Rate (°/100usft)	Build Rate (°/100usft)	Turn Rate (°/100usft)
4,598.00	9.03	229.99	4,577.89	-144.32	-246.94	144.92	0.62	0.39	-3.14
4,692.00	9.14	232.70	4,670.71	-153.58	-258.52	154.22	0.47	0.12	2.88
4,788.00	9.86	240.32	4,765.40	-162.27	-271.73	162.94	1.51	0.75	7.94
4,882.00	9.59	240.50	4,858.05	-170.11	-285.54	170.82	0.29	-0.29	0.19
4,976.00	8.85	241.76	4,950.84	-177.39	-298.72	178.13	0.82	-0.79	1.34
5,070.00	8.00	238.74	5,043.82	-184.21	-310.69	184.97	1.02	-0.90	-3.21
5,164.00	9.08	240.64	5,136.78	-191.24	-322.74	192.03	1.19	1.15	2.02
5,258.00	8.63	243.60	5,229.66	-198.01	-335.52	198.84	0.68	-0.48	3.15
5,352.00	8.55	245.95	5,322.60	-203.99	-348.22	204.85	0.38	-0.09	2.50
5,447.00	8.05	242.10	5,416.61	-209.98	-360.55	210.87	0.79	-0.53	-4.05
5,509.00	7.79	242.24	5,478.02	-213.97	-368.10	214.88	0.42	-0.42	0.23
5,539.00	8.04	243.18	5,507.73	-215.87	-371.78	216.78	0.94	0.83	3.13
5,571.00	8.62	242.76	5,539.39	-217.97	-375.91	218.90	1.82	1.81	-1.31
5,603.00	9.45	244.74	5,571.00	-220.19	-380.41	221.13	2.77	2.59	6.19
5,634.00	11.83	247.98	5,601.46	-222.47	-385.66	223.42	7.91	7.68	10.45
5,667.00	14.87	250.62	5,633.57	-225.14	-392.79	226.11	9.39	9.21	8.00
5,698.00	16.55	251.39	5,663.41	-227.87	-400.73	228.86	5.46	5.42	2.48
5,730.00	18.38	250.98	5,693.93	-230.97	-409.82	231.98	5.73	5.72	-1.28
5,762.00	19.77	248.36	5,724.17	-234.61	-419.62	235.65	5.10	4.34	-8.19
5,794.00	22.11	247.26	5,754.06	-238.94	-430.21	240.00	7.41	7.31	-3.44
5,825.00	24.70	247.05	5,782.50	-243.72	-441.55	244.81	8.36	8.35	-0.68
5,857.00	27.15	246.53	5,811.28	-249.23	-454.41	250.35	7.69	7.66	-1.63
5,889.00	29.45	245.42	5,839.46	-255.41	-468.26	256.57	7.37	7.19	-3.47
5,921.00	31.13	243.77	5,867.09	-262.34	-482.84	263.53	5.86	5.25	-5.16
5,953.00	32.83	242.96	5,894.23	-269.94	-497.98	271.17	5.48	5.31	-2.53
5,984.00	34.45	243.31	5,920.04	-277.70	-513.30	278.97	5.26	5.23	1.13
6,016.00	36.37	243.51	5,946.12	-286.00	-529.88	287.31	6.01	6.00	0.63
6,048.00	38.74	242.83	5,971.48	-294.81	-547.29	296.15	7.52	7.41	-2.13
6,079.00	41.41	242.38	5,995.20	-303.99	-565.00	305.38	8.66	8.61	-1.45
6,111.00	44.46	241.72	6,018.63	-314.21	-584.25	315.65	9.63	9.53	-2.06
6,142.00	47.01	241.59	6,040.26	-324.75	-603.79	326.24	8.23	8.23	-0.42
6,174.00	49.75	241.90	6,061.52	-336.07	-624.86	337.61	8.59	8.56	0.97
6,206.00	51.78	241.49	6,081.75	-347.82	-646.68	349.42	6.42	6.34	-1.28
6,238.00	54.18	241.65	6,101.02	-359.99	-669.15	361.63	7.51	7.50	0.50
6,270.00	55.86	241.29	6,119.37	-372.51	-692.18	374.21	5.33	5.25	-1.13
6,302.00	58.24	241.31	6,136.77	-385.40	-715.73	387.17	7.44	7.44	0.06
6,334.00	60.12	241.26	6,153.16	-398.61	-739.83	400.43	5.88	5.88	-0.16
6,366.00	62.49	241.21	6,168.53	-412.11	-764.44	414.00	7.41	7.41	-0.16
6,397.00	64.62	241.09	6,182.33	-425.51	-788.75	427.45	6.88	6.87	-0.39
6,429.00	66.38	240.85	6,195.60	-439.64	-814.21	441.64	5.54	5.50	-0.75
6,461.00	66.78	240.64	6,208.32	-453.99	-839.83	456.05	1.39	1.25	-0.66
6,493.00	66.98	240.26	6,220.89	-468.50	-865.43	470.63	1.26	0.63	-1.19
6,525.00	67.17	240.02	6,233.35	-483.17	-890.99	485.37	0.91	0.59	-0.75

RECEIVED  
Office of Oil and Gas  
MAR 13 2017



Scientific Drilling International  
Survey Report



<b>Company:</b>	Stone Energy Corporation	<b>Local Co-ordinate Reference:</b>	Well Erlewine 2H - Slot 2H
<b>Project:</b>	Mary Prospect	<b>TVD Reference:</b>	GL 1212' & KB 18' @ 1230.00ft (Saxon 141)
<b>Site:</b>	Erlewine Pad	<b>MD Reference:</b>	GL 1212' & KB 18' @ 1230.00ft (Saxon 141)
<b>Well:</b>	Erlewine 2H	<b>North Reference:</b>	Grid
<b>Wellbore:</b>	OH	<b>Survey Calculation Method:</b>	Minimum Curvature
<b>Design:</b>	2H As Drilled	<b>Database:</b>	Northeast District

Measured Depth (ft)	Inclination (°)	Azimuth (°)	Vertical Depth (ft)	+N/-S (ft)	+E/-W (ft)	Vertical Section (ft)	Dogleg Rate (°/100usft)	Build Rate (°/100usft)	Turn Rate (°/100usft)
6,557.00	67.28	239.18	6,245.74	-498.10	-916.44	500.36	2.44	0.34	-2.63
6,587.00	67.79	239.14	6,257.20	-512.32	-940.24	514.63	1.70	1.70	-0.13
6,618.00	68.26	238.74	6,268.80	-527.15	-964.87	529.53	1.93	1.52	-1.29
6,648.00	69.48	235.45	6,279.62	-542.35	-988.35	544.79	11.01	4.07	-10.97
6,678.00	70.49	232.78	6,289.89	-558.87	-1,011.19	561.36	9.01	3.37	-8.90
6,709.00	71.14	229.55	6,300.08	-577.23	-1,033.99	579.78	10.06	2.10	-10.42
6,739.00	71.67	227.68	6,309.64	-596.03	-1,055.32	598.63	6.17	1.77	-6.23
6,769.00	71.97	226.18	6,319.01	-615.49	-1,076.14	618.14	4.85	1.00	-5.00
6,800.00	71.74	224.35	6,328.66	-636.22	-1,097.07	638.93	5.66	-0.74	-5.90
6,830.00	71.53	222.36	6,338.11	-656.92	-1,116.61	659.68	6.33	-0.70	-6.63
6,860.00	71.18	222.17	6,347.70	-677.96	-1,135.73	680.76	1.31	-1.17	-0.63
6,890.00	68.79	217.68	6,357.98	-699.56	-1,153.82	702.41	16.16	-7.97	-14.97
6,920.00	68.05	215.61	6,369.01	-721.95	-1,170.47	724.83	6.87	-2.47	-6.90
6,950.00	67.18	211.24	6,380.44	-745.09	-1,185.75	748.01	13.78	-2.90	-14.57
6,981.00	67.24	208.51	6,392.45	-769.87	-1,199.98	772.82	8.12	0.19	-8.81
7,011.00	68.10	205.93	6,403.85	-794.54	-1,212.67	797.53	8.46	2.87	-8.60
7,042.00	69.00	202.92	6,415.19	-820.81	-1,224.60	823.83	9.49	2.90	-9.71
7,072.00	68.97	200.95	6,425.95	-846.78	-1,235.06	849.83	6.13	-0.10	-6.57
7,102.00	69.08	198.70	6,436.69	-873.13	-1,244.56	876.20	7.01	0.37	-7.50
7,132.00	70.10	197.62	6,447.15	-899.85	-1,253.32	902.94	4.79	3.40	-3.60
7,163.00	71.43	195.91	6,457.36	-927.87	-1,261.76	930.98	6.75	4.29	-5.52
7,193.00	72.68	193.58	6,466.61	-955.47	-1,269.02	958.60	8.48	4.17	-7.77
7,223.00	73.31	192.99	6,475.38	-983.39	-1,275.61	986.53	2.82	2.10	-1.97
7,253.00	74.49	191.51	6,483.70	-1,011.56	-1,281.73	1,014.72	6.16	3.93	-4.93
7,283.00	75.10	191.07	6,491.57	-1,039.95	-1,287.40	1,043.12	2.48	2.03	-1.47
7,313.00	76.20	189.51	6,499.00	-1,068.54	-1,292.59	1,071.73	6.23	3.67	-5.20
7,343.00	77.60	186.63	6,505.81	-1,097.47	-1,296.69	1,100.66	10.45	4.67	-9.60
7,374.00	78.27	184.55	6,512.29	-1,127.64	-1,299.64	1,130.84	6.91	2.16	-6.71
7,404.00	78.51	182.44	6,518.32	-1,156.97	-1,301.43	1,160.17	6.94	0.80	-7.03
7,434.00	78.71	180.51	6,524.25	-1,186.37	-1,302.19	1,189.57	6.34	0.67	-6.43
7,465.00	79.27	178.42	6,530.17	-1,216.79	-1,301.90	1,220.00	6.86	1.81	-6.74
7,495.00	81.40	175.81	6,535.21	-1,246.32	-1,300.41	1,249.53	11.13	7.10	-8.70
7,525.00	83.54	174.11	6,539.14	-1,275.95	-1,297.80	1,279.14	9.08	7.13	-5.67
7,555.00	85.80	171.87	6,541.93	-1,305.59	-1,294.15	1,308.78	10.58	7.53	-7.47
7,585.00	87.32	169.30	6,543.73	-1,335.13	-1,289.25	1,338.30	9.94	5.07	-8.57
7,617.00	86.95	165.35	6,545.33	-1,366.31	-1,282.24	1,369.46	12.38	-1.16	-12.34
7,649.00	87.45	164.12	6,546.89	-1,397.14	-1,273.83	1,400.27	4.14	1.56	-3.84
7,680.00	87.55	163.66	6,548.24	-1,426.89	-1,265.23	1,430.01	1.52	0.32	-1.48
7,712.00	87.38	163.88	6,549.66	-1,457.59	-1,256.30	1,460.68	0.87	-0.53	0.69
7,744.00	86.15	163.38	6,551.46	-1,488.24	-1,247.29	1,491.33	4.15	3.84	-1.56
7,776.00	86.32	163.50	6,553.56	-1,518.85	-1,238.19	1,521.90	0.65	0.53	0.38
7,840.00	87.19	164.23	6,557.19	-1,580.23	-1,220.44	1,583.23	1.77	1.36	1.14
7,903.00	87.62	164.07	6,560.04	-1,640.77	-1,203.25	1,643.73	0.73	0.68	-0.25
7,967.00	88.12	164.10	6,562.42	-1,702.27	-1,185.71	1,705.19	0.78	0.78	0.05

RECEIVED  
Office of Oil and Gas  
MAR 17 2017  
WV Department of Environmental Protection



Scientific Drilling International  
Survey Report



<b>Company:</b>	Stone Energy Corporation	<b>Local Co-ordinate Reference:</b>	Well Erlewine 2H - Slot 2H
<b>Project:</b>	Mary Prospect	<b>TVD Reference:</b>	GL 1212' & KB 18' @ 1230.00ft (Saxon 141)
<b>Site:</b>	Erlewine Pad	<b>MD Reference:</b>	GL 1212' & KB 18' @ 1230.00ft (Saxon 141)
<b>Well:</b>	Erlewine 2H	<b>North Reference:</b>	Grid
<b>Wellbore:</b>	OH	<b>Survey Calculation Method:</b>	Minimum Curvature
<b>Design:</b>	2H As Drilled	<b>Database:</b>	Northeast District

Measured Depth (ft)	Inclination (°)	Azimuth (°)	Vertical Depth (ft)	+N/-S (ft)	+E/-W (ft)	Vertical Section (ft)	Dogleg Rate (°/100usft)	Build Rate (°/100usft)	Turn Rate (°/100usft)
8,030.00	88.73	164.63	6,564.15	-1,762.92	-1,168.74	1,765.79	1.28	0.97	0.84
8,093.00	89.23	164.55	6,565.27	-1,823.64	-1,152.00	1,826.48	0.80	0.79	-0.13
8,157.00	89.50	165.45	6,565.98	-1,885.46	-1,135.44	1,888.25	1.47	0.42	1.41
8,220.00	89.16	164.81	6,566.72	-1,946.34	-1,119.27	1,949.10	1.15	-0.54	-1.02
8,284.00	89.26	164.92	6,567.60	-2,008.12	-1,102.56	2,010.83	0.23	0.16	0.17
8,347.00	88.52	164.96	6,568.82	-2,068.94	-1,086.20	2,071.61	1.18	-1.17	0.06
8,411.00	88.96	164.67	6,570.23	-2,130.69	-1,069.44	2,133.32	0.82	0.69	-0.45
8,475.00	88.79	165.79	6,571.48	-2,192.57	-1,053.12	2,195.16	1.77	-0.27	1.75
8,538.00	89.36	167.55	6,572.50	-2,253.86	-1,038.60	2,256.41	2.94	0.90	2.79
8,601.00	88.66	167.24	6,573.59	-2,315.33	-1,024.85	2,317.85	1.22	-1.11	-0.49
8,665.00	88.69	168.59	6,575.07	-2,377.89	-1,011.46	2,380.38	2.11	0.05	2.11
8,728.00	87.62	169.04	6,577.10	-2,439.66	-999.24	2,442.12	1.84	-1.70	0.71
8,792.00	88.25	168.39	6,579.40	-2,502.38	-986.73	2,504.81	1.41	0.98	-1.02
8,855.00	89.06	168.78	6,580.88	-2,564.12	-974.26	2,566.51	1.43	1.29	0.62
8,919.00	90.20	169.64	6,581.30	-2,626.99	-962.28	2,629.35	2.23	1.78	1.34
8,983.00	90.17	167.34	6,581.09	-2,689.69	-949.51	2,692.03	3.59	-0.05	-3.59
9,047.00	89.03	166.61	6,581.54	-2,752.04	-935.09	2,754.34	2.12	-1.78	-1.14
9,111.00	89.26	164.38	6,582.49	-2,813.99	-919.06	2,816.25	3.50	0.36	-3.48
9,174.00	89.19	163.83	6,583.34	-2,874.58	-901.81	2,876.79	0.88	-0.11	-0.87
9,238.00	89.97	164.14	6,583.81	-2,936.09	-884.15	2,938.26	1.31	1.22	0.48
9,302.00	89.70	163.51	6,584.00	-2,997.56	-866.33	2,999.69	1.07	-0.42	-0.98
9,365.00	88.82	164.34	6,584.81	-3,058.09	-848.88	3,060.17	1.92	-1.40	1.32
9,429.00	88.89	163.25	6,586.09	-3,119.53	-831.03	3,121.57	1.71	0.11	-1.70
9,493.00	87.78	163.35	6,587.95	-3,180.81	-812.64	3,182.80	1.74	-1.73	0.16
9,556.00	88.35	164.71	6,590.08	-3,241.34	-795.32	3,243.29	2.34	0.90	2.16
9,620.00	89.20	165.13	6,591.44	-3,303.12	-778.67	3,305.03	1.48	1.33	0.66
9,684.00	89.93	165.58	6,591.93	-3,365.04	-762.49	3,366.91	1.34	1.14	0.70
9,747.00	90.07	165.87	6,591.93	-3,426.09	-746.96	3,427.93	0.51	0.22	0.46
9,811.00	88.99	165.62	6,592.45	-3,488.12	-731.20	3,489.91	1.73	-1.69	-0.39
9,875.00	88.39	164.90	6,593.92	-3,550.00	-714.92	3,551.75	1.46	-0.94	-1.13
9,938.00	89.03	165.59	6,595.34	-3,610.90	-698.88	3,612.62	1.49	1.02	1.10
10,002.00	87.99	165.04	6,597.00	-3,672.79	-682.66	3,674.46	1.84	-1.63	-0.86
10,065.00	88.26	164.29	6,599.06	-3,733.52	-666.01	3,735.15	1.26	0.43	-1.19
10,129.00	88.83	163.41	6,600.69	-3,794.97	-648.21	3,796.56	1.64	0.89	-1.38
10,192.00	87.85	162.76	6,602.51	-3,855.22	-629.89	3,856.76	1.87	-1.56	-1.03
10,254.00	88.86	163.87	6,604.29	-3,914.58	-612.10	3,916.08	2.42	1.63	1.79
10,316.00	89.67	163.86	6,605.09	-3,974.13	-594.87	3,975.59	1.31	1.31	-0.02
10,380.00	88.53	163.01	6,606.09	-4,035.47	-576.63	4,036.88	2.22	-1.78	-1.33
10,444.00	88.86	162.59	6,607.55	-4,096.59	-557.71	4,097.95	0.83	0.52	-0.66
10,507.00	87.92	162.53	6,609.32	-4,156.67	-538.83	4,157.98	1.50	-1.49	-0.10
10,570.00	88.86	162.93	6,611.09	-4,216.80	-520.14	4,218.07	1.62	1.49	0.63
10,634.00	89.13	163.37	6,612.21	-4,278.05	-501.59	4,279.27	0.81	0.42	0.69
10,698.00	88.39	163.62	6,613.60	-4,339.39	-483.41	4,340.57	1.22	-1.16	0.39

RECEIVED  
Office of Oil and Gas  
MAR 13 2017  
WV Department of Environmental Protection



Scientific Drilling International  
Survey Report



<b>Company:</b>	Stone Energy Corporation	<b>Local Co-ordinate Reference:</b>	Well Erlewine 2H - Slot 2H
<b>Project:</b>	Mary Prospect	<b>TVD Reference:</b>	GL 1212' & KB 18' @ 1230.00ft (Saxon 141)
<b>Site:</b>	Erlewine Pad	<b>MD Reference:</b>	GL 1212' & KB 18' @ 1230.00ft (Saxon 141)
<b>Well:</b>	Erlewine 2H	<b>North Reference:</b>	Grid
<b>Wellbore:</b>	OH	<b>Survey Calculation Method:</b>	Minimum Curvature
<b>Design:</b>	2H As Drilled	<b>Database:</b>	Northeast District

Measured Depth (ft)	Inclination (°)	Azimuth (°)	Vertical Depth (ft)	+N/-S (ft)	+E/-W (ft)	Vertical Section (ft)	Dogleg Rate (°/100usft)	Build Rate (°/100usft)	Turn Rate (°/100usft)
10,762.00	88.72	164.03	6,615.21	-4,400.84	-465.59	4,401.98	0.82	0.52	0.64
10,825.00	87.99	164.33	6,617.02	-4,461.43	-448.42	4,462.52	1.25	-1.16	0.48
10,889.00	88.66	165.34	6,618.89	-4,523.17	-431.69	4,524.22	1.89	1.05	1.58
10,953.00	89.67	165.73	6,619.82	-4,585.14	-415.70	4,586.15	1.69	1.58	0.61
11,016.00	89.87	165.26	6,620.08	-4,646.13	-399.92	4,647.10	0.81	0.32	-0.75
11,080.00	88.62	164.37	6,620.92	-4,707.89	-383.16	4,708.82	2.40	-1.95	-1.39
11,144.00	88.19	163.98	6,622.70	-4,769.44	-365.71	4,770.32	0.91	-0.67	-0.61
11,208.00	88.32	163.15	6,624.65	-4,830.79	-347.61	4,831.64	1.31	0.20	-1.30
11,271.00	88.19	162.72	6,626.57	-4,890.99	-329.14	4,891.79	0.71	-0.21	-0.68
11,333.00	86.94	163.17	6,629.20	-4,950.21	-310.97	4,950.96	2.14	-2.02	0.73
11,397.00	87.15	163.45	6,632.50	-5,011.43	-292.61	5,012.14	0.55	0.33	0.44
11,460.00	87.68	163.34	6,635.34	-5,071.74	-274.63	5,072.41	0.86	0.84	-0.17
11,524.00	88.12	163.14	6,637.69	-5,132.98	-256.18	5,133.60	0.76	0.69	-0.31
11,587.00	88.29	165.03	6,639.66	-5,193.54	-238.92	5,194.11	3.01	0.27	3.00
11,651.00	86.94	164.15	6,642.33	-5,255.18	-221.93	5,255.71	2.52	-2.11	-1.38
11,715.00	89.30	166.87	6,644.43	-5,317.10	-205.93	5,317.59	5.62	3.69	4.25
11,778.00	88.76	164.92	6,645.49	-5,378.19	-190.58	5,378.64	3.21	-0.86	-3.10
11,840.00	88.26	162.78	6,647.10	-5,437.72	-173.34	5,438.13	3.54	-0.81	-3.45
11,903.00	89.29	162.22	6,648.45	-5,497.79	-154.40	5,498.15	1.86	1.63	-0.89
11,966.00	89.97	162.01	6,648.86	-5,557.74	-135.05	5,558.06	1.13	1.08	-0.33
12,030.00	90.50	162.42	6,648.60	-5,618.68	-115.50	5,618.95	1.05	0.83	0.64
12,094.00	90.30	164.58	6,648.15	-5,680.04	-97.33	5,680.26	3.39	-0.31	3.38
12,157.00	89.40	164.65	6,648.31	-5,740.78	-80.61	5,740.96	1.43	-1.43	0.11
12,220.00	90.03	164.17	6,648.63	-5,801.46	-63.68	5,801.60	1.26	1.00	-0.76
12,284.00	88.09	164.84	6,649.68	-5,863.13	-46.59	5,863.22	3.21	-3.03	1.05
12,347.00	88.76	165.31	6,651.41	-5,923.98	-30.37	5,924.03	1.30	1.06	0.75
12,411.00	89.50	165.82	6,652.38	-5,985.95	-14.42	5,985.97	1.40	1.16	0.80
12,443.00	88.02	165.98	6,653.07	-6,016.98	-6.62	6,016.98	4.65	-4.63	0.50
<b>Last SDI MWD @ 12443 MD</b>									
12,510.00	88.02	165.98	6,655.39	-6,081.94	9.60	6,081.90	0.00	0.00	0.00
<b>Projection to Bit @ 12510 MD</b>									

Measured Depth (ft)	Vertical Depth (ft)	Local Coordinates		Comment
		+N/-S (ft)	+E/-W (ft)	
108.00	108.00	0.31	0.30	First VES Gyro @ 108 MD
1,213.00	1,212.98	4.81	3.31	Last VES Gyro @ 1213 MD
1,225.00	1,224.98	4.85	3.34	First SDI Gyro @ 1225 MD
2,388.00	2,386.86	10.75	-39.51	Last SDI Gyro @ 2388 MD
2,525.00	2,523.50	15.33	-48.33	First SDI MWD @ 2525 MD
12,443.00	6,653.07	-6,016.98	-6.62	Last SDI MWD @ 12443 MD
12,510.00	6,655.39	-6,081.94	9.60	Projection to Bit @ 12510 MD