



EQT Production - Marcellus

Wetzel County, WV

Wetzel County 515288

Well #515288

API #47-10303014

Main Wellbore

Design: 525288 As Drilled Surveys

Standard Survey Report

28 July, 2015



Phoenix Technology Services

Survey Report



www.eqt.com

Database:	COMPASS 5000.1 Build 73	Local Co-ordinate Reference:	US State Plane 1927
Company:	Phoenix Technology Services	TVD Reference:	Mean Sea Level
Project:	PHX MWD	MD Reference:	Mean Sea Level
Site:	PHX MWD	North Reference:	Mean Sea Level
Well:	PHX MWD	Survey Calculation Method:	Minimum Curvature
Wellbore:	PHX MWD		
Design:	PHX MWD		

Project:	PHX MWD		
Map System:	US State Plane 1927 (Exact solution)	System Datum:	Mean Sea Level
Geo Datum:	NAD 1927 (NADCON CONUS)		
Map Zone:	West Virginia North 4701		Using geodetic scale factor

Site:	PHX MWD				
Site Position:		Northing:	386,692.75 usft	Latitude:	39.56
From:	Map	Easting:	1,695,466.43 usft	Longitude:	-80.58
Position Uncertainty:	0.0 usft	Slot Radius:	13-3/16 "	Grid Convergence:	-0.69 °

Well:	PHX MWD					
Well Position	+N-S	0.0 usft	Northing:	386,692.75 usft	Latitude:	39° 33' 24.017 N
	+E-W	0.0 usft	Easting:	1,695,466.43 usft	Longitude:	80° 34' 48.346 W
Position Uncertainty		0.0 usft	Wellhead Elevation:	usft	Ground Level:	1,443.0 usft

Wellbore:	PHX MWD				
Magnetics	Model Name	Sample Date	Declination (°)	Dip Angle (°)	Field Strength (nT)
	HDGM	6/22/2015	-8.35	67.07	52,524

Design:	PHX MWD				
Audit Notes:					
Version:	1.0	Phase:	ACTUAL	Tie On Depth:	0.0
Vertical Section:	Depth From (TVD) (usft)	+N-S (usft)	+E-W (usft)	Direction (°)	
	0.0	0.0	0.0	182.95	

Survey Program	Date	7/28/2015			
From (')	To (usft)	Survey (Wellbore)	Tool Name	Description	
0.00	5,054.0	515288 Gyrodats (Main Wellbore)	GYD_DP_MS	Gyrodats gyro-compassing and drop	
0.00	13,996.0	515288 PHX MWD (Main Wellbore)	PHX+MWD+HDGM	PHX+OWSG MWD + HDGM	

Survey:	PHX MWD									
Measured Depth (usft)	Inclination (°)	Azimuth (°)	Vertical Depth (usft)	Subsea Depth (usft)	+N-S (usft)	+E-W (usft)	Vertical Section (usft)	Dogleg Rate (°/100usft)	Build Rate (°/100usft)	Turn Rate (°/100usft)
0.0	0.00	0.00	0.0	-1,459.0	0.0	0.0	0.0	0.00	0.00	0.00
103.0	0.05	210.49	103.0	-1,356.0	0.0	0.0	0.0	0.05	0.05	0.00
203.0	0.09	203.56	203.0	-1,256.0	-0.1	-0.1	0.2	0.04	0.04	-5.93
303.0	0.23	205.67	303.0	-1,156.0	-0.4	-0.2	0.4	0.14	0.14	2.11
403.0	0.19	197.69	403.0	-1,056.0	-0.7	-0.3	0.8	0.05	-0.04	-7.95
503.0	0.11	243.59	503.0	-956.0	-0.9	-0.5	1.0	0.14	-0.08	45.90
603.0	0.14	248.25	603.0	-856.0	-1.0	-0.7	1.1	0.03	0.03	4.66
703.0	0.08	236.03	703.0	-756.0	-1.1	-0.8	1.2	0.06	-0.06	-12.22

PHX MWD
 JUL 28 2015
 WV Department of Environmental Protection



Phoenix Technology Services
Survey Report



Database:	COMPASS 5000.1 Build 73	Local Co-ordinate Reference:	WV State Plane NAD 83
Company:	WV Department of Environmental Protection	TVD Reference:	Height of Mean Sea
Project:	WV State Plane NAD 83	MD Reference:	Height of Mean Sea
Site:	WV State Plane NAD 83	North Reference:	WGS 84
Well:	WV State Plane NAD 83	Survey Calculation Method:	WV State Plane NAD 83
Wellbore:	WV State Plane NAD 83		
Design:	WV State Plane NAD 83		

Measured Depth (usft)	Inclination (")	Azimuth (")	Vertical Depth (usft)	Subsea Depth (usft)	+N-S (usft)	+E-W (usft)	Vertical Section (usft)	Dogleg Rate ("/100usft)	Build Rate ("/100usft)	Turn Rate ("/100usft)
803.0	0.05	316.28	803.0	-856.0	-1.1	-0.9	1.2	0.09	-0.03	80.25
903.0	0.08	311.51	903.0	-556.0	-1.0	-1.0	1.1	0.03	0.03	-4.77
1,003.0	0.15	248.62	1,003.0	-456.0	-1.0	-1.2	1.1	0.13	0.07	-62.89
1,103.0	0.12	219.47	1,103.0	-356.0	-1.2	-1.4	1.2	0.07	-0.03	-29.15
1,203.0	0.09	181.88	1,203.0	-256.0	-1.3	-1.4	1.4	0.07	-0.03	-37.59
1,303.0	0.03	179.48	1,303.0	-156.0	-1.4	-1.4	1.5	0.06	-0.06	-2.40
1,403.0	0.04	214.25	1,403.0	-56.0	-1.5	-1.5	1.6	0.02	0.01	34.77
1,503.0	0.05	219.11	1,503.0	44.0	-1.6	-1.5	1.6	0.01	0.01	4.86
1,603.0	0.09	258.57	1,603.0	144.0	-1.6	-1.6	1.7	0.06	0.04	39.46
1,703.0	0.17	324.82	1,703.0	244.0	-1.5	-1.8	1.6	0.16	0.08	86.25
1,803.0	0.21	336.72	1,803.0	344.0	-1.2	-1.9	1.3	0.06	0.04	11.90
1,903.0	0.29	13.70	1,903.0	444.0	-0.8	-1.9	0.9	0.18	0.08	36.98
2,003.0	0.54	21.50	2,003.0	544.0	-0.1	-1.7	0.2	0.26	0.25	7.80
2,103.0	0.62	19.09	2,103.0	644.0	0.8	-1.4	-0.8	0.08	0.08	-2.41
2,203.0	0.72	13.34	2,203.0	744.0	2.0	-1.0	-1.9	0.12	0.10	-5.75
2,303.0	0.71	13.45	2,303.0	844.0	3.2	-0.8	-3.1	0.01	-0.01	0.11
2,403.0	0.67	15.10	2,403.0	944.0	4.3	-0.5	-4.3	0.04	-0.04	1.65
2,503.0	0.65	15.49	2,503.0	1,044.0	5.5	-0.2	-5.4	0.02	-0.02	0.39
2,603.0	0.68	9.43	2,603.0	1,144.0	6.6	0.1	-6.6	0.08	0.03	-6.06
2,703.0	0.53	6.27	2,702.9	1,243.9	7.6	0.2	-7.6	0.15	-0.15	-3.16
2,803.0	0.74	11.77	2,802.9	1,343.9	8.7	0.4	-8.7	0.22	0.21	5.50
2,903.0	0.60	357.39	2,902.9	1,443.9	9.9	0.5	-9.9	0.22	-0.14	-14.38
3,003.0	0.73	338.24	3,002.9	1,543.9	11.0	0.3	-11.0	0.26	0.13	-19.15
3,103.0	0.78	341.62	3,102.9	1,643.9	12.2	-0.2	-12.2	0.07	0.05	3.38
3,203.0	0.68	332.13	3,202.9	1,743.9	13.4	-0.7	-13.3	0.16	-0.10	-9.49
3,303.0	0.83	320.74	3,302.9	1,843.9	14.5	-1.4	-14.4	0.21	0.15	-11.39
3,403.0	0.74	325.27	3,402.9	1,943.9	15.6	-2.2	-15.4	0.11	-0.09	4.53
3,503.0	0.66	328.15	3,502.9	2,043.9	16.6	-2.9	-16.4	0.09	-0.08	2.88
3,603.0	0.70	336.38	3,602.9	2,143.9	17.6	-3.5	-17.4	0.11	0.04	8.23
3,703.0	0.72	329.59	3,702.9	2,243.9	18.7	-4.0	-18.5	0.09	0.02	-6.79
3,803.0	0.78	337.03	3,802.9	2,343.9	19.9	-4.6	-19.7	0.11	0.06	7.44
3,903.0	0.55	334.70	3,902.9	2,443.9	21.0	-5.1	-20.7	0.23	-0.23	-2.33
4,003.0	0.67	336.49	4,002.8	2,543.8	21.9	-5.5	-21.6	0.12	0.12	1.79
4,103.0	0.66	329.96	4,102.8	2,643.8	23.0	-6.0	-22.6	0.08	-0.01	-6.53
4,203.0	0.70	329.94	4,202.8	2,743.8	24.0	-6.6	-23.6	0.04	0.04	0.00
4,303.0	0.73	326.59	4,302.8	2,843.8	25.1	-7.3	-24.7	0.05	0.03	-3.35
4,403.0	0.72	328.06	4,402.8	2,943.8	26.1	-8.0	-25.7	0.02	-0.01	0.44
4,503.0	0.81	327.54	4,502.8	3,043.8	27.3	-8.7	-26.8	0.06	-0.09	-0.54
4,603.0	0.81	328.82	4,602.8	3,143.8	28.5	-9.4	-27.9	0.02	0.00	3.38
4,703.0	0.77	333.87	4,702.8	3,243.8	29.7	-10.1	-29.1	0.08	-0.04	5.05
4,803.0	0.68	337.26	4,802.8	3,343.8	30.8	-10.6	-30.2	0.10	-0.09	3.38
4,903.0	0.61	342.70	4,802.8	3,443.8	31.9	-11.0	-31.3	0.09	-0.07	5.11

FILED
Office of Oil and Gas
JUL 28 2016
WV Department of Environmental Protection



Phoenix Technology Services

Survey Report



Database:	50001 - 50001 - 50001	Local Co-ordinate Reference:	50001 - 50001 - 50001
Company:	Phoenix Technology Services	TVD Reference:	50001 - 50001 - 50001
Project:	50001 - 50001 - 50001	MD Reference:	50001 - 50001 - 50001
Site:	50001 - 50001 - 50001	North Reference:	50001 - 50001 - 50001
Well:	50001 - 50001 - 50001	Survey Calculation Method:	50001 - 50001 - 50001
Wellbore:	50001 - 50001 - 50001		
Design:	50001 - 50001 - 50001		

Measured Depth (usft)	Inclination (°)	Azimuth (°)	Vertical Depth (usft)	Subsea Depth (usft)	+N-S (usft)	+E-W (usft)	Vertical Section (usft)	Dogleg Rate (°/100usft)	Build Rate (°/100usft)	Turn Rate (°/100usft)
5,003.0	0.48	341.09	5,002.8	3,543.8	32.8	-11.3	-32.2	0.13	-0.13	-1.61
5,064.0	0.39	334.17	5,063.8	3,604.8	33.2	-11.5	-32.6	0.17	-0.15	-11.34
5,064.1	0.39	334.17	5,063.9	3,604.9	33.2	-11.5	-32.6	0.00	0.00	0.00
5,072.0	0.80	288.00	5,071.8	3,612.8	33.3	-11.5	-32.6	7.59	5.19	-584.43
5,104.0	4.10	272.40	5,103.7	3,644.7	33.4	-12.9	-32.7	10.43	10.31	-48.75
5,135.0	7.70	275.70	5,134.6	3,675.6	33.6	-16.1	-32.8	11.66	11.61	10.65
5,167.0	10.50	280.40	5,166.2	3,707.2	34.4	-21.1	-33.2	9.05	8.75	14.69
5,199.0	12.40	281.70	5,197.5	3,738.5	35.6	-27.3	-34.1	5.99	5.94	4.06
5,230.0	14.30	282.70	5,227.7	3,768.7	37.1	-34.3	-35.3	6.17	6.13	3.23
5,262.0	16.40	283.50	5,258.5	3,799.5	39.0	-42.5	-36.8	6.60	6.56	2.50
5,293.0	18.20	283.50	5,288.1	3,829.1	41.2	-51.5	-38.5	5.81	5.81	0.00
5,324.0	19.60	283.10	5,317.5	3,858.5	43.5	-61.3	-40.3	4.54	4.52	-1.29
5,356.0	21.50	282.80	5,347.4	3,888.4	46.0	-72.2	-42.2	5.95	5.94	-0.94
5,387.0	23.60	282.90	5,376.1	3,917.1	48.6	-83.8	-44.3	6.78	6.77	0.32
5,419.0	26.80	283.30	5,405.0	3,946.0	51.7	-97.1	-46.7	10.01	10.00	1.25
5,451.0	29.20	283.60	5,433.3	3,974.3	55.2	-111.7	-49.4	7.51	7.50	0.94
5,482.0	31.90	283.40	5,460.0	4,001.0	58.9	-127.0	-52.3	8.72	8.71	-0.65
5,514.0	34.20	282.80	5,486.8	4,027.8	62.9	-144.0	-55.3	7.26	7.19	-1.88
5,545.0	37.00	283.60	5,512.0	4,053.0	67.0	-161.6	-58.6	9.16	9.03	2.58
5,577.0	39.70	285.00	5,537.1	4,078.1	71.9	-180.8	-62.5	8.86	8.44	4.38
5,640.0	39.30	284.50	5,585.7	4,126.7	82.1	-219.6	-70.7	0.81	-0.83	-0.79
5,703.0	39.30	282.80	5,634.4	4,175.4	91.5	-258.3	-78.1	1.71	0.00	-2.70
5,766.0	40.90	283.20	5,682.6	4,223.6	100.6	-297.9	-85.1	2.57	2.54	0.63
5,829.0	41.10	283.60	5,730.2	4,271.2	110.2	-338.1	-92.6	0.52	0.32	0.63
5,892.0	39.70	282.90	5,778.1	4,319.1	119.6	-377.8	-99.9	2.34	-2.22	-1.11
5,955.0	40.00	283.10	5,826.5	4,367.5	128.7	-417.2	-107.0	0.52	0.48	0.32
6,018.0	39.40	282.80	5,875.0	4,416.0	137.7	-456.4	-114.0	1.00	-0.95	-0.48
6,081.0	38.10	282.20	5,924.1	4,465.1	146.2	-494.9	-120.5	2.15	-2.06	-0.95
6,144.0	38.20	282.30	5,973.7	4,514.7	154.5	-532.9	-126.8	0.19	0.16	0.16
6,207.0	39.60	283.30	6,022.7	4,563.7	163.3	-571.5	-133.5	2.44	2.22	1.59
6,270.0	38.80	282.80	6,071.5	4,612.5	172.2	-610.3	-140.5	1.37	-1.27	-0.79
6,333.0	38.60	282.80	6,120.7	4,661.7	180.9	-648.7	-147.2	0.37	-0.32	-0.32
6,397.0	39.80	283.40	6,170.3	4,711.3	190.0	-688.1	-154.2	2.03	1.88	1.25
6,460.0	40.40	283.90	6,218.5	4,759.5	199.6	-727.5	-161.8	1.08	0.95	0.79
6,523.0	40.00	283.90	6,266.6	4,807.6	209.4	-767.0	-169.5	0.63	-0.63	0.00
6,586.0	39.40	282.60	6,315.1	4,856.1	218.6	-806.2	-176.7	1.63	-0.95	-2.06
6,649.0	40.20	282.70	6,363.5	4,904.5	227.4	-845.5	-183.5	1.27	1.27	0.16
6,712.0	39.30	282.60	6,411.9	4,952.9	236.2	-884.8	-190.3	1.43	-1.43	-0.16
6,775.0	39.40	282.50	6,460.6	5,001.6	244.9	-923.8	-196.9	0.19	0.16	-0.16
6,838.0	40.90	283.60	6,508.8	5,049.8	254.1	-963.4	-204.0	2.63	2.38	1.75
6,901.0	40.20	283.80	6,556.6	5,097.6	263.8	-1,003.2	-211.7	1.13	-1.11	0.32
6,964.0	38.80	283.30	6,605.2	5,146.2	273.2	-1,042.1	-219.0	2.28	-2.22	-0.79



Phoenix Technology Services
Survey Report



Database:	COMPASS 5000.1 Build 73	Local Co-ordinate Reference:	North Reference:
Company:	Phoenix Technology Services	TVD Reference:	Survey Calculation Method:
Project:	COMPASS 5000.1 Build 73	MD Reference:	
Site:	COMPASS 5000.1 Build 73	North Reference:	
Well:	COMPASS 5000.1 Build 73	Survey Calculation Method:	
Wellbore:	COMPASS 5000.1 Build 73		
Design:	COMPASS 5000.1 Build 73		

Measured Depth (usft)	Inclination (°)	Azimuth (°)	Vertical Depth (usft)	Subsea Depth (usft)	+N/-S (usft)	+E/-W (usft)	Vertical Section (usft)	Dogleg Rate (°/100usft)	Build Rate (°/100usft)	Turn Rate (°/100usft)
7,028.0	39.40	282.30	6,654.9	5,195.9	282.1	-1,081.5	-225.9	1.36	0.94	-1.56
7,090.0	39.10	281.40	6,702.9	5,243.9	280.2	-1,119.9	-232.0	1.04	-0.48	-1.45
7,153.0	39.20	281.90	6,751.8	5,292.8	298.2	-1,158.8	-238.0	0.53	0.16	0.79
7,217.0	38.90	281.70	6,801.5	5,342.5	306.5	-1,198.3	-244.2	0.51	-0.47	-0.31
7,280.0	39.40	281.90	6,850.3	5,391.3	314.6	-1,237.2	-250.3	0.82	0.79	0.32
7,343.0	39.60	282.70	6,899.0	5,440.0	323.1	-1,276.4	-256.8	0.87	0.32	1.27
7,406.0	39.70	283.70	6,947.5	5,488.5	332.3	-1,315.5	-264.0	1.03	0.16	1.59
7,437.0	39.40	284.00	6,971.4	5,512.4	337.0	-1,334.7	-267.7	1.15	-0.97	0.97
7,469.0	38.50	281.90	6,996.3	5,537.3	341.5	-1,354.3	-271.2	4.99	-2.81	-6.56
7,500.0	37.10	275.80	7,020.8	5,561.8	344.5	-1,373.0	-273.2	12.87	-4.52	-19.68
7,531.0	36.50	270.10	7,045.6	5,586.6	345.4	-1,391.6	-273.2	11.18	-1.94	-18.39
7,563.0	35.90	264.40	7,071.4	5,612.4	344.5	-1,410.4	-271.3	10.68	-1.88	-17.81
7,594.0	36.00	259.20	7,096.5	5,637.5	341.9	-1,428.4	-267.8	9.85	0.32	-16.77
7,626.0	35.80	253.90	7,122.4	5,663.4	337.6	-1,446.7	-262.5	9.73	-0.83	-16.56
7,657.0	35.10	249.20	7,147.7	5,688.7	331.9	-1,463.7	-255.9	9.08	-2.26	-15.16
7,689.0	34.50	244.80	7,174.0	5,715.0	324.8	-1,480.5	-247.9	8.07	-1.88	-13.75
7,720.0	34.50	240.40	7,199.5	5,740.5	316.7	-1,496.1	-239.1	8.04	0.00	-14.19
7,752.0	35.10	234.50	7,225.8	5,766.8	306.9	-1,511.5	-228.5	10.68	1.88	-18.44
7,784.0	36.00	232.80	7,251.9	5,792.9	295.9	-1,526.5	-216.7	4.18	2.81	-5.31
7,815.0	37.00	229.90	7,276.8	5,817.8	284.3	-1,540.8	-204.4	6.43	3.23	-9.35
7,847.0	38.00	225.30	7,302.2	5,843.2	271.2	-1,555.2	-190.6	9.29	3.13	-14.38
7,878.0	39.90	220.40	7,326.3	5,867.3	256.9	-1,568.4	-175.6	11.67	6.13	-15.81
7,910.0	42.20	215.80	7,350.4	5,891.4	240.4	-1,581.4	-158.5	11.86	7.19	-14.38
7,941.0	44.90	212.90	7,372.9	5,913.9	222.7	-1,593.4	-140.2	10.83	8.71	-9.35
7,973.0	47.80	210.00	7,395.0	5,936.0	203.0	-1,605.5	-119.9	11.18	9.06	-9.06
8,004.0	50.60	206.90	7,415.2	5,956.2	182.4	-1,616.7	-98.7	11.78	9.03	-10.00
8,036.0	53.10	203.50	7,435.0	5,976.0	159.6	-1,627.4	-75.4	11.44	7.81	-10.63
8,068.0	54.90	199.40	7,453.8	5,994.8	135.5	-1,636.8	-50.9	11.79	5.63	-12.81
8,099.0	56.80	195.30	7,471.2	6,012.2	111.0	-1,644.4	-26.0	12.54	6.13	-13.23
8,131.0	59.10	191.40	7,488.2	6,029.2	84.6	-1,650.7	0.7	12.58	7.19	-12.19
8,162.0	62.10	188.50	7,503.4	6,044.4	58.0	-1,655.4	27.5	12.65	9.68	-9.35
8,194.0	66.10	187.20	7,517.4	6,058.4	29.5	-1,659.3	56.1	13.02	12.50	-4.06
8,226.0	68.60	185.90	7,529.7	6,070.7	0.2	-1,662.6	85.6	8.67	7.81	-4.06
8,257.0	70.10	183.10	7,540.7	6,081.7	-28.7	-1,664.9	114.6	9.74	4.84	
8,289.0	72.30	180.90	7,551.0	6,092.0	-59.0	-1,666.0	144.9	9.47	4.84	
8,320.0	75.40	178.40	7,559.6	6,100.6	-88.8	-1,665.8	174.6	12.65	10.00	
8,352.0	77.70	176.50	7,567.0	6,108.0	-118.9	-1,664.4	205.6	8.58	6.13	
8,383.0	79.80	174.60	7,573.1	6,114.1	-150.2	-1,662.0	235.7	8.58	6.13	
8,415.0	81.00	171.90	7,578.5	6,119.5	-181.5	-1,658.3	266.8	9.40	4.38	
8,447.0	83.40	169.90	7,582.9	6,123.9	-212.8	-1,653.3	297.8	9.73	7.50	
8,478.0	85.50	168.10	7,585.9	6,126.9	-243.1	-1,647.4	327.7	8.90	4.38	
8,510.0	86.60	167.10	7,588.1	6,129.1	-274.2	-1,640.6	358.5	4.64	4.38	

RECEIVED
Office of Oil and Gas
JUL 28 2016
New York Department of Environmental Protection



Phoenix Technology Services
Survey Report



Database:	North America - Eagle Pass - 11	Local Co-ordinate Reference:	North America - Eagle Pass - 11
Company:	OTI Energy Services	TVD Reference:	North America - Eagle Pass - 11
Project:	North America - Eagle Pass - 11	MD Reference:	North America - Eagle Pass - 11
Site:	North America - Eagle Pass - 11	North Reference:	North America - Eagle Pass - 11
Well:	North America - Eagle Pass - 11	Survey Calculation Method:	Minimum Curvature
Wellbore:	North America - Eagle Pass - 11		
Design:	North America - Eagle Pass - 11		

Survey											
Measured Depth (usft)	Inclination (°)	Azimuth (°)	Vertical Depth (usft)	Subsea Depth (usft)	+N/-S (usft)	+E/-W (usft)	Vertical Section (usft)	Dogleg Rate (°/100usft)	Build Rate (°/100usft)	Turn Rate (°/100usft)	
8,521.6	87.53	166.69	7,588.7	6,129.7	-285.5	-1,637.9	369.6	8.81	8.06	-3.55	
8,541.0	89.10	166.00	7,589.2	6,130.2	-304.4	-1,633.4	388.2	8.81	8.07	-3.55	
8,573.0	89.40	165.80	7,589.7	6,130.7	-335.4	-1,625.6	418.8	1.13	0.94	-0.63	
8,602.0	90.80	165.10	7,589.6	6,130.6	-363.5	-1,618.3	446.5	5.40	4.83	-2.41	
8,665.0	92.10	164.90	7,588.0	6,129.0	-424.3	-1,602.0	506.4	2.09	2.06	-0.32	
8,728.0	92.30	165.00	7,585.6	6,126.6	-485.1	-1,585.6	566.3	0.35	0.32	0.16	
8,791.0	90.50	164.60	7,584.1	6,125.1	-545.9	-1,569.1	626.1	2.93	-2.86	-0.63	
8,854.0	87.00	163.80	7,585.4	6,126.4	-606.4	-1,551.9	685.7	5.78	-5.56	-1.59	
8,918.0	88.20	163.30	7,588.1	6,129.1	-667.7	-1,533.7	746.0	1.93	1.88	-0.47	
8,981.0	89.60	164.90	7,589.3	6,130.3	-728.3	-1,516.4	805.6	3.37	2.22	2.54	
9,044.0	90.50	166.20	7,589.3	6,130.3	-789.3	-1,500.7	865.7	2.51	1.43	2.06	
9,107.0	89.80	166.30	7,589.1	6,130.1	-850.5	-1,485.7	926.0	1.12	-1.11	0.16	
9,170.0	88.40	165.80	7,590.1	6,131.1	-911.6	-1,470.5	986.3	2.36	-2.22	-0.79	
9,233.0	88.10	166.10	7,592.0	6,133.0	-972.7	-1,455.2	1,046.5	0.67	-0.48	0.48	
9,297.0	87.80	167.10	7,594.3	6,135.3	-1,034.9	-1,440.4	1,107.9	1.63	-0.47	1.56	
9,360.0	88.40	164.30	7,596.4	6,137.4	-1,095.9	-1,424.9	1,168.0	4.54	0.95	-4.44	
9,423.0	89.10	162.80	7,597.8	6,138.8	-1,156.3	-1,407.0	1,227.4	2.63	1.11	-2.38	
9,486.0	90.60	166.00	7,597.9	6,138.9	-1,217.0	-1,390.1	1,287.1	5.61	2.38	5.08	
9,496.6	90.73	166.25	7,597.8	6,138.8	-1,227.3	-1,367.6	1,297.3	2.70	1.27	2.38	
9,549.0	91.40	167.50	7,596.8	6,137.8	-1,278.3	-1,375.7	1,347.6	2.70	1.27	2.38	
9,612.0	91.80	168.10	7,595.1	6,136.1	-1,339.9	-1,362.3	1,408.4	1.14	0.63	0.95	
9,675.0	89.80	167.20	7,594.2	6,135.2	-1,401.4	-1,348.9	1,469.2	3.48	-3.17	-1.43	
9,739.0	88.50	165.00	7,595.1	6,136.1	-1,463.5	-1,333.5	1,530.4	3.99	-2.03	-3.44	
9,802.0	87.80	163.60	7,597.2	6,138.2	-1,524.1	-1,316.5	1,590.0	2.48	-1.11	-2.22	
9,865.0	87.70	164.00	7,599.6	6,140.6	-1,584.6	-1,298.9	1,649.5	0.65	-0.16	0.63	
9,928.0	88.50	164.10	7,601.7	6,142.7	-1,645.1	-1,281.6	1,709.1	1.28	1.27	0.16	
9,991.0	89.60	164.60	7,602.8	6,143.8	-1,705.8	-1,264.6	1,768.8	1.92	1.75	0.79	
10,054.0	89.60	164.50	7,603.2	6,144.2	-1,766.5	-1,247.8	1,828.6	0.16	0.00	-0.16	
10,117.0	88.60	163.70	7,604.2	6,145.2	-1,827.1	-1,230.6	1,888.2	2.03	-1.59	-1.27	
10,180.0	88.70	167.20	7,605.7	6,146.7	-1,888.0	-1,214.7	1,948.2	5.56	0.16	5.56	
10,243.0	88.50	167.40	7,607.2	6,148.2	-1,949.5	-1,200.9	2,008.9	0.45	-0.32	0.32	
10,306.0	88.20	167.10	7,609.0	6,150.0	-2,010.9	-1,187.0	2,069.5	0.67	-0.48	-0.48	
10,370.0	88.60	166.70	7,610.8	6,151.8	-2,073.2	-1,172.5	2,131.0	0.88	0.63	-0.63	
10,433.0	88.80	168.00	7,612.3	6,153.3	-2,134.4	-1,157.6	2,191.3	1.16	0.32	-1.11	
10,496.0	88.70	165.80	7,613.6	6,154.6	-2,195.5	-1,142.3	2,251.5	0.35	-0.16	-0.32	
10,559.0	89.90	165.20	7,614.4	6,155.4	-2,256.5	-1,126.5	2,311.6	2.13	1.90	-0.95	
10,622.0	90.20	164.50	7,614.4	6,155.4	-2,317.3	-1,110.1	2,371.5	1.21	0.48	-1.11	
10,685.0	89.10	163.60	7,614.7	6,155.7	-2,377.9	-1,092.7	2,431.1	2.26	-1.75	-1.43	
10,748.0	89.50	163.50	7,615.5	6,156.5	-2,438.3	-1,074.9	2,490.5	0.65	0.63	-0.16	
10,811.0	90.60	163.20	7,615.5	6,156.5	-2,498.7	-1,056.9	2,549.9	1.81	1.75	-0.48	
10,874.0	92.70	166.50	7,613.6	6,154.6	-2,559.4	-1,040.4	2,609.7	6.21	3.33	5.24	

Database:	1046 5000.1 Build 73	Local Co-ordinate Reference:	1046 5000.1 Build 73
Company:	EQT Energy Technology Solutions	TVD Reference:	1046 5000.1 Build 73
Project:	1046 5000.1 Build 73	MD Reference:	1046 5000.1 Build 73
Site:	1046 5000.1 Build 73	North Reference:	1046 5000.1 Build 73
Well:	1046 5000.1 Build 73	Survey Calculation Method:	1046 5000.1 Build 73
Wellbore:	1046 5000.1 Build 73		
Design:	1046 5000.1 Build 73		

Measured Depth (usft)	Inclination (°)	Azimuth (°)	Vertical Depth (usft)	Subsea Depth (usft)	+N-S (usft)	+E-W (usft)	Vertical Section (usft)	Dogleg Rate (°/100usft)	Build Rate (°/100usft)	Turn Rate (°/100usft)
11,937.0	92.50	168.00	7,610.8	6,151.8	-2,620.8	-1,026.5	2,670.3	2.40	-0.32	2.38
11,000.0	90.60	167.20	7,609.1	6,150.1	-2,682.3	-1,013.0	2,731.0	3.27	-3.02	-1.27
11,063.0	90.50	167.70	7,608.5	6,149.5	-2,743.8	-999.3	2,791.7	0.81	-0.16	0.79
11,126.0	88.70	169.50	7,608.9	6,149.9	-2,805.6	-986.8	2,852.7	4.04	-2.86	2.86
11,189.0	88.40	170.40	7,610.5	6,151.5	-2,867.6	-975.9	2,914.1	1.51	-0.48	1.43
11,252.0	87.30	168.10	7,612.9	6,153.9	-2,929.4	-964.1	2,975.3	4.04	-1.75	-3.65
11,316.0	87.50	165.70	7,615.8	6,156.8	-2,991.7	-949.6	3,036.7	3.76	0.31	-3.75
11,379.0	87.70	166.00	7,618.4	6,159.4	-3,052.7	-934.2	3,096.9	0.57	0.32	0.48
11,442.0	88.40	165.90	7,620.6	6,161.6	-3,113.8	-919.0	3,157.1	1.12	1.11	-0.16
11,505.0	87.70	163.70	7,622.7	6,163.7	-3,174.6	-902.4	3,216.9	3.66	-1.11	-3.49
11,568.0	89.90	164.30	7,624.0	6,165.0	-3,235.1	-885.1	3,276.5	3.62	3.49	0.95
11,631.0	89.30	162.70	7,624.5	6,165.5	-3,295.5	-867.2	3,335.9	2.71	-0.95	-2.54
11,695.0	89.10	162.10	7,625.4	6,166.4	-3,356.5	-847.8	3,395.8	0.99	-0.31	-0.94
11,758.0	89.80	162.50	7,626.0	6,167.0	-3,416.5	-828.7	3,454.7	1.28	1.11	0.63
11,821.0	90.60	165.20	7,625.7	6,166.7	-3,477.0	-811.2	3,514.2	4.47	1.27	4.29
11,884.0	90.80	166.90	7,625.0	6,166.0	-3,538.1	-796.0	3,574.5	2.72	0.32	2.70
11,947.0	91.40	170.00	7,623.8	6,164.8	-3,599.9	-783.4	3,635.5	5.01	0.95	4.82
12,010.0	89.10	167.50	7,623.5	6,164.5	-3,661.6	-771.1	3,696.5	5.39	-3.65	-3.97
12,073.0	87.30	166.50	7,625.5	6,166.5	-3,723.0	-756.9	3,757.1	3.27	-2.86	-1.59
12,137.0	88.90	167.50	7,627.6	6,168.6	-3,785.3	-742.5	3,818.6	2.95	2.50	1.56
12,200.0	90.40	169.40	7,628.0	6,169.0	-3,847.0	-729.9	3,879.6	3.84	2.38	3.02
12,263.0	90.30	169.90	7,627.6	6,168.6	-3,909.0	-718.6	3,940.9	0.81	-0.16	0.79
12,326.0	89.10	166.30	7,627.9	6,168.9	-3,970.6	-705.6	4,001.8	6.02	-1.90	-5.71
12,389.0	88.30	167.90	7,629.3	6,170.3	-4,032.0	-691.6	4,062.3	2.84	-1.27	2.54
12,452.0	89.30	169.30	7,630.7	6,171.7	-4,093.8	-679.1	4,123.4	2.73	1.59	2.22
12,515.0	90.30	169.00	7,630.9	6,171.9	-4,155.6	-667.2	4,184.5	1.66	1.59	-0.48
12,578.0	90.50	167.50	7,630.4	6,171.4	-4,217.3	-654.4	4,245.5	2.40	0.32	-2.38
12,642.0	90.10	163.70	7,630.1	6,171.1	-4,279.3	-638.5	4,306.5	5.97	-0.63	-5.94
12,705.0	88.00	162.90	7,631.2	6,172.2	-4,339.6	-620.4	4,365.9	3.57	-3.33	-1.27
12,768.0	85.80	162.80	7,634.6	6,175.6	-4,399.7	-601.9	4,424.9	3.50	-3.49	-0.16
12,831.0	88.00	162.60	7,638.0	6,179.0	-4,459.8	-583.1	4,483.9	3.51	3.49	-0.32
12,894.0	88.40	162.50	7,639.9	6,180.9	-4,519.9	-564.3	4,543.0	0.65	0.63	-0.16
12,957.0	90.20	162.60	7,640.7	6,181.7	-4,580.0	-545.4	4,602.0	2.86	2.86	0.16
13,020.0	90.10	165.00	7,640.5	6,181.5	-4,640.4	-527.8	4,661.5	3.81	-0.16	3.81
13,083.0	90.60	166.60	7,640.2	6,181.2	-4,701.5	-512.3	4,721.7	2.66	0.79	2.54
13,146.0	91.20	168.30	7,639.2	6,180.2	-4,763.0	-498.7	4,782.4	2.86	0.95	2.70
13,209.0	90.10	165.70	7,638.5	6,179.5	-4,824.4	-484.5	4,843.0	4.48	-1.75	-4.13
13,272.0	88.70	163.60	7,639.1	6,180.1	-4,885.1	-467.8	4,902.8	4.01	-2.22	-3.33
13,335.0	88.80	164.20	7,640.5	6,181.5	-4,945.6	-450.3	4,962.3	0.97	0.16	0.95
13,398.0	87.60	164.80	7,642.5	6,183.5	-5,006.3	-433.5	5,022.0	2.13	-1.90	0.95
13,462.0	87.80	165.10	7,645.0	6,186.0	-5,068.1	-416.9	5,082.8	0.56	0.31	0.47
13,524.0	88.60	163.20	7,647.0	6,188.0	-5,127.7	-400.0	5,141.5	3.32	1.29	-3.06

Database:	20150813_13996' MD/7647' TVD	Local Co-ordinate Reference:	20150813_13996' MD/7647' TVD
Company:	City Petroleum - Myanmar	TVD Reference:	20150813_13996' MD/7647' TVD
Project:	20150813_13996' MD/7647' TVD	MD Reference:	20150813_13996' MD/7647' TVD
Site:	20150813_13996' MD/7647' TVD	North Reference:	20150813_13996' MD/7647' TVD
Well:	20150813_13996' MD/7647' TVD	Survey Calculation Method:	20150813_13996' MD/7647' TVD
Wellbore:	20150813_13996' MD/7647' TVD		
Design:	20150813_13996' MD/7647' TVD		

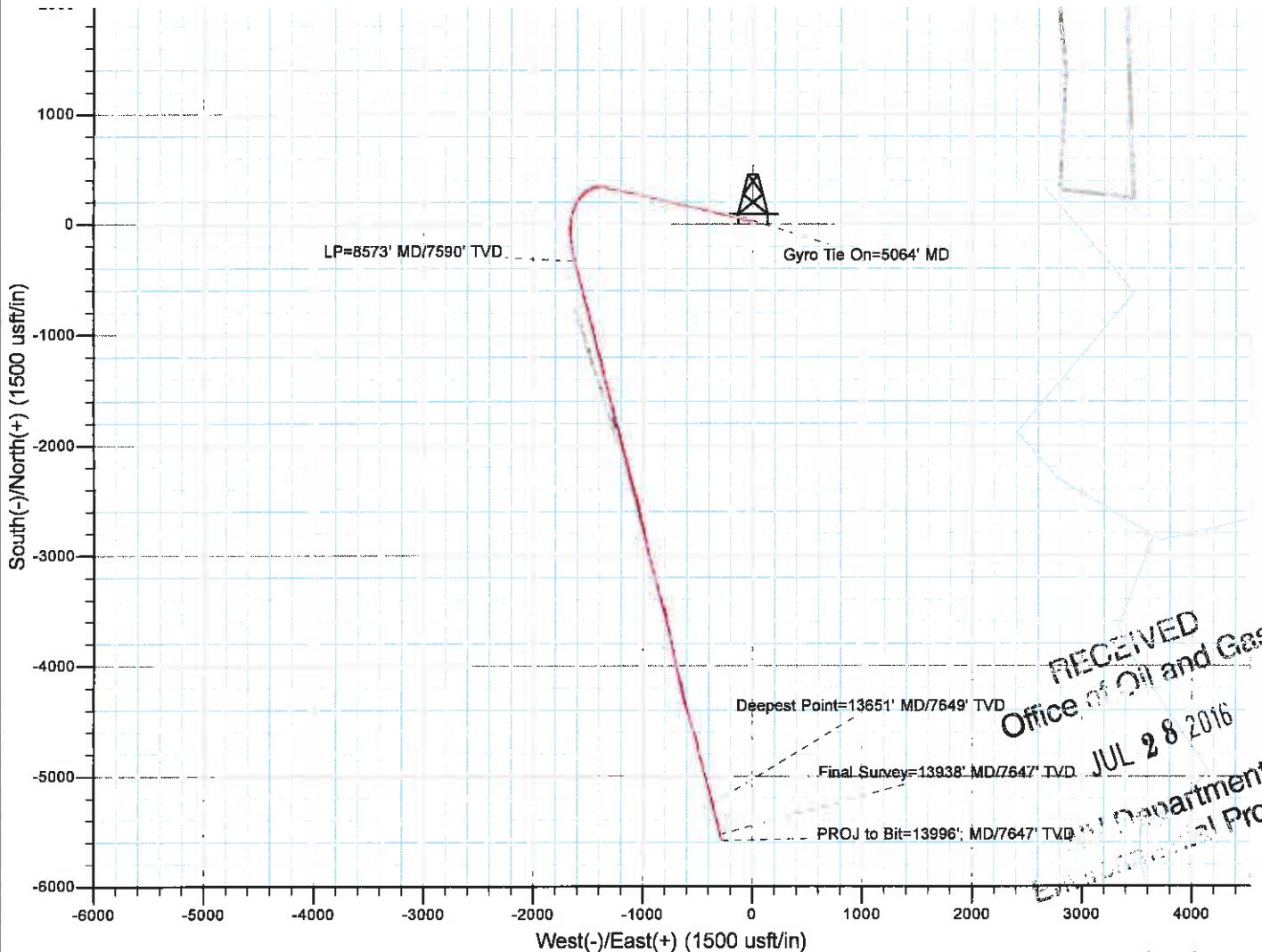
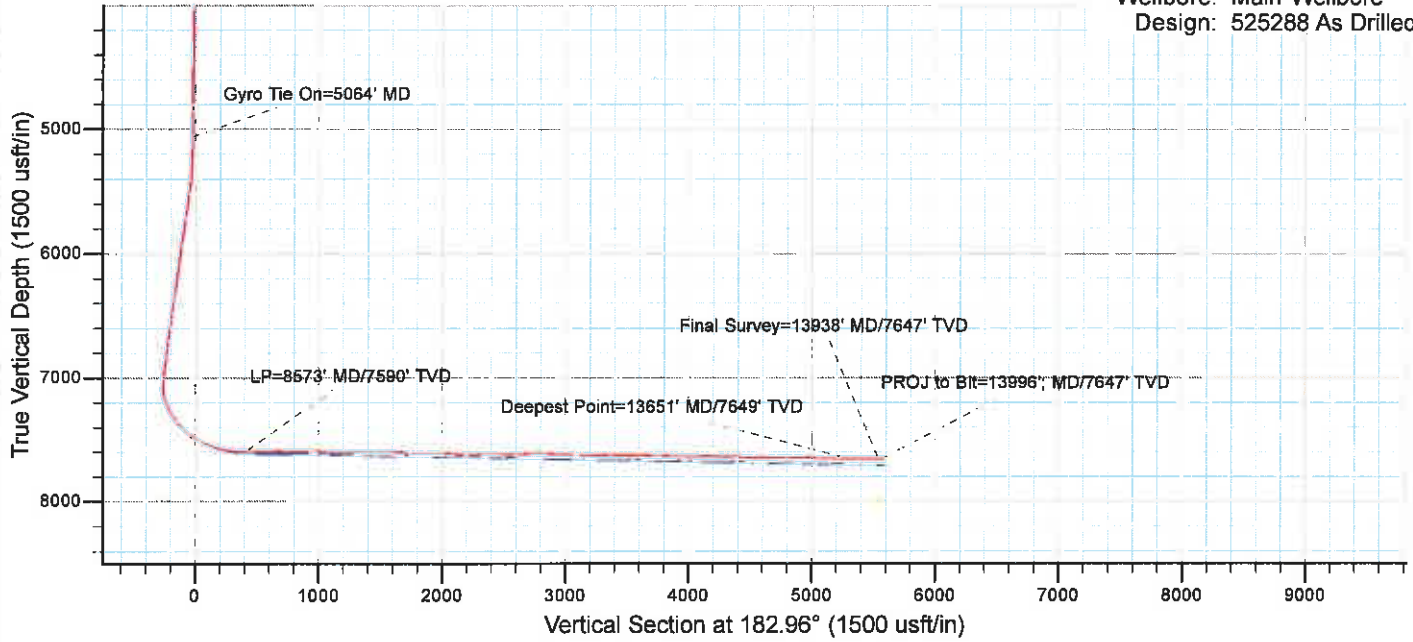
Measured Depth (usft)	Inclination (°)	Azimuth (°)	Vertical Depth (usft)	Subsea Depth (usft)	+N/-S (usft)	+E/-W (usft)	Vertical Section (usft)	Dogleg Rate (°/100usft)	Build Rate (°/100usft)	Turn Rate (°/100usft)
13,588.0	89.30	163.50	7,648.2	6,189.2	-5,189.0	-381.7	5,201.8	1.19	1.09	0.47
13,651.0	89.80	166.00	7,648.7	6,189.7	-5,249.8	-365.1	5,261.6	4.05	0.79	3.97
13,714.0	90.50	166.30	7,648.5	6,189.5	-5,310.9	-350.0	5,321.9	1.21	1.11	0.48
13,777.0	90.70	167.40	7,647.8	6,188.8	-5,372.3	-335.7	5,382.4	1.77	0.32	1.75
13,840.0	90.60	166.20	7,647.1	6,188.1	-5,433.6	-321.3	5,442.9	1.91	-0.16	-1.90
13,903.0	89.90	164.70	7,646.8	6,187.8	-5,494.6	-305.5	5,503.0	2.63	-1.11	-2.38
13,938.0	89.60	163.30	7,647.0	6,188.0	-5,528.2	-295.8	5,536.1	4.09	-0.86	-4.00
13,993.6	89.60	163.30	7,647.4	6,188.4	-5,581.5	-279.8	5,588.5	0.00	0.00	0.00
13,996.0	89.60	163.30	7,647.4	6,188.4	-5,583.8	-279.1	5,590.7	0.00	0.00	0.00

Measured Depth (usft)	Vertical Depth (usft)	Local Coordinates		Comment
		+N/-S (usft)	+E/-W (usft)	
5,084.1	5,063.9	33.2	-11.5	Gyro Tie On=5084' MD
8,573.0	7,589.7	-335.4	-1,625.6	LP=8573' MD/7590' TVD
13,651.0	7,648.7	-5,249.8	-365.1	Deepest Point=13651' MD/7649' TVD
13,938.0	7,647.0	-5,528.2	-295.8	Final Survey=13938' MD/7647' TVD
13,996.0	7,647.4	-5,583.8	-279.1	PROJ to Bit=13996'; MD/7647' TVD

Checked By: _____ Approved By: _____ Date: _____



Project: Wetzel County, WV
 Site: Wetzel County 515288
 Well: Well #515288
 Wellbore: Main Wellbore
 Design: 525288 As Drilled Surveys



RECEIVED
 Office of Oil and Gas
 JUL 28 2016
 West Virginia Department of Environmental Protection

10/28/2016