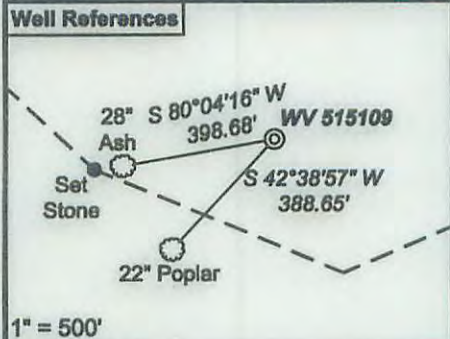


WV 515109 coordinates:
 NAD 27 N: 378,106.49 E: 1,684,908.84
 NAD 27 Lat: 39.632748 Long: -80.616847
 NAD 83 UTM N: 4,375,073.21 E: 632,943.40
WV 515109 Landing Point coordinates:
 NAD 27 N: 378,209.58 E: 1,684,580.54
 NAD 27 Lat: 39.633016 Long: -80.618398
 NAD 83 UTM N: 4,375,007.39 E: 632,809.95
WV 515109 Bottom Hole coordinates:
 NAD 27 N: 383,266.77 E: 1,683,346.25
 NAD 27 Lat: 39.548858 Long: -80.622827
 NAD 83 UTM N: 4,377,541.93 E: 632,414.35

West Virginia Coordinate System of 1927 (North Zone) based upon Differential GPS Measurements.
 Plat orientation, corner and well ties are based upon the grid north meridian.
 Well location references are based upon the grid north meridian.
 UTM coordinates are NAD83, Zone 17, Meters.



Lease No.	Acres	Owner
1.1187218222	239.903	Kenneth R. Mason, et al.

(⊕) Denotes Location of Well on United States Topographic Maps



I, the undersigned, hereby certify that this plat is correct to the best of my knowledge and belief and shows all the information required by law and the regulations issued and prescribed by the Department of Environmental Protection.

Ben R. Singleton
P.S. 2092

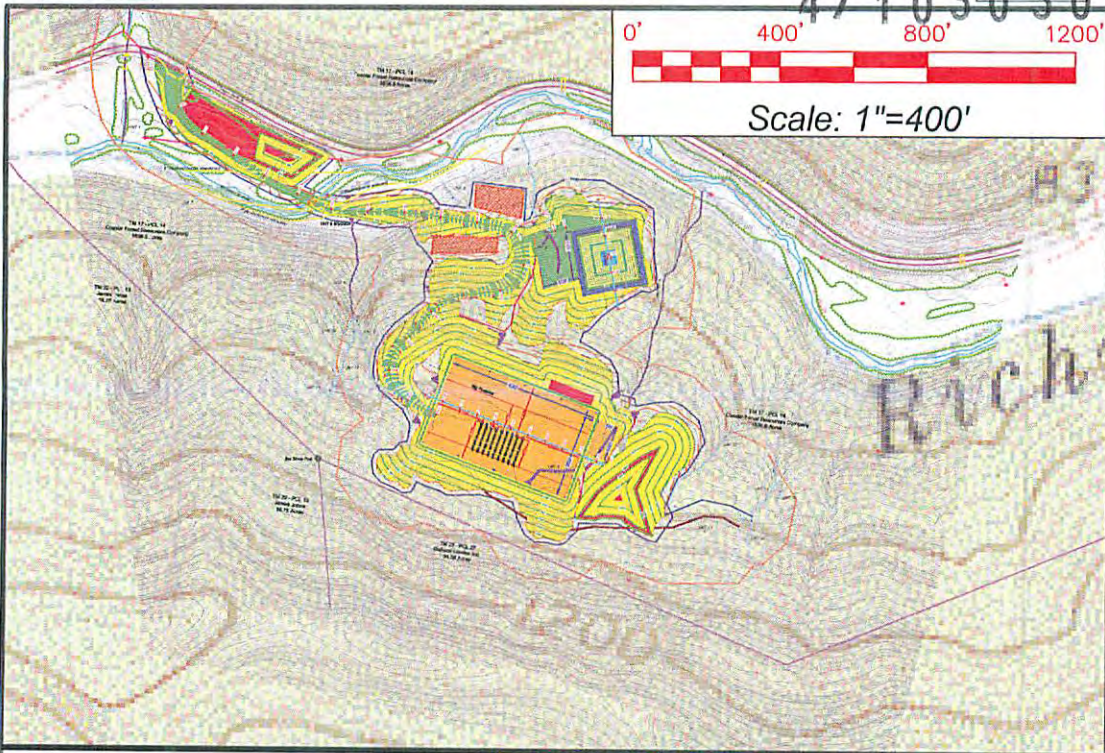


FILE NO: 174-13
 DRAWING NO: 174-13 Blg 360 H2
 SCALE: 1" = 2000'
 MINIMUM DEGREE OF ACCURACY: 1:2500
 PROVEN SOURCE OF ELEVATION: NGS CORS Station

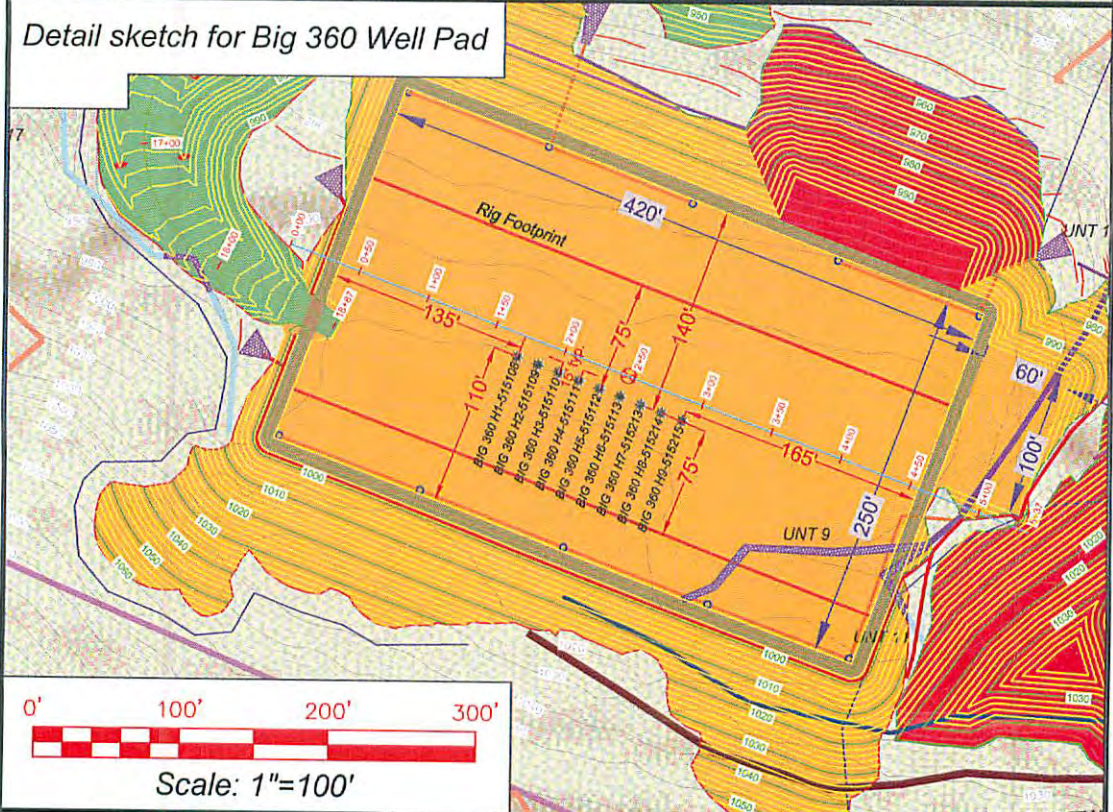
STATE OF WEST VIRGINIA
 DEPARTMENT OF ENVIRONMENTAL PROTECTION
OIL AND GAS DIVISION

DATE: December 4 20 15
 OPERATOR'S WELL NO. 515109
 API WELL NO. 47 - 103 - 03031 H6A
 STATE COUNTY PERMIT

WELL TYPE: OIL GAS LIQUID INJECTION WASTE DISPOSAL
 (IF GAS) PRODUCTION: STORAGE DEEP SHALLOW
 LOCATION: ELEVATION: Original Ground = 1008' Proposed Ground = 998' WATERSHED Richwood Run QUADRANGLE: Big Run
 DISTRICT: Grant COUNTY: Wetzel
 SURFACE OWNER: Coastal Forest Resources Co. f/k/a Coastal Lumber Company ACREAGE: 1,636.5
 ROYALTY OWNER: Mills-Wetzel Land, Inc., LEASE NO: 988530, ACREAGE: 659,
 PROPOSED WORK: DRILL CONVERT DRILL DEEPER FRACTURE OR STIMULATE PLUG OFF OLD FORMATION
 PERFORATE NEW FORMATION OTHER PHYSICAL CHANGE IN WELL (SPECIFY) _____
 PLUG AND ABANDON CLEAN OUT AND REPLUG TARGET FORMATION: Marcellus ESTIMATED DEPTH: 7,064'
 WELL OPERATOR: EQT Production Company DESIGNATED AGENT: Rex C. Ray
 ADDRESS: 115 Professional Place PO Box 280 Bridgeport, WV 26330 ADDRESS: 115 Professional Place PO Box 280 Bridgeport, WV 26330



Detail sketch for Big 360 Well Pad



SECTION OF THE Big Run 7.5' USGS QUADRANGLE		Proposed Disturbance Area	
Projected culvert inventory. (for bid purposes only)		Well Site Location	See Site Plan
15" minimum diameter culverts	See Site Plan	Proposed Access Road	See Site Plan
24" minimum diameter culverts	See Site Plan	Approximate Total Disturbance	See Site Plan
DRAWN BY: Dale Tomlin	DATE: July 31, 2014	FILE NO. 17413	DRAWING FILE NO. 17413 Rec Plan

RECEIVED
Office of Oil and Gas
Note: SEE SITE PLAN OF BIG 360 FOR COMPLETE GRADING & DRAINAGE CONSTRUCTION INCLUDING EROSION & SEDIMENT CONTROL DETAILS, ETC.

DEC 1 2015

WV Department of Environmental Protection



SURVEYING AND MAPPING SERVICES PERFORMED BY:
ALLEGHENY SURVEYS, INC.

Birch River Office
Phone: (304) 649-8606
Fax: (304) 649-8608

1-800-482-8606

237 Birch River Road
P.O. Box 438
Birch River, WV 26610