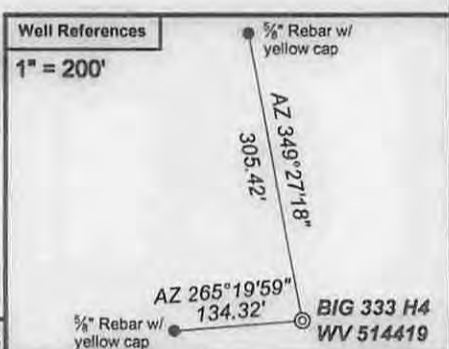


Notes:
 WV 514419 coordinates are
 NAD 27 N: 375,039.50 E: 1,692,029.60
 NAD 27 Lat: 39.524565 Long: 80.591782
 NAD 83 UTM N: 4,375,079.63 E: 535,101.59
 WV 514419 Landing Point coordinates are
 NAD 27 N: 375,472.90 E: 1,691,505.90
 NAD 27 Lat: 39.525738 Long: 80.593657
 NAD 83 UTM N: 4,375,208.89 E: 534,939.83
 WV 514419 Deflection Point coordinates are
 NAD 27 N: 378,837.94 E: 1,690,477.09
 NAD 27 Lat: 39.534941 Long: 80.597450
 NAD 83 UTM N: 4,376,228.96 E: 534,609.32
 WV 514419 Bottom Hole coordinates are
 NAD 27 N: 382,524.72 E: 1,689,625.93
 NAD 27 Lat: 39.545034 Long: 80.600628
 NAD 83 UTM N: 4,377,347.84 E: 534,331.31
 West Virginia Coordinate system of 1927 (North Zone) based upon Differential GPS Measurements. Plat orientation, corner and well ties are based upon the grid north meridian. Well location references are based upon the grid north meridian. UTM coordinates are NAD83, Zone 17, Meters.

- ⊙ Proposed Gas Well
 - Located Corner, as noted
 - Surface Tract Lines
 - Reference Line
 - Lease Boundary
 - Creek or Drain
 - WV County Route
 - WV State Route
- (⊙) Denotes Location of Well on United States Topographic Maps



I, the undersigned, hereby certify that this plat is correct to the best of my knowledge and belief and shows all the information required by law and the regulations issued and prescribed by the Department of Environmental Protection.

Ben R. Singleton
 P.S. 2092



FILE NO: 33-15
 DRAWING NO: 33-15 BIG 333 H4
 SCALE: 1" = 2000'
 MINIMUM DEGREE OF ACCURACY: 1:2500
 PROVEN SOURCE OF ELEVATION: NGS CORS Station

STATE OF WEST VIRGINIA
 DEPARTMENT OF ENVIRONMENTAL PROTECTION
 OIL AND GAS DIVISION

DATE: June 9 20 15
 OPERATOR'S WELL NO.: 514419
 API WELL NO
 47 - 103 - 03036
 STATE COUNTY PERMIT

WELL TYPE: OIL GAS LIQUID INJECTION WASTE DISPOSAL
 (IF GAS) PRODUCTION: STORAGE DEEP SHALLOW
 LOCATION: ELEVATION: As-Built - 1452' WATERSHED Aunty Run of South Fork Fishing Creek QUADRANGLE: Big Run
 DISTRICT: Grant COUNTY: Wetzel
 SURFACE OWNER: Coastal Forest Resources Co., d/b/a Coastal Timberlands Co. ACREEGE: 283.6±
 ROYALTY OWNER: Alex Hart, et al. LEASE NO: 190015 ACREEGE: 285±
 PROPOSED WORK: DRILL CONVERT DRILL DEEPER FRACTURE OR STIMULATE PLUG OFF OLD FORMATION
 PERFORATE NEW FORMATION OTHER PHYSICAL CHANGE IN WELL (SPECIFY)
 PLUG AND ABANDON CLEAN OUT AND REPLUG TARGET FORMATION: Marcellus ESTIMATED DEPTH: TVD 6,602'

WELL OPERATOR: EQT Production Company DESIGNATED AGENT: Rex C. Ray
 ADDRESS: 115 Professional Place PO Box 280 ADDRESS: 115 Professional Place PO Box 280
 Bridgeport, WV 26330 Bridgeport, WV 26330

HART LEASE BIG333 WELL NO.S WV 514416 & WV 514419

4710303036
MOD



NOTE: SEE SITE PLAN
BIG333 FOR COMPLETE
CONSTRUCTION &
EROSION & SEDIMENT
CONTROL DETAILS.

MATCH LINE

SHEET 1

SHEET 2 OF 2
SCALE: 1"=500'

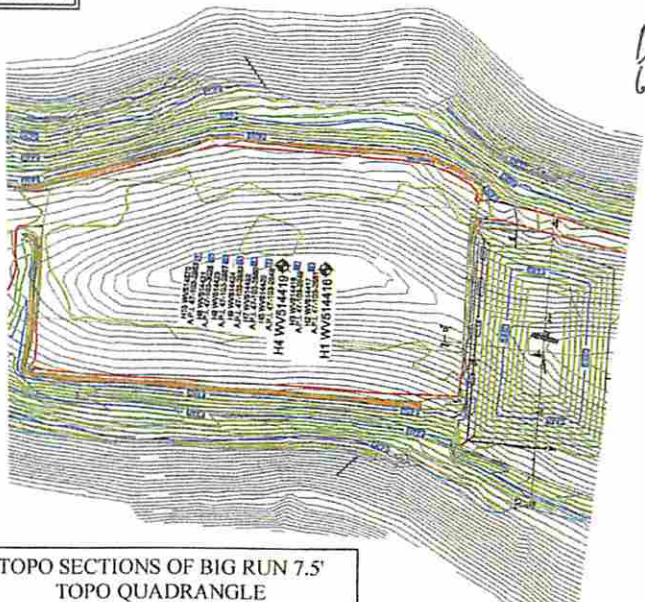


Detail Sketch for Proposed BIG333 Well No.s WV 514416 & WV 514419

NOTE: SEE SITE PLAN
BIG333 FOR COMPLETE
CONSTRUCTION &
EROSION & SEDIMENT
CONTROL DETAILS.



Not To Scale



Professional Energy Consultants
DIVISION OF GEOTECHNICAL SURVEYING, INC.



SLS
SURVEYORS
ENGINEERS
ENVIRONMENTAL
PROJECT MGMT.

(204) 452-9634 WWW.SLSURVEYS.COM

DRAWN BY K.D.W.	FILE NO. 7856	DATE 08-21-14	CADD FILE: 7856RECDG333.dwg
--------------------	------------------	------------------	--------------------------------

TOPO SECTIONS OF BIG RUN 7.5'
TOPO QUADRANGLE

06/12/2015