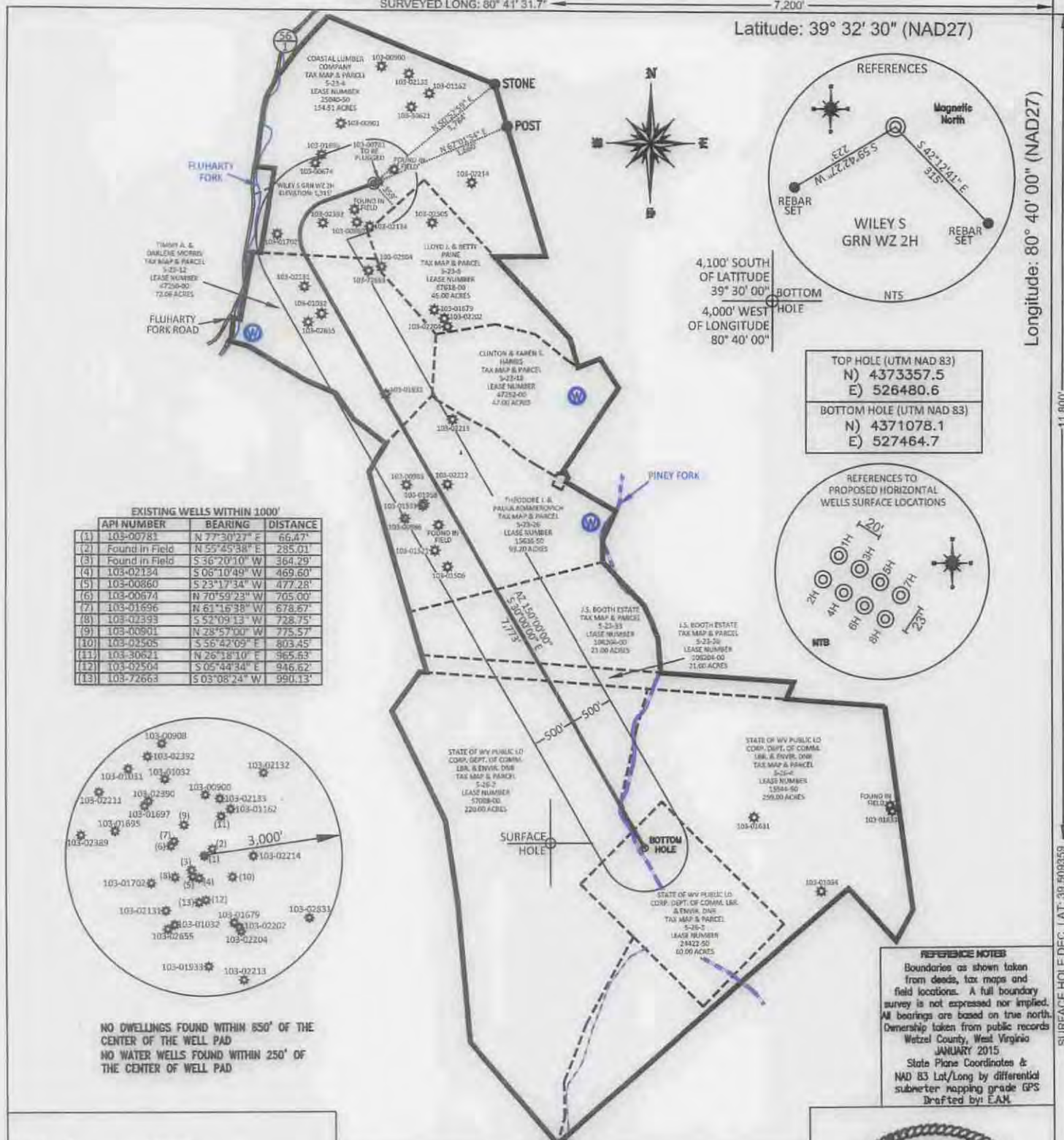


SURFACE HOLE DEC. LONG: 80.692148
 SURVEYED LONG: 80° 41' 31.7"

7,200'

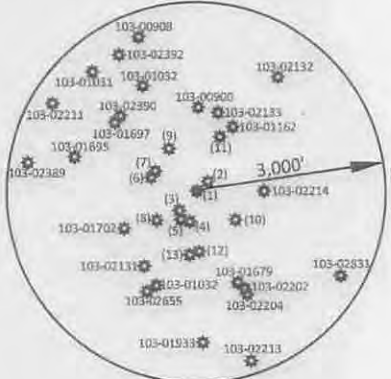
Latitude: 39° 32' 30" (NAD27)

Longitude: 80° 40' 00" (NAD27)



EXISTING WELLS WITHIN 1000'

API NUMBER	BEARING	DISTANCE
(1) 103-00781	N 77° 30' 27" E	66.47'
(2) Found in Field	N 57° 45' 38" E	285.01'
(3) Found in Field	S 36° 20' 10" W	364.29'
(4) 103-02124	S 06° 10' 49" W	469.60'
(5) 103-00860	S 23° 17' 34" W	477.28'
(6) 103-00674	N 70° 53' 23" W	705.00'
(7) 103-01696	N 61° 16' 38" W	678.67'
(8) 103-02393	S 52° 09' 13" W	728.75'
(9) 103-00801	N 28° 57' 10" W	775.57'
(10) 103-02505	S 56° 42' 09" E	803.45'
(11) 103-30621	N 26° 18' 10" E	365.63'
(12) 103-02504	S 05° 44' 34" E	946.62'
(13) 103-72663	S 03° 08' 24" W	990.13'



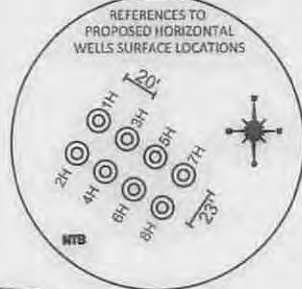
NO DWELLINGS FOUND WITHIN 850' OF THE CENTER OF THE WELL PAD
 NO WATER WELLS FOUND WITHIN 250' OF THE CENTER OF WELL PAD

TOP HOLE (UTM NAD 83)

N) 4373357.5
E) 526480.6

BOTTOM HOLE (UTM NAD 83)

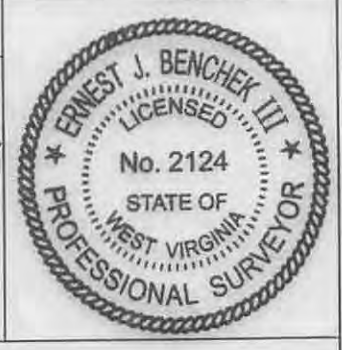
N) 4371078.1
E) 527464.7



REFERENCE NOTES
 Boundaries as shown taken from deeds, tax maps and field locations. A full boundary survey is not expressed nor implied. All bearings are based on true north. Ownership taken from public records Wetzel County, West Virginia JANUARY 2015
 State Plane Coordinates & NAD 83 Lat/Long by differential submeter mapping grade GPS
 Drafted by E.A.H.

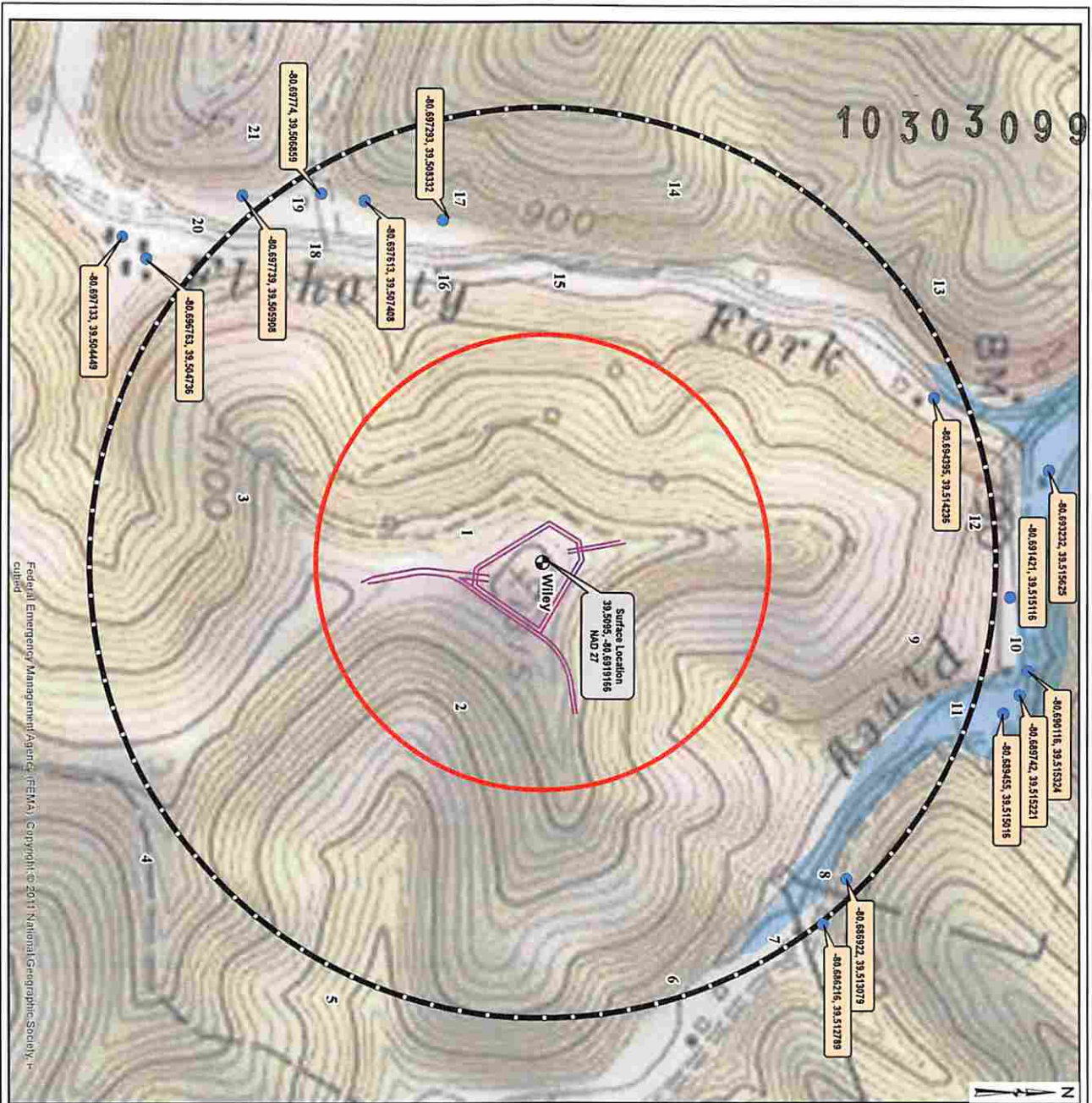
FILE #: AE003
 DRAWING #: 2482
 SCALE: PLAT - 1" = 1600'
 TICK MARK - 1" = 2000'
 MINIMUM DEGREE OF ACCURACY: 1/200
 PROVEN SOURCE OF ELEVATION: SUBMETER MAPPING GRADE GPS

I, THE UNDERSIGNED, HEREBY CERTIFY THAT THIS PLAT IS CORRECT TO THE BEST OF MY KNOWLEDGE AND BELIEF AND SHOWS ALL THE INFORMATION REQUIRED BY LAW AND THE REGULATIONS ISSUED AND PRESCRIBED BY THE DEPARTMENT OF ENVIRONMENTAL PROTECTION.
 Signed: *[Signature]*
 L.L.S. #2124: Ernest J. Benchek III



(+) DENOTES LOCATION OF WELL ON UNITED STATES TOPOGRAPHIC MAPS WVDEP
 OFFICE OF OIL & GAS
 601 57TH STREET
 CHARLESTON, WV 25304
 Well Type: Oil Waste Diposal Production Deep
 Gas Liquid Injection Storage Shallow
 WATERSHED: FISHING CREEK
 COUNTY/DISTRICT: WETZEL / GREEN
 SURFACE OWNER: COASTAL LUMBER COMPANY
 OIL & GAS ROYALTY OWNER: William H. McCoy
 LEASE NUMBERS: _____
 DRILL CONVERT DRILL DEEPER REDRILL FRACTURE OR STIMULATE
 PLUG OFF FORMATION PERFORATE NEW FORMATION PLUG & ABANDON
 CLEAN OUT & REPLUG OTHER CHANGE (SPECIFY): _____
 TARGET FORMATION: MARCELLUS
 WELL OPERATOR: American Energy-Marcellus LLC.
 ADDRESS: 3501 NW 63rd Street
 CITY: Oklahoma City STATE: OK ZIP CODE: 73116
 DATE: FEBRUARY 24, 2015
 OPERATOR'S WELL #: WILEY S GRN WZ 2H
 API WELL #: 47 103 03099 H6A
 STATE COUNTY PERMIT
 ELEVATION: 1315' = Current
 1286.29' = Proposed
 QUADRANGLE: PINE GROVE CENTER POINT, WV
 ACREAGE: 154.51 +/- 06/26/2015
 900.77 +/-
 ESTIMATED DEPTH: TVD: 7,267' TMD: 15,900'
 DESIGNATED AGENT: Eric B. Gillespie
 ADDRESS: 103 Taryn Lane
 CITY: Cross Lanes STATE: WV ZIP CODE: 25313

SURFACE HOLE DEC. LAT: 39.509359 SURVEYED LAT: 39° 30' 33.7"



Federal Emergency Management Agency (FEMA) | Copyright © 2011 National Geographic Society, Inc.

PARCEL NO.	OWNER	ADDRESS	APPROX. ACRES
01 200000000	WETZEL COUNTY	WETZEL COUNTY	1.00
02 200000000	WETZEL COUNTY	WETZEL COUNTY	1.00
03 200000000	WETZEL COUNTY	WETZEL COUNTY	1.00
04 200000000	WETZEL COUNTY	WETZEL COUNTY	1.00
05 200000000	WETZEL COUNTY	WETZEL COUNTY	1.00
06 200000000	WETZEL COUNTY	WETZEL COUNTY	1.00
07 200000000	WETZEL COUNTY	WETZEL COUNTY	1.00
08 200000000	WETZEL COUNTY	WETZEL COUNTY	1.00
09 200000000	WETZEL COUNTY	WETZEL COUNTY	1.00
10 200000000	WETZEL COUNTY	WETZEL COUNTY	1.00
11 200000000	WETZEL COUNTY	WETZEL COUNTY	1.00
12 200000000	WETZEL COUNTY	WETZEL COUNTY	1.00
13 200000000	WETZEL COUNTY	WETZEL COUNTY	1.00
14 200000000	WETZEL COUNTY	WETZEL COUNTY	1.00
15 200000000	WETZEL COUNTY	WETZEL COUNTY	1.00
16 200000000	WETZEL COUNTY	WETZEL COUNTY	1.00
17 200000000	WETZEL COUNTY	WETZEL COUNTY	1.00
18 200000000	WETZEL COUNTY	WETZEL COUNTY	1.00
19 200000000	WETZEL COUNTY	WETZEL COUNTY	1.00
20 200000000	WETZEL COUNTY	WETZEL COUNTY	1.00
21 200000000	WETZEL COUNTY	WETZEL COUNTY	1.00

PARCEL NO.	OWNER	ADDRESS	APPROX. ACRES
01 200000000	WETZEL COUNTY	WETZEL COUNTY	1.00
02 200000000	WETZEL COUNTY	WETZEL COUNTY	1.00
03 200000000	WETZEL COUNTY	WETZEL COUNTY	1.00
04 200000000	WETZEL COUNTY	WETZEL COUNTY	1.00
05 200000000	WETZEL COUNTY	WETZEL COUNTY	1.00
06 200000000	WETZEL COUNTY	WETZEL COUNTY	1.00
07 200000000	WETZEL COUNTY	WETZEL COUNTY	1.00
08 200000000	WETZEL COUNTY	WETZEL COUNTY	1.00
09 200000000	WETZEL COUNTY	WETZEL COUNTY	1.00
10 200000000	WETZEL COUNTY	WETZEL COUNTY	1.00
11 200000000	WETZEL COUNTY	WETZEL COUNTY	1.00
12 200000000	WETZEL COUNTY	WETZEL COUNTY	1.00
13 200000000	WETZEL COUNTY	WETZEL COUNTY	1.00
14 200000000	WETZEL COUNTY	WETZEL COUNTY	1.00
15 200000000	WETZEL COUNTY	WETZEL COUNTY	1.00
16 200000000	WETZEL COUNTY	WETZEL COUNTY	1.00
17 200000000	WETZEL COUNTY	WETZEL COUNTY	1.00
18 200000000	WETZEL COUNTY	WETZEL COUNTY	1.00
19 200000000	WETZEL COUNTY	WETZEL COUNTY	1.00
20 200000000	WETZEL COUNTY	WETZEL COUNTY	1.00
21 200000000	WETZEL COUNTY	WETZEL COUNTY	1.00

- AEU Surface Location
- Access Road
- Streams and Rivers
- Water Well Location
- AEU Testing Radius (2000')
- WWDER Required Testing Radius (1000')
- Wetzel County Parcel Line
- 100 Year Flood Zones
- WW County Lines



ISSUE
EXHIBIT
DATE: 02.18.2015
JOB NO.: CHD
DRAWN: CHD
SHEET NO. 1



WATER SAMPLING FIELD MAP

WILEY WELL PAD
WETZEL COUNTY, WV



NO.	DATE	DESCRIPTION

06/26/2015