

WW-7  
8-30-06



West Virginia Department of Environmental Protection  
Office of Oil and Gas  
**WELL LOCATION FORM: GPS**

API: 47-103-71019 WELL NO.: 6728

FARM NAME: GENINE ROBINSON

RESPONSIBLE PARTY NAME: CONSOLIDATION COAL COMPANY

COUNTY: WETZEL DISTRICT: GRANT

QUADRANGLE: FOLSOM WV 7.5'

SURFACE OWNER: LARRY HOOD

ROYALTY OWNER: \_\_\_\_\_

UTM GPS NORTHING: 4,370,466 m

UTM GPS EASTING: 542,517 m GPS ELEVATION: 351 m

(1151.)

The Responsible Party named above has chosen to submit GPS coordinates in lieu of preparing a new well location plat for a plugging permit or assigned API number on the above well. The Office of Oil and Gas will not accept GPS coordinates that do not meet the following requirements:

- Datum: NAD 1983, Zone: 17 North, Coordinate Units: meters, Altitude: height above mean sea level (MSL) – meters.
- Accuracy to Datum – 3.05 meters
- Data Collection Method:

Survey grade GPS \_\_\_\_\_: Post Processed Differential \_\_\_\_\_  
 Real-Time Differential \_\_\_\_\_  
 Mapping Grade GPS X: Post Processed Differential X  
 Real-Time Differential \_\_\_\_\_

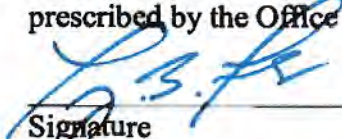
RECEIVED  
Office of Oil and Gas

APR 22 2019

WV Department of  
Environmental Protection

- Letter size copy of the topography map showing the well location.

I the undersigned, hereby certify this data is correct to the best of my knowledge and belief and shows all the information required by law and the regulations issued and prescribed by the Office of Oil and Gas.

  
Signature

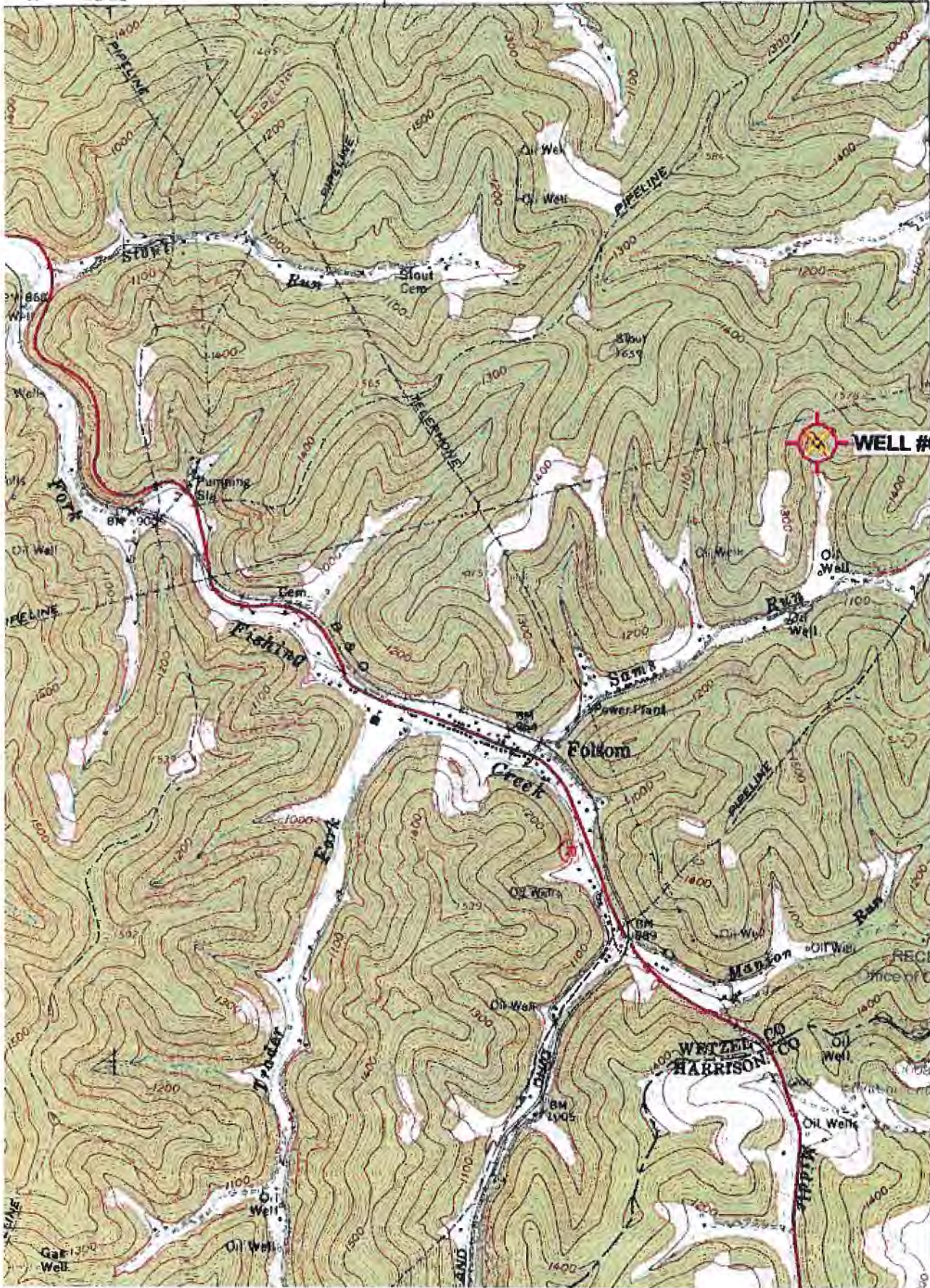
Professional Surveyor  
Title

APRIL 18, 2019  
Date

FOLSOM QUADRANGLE  
WEST VIRGINIA  
7.5 MINUTE SERIES (TOPOGRAPHIC)  
NE/4 CENTER POINT 15' QUADRANGLE

4963 W SW  
(GLOVER GAP)

39 32'30" 40 1 710 000 FEET 42 80°30' 39°30'



**WELL #6728**

RECEIVED  
Office of Oil and Gas  
2019  
27'30"  
Department of  
Environmental Protection

467