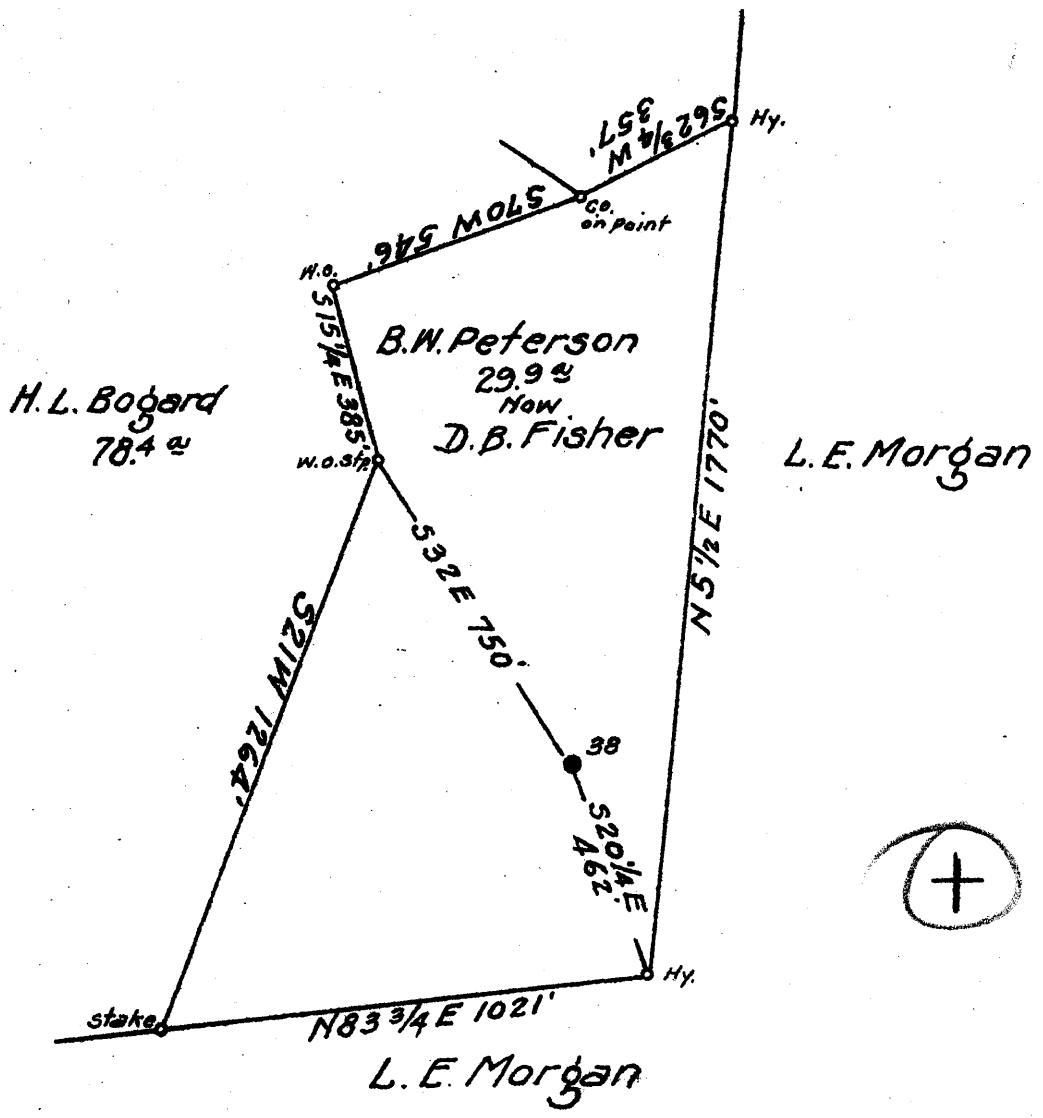


Latitude 39° 35'

Longitude 80° 30'



Coal: *Alleghany Real Estate Co.*
Fairmont, W. Va.

Surface: *D. B. Fisher*
Smithfield, W. Va.

1.94 ~~1.98~~ W

5.02 ~~5.11~~ X

New Location...
Drill Deeper...
Abandonment...

SEP 28 1942

N4E5 Map N59

Company South Penn Natural Gas Co.
 Address Parkersburg, W. Va.
 Farm B. W. Peterson
 Tract _____ Acres 4564 Lease No. 10052
 Well (Farm) No. 38 Serial No. _____
 Elevation (Spirit Level) 1456.95
 Quadrangle Littleton
 County Wetzel District Grant
 Engineer Emmon Haines
 Engineer's Registration No. _____
 File No. _____ Drawing No. _____
 Date Feb 26 1942 1" = 400'

STATE OF WEST VIRGINIA
DEPARTMENT OF MINES
OIL AND GAS DIVISION
CHARLESTON

WELL LOCATION MAP
FILE NO. WET-425-A

+ Denotes location of well on United States Topographic Maps, scale 1 to 62,500. latitude and longitude lines being represented by border lines as shown.

- Denotes one inch spaces on border line of original tracing.

STATE OF WEST VIRGINIA
DEPARTMENT OF MINES
OIL AND GAS DIVISION

893

WELL RECORD

Permit No. 425-A

Oil or Gas Well OIL
(KIND)

Company South Penn Natural Gas Company
Address Union Trust Bldg. Parkersburg, W. Va.
Farm B. W. Peterson Acres 4564
Location (waters) -----
Well No. 38 Elev. 1456.95
District Grant County Wetzel
The surface of tract is owned in fee by D. B. Fisher
Smithfield, Address W. Va.
Mineral rights are owned by Nampeco Corporation
605 Wheeling Bldg. & Trust Co. Bldg. Address Wheeling, W. Va.
Drilling commenced June 2, 1897
Drilling completed July 28, 1897
Date Shot See below From --- To ---
With ---

Casing and Tubing	Used in Drilling	Left in Well	Packers
Size			
16			Kind of Packer -
13			-
10	925' (Pulled)		Size of -
8 1/4	1665' (Pulled)		-
6 5/8	2257'		Depth set -
5 3/16	348' 8"		-
3			Perf. top -
2			Perf. bottom -
Liners Used	684' 4" X 4"		Perf. top -
			Perf. bottom -

Open Flow /10ths Water in --- Inch
/10ths Merc. in --- Inch
Volume --- Cu. Ft.
Rock Pressure --- lbs. --- hrs.
Oil 50 bbls., 1st 24 hrs.
Fresh water --- feet --- feet
Salt water --- feet --- feet

CASING CEMENTED --- SIZE --- No. Ft. --- Date ---
COAL WAS ENCOUNTERED AT 1230 FEET 36 INCHES
--- FEET --- INCHES --- FEET --- INCHES
--- FEET --- INCHES --- FEET --- INCHES

Formation	Color	Hard or Soft	Top	Bottom	Oil, Gas or Water	Depth Found	Remarks
Pittsburgh Coal			1230	1233			
Salt Sand			2130	2240			
Little Lime			2415	2430			
Pencil Cave			2430	2445			
Big Lime			2445	2525			
Big Injun			2525		1st Pay	2622	
Total Depth				2636			
DRILLED DEEPER:							
Big Injun			2525	2700			
Stray			3322	3336			
Gordon			3346	3376			
Total Depth				3379			

SHOT RECORD:
May 11 - 1904 - 10 Qts.
Apr. 10-1908 - 60 "
Oct. 22-1908 - 120 "

