



West Virginia Department of Environmental Protection  
Office of Oil and Gas  
**WELL LOCATION FORM: GPS**

API: 47-103-90018 WELL NO.: 8188

FARM NAME: A.A. CUNNINGHAM

RESPONSIBLE PARTY NAME: CONSOLIDATION COAL COMPANY

COUNTY: WETZEL DISTRICT: CHURCH

QUADRANGLE: HUNDRED WV, PA 7.5'

SURFACE OWNER: FLOYD E. & FRANCIS POSTLETHWAIT

ROYALTY OWNER: \_\_\_\_\_

UTM GPS NORTHING: 4,389,126 m

UTM GPS EASTING: 550,647 m GPS ELEVATION: 353 m

The Responsible Party named above has chosen to submit GPS coordinates in lieu of preparing a new well location plat for a plugging permit or assigned API number on the above well. The Office of Oil and Gas will not accept GPS coordinates that do not meet the following requirements:

1. Datum: NAD 1983, Zone: 17 North, Coordinate Units: meters, Altitude: height above mean sea level (MSL) – meters.
2. Accuracy to Datum – 3.05 meters
3. Data Collection Method:

Survey grade GPS \_\_\_\_\_: Post Processed Differential \_\_\_\_\_

Real-Time Differential \_\_\_\_\_

Mapping Grade GPS X: Post Processed Differential X

Real-Time Differential \_\_\_\_\_

RECEIVED  
Office of Oil and Gas

MAY 13 2019

WV Department of  
Environmental Protection

4. **Letter size copy of the topography map showing the well location.**

I the undersigned, hereby certify this data is correct to the best of my knowledge and belief and shows all the information required by law and the regulations issued and prescribed by the Office of Oil and Gas.

[Signature]  
Signature

Professional Surveyor  
Title

MAY 2, 2019  
Date



**WELL #8188**

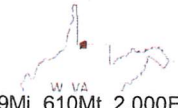
4391  
40'  
4389  
4388  
120 000 FEET (PA.)  
RECEIVED  
Office of Oil and Gas  
MAY 13 2019  
WV Department of Environmental Protection  
39°37'30"  
80°22'30"

15 MI. 23 MI.  
25'  
1 250 000 FEET (PA.) 51  
52  
53  
553000'E

1 MILE  
3200 FEET  
1:250,000

ROAD CLASSIFICATION

- Heavy-duty ————
- Medium-duty - - - - -
- Light-duty ————
- Unimproved dirt - - - - -
- U.S. Route (circle with star)
- State Route (circle with dot)



(MANNINGTON)  
4993' N 113 SE

Well# 8188

HUNDRED WV, PA 7.5' Quad  
Scale: 1" = 500'

1500



1400

1400

LINE

1300

Well# 8188

Old Harmony  
Cem

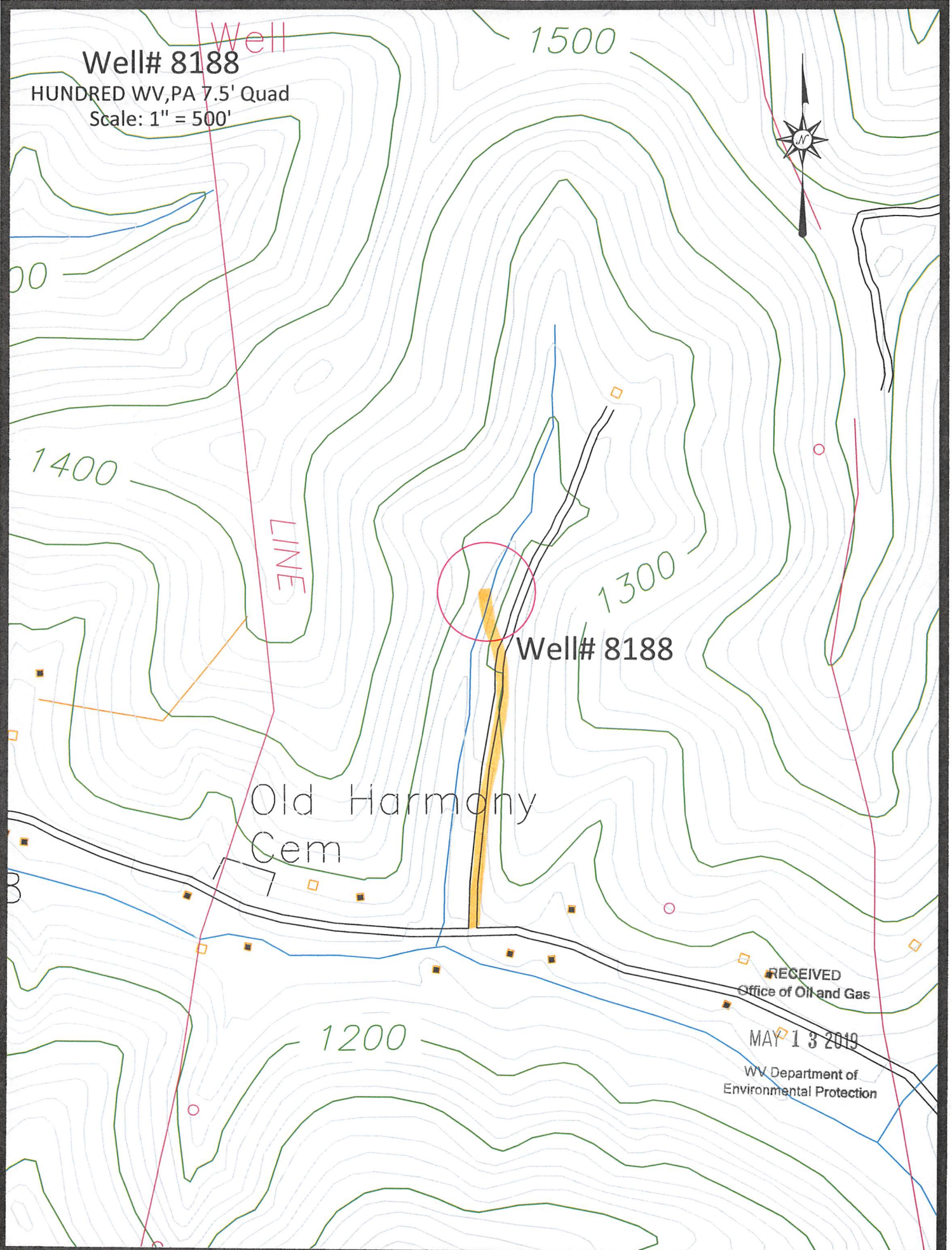
RECEIVED  
Office of Oil and Gas

MAY 13 2019

WV Department of  
Environmental Protection

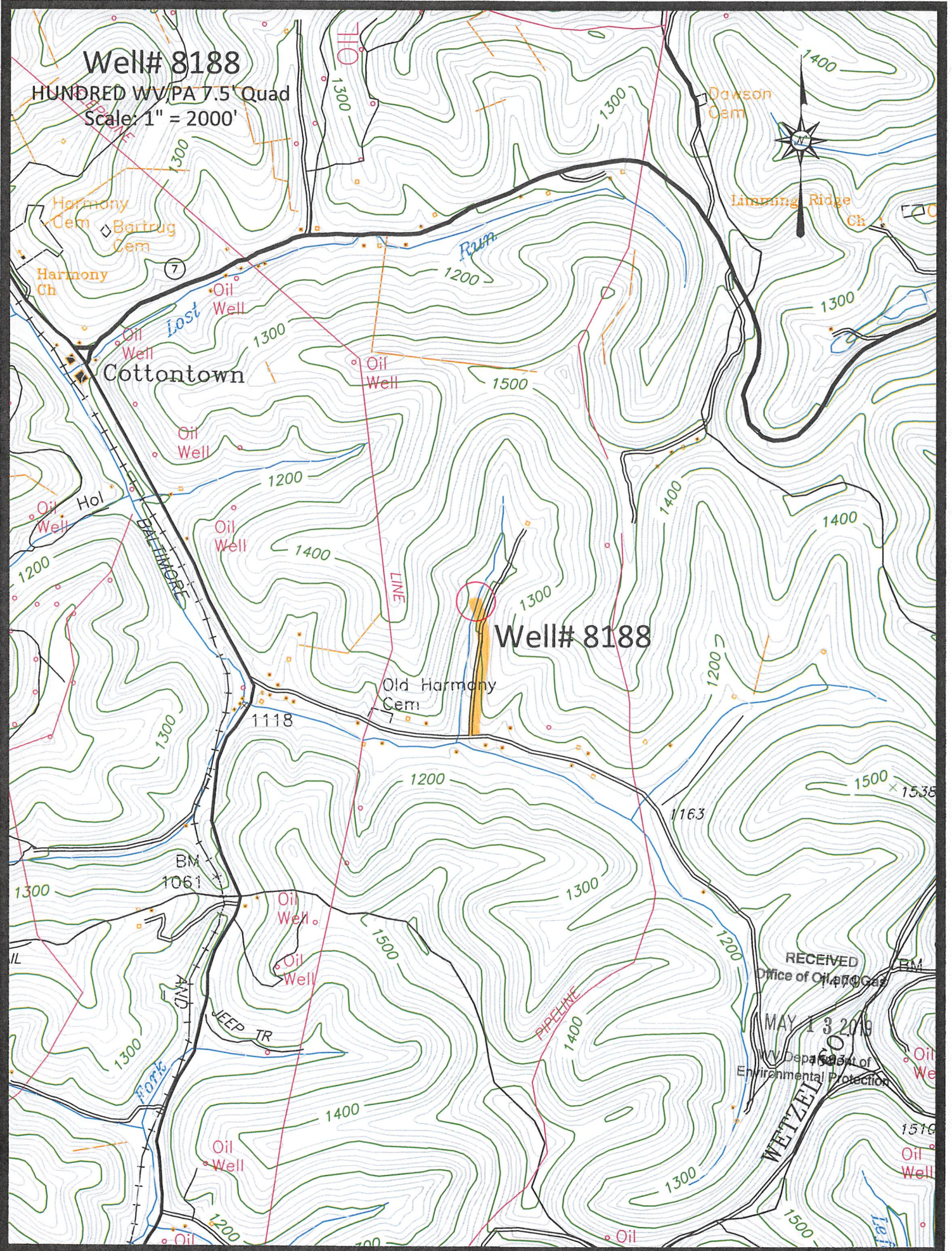
1200

Access Road



# Well# 8188

HUNDRED WV/PA 7.5' Quad  
Scale: 1" = 2000'



ACCESS ROAD