



Where energy meets innovation.

Actual Wellpath Report

Sizemore 13H AWP Proj: 22549'

Page 1 of 14



REFERENCE WELLPATH IDENTIFICATION

Operator	EQT PRODUCTION COMPANY	Well	Sizemore 13H
Field	Wetzel	API	47-103-03350-00-00
Facility	Sizemore Pad	Wellbore	Sizemore 13H AWB
Slot	Slot 13		

REPORT SETUP INFORMATION

Projection System	NAD27 / Lambert West Virginia SP, Northern Zone (4701), US feet	Software System	WellArchitect® 6.0
North Reference	Grid	User	Hilpthop
Scale	0.999941	Report Generated	3/15/2021 at 4:49:33 PM
Convergence at slot	0.66° West	Database	WA_MPL_EASTERNUS_Defn

WELLPATH LOCATION

	Local coordinates		Grid coordinates		Geographic coordinates	
	North[ft]	East[ft]	Easting[US ft]	Northing[US ft]	Latitude	Longitude
Slot Location	-19.13	-5.82	1710218.90	418997.60	39°38'45.0010"N	80°31'44.7254"W
Facility Reference Pt			1710224.72	419016.73	39°38'45.1907"N	80°31'44.6538"W
Field Reference Pt			1688243.35	385255.46	39°33'8.9436"N	80°36'20.3370"W

WELLPATH DATUM

Calculation method	Minimum curvature	Patterson 292 (RKB) to Facility Vertical Datum	1176.00ft
Horizontal Reference Pt	Slot	Patterson 292 (RKB) to Mean Sea Level	1176.00ft
Vertical Reference Pt	Patterson 292 (RKB)	Patterson 292 (RKB) to Ground Level at Slot (Slot 13)	28.00ft
MD Reference Pt	Patterson 292 (RKB)	Section Origin	N 0.00, E 0.00 ft
Field Vertical Reference	Mean Sea Level	Section Azimuth	321.28°

RECEIVED
 Office of Oil and Gas
 WV Department of
 Environmental Protection
 FEB 14 2022



Where energy meets innovation.

Actual Wellpath Report

Sizemore 13H AWP Proj: 22549'

Page 2 of 14



REFERENCE WELLPATH IDENTIFICATION

Operator	EQT PRODUCTION COMPANY	Well	Sizemore 13H
Field	Wetzel	API	47-103-03350-00-00
Facility	Sizemore Pad	Wellbore	Sizemore 13H AWB
Slot	Slot 13		

WELLPATH DATA (272 stations) † = interpolated, ‡ = extrapolated station

MD (ft)	Inclination (°)	Azimuth (°)	TVD (ft)	Vert Sect (ft)	North (ft)	East (ft)	Grid East [US ft]	Grid North [US ft]	Latitude	Longitude	Closure Dist (ft)	Closure Dir (°)	DLS (°/100ft)	Build Rate (°/100ft)	Turn Rate (°/100ft)
0.00†	0.000	146.840	0.00	0.00	0.00	0.00	1710218.90	418997.60	39°38'45.0010"N	80°31'44.7254"W	0.00	0.000	0.00	0.00	0.00
28.00	0.000	146.840	28.00	0.00	0.00	0.00	1710218.90	418997.60	39°38'45.0010"N	80°31'44.7254"W	0.00	0.000	0.00	0.00	0.00
115.00	0.150	146.840	115.00	-0.11	-0.10	0.06	1710218.96	418997.50	39°38'45.0000"N	80°31'44.7246"W	0.11	146.840	0.17	0.17	0.00
140.00	0.160	159.450	140.00	-0.18	-0.16	0.09	1710218.99	418997.44	39°38'44.9994"N	80°31'44.7242"W	0.18	149.255	0.14	0.04	50.44
165.00	0.150	167.420	165.00	-0.24	-0.22	0.11	1710219.01	418997.38	39°38'44.9988"N	80°31'44.7239"W	0.25	153.060	0.09	-0.04	31.88
190.00	0.160	153.430	190.00	-0.31	-0.28	0.13	1710219.03	418997.32	39°38'44.9982"N	80°31'44.7236"W	0.31	154.585	0.16	0.04	-55.96
215.00	0.140	153.120	215.00	-0.37	-0.34	0.16	1710219.06	418997.26	39°38'44.9976"N	80°31'44.7232"W	0.38	154.360	0.08	-0.08	-1.24
240.00	0.110	163.020	240.00	-0.42	-0.39	0.18	1710219.08	418997.21	39°38'44.9971"N	80°31'44.7229"W	0.43	154.751	0.15	-0.12	39.60
265.00	0.080	186.820	265.00	-0.46	-0.43	0.19	1710219.09	418997.17	39°38'44.9967"N	80°31'44.7229"W	0.47	156.295	0.20	-0.12	95.20
290.00	0.080	169.760	290.00	-0.48	-0.47	0.19	1710219.09	418997.13	39°38'44.9964"N	80°31'44.7229"W	0.50	157.765	0.09	0.00	-68.24
315.00	0.060	161.390	315.00	-0.51	-0.50	0.20	1710219.10	418997.10	39°38'44.9961"N	80°31'44.7228"W	0.53	158.242	0.09	-0.08	-33.48
340.00	0.070	158.750	340.00	-0.54	-0.52	0.21	1710219.11	418997.08	39°38'44.9958"N	80°31'44.7226"W	0.56	158.329	0.04	0.04	-10.56
365.00	0.060	158.680	365.00	-0.56	-0.55	0.22	1710219.12	418997.05	39°38'44.9956"N	80°31'44.7225"W	0.59	158.348	0.04	-0.04	-0.28
390.00	0.060	125.160	390.00	-0.59	-0.57	0.23	1710219.13	418997.03	39°38'44.9954"N	80°31'44.7223"W	0.62	157.687	0.14	0.00	-134.08
415.00	0.050	167.950	415.00	-0.61	-0.59	0.25	1710219.15	418997.01	39°38'44.9952"N	80°31'44.7221"W	0.64	157.229	0.16	-0.04	171.16
440.00	0.050	141.460	440.00	-0.63	-0.61	0.26	1710219.16	418996.99	39°38'44.9950"N	80°31'44.7220"W	0.66	157.148	0.09	0.00	-105.96
465.00	0.040	146.740	465.00	-0.65	-0.62	0.27	1710219.17	418996.98	39°38'44.9948"N	80°31'44.7219"W	0.68	156.765	0.04	-0.04	21.12
490.00	0.060	134.630	490.00	-0.67	-0.64	0.28	1710219.18	418996.96	39°38'44.9947"N	80°31'44.7217"W	0.70	156.235	0.09	0.08	-48.44
515.00	0.050	131.370	515.00	-0.70	-0.66	0.30	1710219.20	418996.94	39°38'44.9945"N	80°31'44.7214"W	0.72	155.487	0.04	-0.04	-13.04
540.00	0.050	70.840	540.00	-0.71	-0.66	0.32	1710219.22	418996.94	39°38'44.9945"N	80°31'44.7212"W	0.73	154.286	0.20	0.00	-242.12
565.00	0.030	106.710	565.00	-0.72	-0.66	0.33	1710219.23	418996.94	39°38'44.9945"N	80°31'44.7210"W	0.74	153.068	0.12	-0.08	143.48
590.00	0.050	43.550	590.00	-0.73	-0.65	0.35	1710219.25	418996.95	39°38'44.9946"N	80°31'44.7208"W	0.74	151.902	0.18	0.08	-252.64
615.00	0.030	108.940	615.00	-0.73	-0.65	0.36	1710219.26	418996.95	39°38'44.9946"N	80°31'44.7206"W	0.74	150.754	0.19	-0.08	261.56
640.00	0.050	99.830	640.00	-0.74	-0.65	0.38	1710219.28	418996.95	39°38'44.9946"N	80°31'44.7204"W	0.75	149.776	0.08	0.08	-36.44
665.00	0.050	58.140	665.00	-0.75	-0.65	0.40	1710219.30	418996.95	39°38'44.9946"N	80°31'44.7202"W	0.76	148.321	0.14	0.00	-166.76
690.00	0.050	131.160	690.00	-0.76	-0.65	0.42	1710219.32	418996.95	39°38'44.9946"N	80°31'44.7200"W	0.77	147.268	0.24	0.00	292.08
715.00	0.040	60.460	715.00	-0.78	-0.65	0.43	1710219.33	418996.95	39°38'44.9946"N	80°31'44.7197"W	0.78	146.406	0.21	-0.04	-282.80
740.00	0.050	80.120	740.00	-0.78	-0.64	0.45	1710219.35	418996.96	39°38'44.9946"N	80°31'44.7195"W	0.79	145.042	0.07	0.04	78.64
765.00	0.120	168.380	765.00	-0.81	-0.67	0.47	1710219.37	418996.93	39°38'44.9944"N	80°31'44.7193"W	0.81	145.076	0.51	0.28	353.04
790.00	0.070	329.340	790.00	-0.82	-0.68	0.46	1710219.36	418996.92	39°38'44.9943"N	80°31'44.7193"W	0.82	145.719	0.75	-0.20	643.84

RECEIVED
 Office of Oil and Gas
 FEB 14 2022
 WV Department of Environmental Protection



Where energy meets innovation.

Actual Wellpath Report

Sizemore 13H AWP Proj: 22549'

Page 3 of 14



REFERENCE WELLPATH IDENTIFICATION

Operator	EQT PRODUCTION COMPANY	Well	Sizemore 13H
Field	Wetzel	API	47-103-03350-00-00
Facility	Sizemore Pad	Wellbore	Sizemore 13H AWP
Slot	Slot 13		

WELLPATH DATA (272 stations)

MD [ft]	Inclination [°]	Azimuth [°]	TVD [ft]	Vert Sect [ft]	North [ft]	East [ft]	Grid East [US ft]	Grid North [US ft]	Latitude	Longitude	Closure Dist [ft]	Closure Dir [°]	DLS [°/100ft]	Build Rate [°/100ft]	Turn Rate [°/100ft]
815.00	0.050	308.950	815.00	-0.79	-0.66	0.45	1710219.35	418996.94	39°38'44.9945"N	80°31'44.7195"W	0.80	145.876	0.12	-0.08	-81.56
840.00	0.060	213.360	840.00	-0.79	-0.66	0.43	1710219.33	418996.94	39°38'44.9944"N	80°31'44.7197"W	0.79	146.980	0.33	0.04	-382.36
865.00	0.040	89.010	865.00	-0.80	-0.67	0.43	1710219.33	418996.93	39°38'44.9943"N	80°31'44.7197"W	0.80	147.309	0.36	-0.08	-497.40
890.00	0.090	178.590	890.00	-0.82	-0.69	0.44	1710219.34	418996.91	39°38'44.9941"N	80°31'44.7196"W	0.82	147.502	0.39	0.20	358.32
915.00	0.040	17.810	915.00	-0.83	-0.71	0.45	1710219.35	418996.89	39°38'44.9940"N	80°31'44.7196"W	0.83	147.737	0.51	-0.20	-643.12
940.00	0.080	193.920	940.00	-0.83	-0.71	0.44	1710219.34	418996.89	39°38'44.9940"N	80°31'44.7196"W	0.84	148.139	0.48	0.16	704.44
965.00	0.110	301.950	965.00	-0.82	-0.72	0.42	1710219.32	418996.88	39°38'44.9939"N	80°31'44.7199"W	0.83	149.731	0.62	0.12	432.12
990.00	0.110	34.320	990.00	-0.79	-0.69	0.41	1710219.31	418996.91	39°38'44.9942"N	80°31'44.7200"W	0.80	148.979	0.63	0.00	369.48
1015.00	0.120	141.630	1015.00	-0.81	-0.69	0.44	1710219.34	418996.91	39°38'44.9942"N	80°31'44.7196"W	0.82	147.214	0.74	0.04	429.24
1040.00	0.110	152.440	1040.00	-0.86	-0.73	0.47	1710219.37	418996.87	39°38'44.9938"N	80°31'44.7193"W	0.87	147.190	0.10	-0.04	43.24
1065.00	0.070	178.640	1065.00	-0.90	-0.76	0.48	1710219.38	418996.84	39°38'44.9935"N	80°31'44.7191"W	0.90	147.835	0.23	-0.16	104.80
1090.00	0.060	61.160	1090.00	-0.91	-0.77	0.49	1710219.39	418996.83	39°38'44.9934"N	80°31'44.7189"W	0.92	147.507	0.44	-0.04	-469.92
1115.00	0.030	338.370	1115.00	-0.91	-0.76	0.50	1710219.40	418996.84	39°38'44.9935"N	80°31'44.7188"W	0.91	146.609	0.25	-0.12	-331.16
1140.00	0.070	30.810	1140.00	-0.90	-0.74	0.51	1710219.41	418996.86	39°38'44.9937"N	80°31'44.7188"W	0.90	145.647	0.23	0.16	209.76
1165.00	0.070	12.870	1165.00	-0.88	-0.71	0.52	1710219.42	418996.89	39°38'44.9940"N	80°31'44.7186"W	0.88	144.020	0.09	0.00	-71.76
1175.00	0.120	189.460	1175.00	-0.88	-0.72	0.52	1710219.42	418996.88	39°38'44.9939"N	80°31'44.7186"W	0.89	144.205	1.90	0.50	1765.90
1212.00	0.100	81.220	1212.00	-0.93	-0.75	0.54	1710219.44	418996.85	39°38'44.9936"N	80°31'44.7183"W	0.93	144.128	0.48	-0.05	-292.54
1307.00	0.240	119.610	1307.00	-1.15	-0.84	0.80	1710219.70	418996.76	39°38'44.9928"N	80°31'44.7150"W	1.16	136.362	0.18	0.15	40.41
1400.00	1.690	331.690	1399.99	0.01	0.27	0.32	1710219.22	418997.87	39°38'45.0037"N	80°31'44.7213"W	0.42	49.243	2.04	1.56	-159.05
1494.00	3.080	334.100	1493.90	3.84	3.77	-1.44	1710217.46	419001.37	39°38'45.0380"N	80°31'44.7444"W	4.03	339.035	1.48	1.48	2.56
1585.00	3.710	326.550	1584.74	9.16	8.42	-4.13	1710214.77	419006.02	39°38'45.0837"N	80°31'44.7794"W	9.38	333.856	0.85	0.69	-8.30
1680.00	4.210	321.180	1679.52	15.70	13.70	-8.01	1710210.89	419011.30	39°38'45.1355"N	80°31'44.8298"W	15.87	329.680	0.65	0.53	-5.65
1774.00	3.490	311.940	1773.30	21.98	18.30	-12.31	1710206.60	419015.90	39°38'45.1804"N	80°31'44.8853"W	22.06	326.088	1.01	-0.77	-9.83
1870.00	2.420	296.290	1869.18	26.70	21.15	-16.30	1710202.61	419018.75	39°38'45.2082"N	80°31'44.9368"W	26.70	322.392	1.39	-1.11	-16.30
1966.00	2.130	301.790	1965.10	30.22	22.99	-19.63	1710199.27	419020.59	39°38'45.2260"N	80°31'44.9796"W	30.23	319.511	0.38	-0.30	5.73
2061.00	2.230	308.550	2060.03	33.68	25.07	-22.58	1710196.33	419022.67	39°38'45.2462"N	80°31'45.0176"W	33.74	318.001	0.29	0.11	7.12
2156.00	2.460	311.560	2154.95	37.50	27.58	-25.55	1710193.36	419025.18	39°38'45.2706"N	80°31'45.0560"W	37.59	317.190	0.27	0.24	3.17
2252.00	3.140	311.180	2250.84	42.12	30.68	-29.07	1710189.83	419028.27	39°38'45.3008"N	80°31'45.1014"W	42.26	316.543	0.71	0.71	-0.40
2347.00	3.450	314.600	2345.68	47.52	34.40	-33.06	1710185.84	419031.99	39°38'45.3371"N	80°31'45.1530"W	47.71	316.134	0.39	0.33	3.60
2458.00	4.160	315.910	2456.44	54.84	39.63	-38.24	1710180.66	419037.23	39°38'45.3883"N	80°31'45.2200"W	55.07	316.025	0.64	0.64	1.18

WV Department of Environmental Protection

FEB 14 2022

Office of Oil and Gas

RECEIVED



Where energy meets innovation.

Actual Wellpath Report

Sizemore 13H AWP Proj: 22549'

Page 4 of 14



REFERENCE WELLPATH IDENTIFICATION

Operator	EQT PRODUCTION COMPANY	Well	Sizemore 13H
Field	Wetzel	API	47-103-03350-00-00
Facility	Sizemore Pad	Wellbore	Sizemore 13H AWB
Slot	Slot 13		

WELLPATH DATA (272 stations)

MD [ft]	Inclination [°]	Azimuth [°]	TVD [ft]	Vert Sect [ft]	North [ft]	East [ft]	Grid East [US ft]	Grid North [US ft]	Latitude	Longitude	Closure Dist [ft]	Closure Dir [°]	DLS [°/100ft]	Build Rate [°/100ft]	Turn Rate [°/100ft]
2539.00	4.580	315.920	2537.20	60.99	44.07	-42.53	1710176.37	419041.66	39°38'45.4316"N	80°31'45.2755"W	61.25	316.014	0.52	0.52	0.01
2630.00	5.050	317.640	2627.88	68.60	49.64	-47.76	1710171.14	419047.23	39°38'45.4861"N	80°31'45.3431"W	68.88	316.103	0.54	0.52	1.89
2722.00	5.080	317.390	2719.52	76.71	55.63	-53.25	1710165.66	419053.22	39°38'45.5446"N	80°31'45.4141"W	77.00	316.252	0.04	0.03	-0.27
2817.00	5.090	330.480	2814.15	85.06	62.39	-58.17	1710160.73	419059.98	39°38'45.6109"N	80°31'45.4781"W	85.30	317.004	1.22	0.01	13.78
2907.00	5.370	356.900	2903.79	92.43	70.07	-60.37	1710158.54	419067.66	39°38'45.6866"N	80°31'45.5073"W	92.49	319.255	2.67	0.31	29.36
3000.00	5.800	22.530	2996.36	98.23	78.76	-58.80	1710160.10	419076.35	39°38'45.7726"N	80°31'45.4885"W	98.29	323.255	2.70	0.46	27.56
3092.00	6.440	40.120	3087.84	101.46	87.00	-53.69	1710165.21	419084.59	39°38'45.8546"N	80°31'45.4244"W	102.23	328.318	2.14	0.70	19.12
3184.00	7.820	54.650	3179.14	102.09	94.56	-45.26	1710173.64	419092.16	39°38'45.9304"N	80°31'45.3178"W	104.84	334.422	2.46	1.50	15.79
3276.00	9.770	61.310	3270.05	100.36	101.93	-33.31	1710185.59	419099.53	39°38'46.0045"N	80°31'45.1661"W	107.24	341.904	2.39	2.12	7.24
3368.00	11.580	58.480	3360.46	97.85	110.51	-18.59	1710200.31	419108.10	39°38'46.0910"N	80°31'44.9792"W	112.06	350.452	2.05	1.97	-3.08
3462.00	13.710	58.600	3452.17	95.25	121.25	-1.04	1710217.86	419118.84	39°38'46.1991"N	80°31'44.7564"W	121.25	359.511	2.27	2.27	0.13
3557.00	15.940	58.910	3544.00	92.08	133.85	19.75	1710238.65	419131.44	39°38'46.3260"N	80°31'44.4925"W	135.30	8.392	2.35	2.35	0.33
3650.00	17.830	58.950	3632.99	88.48	147.79	42.88	1710261.78	419145.38	39°38'46.4663"N	80°31'44.1988"W	153.89	16.181	2.03	2.03	0.04
3744.00	19.660	56.800	3722.00	85.04	163.87	68.45	1710287.34	419161.46	39°38'46.6282"N	80°31'43.8744"W	177.59	22.669	2.08	1.95	-2.29
3837.00	21.310	58.480	3809.12	81.42	181.27	95.94	1710314.84	419178.86	39°38'46.8033"N	80°31'43.5255"W	205.10	27.891	1.88	1.77	1.81
3930.00	22.970	59.770	3895.26	76.62	199.25	126.03	1710344.92	419196.83	39°38'46.9843"N	80°31'43.1435"W	235.76	32.315	1.86	1.78	1.39
4023.00	23.620	58.880	3980.68	71.48	218.01	157.66	1710376.55	419215.60	39°38'47.1733"N	80°31'42.7420"W	269.05	35.873	0.79	0.70	-0.96
4120.00	23.490	59.320	4069.60	66.20	237.92	190.92	1710409.81	419235.50	39°38'47.3738"N	80°31'42.3197"W	305.05	38.746	0.23	-0.13	0.45
4215.00	22.560	61.040	4157.03	60.47	256.40	223.15	1710442.04	419253.99	39°38'47.5601"N	80°31'41.9104"W	339.91	41.033	1.21	-0.98	1.81
4309.00	21.920	60.920	4244.03	54.47	273.66	254.26	1710473.15	419271.25	39°38'47.7342"N	80°31'41.5153"W	373.55	42.895	0.68	-0.68	-0.13
4404.00	21.320	57.030	4332.35	49.77	291.68	284.25	1710503.13	419289.26	39°38'47.9156"N	80°31'41.1346"W	407.28	44.261	1.64	-0.63	-4.09
4496.00	21.220	57.220	4418.09	46.37	309.80	312.28	1710531.16	419307.38	39°38'48.0978"N	80°31'40.7789"W	439.88	45.229	0.13	-0.11	0.21
4591.00	22.110	59.540	4506.38	42.02	328.17	342.15	1710561.02	419325.75	39°38'48.2828"N	80°31'40.3998"W	474.09	46.194	1.30	0.94	2.44
4685.00	23.100	61.780	4593.16	36.12	345.86	373.64	1710592.52	419343.44	39°38'48.4611"N	80°31'39.9998"W	509.14	47.212	1.40	1.05	2.38
4778.00	23.230	60.960	4678.66	29.71	363.39	405.75	1710624.63	419360.96	39°38'48.6380"N	80°31'39.5919"W	544.69	48.153	0.37	0.14	-0.88
4873.00	23.220	57.950	4765.96	24.39	382.42	438.01	1710656.88	419380.00	39°38'48.8298"N	80°31'39.1824"W	581.46	48.876	1.25	-0.01	-3.17
4968.00	23.100	58.880	4853.31	19.75	401.99	469.83	1710688.71	419399.56	39°38'49.0267"N	80°31'38.7784"W	618.34	49.450	0.41	-0.13	0.98
5060.00	22.290	63.390	4938.19	13.70	419.13	500.89	1710719.76	419416.71	39°38'49.1997"N	80°31'38.3840"W	653.12	50.078	2.09	-0.88	4.90
5155.00	21.380	65.380	5026.37	5.70	434.42	532.74	1710751.61	419431.99	39°38'49.3543"N	80°31'37.9790"W	687.41	50.805	1.23	-0.96	2.09
5249.00	21.070	62.350	5114.00	-1.72	449.40	563.28	1710782.15	419446.97	39°38'49.5058"N	80°31'37.5908"W	720.59	51.417	1.21	-0.33	-3.22

RECEIVED
 Office of Oil and Gas
 WV Department of Environmental Protection
 FEB 14 2022



Actual Wellpath Report

Sizemore 13H AWP Proj: 22549'

Page 5 of 14



Where energy meets innovation.

REFERENCE WELLPATH IDENTIFICATION				
Operator	EQT PRODUCTION COMPANY		Well	Sizemore 13H
Field	Wetzel		API	47-103-03350-00-00
Facility	Sizemore Pad		Wellbore	Sizemore 13H AWP
Slot	Slot 13			

WELLPATH DATA (272 stations)

MD (ft)	Inclination (°)	Azimuth (°)	TVD (ft)	Vert Sect (ft)	North (ft)	East (ft)	Grid East (US ft)	Grid North (US ft)	Latitude	Longitude	Closure Dist (ft)	Closure Dir (°)	DLS (°/100ft)	Build Rate (°/100ft)	Turn Rate (°/100ft)
5344.00	20.500	60.260	5202.82	-7.59	465.57	592.85	1710811.72	419463.15	39°38'49.6690"N	80°31'37.2151"W	753.81	51.857	0.98	-0.60	-2.20
5436.00	20.530	57.580	5288.99	-11.88	482.21	620.46	1710839.32	419479.79	39°38'49.8366"N	80°31'36.8647"W	785.81	52.146	1.02	0.03	-2.91
5529.00	21.560	58.080	5375.78	-15.69	499.99	648.73	1710867.59	419497.56	39°38'50.0155"N	80°31'36.5059"W	819.05	52.378	1.12	1.11	0.54
5623.00	23.010	59.210	5462.76	-20.27	518.53	679.17	1710898.03	419516.10	39°38'50.2021"N	80°31'36.1195"W	854.49	52.639	1.61	1.54	1.20
5714.00	23.520	61.360	5546.36	-25.90	536.34	710.39	1710929.25	419533.91	39°38'50.3816"N	80°31'35.7230"W	890.12	52.948	1.09	0.56	2.36
5806.00	23.260	63.750	5630.80	-33.04	553.17	742.79	1710961.65	419550.74	39°38'50.5516"N	80°31'35.3113"W	926.14	53.324	1.07	-0.28	2.60
5898.00	23.800	65.450	5715.15	-41.50	568.92	775.97	1710994.82	419566.48	39°38'50.7110"N	80°31'34.8895"W	962.19	53.752	0.94	0.59	1.85
5991.00	24.750	64.250	5799.93	-50.47	585.17	810.58	1711029.43	419582.74	39°38'50.8756"N	80°31'34.4495"W	999.73	54.174	1.15	1.02	-1.29
6083.00	24.460	60.780	5883.58	-57.93	602.84	844.55	1711063.40	419600.40	39°38'51.0540"N	80°31'34.0178"W	1037.63	54.481	1.60	-0.32	-3.77
6175.00	23.240	57.120	5967.73	-62.93	621.99	876.42	1711095.26	419619.55	39°38'51.2468"N	80°31'33.6132"W	1074.70	54.637	2.08	-1.33	-3.98
6267.00	22.000	60.930	6052.65	-67.66	640.22	906.72	1711125.57	419637.78	39°38'51.4304"N	80°31'33.2285"W	1109.97	54.775	2.09	-1.35	4.14
6361.00	22.140	60.480	6139.77	-73.44	657.50	937.53	1711156.37	419655.06	39°38'51.6047"N	80°31'32.8373"W	1145.10	54.957	0.23	0.15	-0.48
6452.00	22.910	59.310	6223.82	-78.66	674.99	967.68	1711186.52	419672.55	39°38'51.7809"N	80°31'32.4544"W	1179.84	55.103	0.98	0.85	-1.29
6545.00	24.560	58.290	6308.96	-83.55	694.39	999.69	1711218.53	419691.95	39°38'51.9762"N	80°31'32.0480"W	1217.19	55.216	1.83	1.77	-1.10
6637.00	24.330	59.860	6392.71	-88.71	713.96	1032.35	1711251.18	419711.51	39°38'52.1733"N	80°31'31.6334"W	1255.18	55.333	0.75	-0.25	1.71
6731.00	25.200	61.490	6478.06	-95.15	733.23	1066.68	1711285.51	419730.79	39°38'52.3676"N	80°31'31.1974"W	1294.38	55.495	1.18	0.93	1.73
6824.00	25.730	60.270	6562.03	-101.81	752.69	1101.61	1711320.44	419750.25	39°38'52.5639"N	80°31'30.7537"W	1334.20	55.656	0.80	0.57	-1.31
6921.00	25.870	56.440	6649.37	-107.00	774.84	1137.53	1711356.36	419772.39	39°38'52.7868"N	80°31'30.2978"W	1376.35	55.739	1.72	0.14	-3.95
6982.00	26.190	52.590	6704.18	-108.51	790.37	1159.31	1711378.14	419787.92	39°38'52.9428"N	80°31'30.0216"W	1403.10	55.715	2.82	0.52	-6.31
7077.00	24.750	28.770	6790.17	-101.35	820.62	1185.60	1711404.43	419818.17	39°38'53.2447"N	80°31'29.6899"W	1441.90	55.311	10.82	-1.52	-25.07
7173.00	27.010	14.150	6876.63	-80.48	859.42	1200.62	1711419.45	419856.97	39°38'53.6298"N	80°31'29.5035"W	1476.51	54.404	7.03	2.35	-15.23
7268.00	28.340	358.810	6960.87	-49.53	902.94	1205.43	1711424.26	419900.48	39°38'54.0604"N	80°31'29.4484"W	1506.11	53.165	7.61	1.40	-16.15
7364.00	34.880	348.620	7042.64	-7.00	952.72	1199.53	1711418.36	419950.26	39°38'54.5517"N	80°31'29.5311"W	1531.85	51.542	8.78	6.81	-10.61
7459.00	42.690	339.680	7116.69	47.81	1009.68	1182.95	1711401.78	420007.22	39°38'55.1128"N	80°31'29.7513"W	1555.26	49.518	10.10	8.22	-9.41
7554.00	49.650	331.380	7182.50	114.15	1071.79	1154.37	1711373.20	420069.33	39°38'55.7233"N	80°31'30.1258"W	1575.22	47.124	9.65	7.33	-8.74
7649.00	57.970	325.880	7238.57	190.10	1137.06	1114.35	1711333.18	420134.59	39°38'56.3638"N	80°31'30.6469"W	1592.06	44.422	9.92	8.76	-5.79
7743.00	65.050	319.210	7283.42	272.58	1202.45	1064.05	1711282.89	420199.97	39°38'57.0043"N	80°31'31.2994"W	1605.64	41.506	9.77	7.53	-7.10
7839.00	72.780	316.280	7317.94	361.90	1268.64	1003.83	1711222.67	420266.17	39°38'57.6517"N	80°31'32.0789"W	1617.75	38.353	8.54	8.05	-3.05
7934.00	79.380	318.730	7340.78	453.85	1336.61	941.60	1711160.44	420334.13	39°38'58.3164"N	80°31'32.8843"W	1634.97	35.163	7.38	6.95	2.58
8029.00	84.970	319.740	7353.71	547.87	1407.87	880.18	1711099.02	420405.38	39°38'59.0136"N	80°31'33.6799"W	1660.36	32.013	5.98	5.88	1.06

RECEIVED
 Department of Environmental Protection
 Oil and Gas
 FEB 14 2022



Where energy meets innovation.

Actual Wellpath Report

Sizemore 13H AWP Proj: 22549'

Page 6 of 14



REFERENCE WELLPATH IDENTIFICATION				
Operator	EQT PRODUCTION COMPANY		Well	Sizemore 13H
Field	Wetzel		API	47-103-03350-00-00
Facility	Sizemore Pad		Wellbore	Sizemore 13H AWB
Slot	Slot 13			

WELLPATH DATA (272 stations)															
MD [ft]	Inclination [°]	Azimuth [°]	TVD [ft]	Vert Sect [ft]	North [ft]	East [ft]	Grid East [US ft]	Grid North [US ft]	Latitude	Longitude	Closure Dist [ft]	Closure Dir [°]	DLS [°/100ft]	Build Rate [°/100ft]	Turn Rate [°/100ft]
8124.00	90.710	317.940	7357.29	642.67	1479.30	817.72	1711036.57	420476.81	39°38'59.7126"N	80°31'34.4887"W	1690.27	28.933	6.33	6.04	-1.89
8219.00	90.920	316.010	7355.94	737.39	1548.74	752.91	1710971.76	420546.25	39°39'0.3915"N	80°31'35.3274"W	1722.06	25.926	2.04	0.22	-2.03
8314.00	90.550	315.750	7354.72	831.96	1616.94	686.78	1710905.64	420614.44	39°39'1.0579"N	80°31'36.1827"W	1756.74	23.013	0.48	-0.39	-0.27
8409.00	90.620	316.930	7353.75	926.60	1685.66	621.20	1710840.06	420683.16	39°39'1.7297"N	80°31'37.0311"W	1796.48	20.230	1.24	0.07	1.24
8505.00	90.620	317.610	7352.71	1022.36	1756.17	556.06	1710774.93	420753.67	39°39'2.4192"N	80°31'37.8741"W	1842.10	17.570	0.71	0.00	0.71
8600.00	90.370	316.820	7351.89	1117.12	1825.89	491.54	1710710.41	420823.38	39°39'3.1008"N	80°31'38.7091"W	1890.90	15.067	0.87	-0.26	-0.83
8695.00	90.460	316.790	7351.20	1211.83	1895.15	426.51	1710645.39	420892.63	39°39'3.7779"N	80°31'39.5505"W	1942.55	12.683	0.10	0.09	-0.03
8790.00	90.950	316.220	7350.04	1306.49	1964.06	361.13	1710580.01	420961.54	39°39'4.4515"N	80°31'40.3964"W	1996.98	10.419	0.79	0.52	-0.60
8885.00	89.630	315.690	7349.56	1401.07	2032.34	295.09	1710513.97	421029.82	39°39'5.1189"N	80°31'41.2507"W	2053.65	8.261	1.50	-1.39	-0.56
8981.00	91.600	316.800	7348.52	1496.69	2101.67	228.70	1710447.59	421099.14	39°39'5.7965"N	80°31'42.1094"W	2114.08	6.210	2.36	2.05	1.16
9076.00	89.750	315.620	7347.41	1591.31	2170.24	162.97	1710381.86	421167.71	39°39'6.4667"N	80°31'42.9598"W	2176.35	4.294	2.31	-1.95	-1.24
9172.00	89.910	314.190	7347.69	1686.71	2238.01	94.98	1710313.87	421235.47	39°39'7.1287"N	80°31'43.8389"W	2240.02	2.430	1.50	0.17	-1.49
9267.00	90.460	315.240	7347.38	1781.09	2304.85	27.47	1710246.37	421302.31	39°39'7.7816"N	80°31'44.7117"W	2305.01	0.683	1.25	0.58	1.11
9362.00	90.650	315.320	7346.46	1875.56	2372.35	-39.37	1710179.53	421369.80	39°39'8.4411"N	80°31'45.5761"W	2372.67	359.049	0.22	0.20	0.08
9457.00	90.830	316.310	7345.24	1970.12	2440.47	-105.58	1710113.33	421437.92	39°39'9.1068"N	80°31'46.4325"W	2442.75	357.523	1.06	0.19	1.04
9552.00	90.520	315.300	7344.12	2064.68	2508.57	-171.80	1710047.11	421506.02	39°39'9.7723"N	80°31'47.2890"W	2514.45	356.082	1.11	-0.33	-1.06
9647.00	90.620	314.520	7343.17	2159.09	2575.64	-239.07	1709979.84	421573.08	39°39'10.4275"N	80°31'48.1589"W	2586.71	354.697	0.83	0.11	-0.82
9742.00	90.490	314.210	7342.25	2253.39	2642.06	-306.99	1709911.93	421639.50	39°39'11.0762"N	80°31'49.0368"W	2659.84	353.372	0.35	-0.14	-0.33
9837.00	90.340	314.820	7341.56	2347.73	2708.66	-374.73	1709844.20	421706.10	39°39'11.7267"N	80°31'49.9125"W	2734.46	352.124	0.66	-0.16	0.64
9932.00	89.880	311.560	7341.38	2441.77	2773.67	-443.98	1709774.95	421771.10	39°39'12.3614"N	80°31'50.8074"W	2808.98	350.906	3.47	-0.48	-3.43
10028.00	90.550	315.150	7341.02	2536.84	2839.57	-513.77	1709705.16	421836.99	39°39'13.0046"N	80°31'51.7093"W	2885.67	349.744	3.80	0.70	3.74
10123.00	91.320	314.470	7339.47	2631.22	2906.51	-581.16	1709637.78	421903.93	39°39'13.6585"N	80°31'52.5806"W	2964.04	348.693	1.08	0.81	-0.72
10218.00	89.820	313.470	7338.53	2725.44	2972.46	-649.52	1709569.42	421969.88	39°39'14.3025"N	80°31'53.4643"W	3042.60	347.674	1.90	-1.58	-1.05
10314.00	89.750	310.730	7338.89	2820.20	3036.81	-720.75	1709498.20	422034.23	39°39'14.9304"N	80°31'54.3843"W	3121.17	346.649	2.86	-0.07	-2.85
10409.00	89.850	309.140	7339.22	2913.34	3097.79	-793.59	1709425.36	422095.21	39°39'15.5248"N	80°31'55.3244"W	3197.83	345.631	1.68	0.11	-1.67
10504.00	90.060	313.880	7339.29	3006.93	3160.74	-864.71	1709354.25	422158.14	39°39'16.1388"N	80°31'56.2429"W	3276.89	344.700	4.99	0.22	4.99
10599.00	90.030	315.550	7339.22	3101.31	3227.58	-932.21	1709286.75	422224.98	39°39'16.7916"N	80°31'57.1157"W	3359.50	343.890	1.76	-0.03	1.76
10695.00	91.200	316.740	7338.19	3196.91	3296.79	-998.72	1709220.24	422294.19	39°39'17.4681"N	80°31'57.9761"W	3444.75	343.147	1.74	1.22	1.24
10790.00	90.650	317.810	7336.65	3291.67	3366.57	-1063.16	1709155.80	422363.97	39°39'18.1504"N	80°31'58.8103"W	3530.46	342.474	1.27	-0.58	1.13
10885.00	89.540	316.330	7336.50	3386.41	3436.13	-1127.87	1709091.10	422433.52	39°39'18.8304"N	80°31'59.6477"W	3616.50	341.828	1.95	-1.17	-1.56

RECEIVED
 Office of Oil and Gas
 WV Department of Environmental Protection
 FEB 14 2022



Where energy meets innovation.

Actual Wellpath Report

Sizemore 13H AWP Proj: 22549'

Page 7 of 14



REFERENCE WELLPATH IDENTIFICATION

Operator	EQT PRODUCTION COMPANY	Well	Sizemore 13H
Field	Wetzel	API	47-103-03350-00-00
Facility	Sizemore Pad	Wellbore	Sizemore 13H AWB
Slot	Slot 13		

WELLPATH DATA (272 stations)

MD [ft]	Inclination [°]	Azimuth [°]	TVD [ft]	Vert Sect [ft]	North [ft]	East [ft]	Grid East [US ft]	Grid North [US ft]	Latitude	Longitude	Closure Dist [ft]	Closure Dir [°]	DLS [°/100ft]	Build Rate [°/100ft]	Turn Rate [°/100ft]
10980.00	89.940	315.350	7336.93	3480.98	3504.28	-1194.05	1709024.93	422501.66	39°39'19.4963"N	80°32'0.5038"W	3702.12	341.184	1.11	0.42	-1.03
11075.00	89.630	312.280	7337.28	3575.16	3570.04	-1262.59	1708956.39	422567.42	39°39'20.1385"N	80°32'1.3897"W	3786.73	340.523	3.25	-0.33	-3.23
11170.00	89.660	316.890	7337.87	3669.48	3636.71	-1330.23	1708888.75	422634.09	39°39'20.7896"N	80°32'2.2643"W	3872.36	339.909	4.85	0.03	4.85
11265.00	90.400	317.200	7337.82	3764.22	3706.24	-1394.96	1708824.02	422703.61	39°39'21.4694"N	80°32'3.1021"W	3960.07	339.375	0.84	0.78	0.33
11361.00	89.660	315.690	7337.77	3859.88	3775.81	-1461.11	1708757.88	422773.18	39°39'22.1493"N	80°32'3.9580"W	4048.65	338.845	1.75	-0.77	-1.57
11456.00	90.920	318.430	7337.29	3954.61	3845.35	-1525.82	1708693.17	422842.71	39°39'22.8292"N	80°32'4.7955"W	4137.00	338.357	3.17	1.33	2.88
11550.00	89.880	315.910	7336.64	4048.36	3914.27	-1589.72	1708629.28	422911.63	39°39'23.5031"N	80°32'5.6226"W	4224.78	337.896	2.90	-1.11	-2.68
11645.00	89.570	315.970	7337.09	4142.94	3982.54	-1655.78	1708563.22	422979.90	39°39'24.1702"N	80°32'6.4772"W	4313.03	337.424	0.33	-0.33	0.06
11740.00	89.970	316.540	7337.47	4237.58	4051.17	-1721.47	1708497.54	423048.52	39°39'24.8410"N	80°32'7.3271"W	4401.75	336.978	0.73	0.42	0.60
11835.00	90.030	316.660	7337.47	4332.26	4120.20	-1786.74	1708432.27	423117.54	39°39'25.5157"N	80°32'8.1718"W	4490.93	336.556	0.14	0.06	0.13
11930.00	89.940	317.310	7337.50	4426.99	4189.66	-1851.55	1708367.47	423187.00	39°39'26.1947"N	80°32'9.0106"W	4580.55	336.158	0.69	-0.09	0.68
12025.00	90.520	315.430	7337.12	4521.64	4258.41	-1917.09	1708301.93	423255.75	39°39'26.8667"N	80°32'9.8587"W	4670.05	335.763	2.07	0.61	-1.98
12121.00	89.910	314.880	7336.76	4617.09	4326.48	-1984.79	1708234.23	423323.81	39°39'27.5317"N	80°32'10.7342"W	4760.02	335.357	0.86	-0.64	-0.57
12311.00	90.460	314.820	7336.14	4805.89	4460.48	-2119.49	1708099.54	423457.80	39°39'28.8405"N	80°32'12.4761"W	4938.43	334.584	0.29	0.29	-0.03
12406.00	89.880	314.350	7335.86	4900.24	4527.16	-2187.15	1708031.88	423524.49	39°39'29.4918"N	80°32'13.3510"W	5027.80	334.214	0.79	-0.61	-0.49
12501.00	90.460	314.060	7335.58	4994.52	4593.40	-2255.25	1707963.79	423590.72	39°39'30.1386"N	80°32'14.2314"W	5117.17	333.850	0.68	0.61	-0.31
12596.00	91.230	315.740	7334.18	5088.91	4660.45	-2322.53	1707896.51	423657.76	39°39'30.7935"N	80°32'15.1015"W	5207.10	333.511	1.95	0.81	1.77
12692.00	90.250	314.380	7332.94	5184.34	4728.39	-2390.33	1707828.71	423725.70	39°39'31.4573"N	80°32'15.9784"W	5298.24	333.182	1.75	-1.02	-1.42
12787.00	90.490	314.220	7332.32	5278.63	4794.74	-2458.32	1707760.73	423792.05	39°39'32.1052"N	80°32'16.8574"W	5388.22	332.855	0.30	0.25	-0.17
12882.00	91.260	315.280	7330.87	5373.00	4861.61	-2525.78	1707693.27	423858.91	39°39'32.7583"N	80°32'17.7298"W	5478.58	332.546	1.38	0.81	1.12
12977.00	90.650	315.040	7329.29	5467.45	4928.96	-2592.76	1707626.30	423926.26	39°39'33.4163"N	80°32'18.5961"W	5569.30	332.254	0.69	-0.64	-0.25
13072.00	90.800	313.450	7328.09	5561.72	4995.24	-2660.81	1707558.26	423992.53	39°39'34.0635"N	80°32'19.4758"W	5659.71	331.957	1.68	0.16	-1.67
13167.00	90.950	314.960	7326.64	5655.98	5061.47	-2728.90	1707490.17	424058.76	39°39'34.7102"N	80°32'20.3562"W	5750.25	331.669	1.60	0.16	1.59
13262.00	91.170	314.890	7324.88	5750.38	5128.54	-2796.15	1707422.92	424125.83	39°39'35.3654"N	80°32'21.2259"W	5841.27	331.400	0.24	0.23	-0.07
13357.00	90.460	314.830	7323.53	5844.78	5195.55	-2863.48	1707355.59	424192.83	39°39'36.0198"N	80°32'22.0967"W	5932.39	331.139	0.75	-0.75	-0.06
13452.00	90.800	314.840	7322.48	5939.17	5262.52	-2930.84	1707288.23	424259.80	39°39'36.6740"N	80°32'22.9679"W	6023.62	330.885	0.36	0.36	0.01
13546.00	91.020	315.090	7320.99	6032.59	5328.94	-2997.34	1707221.74	424326.22	39°39'37.3228"N	80°32'23.8279"W	6114.06	330.644	0.35	0.23	0.27
13642.00	90.060	314.280	7320.09	6127.95	5396.45	-3065.59	1707153.49	424393.72	39°39'37.9821"N	80°32'24.7105"W	6206.41	330.400	1.31	-1.00	-0.84
13736.00	90.770	315.010	7319.41	6221.32	5462.50	-3132.47	1707086.62	424459.76	39°39'38.6272"N	80°32'25.5753"W	6296.93	330.168	1.08	0.76	0.78
13832.00	89.780	314.100	7318.94	6316.65	5529.85	-3200.88	1707018.22	424527.11	39°39'39.2850"N	80°32'26.4599"W	6389.43	329.936	1.40	-1.03	-0.95



Where energy meets innovation.

Actual Wellpath Report

Sizemore 13H AWP Proj: 22549'

Page 8 of 14



REFERENCE WELLPATH IDENTIFICATION

Operator	EQT PRODUCTION COMPANY	Well	Sizemore 13H
Field	Wetzel	API	47-103-03350-00-00
Facility	Sizemore Pad	Wellbore	Sizemore 13H AWB
Slot	Slot 13		

WELLPATH DATA (272 stations)

MD [ft]	Inclination [°]	Azimuth [°]	TVD [ft]	Vert Sect [ft]	North [ft]	East [ft]	Grid East [US ft]	Grid North [US ft]	Latitude	Longitude	Closure Dist [ft]	Closure Dir [°]	DLS [°/100ft]	Build Rate [°/100ft]	Turn Rate [°/100ft]
13927.00	90.250	315.030	7318.92	6411.00	5596.51	-3268.56	1706950.54	424593.77	39°39'39.9360"N	80°32'27.3351"W	6481.08	329.714	1.10	0.49	0.98
14023.00	89.910	314.750	7318.79	6506.40	5664.26	-3336.57	1706882.53	424661.52	39°39'40.5978"N	80°32'28.2147"W	6573.93	329.500	0.46	-0.35	-0.29
14118.00	89.690	314.220	7319.12	6600.73	5730.83	-3404.35	1706814.76	424728.08	39°39'41.2478"N	80°32'29.0911"W	6665.73	329.288	0.60	-0.23	-0.56
14213.00	89.230	313.880	7320.01	6694.97	5796.88	-3472.62	1706746.49	424794.13	39°39'41.8927"N	80°32'29.9739"W	6757.44	329.076	0.60	-0.48	-0.36
14308.00	89.510	315.060	7321.06	6789.30	5863.43	-3540.41	1706678.71	424860.67	39°39'42.5426"N	80°32'30.8505"W	6849.40	328.876	1.28	0.29	1.24
14403.00	89.750	314.190	7321.67	6883.65	5930.16	-3608.02	1706611.10	424927.40	39°39'43.1943"N	80°32'31.7248"W	6941.51	328.683	0.95	0.25	-0.92
14498.00	90.370	315.600	7321.57	6978.06	5997.21	-3675.32	1706543.81	424994.44	39°39'43.8492"N	80°32'32.5952"W	7033.81	328.498	1.62	0.65	1.48
14593.00	90.220	315.190	7321.08	7072.56	6064.84	-3742.03	1706477.10	425062.07	39°39'44.5100"N	80°32'33.4581"W	7126.37	328.325	0.46	-0.16	-0.43
14688.00	90.000	314.710	7320.90	7166.98	6131.96	-3809.26	1706409.87	425129.18	39°39'45.1655"N	80°32'34.3277"W	7218.82	328.151	0.56	-0.23	-0.51
14783.00	89.820	314.250	7321.05	7261.31	6198.52	-3877.04	1706342.09	425195.74	39°39'45.8156"N	80°32'35.2042"W	7311.16	327.975	0.52	-0.19	-0.48
14878.00	90.430	315.820	7320.84	7355.74	6265.74	-3944.17	1706274.97	425262.95	39°39'46.4721"N	80°32'36.0725"W	7403.78	327.810	1.77	0.64	1.65
14973.00	89.750	315.360	7320.69	7450.27	6333.60	-4010.65	1706208.49	425330.81	39°39'47.1351"N	80°32'36.9326"W	7496.65	327.657	0.86	-0.72	-0.48
15068.00	90.550	315.230	7320.44	7544.76	6401.12	-4077.48	1706141.67	425398.33	39°39'47.7947"N	80°32'37.7971"W	7589.48	327.503	0.85	0.84	-0.14
15163.00	89.880	315.850	7320.09	7639.28	6468.92	-4144.02	1706075.13	425466.13	39°39'48.4571"N	80°32'38.6579"W	7682.44	327.356	0.96	-0.71	0.65
15258.00	90.000	315.780	7320.19	7733.85	6537.05	-4210.23	1706008.93	425534.25	39°39'49.1227"N	80°32'39.5146"W	7775.54	327.216	0.15	0.13	-0.07
15353.00	89.410	315.050	7320.68	7828.35	6604.70	-4276.92	1705942.24	425601.90	39°39'49.7837"N	80°32'40.3773"W	7868.55	327.075	0.99	-0.62	-0.77
15448.00	90.220	315.710	7320.98	7922.84	6672.32	-4343.64	1705875.52	425669.51	39°39'50.4442"N	80°32'41.2405"W	7961.60	326.936	1.10	0.85	0.69
15544.00	90.180	315.530	7320.65	8018.37	6740.93	-4410.79	1705808.38	425738.12	39°39'51.1146"N	80°32'42.1092"W	8055.76	326.802	0.19	-0.04	-0.19
15639.00	90.310	316.030	7320.24	8112.93	6809.02	-4477.04	1705742.13	425806.20	39°39'51.7798"N	80°32'42.9665"W	8149.02	326.674	0.54	0.14	0.53
15734.00	89.110	314.670	7320.72	8207.42	6876.60	-4543.80	1705675.38	425873.78	39°39'52.4400"N	80°32'43.8301"W	8242.19	326.545	1.91	-1.26	-1.43
15830.00	89.630	315.130	7321.78	8302.82	6944.36	-4611.80	1705607.39	425941.53	39°39'53.1018"N	80°32'44.7096"W	8336.23	326.412	0.72	0.54	0.48
15925.00	90.800	315.090	7321.42	8397.27	7011.66	-4678.84	1705540.35	426008.83	39°39'53.7592"N	80°32'45.5769"W	8429.41	326.285	1.23	1.23	-0.04
16020.00	89.480	315.730	7321.19	8491.77	7079.31	-4745.53	1705473.66	426076.48	39°39'54.4201"N	80°32'46.4397"W	8522.72	326.165	1.54	-1.39	0.67
16116.00	90.520	315.930	7321.19	8587.33	7148.17	-4812.42	1705406.77	426145.33	39°39'55.0928"N	80°32'47.3052"W	8617.18	326.050	1.10	1.08	0.21
16211.00	90.000	314.920	7320.76	8681.83	7215.84	-4879.10	1705340.10	426213.00	39°39'55.7539"N	80°32'48.1678"W	8710.56	325.935	1.20	-0.55	-1.06
16306.00	90.370	315.570	7320.45	8776.30	7283.30	-4945.98	1705273.22	426280.45	39°39'56.4129"N	80°32'49.0331"W	8803.93	325.820	0.79	0.39	0.68
16401.00	90.090	315.260	7320.07	8870.81	7350.96	-5012.67	1705206.54	426348.11	39°39'57.0738"N	80°32'49.8958"W	8897.38	325.710	0.44	-0.29	-0.33
16496.00	89.820	316.090	7320.14	8965.35	7418.92	-5079.05	1705140.16	426416.07	39°39'57.7378"N	80°32'50.7547"W	8990.94	325.604	0.92	-0.28	0.87
16591.00	89.450	314.540	7320.75	9059.83	7486.46	-5145.85	1705073.37	426483.60	39°39'58.3976"N	80°32'51.6189"W	9084.43	325.497	1.68	-0.39	-1.63
16686.00	90.490	315.220	7320.80	9154.24	7553.49	-5213.16	1705006.06	426550.63	39°39'59.0522"N	80°32'52.4896"W	9177.82	325.388	1.31	1.09	0.72



Where energy meets innovation.

Actual Wellpath Report

Sizemore 13H AWP Proj: 22549'

Page 9 of 14



REFERENCE WELLPATH IDENTIFICATION

Operator	EQT PRODUCTION COMPANY	Well	Sizemore 13H
Field	Wetzel	API	47-103-03350-00-00
Facility	Sizemore Pad	Wellbore	Sizemore 13H AWB
Slot	Slot 13		

WELLPATH DATA (272 stations)

MD (ft)	Inclination (°)	Azimuth (°)	TVD (ft)	Vert Sect (ft)	North (ft)	East (ft)	Grid East (US ft)	Grid North (US ft)	Latitude	Longitude	Closure Dist (ft)	Closure Dir (°)	DLS (°/100ft)	Build Rate (°/100ft)	Turn Rate (°/100ft)
16781.00	89.260	314.870	7321.01	9248.67	7620.72	-5280.28	1704938.94	426617.85	39°39'59.7089"N	80°32'53.3579"W	9271.29	325.282	1.35	-1.29	-0.37
16876.00	89.750	315.080	7321.83	9343.09	7687.86	-5347.48	1704871.74	426684.99	39°40'0.3646"N	80°32'54.2272"W	9364.76	325.178	0.56	0.52	0.22
16971.00	88.890	312.460	7322.96	9437.26	7753.57	-5416.07	1704803.16	426750.69	39°40'1.0061"N	80°32'55.1140"W	9457.89	325.065	2.90	-0.91	-2.76
17067.00	89.630	315.300	7324.20	9532.45	7820.10	-5485.26	1704733.98	426817.22	39°40'1.6556"N	80°32'56.0085"W	9552.07	324.953	3.06	0.77	2.96
17162.00	89.420	314.990	7324.98	9626.90	7887.44	-5552.26	1704666.98	426884.56	39°40'2.3133"N	80°32'56.8753"W	9645.69	324.857	0.39	-0.22	-0.33
17257.00	89.320	312.840	7326.03	9721.10	7953.32	-5620.69	1704598.56	426950.44	39°40'2.9565"N	80°32'57.7601"W	9738.97	324.751	2.27	-0.11	-2.26
17353.00	89.480	315.830	7327.03	9816.38	8020.40	-5689.34	1704529.91	427017.51	39°40'3.6115"N	80°32'58.6480"W	9833.38	324.650	3.12	0.17	3.11
17448.00	88.710	313.640	7328.53	9910.75	8087.25	-5756.81	1704462.44	427084.36	39°40'4.2644"N	80°32'59.5207"W	9926.96	324.555	2.44	-0.81	-2.31
17543.00	90.250	314.490	7329.40	10004.99	8153.32	-5825.07	1704394.19	427150.42	39°40'4.9093"N	80°33'0.4034"W	10020.38	324.456	1.85	1.62	0.89
17638.00	89.570	314.890	7329.55	10099.36	8220.13	-5892.61	1704326.65	427217.23	39°40'5.5618"N	80°33'1.2769"W	10114.02	324.365	0.83	-0.72	0.42
17734.00	89.380	313.550	7330.42	10194.62	8287.08	-5961.40	1704257.86	427284.17	39°40'6.2154"N	80°33'2.1666"W	10208.52	324.270	1.41	-0.20	-1.40
17828.00	89.940	313.710	7330.98	10287.79	8351.93	-6029.44	1704189.83	427349.02	39°40'6.8485"N	80°33'3.0463"W	10300.92	324.174	0.62	0.60	0.17
17923.00	90.060	314.370	7330.98	10382.03	8417.97	-6097.73	1704121.54	427415.06	39°40'7.4933"N	80°33'3.9294"W	10394.45	324.082	0.71	0.13	0.69
18019.00	89.260	314.070	7331.55	10477.30	8484.92	-6166.53	1704052.75	427482.00	39°40'8.1469"N	80°33'4.8191"W	10489.04	323.992	0.89	-0.83	-0.31
18114.00	89.380	314.150	7332.68	10571.55	8551.04	-6234.73	1703984.55	427548.12	39°40'8.7925"N	80°33'5.7012"W	10582.64	323.903	0.15	0.13	0.08
18209.00	88.980	313.680	7334.04	10665.75	8616.93	-6303.16	1703916.12	427614.00	39°40'9.4356"N	80°33'6.5860"W	10676.20	323.815	0.65	-0.42	-0.49
18304.00	89.480	315.250	7335.32	10760.07	8683.46	-6370.95	1703848.34	427680.53	39°40'10.0853"N	80°33'7.4628"W	10769.94	323.733	1.73	0.53	1.65
18399.00	89.200	313.880	7336.41	10854.41	8750.12	-6438.63	1703780.66	427747.19	39°40'10.7362"N	80°33'8.3382"W	10863.73	323.653	1.47	-0.29	-1.44
18494.00	89.350	313.980	7337.61	10948.62	8816.02	-6507.04	1703712.26	427813.09	39°40'11.3796"N	80°33'9.2228"W	10957.37	323.569	0.19	0.16	0.11
18590.00	88.520	314.030	7339.40	11043.83	8882.71	-6576.08	1703643.22	427879.76	39°40'12.0306"N	80°33'10.1156"W	11052.03	323.487	0.87	-0.86	0.05
18685.00	89.350	315.460	7341.16	11138.19	8949.57	-6643.54	1703575.77	427946.62	39°40'12.6835"N	80°33'10.9883"W	11145.91	323.412	1.74	0.87	1.51
18780.00	88.550	313.760	7342.90	11232.53	9016.27	-6711.16	1703508.16	428013.32	39°40'13.3349"N	80°33'11.8629"W	11239.78	323.338	1.98	-0.84	-1.79
18875.00	90.860	315.660	7343.39	11326.90	9083.10	-6778.66	1703440.65	428080.14	39°40'13.9874"N	80°33'12.7361"W	11333.71	323.266	3.15	2.43	2.00
18971.00	90.280	313.610	7342.44	11422.24	9150.54	-6846.97	1703372.35	428147.58	39°40'14.6460"N	80°33'13.6197"W	11428.62	323.194	2.22	-0.60	-2.14
19066.00	90.800	316.170	7341.54	11516.64	9217.57	-6914.26	1703305.06	428214.61	39°40'15.3007"N	80°33'14.4902"W	11522.62	323.126	2.75	0.55	2.69
19161.00	89.910	316.100	7340.95	11611.25	9286.06	-6980.09	1703239.24	428283.10	39°40'15.9699"N	80°33'15.3423"W	11616.91	323.069	0.94	-0.94	-0.67
19256.00	89.940	315.070	7341.08	11705.78	9353.92	-7046.58	1703172.75	428350.95	39°40'16.6328"N	80°33'16.2026"W	11711.11	323.008	1.08	0.03	-1.08
19351.00	89.940	315.220	7341.18	11800.24	9421.27	-7113.58	1703105.75	428418.29	39°40'17.2905"N	80°33'17.0696"W	11805.22	322.945	0.16	0.00	0.16
19446.00	90.120	315.520	7341.13	11894.73	9488.87	-7180.32	1703039.02	428485.89	39°40'17.9509"N	80°33'17.9331"W	11899.40	322.885	0.37	0.19	0.32
19541.00	90.280	315.790	7340.80	11989.27	9556.81	-7246.72	1702972.62	428553.83	39°40'18.6146"N	80°33'18.7924"W	11993.65	322.828	0.33	0.17	0.28



Where energy meets innovation.

Actual Wellpath Report

Sizemore 13H AWP Proj: 22549'

Page 10 of 14



REFERENCE WELLPATH IDENTIFICATION

Operator	EQT PRODUCTION COMPANY	Well	Sizemore 13H
Field	Wetzel	API	47-103-03350-00-00
Facility	Sizemore Pad	Wellbore	Sizemore 13H AWB
Slot	Slot 13		

WELLPATH DATA (272 stations)

MD [ft]	Inclination [°]	Azimuth [°]	TVD [ft]	Vert Sect [ft]	North [ft]	East [ft]	Grid East [US ft]	Grid North [US ft]	Latitude	Longitude	Closure Dist [ft]	Closure Dir [°]	DLS [°/100ft]	Build Rate [°/100ft]	Turn Rate [°/100ft]
19637.00	89.540	314.260	7340.95	12084.70	9624.72	-7314.57	1702904.77	428621.73	39°40'19.2778"N	80°33'19.6703"W	12088.77	322.766	1.77	-0.77	-1.59
19731.00	89.350	314.490	7341.86	12178.01	9690.46	-7381.76	1702837.59	428687.46	39°40'19.9196"N	80°33'20.5393"W	12181.76	322.701	0.32	-0.20	0.24
19827.00	89.690	314.750	7342.66	12273.36	9757.88	-7450.09	1702769.27	428754.89	39°40'20.5781"N	80°33'21.4232"W	12276.81	322.638	0.45	0.35	0.27
19922.00	89.910	315.590	7342.99	12367.82	9825.26	-7517.06	1702702.30	428822.26	39°40'21.2361"N	80°33'22.2897"W	12371.01	322.581	0.91	0.23	0.88
20017.00	89.720	315.630	7343.30	12462.36	9893.14	-7583.52	1702635.85	428890.14	39°40'21.8992"N	80°33'23.1498"W	12465.31	322.528	0.20	-0.20	0.04
20112.00	89.660	315.300	7343.81	12556.87	9960.86	-7650.15	1702569.22	428957.85	39°40'22.5607"N	80°33'24.0119"W	12559.60	322.475	0.35	-0.06	-0.35
20207.00	90.340	315.660	7343.81	12651.38	10028.60	-7716.75	1702502.62	429025.58	39°40'23.2223"N	80°33'24.8739"W	12653.89	322.423	0.81	0.72	0.38
20302.00	90.180	315.500	7343.38	12745.91	10096.45	-7783.25	1702436.13	429093.43	39°40'23.8851"N	80°33'25.7344"W	12748.22	322.372	0.24	-0.17	-0.17
20398.00	89.420	315.050	7343.72	12841.38	10164.65	-7850.80	1702368.58	429161.63	39°40'24.5513"N	80°33'26.6085"W	12843.49	322.319	0.92	-0.79	-0.47
20493.00	90.030	316.090	7344.17	12935.91	10232.49	-7917.30	1702302.08	429229.47	39°40'25.2140"N	80°33'27.4691"W	12937.83	322.269	1.27	0.64	1.09
20588.00	89.720	315.250	7344.38	13030.45	10300.45	-7983.69	1702235.70	429297.42	39°40'25.8778"N	80°33'28.3283"W	13032.21	322.221	0.94	-0.33	-0.88
20682.00	89.690	315.090	7344.87	13123.91	10367.11	-8049.96	1702169.44	429364.08	39°40'26.5289"N	80°33'29.1857"W	13125.50	322.171	0.17	-0.03	-0.17
20778.00	90.180	315.290	7344.97	13219.37	10435.22	-8117.61	1702101.78	429432.18	39°40'27.1941"N	80°33'30.0612"W	13220.79	322.120	0.55	0.51	0.21
20873.00	89.820	315.880	7344.97	13313.90	10503.07	-8184.10	1702035.30	429500.03	39°40'27.8569"N	80°33'30.9216"W	13315.18	322.074	0.73	-0.38	0.62
20968.00	89.450	314.910	7345.58	13408.40	10570.71	-8250.81	1701968.60	429567.66	39°40'28.5175"N	80°33'31.7849"W	13409.54	322.027	1.09	-0.39	-1.02
21063.00	89.660	315.930	7346.32	13502.90	10638.37	-8317.48	1701901.93	429635.32	39°40'29.1784"N	80°33'32.6477"W	13503.91	321.980	1.10	0.22	1.07
21158.00	89.850	315.550	7346.72	13597.45	10706.41	-8383.78	1701835.63	429703.35	39°40'29.8431"N	80°33'33.5059"W	13598.35	321.937	0.45	0.20	-0.40
21254.00	89.850	314.700	7346.97	13692.90	10774.44	-8451.52	1701767.90	429771.38	39°40'30.5075"N	80°33'34.3823"W	13693.67	321.889	0.89	0.00	-0.89
21349.00	89.940	315.640	7347.15	13787.36	10841.81	-8518.49	1701700.93	429838.75	39°40'31.1655"N	80°33'35.2489"W	13788.02	321.843	0.99	0.09	0.99
21444.00	89.660	315.520	7347.48	13881.89	10909.66	-8584.98	1701634.44	429906.59	39°40'31.8283"N	80°33'36.1094"W	13882.46	321.800	0.32	-0.29	-0.13
21539.00	90.340	314.930	7347.48	13976.36	10977.10	-8651.89	1701567.54	429974.03	39°40'32.4869"N	80°33'36.9753"W	13976.84	321.756	0.95	0.72	-0.62
21635.00	90.090	316.260	7347.12	14071.88	11045.68	-8719.07	1701500.37	430042.61	39°40'33.1568"N	80°33'37.8446"W	14072.28	321.714	1.41	-0.26	1.39
21730.00	89.540	315.580	7347.43	14166.46	11113.93	-8785.15	1701434.29	430110.84	39°40'33.8235"N	80°33'38.7001"W	14166.80	321.675	0.92	-0.58	-0.72
21825.00	91.080	315.050	7346.91	14260.95	11181.47	-8851.95	1701367.49	430178.38	39°40'34.4832"N	80°33'39.5645"W	14261.22	321.633	1.71	1.62	-0.56
21920.00	91.230	314.920	7345.00	14355.35	11248.61	-8919.13	1701300.31	430245.52	39°40'35.1389"N	80°33'40.4338"W	14355.56	321.589	0.21	0.16	-0.14
22015.00	90.120	314.700	7343.88	14449.74	11315.56	-8986.52	1701232.92	430312.46	39°40'35.7926"N	80°33'41.3057"W	14449.89	321.544	1.19	-1.17	-0.23
22110.00	89.420	312.350	7344.26	14543.86	11380.97	-9055.40	1701164.05	430377.88	39°40'36.4310"N	80°33'42.1964"W	14543.96	321.492	2.58	-0.74	-2.47
22205.00	90.000	314.360	7344.74	14637.95	11446.19	-9124.47	1701094.99	430443.09	39°40'37.0674"N	80°33'43.0896"W	14638.01	321.439	2.20	0.61	2.12
22301.00	90.650	314.910	7344.20	14733.30	11513.64	-9192.78	1701026.68	430510.53	39°40'37.7260"N	80°33'43.9734"W	14733.33	321.395	0.89	0.68	0.57
22396.00	89.820	314.770	7343.81	14827.70	11580.62	-9260.15	1700959.32	430577.51	39°40'38.3801"N	80°33'44.8449"W	14827.71	321.353	0.89	-0.87	-0.15



Where energy meets innovation.

Actual Wellpath Report

Sizemore 13H AWP Proj: 22549'

Page 11 of 14



REFERENCE WELLPATH IDENTIFICATION

Operator	EQT PRODUCTION COMPANY	Well	Sizemore 13H
Field	Wetzel	API	47-103-03350-00-00
Facility	Sizemore Pad	Wellbore	Sizemore 13H AWB
Slot	Slot 13		

WELLPATH DATA (272 stations) † = interpolated, ‡ = extrapolated station

MD [ft]	Inclination [°]	Azimuth [°]	TVD [ft]	Vert Sect [ft]	North [ft]	East [ft]	Grid East [US ft]	Grid North [US ft]	Latitude	Longitude	Closure Dist [ft]	Closure Dir [°]	DLS [°/100ft]	Build Rate [°/100ft]	Turn Rate [°/100ft]
22491.00	89.910	313.660	7344.03	14921.98	11646.87	-9328.23	1700891.24	430643.76	39°40'39.0268"N	80°33'45.7257"W	14921.98	321.308	1.17	0.09	-1.17
22549.00‡	89.910	313.660	7344.12	14979.47	11686.91	-9370.19	1700849.28	430683.80	39°40'39.4176"N	80°33'46.2684"W	14979.47	321.278	0.00	0.00	0.00

HOLE & CASING SECTIONS - Ref Wellbore: Sizemore 13H AWB Ref Wellpath: Sizemore 13H AWP Proj: 22549'

String/Diameter	Start MD [ft]	End MD [ft]	Interval [ft]	Start TVD [ft]	End TVD [ft]	Start N/S [ft]	Start E/W [ft]	End N/S [ft]	End E/W [ft]
17.5in Open Hole	28.00	1175.00	1147.00	28.00	1175.00	0.00	0.00	-0.72	0.52
13.375in Casing Surface	28.00	1175.00	1147.00	28.00	1175.00	0.00	0.00	-0.72	0.52
12.25in Open Hole	1175.00	2505.00	1330.00	1175.00	2503.30	-0.72	0.52	42.15	-40.68
9.625in Casing Intermediate	28.00	2505.00	2477.00	28.00	2503.30	0.00	0.00	42.15	-40.68
8.75in Open Hole	2505.00	7000.00	4495.00	2503.30	6720.37	42.15	-40.68	795.37	1165.37
8.5in Open Hole	7000.00	22549.00	15549.00	6720.37	7344.12	795.37	1165.37	11686.91	-9370.19
5.5in Casing Production	28.00	22549.00	22521.00	28.00	7344.12	0.00	0.00	11686.91	-9370.19



Where energy meets innovation.

Actual Wellpath Report

Sizemore 13H AWP Proj: 22549'

Page 12 of 14



REFERENCE WELLPATH IDENTIFICATION

Operator	EQT PRODUCTION COMPANY	Well	Sizemore 13H
Field	Wetzel	API	47-103-03350-00-00
Facility	Sizemore Pad	Wellbore	Sizemore 13H AWB
Slot	Slot 13		

TARGETS

Name	TVD [ft]	North [ft]	East [ft]	Grid East [US ft]	Grid North [US ft]	Latitude	Longitude	Shape
Sizemore 13H BHL Rev-1	7269.00	11686.83	-9371.24	1700848.23	430683.71	39°40'39.4167"N	80°33'46.2818"W	point
Sizemore 13H LP Rev-1	7346.00	1421.85	893.75	1711112.60	420419.36	39°38'59.1533"N	80°31'33.5084"W	point
Sizemore Hardline #1 (3.8.21)	8000.00	4195.12	-9808.00	1700411.50	423192.47	39°39'25.3297"N	80°33'50.7324"W	polygon
2D Polygon: dimensions not calculated								
Sizemore Hardline #2 (3.8.21)	8000.00	162.29	-1365.10	1708853.89	419159.88	39°38'46.4499"N	80°32'2.1988"W	polygon
2D Polygon: dimensions not calculated								
Sizemore Hardline #3 (3.8.21)	8000.00	173.05	-407.92	1709811.01	419170.64	39°38'46.6649"N	80°31'49.9650"W	polygon
2D Polygon: dimensions not calculated								
Sizemore Hardline #4 (3.8.21)	8000.00	5021.38	-5123.11	1705096.10	424018.68	39°39'34.0393"N	80°32'50.9607"W	polygon
2D Polygon: dimensions not calculated								
Sizemore Hardline #5 (3.8.21)	8000.00	2719.36	2802.61	1713021.34	421716.79	39°39'12.1907"N	80°31'9.2949"W	polygon
2D Polygon: dimensions not calculated								
Sizemore Hardline #6 (3.8.21)	8000.00	6777.83	-4794.20	1705425.00	425775.02	39°39'51.4351"N	80°32'47.0170"W	polygon
2D Polygon: dimensions not calculated								



Where energy meets innovation.

Actual Wellpath Report

Sizemore 13H AWP Proj: 22549'

Page 13 of 14



REFERENCE WELLPATH IDENTIFICATION			
Operator	EQT PRODUCTION COMPANY	Well	Sizemore 13H
Field	Wetzel	API	47-103-03350-00-00
Facility	Sizemore Pad	Wellbore	Sizemore 13H AWB
Slot	Slot 13		

WELLPATH COMPOSITION - Ref Wellbore: Sizemore 13H AWB Ref Wellpath: Sizemore 13H AWP Proj: 22549'					
Start MD [ft]	End MD [ft]	Positional Uncertainty Model	Log Name/Comment	Wellbore	Survey Date
28.00	1175.00	Gyrodata 2015 - CT+WIR+ALC	01_Gyrodata Cont Gyro <17-1/2">(115'-1175')	Sizemore 13H AWB	1/22/2021
1175.00	6921.00	OWSG MWD rev2 - Standard	02_SD1 MWD <8-3/4">(1175')(1212'-6921')	Sizemore 13H AWB	1/22/2021
6921.00	22549.00	OWSG MWD rev2 + IFR1 + Multi-Station Correction	03_BH AT Curve + MagVAR MSA <8-1/2">(6921')(6982'-22491')	Sizemore 13H AWB	3/9/2021



Where energy meets innovation.

Actual Wellpath Report

Sizemore 13H AWP Proj: 22549'

Page 14 of 14



REFERENCE WELLPATH IDENTIFICATION			
Operator	EQT PRODUCTION COMPANY	Well	Sizemore 13H
Field	Wetzel	API	47-103-03350-00-00
Facility	Sizemore Pad	Wellbore	Sizemore 13H AWB
Slot	Slot 13		

COMMENTS

Wellpath general comments

API: 47-103-03350-0000

BH Job #: 110761354

Rig: Patterson 292

Duration: 3/10/21 - 3/13/21

Gyrodata Cont Gyro <17-1/2">(115'-1175')

SDI MWD <8-3/4">(1175')(1212'-6921')

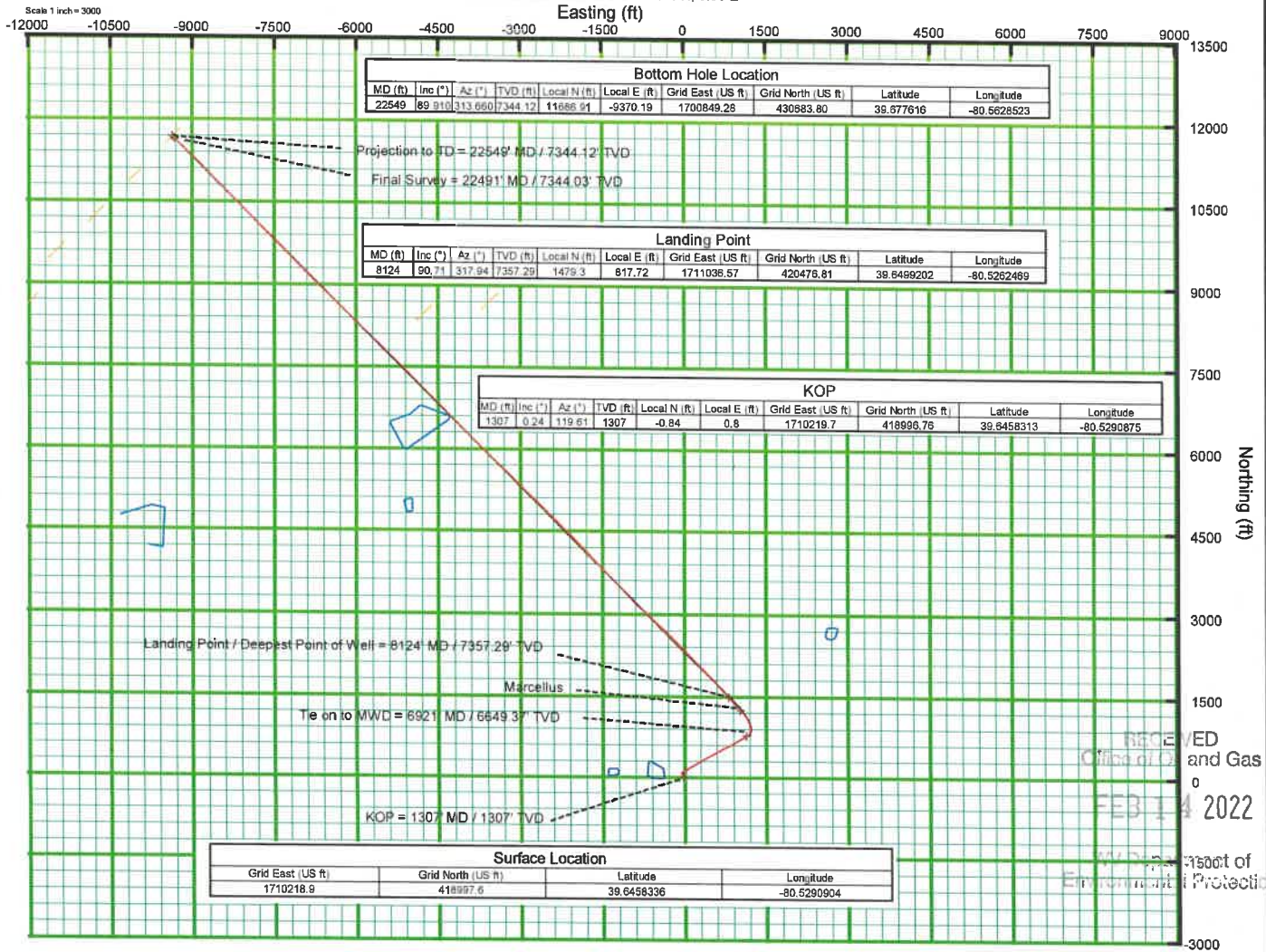
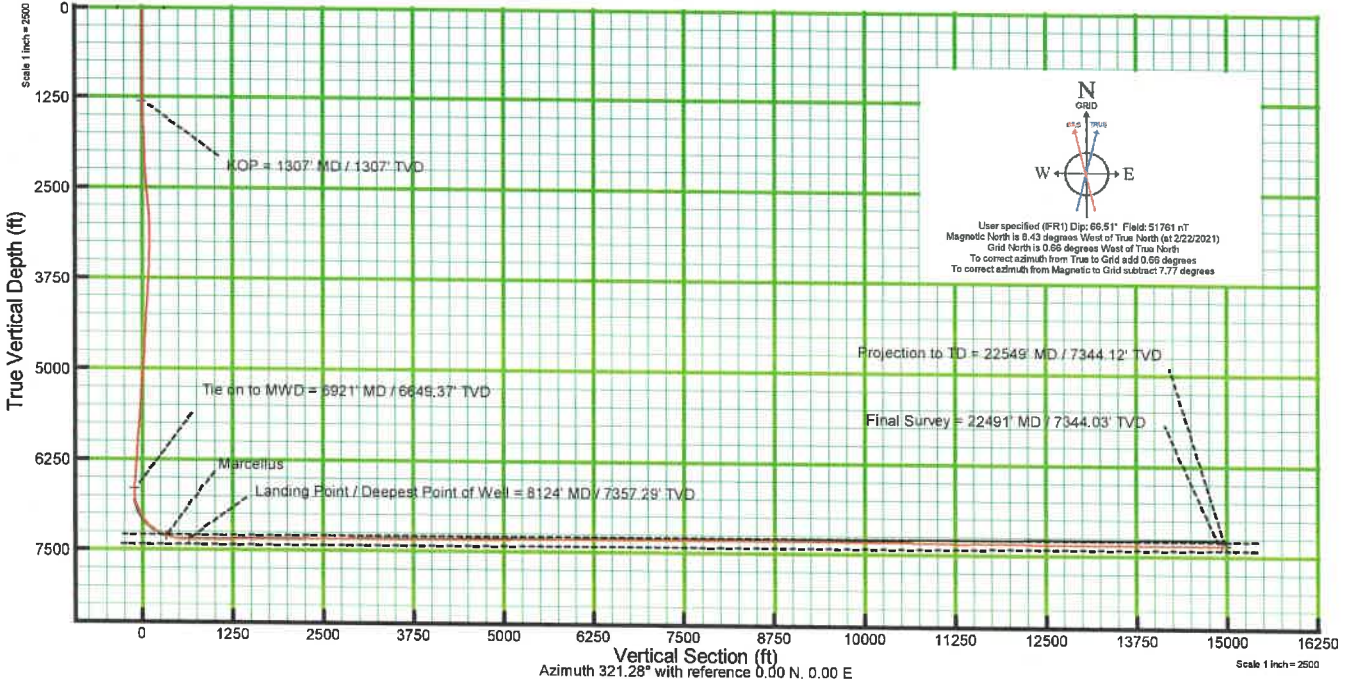
BH AT Curve + MagVAR MSA <8-1/2">(6921')(6982'-22491')

Projected MD at TD: 22549'



Where energy meets innovation.

KB elevation = 1176 ft
 Ground elevation = 1148 ft
 All measurements taken from KB elevation



09/09/2022