



# Actual Wellpath Report

Prine 3H (L-007058) AWP Proj: 22300'  
Page 1 of 13



## REFERENCE WELLPATH IDENTIFICATION

Operator	EQT PRODUCTION COMPANY	Well	Prine 3H (L-007058)
Field	Wetzel	API	47-103-03355-00-00
Facility	Prine Pad	Wellbore	Prine 3H (L-007058) AWB
Slot	Slot 03		

## REPORT SETUP INFORMATION

Projection System	NAD27 / Lambert West Virginia SP, Northern Zone (4701), US feet	Software System	WellArchitect® 6.0
North Reference	Grid	User	Hilpthop
Scale	0.999941	Report Generated	4/14/2021 at 11:41:19 AM
Convergence at slot	0.68° West	Database	WA_MPL_EASTERNUS_Defn

## WELLPATH LOCATION

	Local coordinates		Grid coordinates		Geographic coordinates	
	North[ft]	East[ft]	Easting[US ft]	Northing[US ft]	Latitude	Longitude
Slot Location	-32.51	50.43	1697758.02	427845.30	39°40'11.0016"N	80°34'25.3693"W
Facility Reference Pt			1697707.59	427877.81	39°40'11.3169"N	80°34'26.0191"W
Field Reference Pt			1688243.35	385255.46	39°33'8.9436"N	80°36'20.3370"W

## WELLPATH DATUM

Calculation method	Minimum curvature	Patterson 292 (RKB) to Facility Vertical Datum	1364.00ft
Horizontal Reference Pt	Slot	Patterson 292 (RKB) to Mean Sea Level	1364.00ft
Vertical Reference Pt	Patterson 292 (RKB)	Patterson 292 (RKB) to Ground Level at Slot (Slot 03)	28.00ft
MD Reference Pt	Patterson 292 (RKB)	Section Origin	N 0.00, E 0.00 ft
Field Vertical Reference	Mean Sea Level	Section Azimuth	310.31°



Where energy meets innovation.

# Actual Wellpath Report

Prine 3H (L-007058) AWP Proj: 22300'

Page 2 of 13



## REFERENCE WELLPATH IDENTIFICATION

Operator	EQT PRODUCTION COMPANY	Well	Prine 3H (L-007058)
Field	Wetzel	API	47-103-03355-00-00
Facility	Prine Pad	Wellbore	Prine 3H (L-007058) AWB
Slot	Slot 03		

## WELLPATH DATA (271 stations) † = interpolated, ‡ = extrapolated station

MD [ft]	Inclination [°]	Azimuth [°]	TVD [ft]	Vert Sect [ft]	North [ft]	East [ft]	Grid East [US ft]	Grid North [US ft]	Latitude	Longitude	Closure Dist [ft]	Closure Dir [°]	DLS [°/100ft]	Build Rate [°/100ft]	Turn Rate [°/100ft]
0.00†	0.000	136.780	0.00	0.00	0.00	0.00	1697758.02	427845.30	39°40'11.0016"N	80°34'25.3693"W	0.00	0.000	0.00	0.00	0.00
28.00	0.000	136.780	28.00	0.00	0.00	0.00	1697758.02	427845.30	39°40'11.0016"N	80°34'25.3693"W	0.00	0.000	0.00	0.00	0.00
115.00	0.120	136.780	115.00	-0.09	-0.07	0.06	1697758.08	427845.23	39°40'11.0009"N	80°34'25.3685"W	0.09	136.780	0.14	0.14	0.00
165.00	0.150	149.170	165.00	-0.20	-0.16	0.13	1697758.15	427845.14	39°40'11.0000"N	80°34'25.3676"W	0.21	140.654	0.08	0.06	24.78
215.00	0.150	154.550	215.00	-0.33	-0.28	0.19	1697758.21	427845.02	39°40'10.9989"N	80°34'25.3668"W	0.34	144.977	0.03	0.00	10.76
265.00	0.160	156.470	265.00	-0.45	-0.40	0.25	1697758.27	427844.90	39°40'10.9976"N	80°34'25.3660"W	0.47	147.997	0.02	0.02	3.84
315.00	0.270	153.180	315.00	-0.62	-0.57	0.33	1697758.35	427844.73	39°40'10.9960"N	80°34'25.3650"W	0.66	149.821	0.22	0.22	-6.58
365.00	0.200	142.860	365.00	-0.81	-0.74	0.44	1697758.46	427844.56	39°40'10.9943"N	80°34'25.3636"W	0.86	149.577	0.16	-0.14	-20.64
415.00	0.230	134.200	415.00	-1.00	-0.88	0.56	1697758.58	427844.42	39°40'10.9929"N	80°34'25.3620"W	1.05	147.559	0.09	0.06	-17.32
465.00	0.200	162.430	465.00	-1.17	-1.04	0.66	1697758.68	427844.26	39°40'10.9914"N	80°34'25.3607"W	1.23	147.522	0.22	-0.06	56.46
515.00	0.430	148.590	515.00	-1.42	-1.28	0.78	1697758.80	427844.02	39°40'10.9890"N	80°34'25.3591"W	1.50	148.513	0.48	0.46	-27.68
565.00	0.530	146.180	565.00	-1.83	-1.63	1.01	1697759.03	427843.67	39°40'10.9856"N	80°34'25.3561"W	1.92	148.240	0.20	0.20	-4.82
615.00	0.380	167.220	614.99	-2.18	-1.99	1.18	1697759.20	427843.32	39°40'10.9821"N	80°34'25.3540"W	2.31	149.373	0.44	-0.30	42.08
630.00	0.320	168.100	629.99	-2.25	-2.07	1.19	1697759.21	427843.23	39°40'10.9812"N	80°34'25.3537"W	2.39	150.059	0.40	-0.40	5.87
660.00	1.000	159.490	659.99	-2.55	-2.40	1.30	1697759.32	427842.90	39°40'10.9780"N	80°34'25.3522"W	2.73	151.503	2.28	2.27	-28.70
703.00	1.880	151.580	702.98	-3.53	-3.37	1.77	1697759.79	427841.93	39°40'10.9684"N	80°34'25.3461"W	3.81	152.301	2.09	2.05	-18.40
746.00	2.300	153.990	745.95	-4.98	-4.77	2.49	1697760.50	427840.53	39°40'10.9547"N	80°34'25.3368"W	5.38	152.478	1.00	0.98	5.60
789.00	3.130	159.190	788.90	-6.80	-6.64	3.28	1697761.30	427838.66	39°40'10.9363"N	80°34'25.3263"W	7.41	153.715	2.01	1.93	12.09
833.00	3.700	159.010	832.82	-9.10	-9.09	4.22	1697762.24	427836.21	39°40'10.9122"N	80°34'25.3140"W	10.02	155.120	1.30	1.30	-0.41
876.00	4.550	158.920	875.71	-11.81	-11.98	5.33	1697763.35	427833.32	39°40'10.8838"N	80°34'25.2993"W	13.11	156.025	1.98	1.98	-0.21
919.00	5.010	151.890	918.56	-15.05	-15.23	6.82	1697764.84	427830.08	39°40'10.8519"N	80°34'25.2797"W	16.68	155.856	1.73	1.07	-16.35
962.00	5.510	153.460	961.38	-18.70	-18.73	8.63	1697766.65	427826.57	39°40'10.8175"N	80°34'25.2561"W	20.62	155.255	1.21	1.16	3.65
1005.00	5.040	149.640	1004.20	-22.38	-22.20	10.51	1697768.53	427823.10	39°40'10.7834"N	80°34'25.2315"W	24.57	154.674	1.36	-1.09	-8.88
1048.00	4.440	145.930	1047.05	-25.76	-25.21	12.40	1697770.42	427820.09	39°40'10.7539"N	80°34'25.2069"W	28.10	153.820	1.57	-1.40	-8.63
1091.00	3.830	145.490	1089.94	-28.75	-27.78	14.14	1697772.16	427817.53	39°40'10.7287"N	80°34'25.1842"W	31.17	153.017	1.42	-1.42	-1.02
1134.00	3.300	161.060	1132.86	-31.20	-30.13	15.36	1697773.38	427815.17	39°40'10.7056"N	80°34'25.1683"W	33.82	152.992	2.56	-1.23	36.21
1178.00	3.230	166.420	1176.78	-33.29	-32.53	16.06	1697774.08	427812.77	39°40'10.6820"N	80°34'25.1590"W	36.28	153.727	0.71	-0.16	12.18
1221.00	3.460	173.700	1219.71	-35.21	-35.00	16.49	1697774.51	427810.30	39°40'10.6576"N	80°34'25.1531"W	38.69	154.778	1.12	0.53	16.93
1267.00	3.610	182.060	1265.62	-37.12	-37.83	16.59	1697774.61	427807.48	39°40'10.6297"N	80°34'25.1514"W	41.30	156.323	1.17	0.33	18.17
1351.00	5.040	190.740	1349.38	-40.58	-44.09	15.80	1697773.82	427801.21	39°40'10.5677"N	80°34'25.1605"W	46.84	160.282	1.87	1.70	10.33





# Actual Wellpath Report

Prine 3H (L-007058) AWP Proj: 22300'  
Page 3 of 13



## REFERENCE WELLPATH IDENTIFICATION

Operator	EQT PRODUCTION COMPANY	Well	Prine 3H (L-007058)
Field	Wetzel	API	47-103-03355-00-00
Facility	Prine Pad	Wellbore	Prine 3H (L-007058) AWB
Slot	Slot 03		

## WELLPATH DATA (271 stations)

MD [ft]	Inclination [°]	Azimuth [°]	TVD [ft]	Vert Sect [ft]	North [ft]	East [ft]	Grid East [US ft]	Grid North [US ft]	Latitude	Longitude	Closure Dist [ft]	Closure Dir [°]	DLS [°/100ft]	Build Rate [°/100ft]	Turn Rate [°/100ft]
1394.00	5.800	187.150	1392.19	-42.70	-48.11	15.18	1697773.20	427797.20	39°40'10.5280"N	80°34'25.1678"W	50.45	162.485	1.93	1.77	-8.35
1437.00	5.220	187.910	1434.99	-44.93	-52.20	14.64	1697772.66	427793.10	39°40'10.4874"N	80°34'25.1741"W	54.21	164.332	1.36	-1.35	1.77
1480.00	4.320	186.530	1477.84	-46.88	-55.75	14.19	1697772.21	427789.56	39°40'10.4523"N	80°34'25.1793"W	57.52	165.721	2.11	-2.09	-3.21
1523.00	3.310	188.830	1520.75	-48.43	-58.58	13.81	1697771.83	427786.72	39°40'10.4243"N	80°34'25.1837"W	60.19	166.732	2.38	-2.35	5.35
1567.00	2.390	181.840	1564.69	-49.67	-60.75	13.59	1697771.61	427784.55	39°40'10.4028"N	80°34'25.1862"W	62.26	167.392	2.23	-2.09	-15.89
1610.00	1.870	176.310	1607.66	-50.71	-62.35	13.61	1697771.62	427782.95	39°40'10.3870"N	80°34'25.1858"W	63.82	167.690	1.30	-1.21	-12.86
1653.00	1.660	171.610	1650.64	-51.67	-63.67	13.74	1697771.76	427781.64	39°40'10.3740"N	80°34'25.1838"W	65.13	167.820	0.59	-0.49	-10.93
1696.00	0.980	171.670	1693.63	-52.41	-64.65	13.89	1697771.90	427780.66	39°40'10.3643"N	80°34'25.1819"W	66.12	167.877	1.58	-1.58	0.14
1739.00	0.550	123.210	1736.63	-52.89	-65.12	14.11	1697772.13	427780.18	39°40'10.3597"N	80°34'25.1789"W	66.64	167.774	1.72	-1.00	-112.70
1782.00	0.050	173.110	1779.63	-53.11	-65.26	14.29	1697772.31	427780.05	39°40'10.3584"N	80°34'25.1766"W	66.80	167.651	1.21	-1.16	116.05
1825.00	0.640	29.380	1822.63	-53.08	-65.06	14.41	1697772.43	427780.24	39°40'10.3603"N	80°34'25.1751"W	66.64	167.515	1.58	1.37	-334.26
1867.00	0.430	7.560	1864.62	-52.95	-64.70	14.54	1697772.56	427780.60	39°40'10.3639"N	80°34'25.1734"W	66.32	167.333	0.69	-0.50	-51.95
1953.00	0.930	41.530	1950.62	-52.79	-63.86	15.05	1697773.07	427781.44	39°40'10.3722"N	80°34'25.1671"W	65.61	166.741	0.72	0.58	39.50
2039.00	0.280	78.470	2036.61	-52.93	-63.30	15.72	1697773.74	427782.01	39°40'10.3779"N	80°34'25.1587"W	65.22	166.056	0.84	-0.76	42.95
2125.00	0.680	188.370	2122.61	-53.33	-63.76	15.85	1697773.87	427781.54	39°40'10.3733"N	80°34'25.1569"W	65.70	166.042	0.95	0.47	127.79
2211.00	1.330	195.190	2208.60	-54.03	-65.23	15.51	1697773.53	427780.08	39°40'10.3588"N	80°34'25.1610"W	67.05	166.623	0.77	0.76	7.93
2298.00	0.710	217.140	2295.58	-54.48	-66.63	14.92	1697772.94	427778.67	39°40'10.3448"N	80°34'25.1683"W	68.28	167.377	0.83	-0.71	25.23
2384.00	0.570	348.000	2381.58	-54.18	-66.64	14.51	1697772.53	427778.67	39°40'10.3447"N	80°34'25.1735"W	68.20	167.715	1.36	-0.16	152.16
2469.00	1.420	13.100	2466.57	-53.36	-65.20	14.66	1697772.68	427780.10	39°40'10.3590"N	80°34'25.1718"W	66.83	167.326	1.10	1.00	29.53
2556.00	1.420	32.450	2553.54	-52.72	-63.24	15.48	1697773.50	427782.06	39°40'10.3784"N	80°34'25.1616"W	65.11	166.241	0.55	0.00	22.24
2642.00	1.410	61.920	2639.52	-52.96	-61.84	16.99	1697775.01	427783.46	39°40'10.3924"N	80°34'25.1426"W	64.13	164.638	0.84	-0.01	34.27
2728.00	1.240	104.340	2725.49	-54.19	-61.57	18.83	1697776.84	427783.73	39°40'10.3953"N	80°34'25.1192"W	64.39	163.000	1.13	-0.20	49.33
2815.00	1.890	150.640	2812.47	-56.38	-63.06	20.44	1697778.46	427782.25	39°40'10.3808"N	80°34'25.0983"W	66.29	162.039	1.57	0.75	53.22
2847.00	2.060	156.530	2844.45	-57.39	-64.05	20.93	1697778.95	427781.26	39°40'10.3711"N	80°34'25.0919"W	67.38	161.904	0.83	0.53	18.41
2937.00	2.640	169.470	2934.37	-60.45	-67.57	21.95	1697779.97	427777.74	39°40'10.3364"N	80°34'25.0783"W	71.04	162.002	0.87	0.64	14.38
2980.00	2.960	172.250	2977.32	-62.04	-69.64	22.28	1697780.30	427775.66	39°40'10.3160"N	80°34'25.0737"W	73.12	162.257	0.81	0.74	6.47
3023.00	3.620	178.010	3020.25	-63.78	-72.10	22.48	1697780.50	427773.21	39°40'10.2917"N	80°34'25.0708"W	75.52	162.683	1.71	1.53	13.40
3066.00	4.700	183.560	3063.13	-65.75	-75.21	22.42	1697780.44	427770.09	39°40'10.2609"N	80°34'25.0711"W	78.48	163.403	2.68	2.51	12.91
3109.00	6.010	188.010	3105.95	-68.01	-79.20	21.99	1697780.01	427766.10	39°40'10.2215"N	80°34'25.0759"W	82.20	164.480	3.19	3.05	10.35
3152.00	7.050	192.970	3148.67	-70.42	-84.00	21.09	1697779.11	427761.30	39°40'10.1739"N	80°34'25.0868"W	86.61	165.908	2.75	2.42	11.53





Where energy meets innovation.

# Actual Wellpath Report

Prine 3H (L-007058) AWP Proj: 22300'

Page 4 of 13



## REFERENCE WELLPATH IDENTIFICATION

Operator	EQT PRODUCTION COMPANY	Well	Prine 3H (L-007058)
Field	Wetzel	API	47-103-03355-00-00
Facility	Prine Pad	Wellbore	Prine 3H (L-007058) AWB
Slot	Slot 03		

## WELLPATH DATA (271 stations)

MD [ft]	Inclination [°]	Azimuth [°]	TVD [ft]	Vert Sect [ft]	North [ft]	East [ft]	Grid East [US ft]	Grid North [US ft]	Latitude	Longitude	Closure Dist [ft]	Closure Dir [°]	DLS [°/100ft]	Build Rate [°/100ft]	Turn Rate [°/100ft]
3195.00	8.250	196.940	3191.28	-72.86	-89.52	19.60	1697777.62	427755.78	39°40'10.1192"N	80°34'25.1050"W	91.64	167.653	3.05	2.79	9.23
3238.00	9.490	201.050	3233.77	-75.25	-95.78	17.42	1697775.44	427749.52	39°40'10.0570"N	80°34'25.1318"W	97.36	169.690	3.24	2.88	9.56
3281.00	10.380	204.360	3276.12	-77.49	-102.62	14.55	1697772.57	427742.68	39°40'9.9891"N	80°34'25.1675"W	103.65	171.928	2.46	2.07	7.70
3325.00	11.480	206.850	3319.33	-79.59	-110.14	10.94	1697768.96	427735.17	39°40'9.9144"N	80°34'25.2126"W	110.68	174.327	2.72	2.50	5.66
3368.00	12.350	208.510	3361.40	-81.53	-118.00	6.81	1697764.83	427727.31	39°40'9.8363"N	80°34'25.2641"W	118.19	176.696	2.17	2.02	3.86
3411.00	12.700	211.130	3403.38	-83.23	-126.09	2.17	1697760.19	427719.22	39°40'9.7558"N	80°34'25.3222"W	126.10	179.012	1.55	0.81	6.09
3454.00	12.750	214.990	3445.32	-84.42	-134.02	-2.99	1697755.03	427711.29	39°40'9.6768"N	80°34'25.3870"W	134.05	181.278	1.98	0.12	8.98
3497.00	12.860	217.210	3487.25	-85.12	-141.72	-8.61	1697749.42	427703.59	39°40'9.6000"N	80°34'25.4577"W	141.98	183.475	1.17	0.26	5.16
3541.00	12.930	218.360	3530.14	-85.55	-149.48	-14.62	1697743.40	427695.83	39°40'9.5227"N	80°34'25.5334"W	150.19	185.587	0.60	0.16	2.61
3584.00	13.000	217.180	3572.05	-85.98	-157.10	-20.53	1697737.49	427688.21	39°40'9.4466"N	80°34'25.6078"W	158.44	187.445	0.64	0.16	-2.74
3670.00	12.950	216.200	3655.85	-87.20	-172.59	-32.07	1697725.96	427672.72	39°40'9.2922"N	80°34'25.7529"W	175.54	190.526	0.26	-0.06	-1.14
3757.00	13.150	213.910	3740.60	-89.00	-188.67	-43.35	1697714.68	427656.65	39°40'9.1320"N	80°34'25.8947"W	193.58	192.939	0.64	0.23	-2.63
3843.00	14.390	213.000	3824.13	-91.45	-205.75	-54.62	1697703.40	427639.57	39°40'8.9618"N	80°34'26.0363"W	212.87	194.868	1.46	1.44	-1.06
3929.00	15.550	215.300	3907.21	-93.82	-224.12	-67.11	1697690.92	427621.20	39°40'8.7788"N	80°34'26.1931"W	233.95	196.669	1.52	1.35	2.67
4007.00	16.440	215.640	3982.19	-95.63	-241.62	-79.58	1697678.45	427603.69	39°40'8.6044"N	80°34'26.3499"W	254.39	198.229	1.15	1.14	0.44
4093.00	16.850	217.490	4064.59	-97.23	-261.40	-94.26	1697663.77	427583.91	39°40'8.4072"N	80°34'26.5346"W	277.88	199.828	0.78	0.48	2.15
4179.00	16.690	215.890	4146.93	-98.80	-281.30	-109.08	1697648.95	427564.02	39°40'8.2088"N	80°34'26.7211"W	301.71	201.195	0.57	-0.19	-1.86
4266.00	15.910	212.050	4230.44	-101.47	-301.53	-122.73	1697635.29	427543.79	39°40'8.0073"N	80°34'26.8926"W	325.55	202.148	1.53	-0.90	-4.41
4352.00	15.500	211.970	4313.22	-104.83	-321.26	-135.07	1697622.96	427524.05	39°40'7.8108"N	80°34'27.0473"W	348.50	202.804	0.48	-0.48	-0.09
4438.00	14.960	211.570	4396.20	-108.19	-340.47	-146.97	1697611.06	427504.85	39°40'7.6195"N	80°34'27.1965"W	370.84	203.348	0.64	-0.63	-0.47
4524.00	14.990	212.420	4479.28	-111.40	-359.32	-158.74	1697599.29	427486.01	39°40'7.4319"N	80°34'27.3442"W	392.82	203.835	0.26	0.03	0.99
4611.00	14.800	216.650	4563.36	-113.65	-377.73	-171.41	1697586.62	427467.59	39°40'7.2485"N	80°34'27.5033"W	414.80	204.408	1.27	-0.22	4.86
4697.00	15.140	214.980	4646.44	-115.40	-395.74	-184.40	1697573.63	427449.58	39°40'7.0689"N	80°34'27.6667"W	436.60	204.984	0.64	0.40	-1.94
4783.00	15.660	211.460	4729.36	-118.23	-414.85	-196.90	1697561.13	427430.48	39°40'6.8786"N	80°34'27.8236"W	459.20	205.391	1.24	0.60	-4.09
4869.00	16.010	213.010	4812.09	-121.52	-434.69	-209.42	1697548.61	427410.63	39°40'6.6810"N	80°34'27.9806"W	482.51	205.723	0.64	0.41	1.80
4955.00	16.610	214.660	4894.63	-124.24	-454.75	-222.87	1697535.16	427390.58	39°40'6.4812"N	80°34'28.1496"W	506.43	206.109	0.88	0.70	1.92
5041.00	16.890	216.270	4976.98	-126.33	-474.93	-237.25	1697520.78	427370.40	39°40'6.2801"N	80°34'28.3304"W	530.89	206.544	0.63	0.33	1.87
5128.00	16.760	215.660	5060.26	-128.23	-495.31	-252.04	1697505.99	427350.02	39°40'6.0769"N	80°34'28.5164"W	555.75	206.969	0.25	-0.15	-0.70
5214.00	16.580	221.650	5142.65	-128.95	-514.56	-267.43	1697490.61	427330.77	39°40'5.8849"N	80°34'28.7101"W	579.90	207.462	2.01	-0.21	6.97
5301.00	16.120	216.210	5226.14	-129.53	-533.58	-282.81	1697475.23	427311.75	39°40'5.6951"N	80°34'28.9040"W	603.90	207.925	1.84	-0.53	-6.25





Where energy meets innovation.

# Actual Wellpath Report

Prine 3H (L-007058) AWP Proj: 22300'

Page 5 of 13



REFERENCE WELLPATH IDENTIFICATION			
Operator	EQT PRODUCTION COMPANY	Well	Prine 3H (L-007058)
Field	Wetzel	API	47-103-03355-00-00
Facility	Prine Pad	Wellbore	Prine 3H (L-007058) AWB
Slot	Slot 03		

## WELLPATH DATA (271 stations)

MD [ft]	Inclination [°]	Azimuth [°]	TVD [ft]	Vert Sect [ft]	North [ft]	East [ft]	Grid East [US ft]	Grid North [US ft]	Latitude	Longitude	Closure Dist [ft]	Closure Dir [°]	DLS [°/100ft]	Build Rate [°/100ft]	Turn Rate [°/100ft]
5387.00	15.820	216.080	5308.82	-131.24	-552.69	-296.77	1697461.27	427292.65	39°40'5.5046"N	80°34'29.0795"W	627.32	208.234	0.35	-0.35	-0.15
5473.00	16.060	214.340	5391.51	-133.35	-571.98	-310.38	1697447.66	427273.35	39°40'5.3123"N	80°34'29.2506"W	650.77	208.486	0.62	0.28	-2.02
5559.00	15.220	212.280	5474.33	-136.16	-591.35	-323.12	1697434.92	427253.99	39°40'5.1194"N	80°34'29.4106"W	673.87	208.653	1.17	-0.98	-2.40
5646.00	14.900	216.580	5558.34	-138.48	-609.99	-335.89	1697422.15	427235.35	39°40'4.9337"N	80°34'29.5709"W	696.35	208.839	1.34	-0.37	4.94
5732.00	16.270	214.610	5641.18	-140.40	-628.78	-349.32	1697408.72	427216.56	39°40'4.7464"N	80°34'29.7398"W	719.30	209.054	1.71	1.59	-2.29
5818.00	16.470	214.100	5723.69	-142.91	-648.79	-363.00	1697395.05	427196.55	39°40'4.5471"N	80°34'29.9116"W	743.44	209.227	0.29	0.23	-0.59
5904.00	16.420	217.700	5806.18	-144.79	-668.51	-377.26	1697380.78	427176.83	39°40'4.3506"N	80°34'30.0911"W	767.61	209.438	1.19	-0.06	4.19
5991.00	16.850	219.310	5889.54	-145.57	-687.99	-392.77	1697365.27	427157.35	39°40'4.1562"N	80°34'30.2864"W	792.21	209.722	0.72	0.49	1.85
6077.00	16.320	220.050	5971.96	-145.84	-706.88	-408.44	1697349.60	427138.46	39°40'3.9676"N	80°34'30.4839"W	816.40	210.020	0.66	-0.62	0.86
6164.00	15.630	214.570	6055.60	-147.07	-725.89	-422.96	1697335.09	427119.45	39°40'3.7780"N	80°34'30.6666"W	840.13	210.228	1.91	-0.79	-6.30
6249.00	15.620	213.790	6137.46	-149.51	-744.83	-435.82	1697322.23	427100.51	39°40'3.5893"N	80°34'30.8281"W	862.97	210.333	0.25	-0.01	-0.92
6335.00	17.080	216.750	6219.98	-151.61	-764.58	-449.82	1697308.23	427080.77	39°40'3.3926"N	80°34'31.0041"W	887.08	210.469	1.95	1.70	3.44
6422.00	17.540	220.570	6303.05	-152.34	-784.77	-465.99	1697292.06	427060.58	39°40'3.1911"N	80°34'31.2078"W	912.70	210.701	1.41	0.53	4.39
6508.00	17.310	215.240	6385.11	-153.42	-805.07	-481.80	1697276.25	427040.28	39°40'2.9886"N	80°34'31.4068"W	938.22	210.899	1.87	-0.27	-6.20
6594.00	16.710	214.030	6467.34	-155.90	-825.76	-496.10	1697261.95	427019.59	39°40'2.7824"N	80°34'31.5865"W	963.33	210.997	0.81	-0.70	-1.41
6681.00	15.830	217.740	6550.86	-157.80	-845.51	-510.37	1697247.69	426999.84	39°40'2.5856"N	80°34'31.7659"W	987.61	211.116	1.56	-1.01	4.26
6767.00	15.900	217.590	6633.58	-158.88	-864.12	-524.73	1697233.32	426981.23	39°40'2.3999"N	80°34'31.9467"W	1010.97	211.268	0.09	0.08	-0.17
6853.00	15.520	212.610	6716.38	-160.99	-883.15	-538.12	1697219.93	426962.20	39°40'2.2103"N	80°34'32.1150"W	1034.18	211.355	1.63	-0.44	-5.79
6915.00	15.210	213.290	6776.16	-163.09	-896.94	-547.05	1697211.00	426948.42	39°40'2.0730"N	80°34'32.2271"W	1050.60	211.380	0.58	-0.50	1.10
6976.00	15.590	213.730	6834.97	-165.01	-910.44	-556.00	1697202.06	426934.91	39°40'1.9385"N	80°34'32.3394"W	1066.79	211.412	0.65	0.62	0.72
7071.00	14.720	230.240	6926.71	-164.39	-928.79	-572.37	1697185.68	426916.57	39°40'1.7553"N	80°34'32.5460"W	1090.99	211.644	4.62	-0.92	17.38
7166.00	15.990	267.640	7018.54	-152.66	-937.07	-594.78	1697163.28	426908.29	39°40'1.6708"N	80°34'32.8312"W	1109.89	212.404	10.33	1.34	39.37
7261.00	22.630	284.270	7108.21	-126.57	-933.09	-625.62	1697132.44	426912.26	39°40'1.7064"N	80°34'33.2262"W	1123.42	213.841	9.01	6.99	17.51
7356.00	30.830	288.730	7192.99	-87.44	-920.75	-666.46	1697091.60	426924.61	39°40'1.8236"N	80°34'33.7503"W	1136.64	215.898	8.88	8.63	4.69
7451.00	39.660	292.710	7270.51	-35.80	-901.19	-717.59	1697040.47	426944.17	39°40'2.0109"N	80°34'34.4071"W	1151.99	218.529	9.60	9.29	4.19
7547.00	48.110	300.780	7339.69	28.81	-870.99	-776.70	1696981.36	426974.36	39°40'2.3022"N	80°34'35.1675"W	1167.00	221.725	10.54	8.80	8.41
7642.00	57.550	309.260	7397.09	104.02	-827.38	-838.33	1696919.74	427017.97	39°40'2.7259"N	80°34'35.9622"W	1177.86	225.376	12.21	9.94	8.93
7738.00	66.070	312.000	7442.41	188.54	-772.28	-902.42	1696855.65	427073.06	39°40'3.2628"N	80°34'36.7902"W	1187.77	229.444	9.22	8.87	2.85
7833.00	74.140	313.650	7474.71	277.71	-711.59	-967.86	1696790.22	427133.75	39°40'3.8549"N	80°34'37.6362"W	1201.30	233.676	8.65	8.49	1.74
7928.00	81.720	315.310	7494.56	370.29	-646.53	-1034.08	1696724.00	427198.81	39°40'4.4899"N	80°34'38.4929"W	1219.56	237.985	8.16	7.98	1.75





Where energy meets innovation.

# Actual Wellpath Report

Prine 3H (L-007058) AWP Proj: 22300'

Page 6 of 13



## REFERENCE WELLPATH IDENTIFICATION

Operator	EQT PRODUCTION COMPANY	Well	Prine 3H (L-007058)
Field	Wetzel	API	47-103-03355-00-00
Facility	Prine Pad	Wellbore	Prine 3H (L-007058) AWB
Slot	Slot 03		

## WELLPATH DATA (271 stations)

MD [ft]	Inclination [°]	Azimuth [°]	TVD [ft]	Vert Sect [ft]	North [ft]	East [ft]	Grid East [US ft]	Grid North [US ft]	Latitude	Longitude	Closure Dist [ft]	Closure Dir [°]	DLS [°/100ft]	Buld Rate [°/100ft]	Turn Rate [°/100ft]
8023.00	90.430	316.280	7501.06	464.54	-578.66	-1100.10	1696657.99	427266.68	39°40'5.1529"N	80°34'39.3474"W	1243.00	242.255	9.22	9.17	1.02
8118.00	90.280	314.500	7500.47	559.16	-511.03	-1166.81	1696591.28	427334.30	39°40'5.8133"N	80°34'40.2108"W	1273.81	246.348	1.88	-0.16	-1.87
8214.00	91.200	315.110	7499.23	654.85	-443.39	-1234.91	1696523.18	427401.94	39°40'6.4737"N	80°34'41.0921"W	1312.10	250.250	1.15	0.96	0.64
8309.00	90.340	314.410	7497.95	749.56	-376.50	-1302.36	1696455.74	427468.82	39°40'7.1267"N	80°34'41.9648"W	1355.69	253.876	1.17	-0.91	-0.74
8404.00	90.150	314.440	7497.55	844.31	-310.00	-1370.21	1696387.89	427535.32	39°40'7.7758"N	80°34'42.8425"W	1404.84	257.252	0.20	-0.20	0.03
8499.00	89.350	313.900	7497.96	939.10	-243.81	-1438.35	1696319.76	427601.51	39°40'8.4219"N	80°34'43.7240"W	1458.87	260.379	1.02	-0.84	-0.57
8594.00	89.660	314.400	7498.78	1033.88	-177.64	-1506.51	1696251.60	427667.67	39°40'9.0677"N	80°34'44.6057"W	1516.95	263.275	0.62	0.33	0.53
8690.00	89.820	315.020	7499.22	1129.59	-110.10	-1574.73	1696183.38	427735.20	39°40'9.7270"N	80°34'45.4885"W	1578.58	266.000	0.67	0.17	0.65
8785.00	90.490	315.990	7498.96	1224.20	-42.34	-1641.31	1696116.81	427802.96	39°40'10.3888"N	80°34'46.3502"W	1641.86	268.522	1.24	0.71	1.02
8880.00	90.280	315.750	7498.32	1318.75	25.85	-1707.46	1696050.67	427871.14	39°40'11.0547"N	80°34'47.2065"W	1707.65	270.867	0.34	-0.22	-0.25
8975.00	90.030	316.420	7498.07	1413.27	94.28	-1773.35	1695984.78	427939.57	39°40'11.7232"N	80°34'48.0596"W	1775.85	273.043	0.75	-0.26	0.71
9070.00	90.120	315.420	7497.94	1507.81	162.52	-1839.44	1695918.70	428007.81	39°40'12.3898"N	80°34'48.9151"W	1846.60	275.049	1.06	0.09	-1.05
9260.00	89.350	314.990	7498.82	1697.12	297.35	-1973.30	1695784.84	428142.63	39°40'13.7063"N	80°34'50.6476"W	1995.58	278.569	0.46	-0.41	-0.23
9355.00	89.850	316.670	7499.48	1791.67	365.49	-2039.49	1695718.65	428210.77	39°40'14.3717"N	80°34'51.5045"W	2071.98	280.160	1.85	0.53	1.77
9450.00	89.600	315.980	7499.94	1886.14	434.20	-2105.10	1695653.05	428279.47	39°40'15.0429"N	80°34'52.3539"W	2149.41	281.654	0.77	-0.26	-0.73
9546.00	89.510	314.590	7500.68	1981.78	502.41	-2172.64	1695585.52	428347.68	39°40'15.7090"N	80°34'53.2281"W	2229.97	283.021	1.45	-0.09	-1.45
9641.00	89.540	315.930	7501.47	2076.42	569.89	-2239.50	1695518.66	428415.15	39°40'16.3679"N	80°34'54.0935"W	2310.87	284.277	1.41	0.03	1.41
9735.00	89.380	314.290	7502.36	2170.08	636.48	-2305.84	1695452.32	428481.74	39°40'17.0181"N	80°34'54.9520"W	2392.07	285.431	1.75	-0.17	-1.74
9831.00	89.660	316.290	7503.16	2265.71	704.70	-2373.37	1695384.80	428549.95	39°40'17.6842"N	80°34'55.8260"W	2475.78	286.537	2.10	0.29	2.08
9925.00	89.450	315.300	7503.89	2359.28	772.08	-2438.90	1695319.26	428617.33	39°40'18.3423"N	80°34'56.6745"W	2558.20	287.566	1.08	-0.22	-1.05
10020.00	89.820	315.830	7504.50	2453.87	839.91	-2505.41	1695252.76	428685.16	39°40'19.0047"N	80°34'57.5354"W	2642.45	288.533	0.68	0.39	0.56
10115.00	89.940	315.680	7504.70	2548.44	907.97	-2571.70	1695186.48	428753.21	39°40'19.6693"N	80°34'58.3935"W	2727.27	289.446	0.20	0.13	-0.16
10211.00	89.970	317.020	7504.77	2643.91	977.43	-2637.96	1695120.22	428822.67	39°40'20.3479"N	80°34'59.2515"W	2813.22	290.331	1.40	0.03	1.40
10306.00	90.250	316.170	7504.59	2738.34	1046.44	-2703.24	1695054.95	428891.68	39°40'21.0222"N	80°35'0.0969"W	2898.71	291.162	0.94	0.29	-0.89
10401.00	89.780	313.420	7504.57	2833.04	1113.37	-2770.65	1694987.54	428958.60	39°40'21.6755"N	80°35'0.9692"W	2985.98	291.893	2.94	-0.49	-2.89
10496.00	89.450	314.050	7505.20	2927.86	1179.05	-2839.29	1694918.91	429024.27	39°40'22.3164"N	80°35'1.8571"W	3074.36	292.551	0.75	-0.35	0.66
10592.00	89.940	315.320	7505.71	3023.58	1246.55	-2907.54	1694850.66	429091.78	39°40'22.9753"N	80°35'2.7403"W	3163.49	293.206	1.42	0.51	1.32
10687.00	90.030	314.810	7505.74	3118.25	1313.80	-2974.64	1694783.56	429159.02	39°40'23.6319"N	80°35'3.6087"W	3251.85	293.830	0.55	0.09	-0.54
10782.00	89.450	313.920	7506.17	3213.01	1380.23	-3042.55	1694715.66	429225.44	39°40'24.2803"N	80°35'4.4874"W	3340.98	294.401	1.12	-0.61	-0.94
10877.00	89.820	315.570	7506.78	3307.72	1447.10	-3110.02	1694648.19	429292.31	39°40'24.9331"N	80°35'5.3605"W	3430.21	294.953	1.78	0.39	1.74





Where energy meets innovation.

# Actual Wellpath Report

Prine 3H (L-007058) AWP Proj: 22300'

Page 7 of 13



REFERENCE WELLPATH IDENTIFICATION			
Operator	EQT PRODUCTION COMPANY	Well	Prine 3H (L-007058)
Field	Wetzel	API	47-103-03355-00-00
Facility	Prine Pad	Wellbore	Prine 3H (L-007058) AWB
Slot	Slot 03		

## WELLPATH DATA (271 stations)

MD [ft]	Inclination [°]	Azimuth [°]	TVD [ft]	Vert Sect [ft]	North [ft]	East [ft]	Grid East [US ft]	Grid North [US ft]	Latitude	Longitude	Closure Dist [ft]	Closure Dir [°]	DLS [°/100ft]	Build Rate [°/100ft]	Turn Rate [°/100ft]
10972.00	91.320	315.910	7505.83	3402.29	1515.13	-3176.32	1694581.90	429360.34	39°40'25.5975"N	80°35'6.2188"W	3519.18	295.502	1.62	1.58	0.36
11067.00	90.580	313.170	7504.26	3497.01	1581.75	-3244.01	1694514.20	429426.95	39°40'26.2477"N	80°35'7.0947"W	3609.09	295.993	2.99	-0.78	-2.88
11162.00	91.170	315.310	7502.80	3591.77	1648.02	-3312.06	1694446.16	429493.21	39°40'26.8945"N	80°35'7.9752"W	3699.42	296.454	2.34	0.62	2.25
11258.00	90.580	313.650	7501.34	3687.50	1715.27	-3380.55	1694377.68	429560.46	39°40'27.5509"N	80°35'8.8613"W	3790.81	296.903	1.83	-0.61	-1.73
11353.00	91.020	314.030	7500.01	3782.31	1781.06	-3449.06	1694309.17	429626.25	39°40'28.1929"N	80°35'9.7477"W	3881.78	297.311	0.61	0.46	0.40
11448.00	90.890	314.090	7498.43	3877.09	1847.12	-3517.32	1694240.92	429692.30	39°40'28.8375"N	80°35'10.6307"W	3972.83	297.706	0.15	-0.14	0.06
11543.00	90.740	313.880	7497.08	3971.89	1913.09	-3585.67	1694172.57	429758.27	39°40'29.4813"N	80°35'11.5150"W	4064.10	298.082	0.27	-0.16	-0.22
11638.00	90.710	314.450	7495.88	4066.67	1979.27	-3653.81	1694104.44	429824.45	39°40'30.1272"N	80°35'12.3966"W	4155.46	298.444	0.60	-0.03	0.60
11732.00	90.430	312.430	7494.94	4160.52	2043.90	-3722.05	1694036.19	429889.07	39°40'30.7577"N	80°35'13.2793"W	4246.32	298.773	2.17	-0.30	-2.15
11828.00	90.430	311.470	7494.22	4256.47	2108.07	-3793.45	1693964.80	429953.24	39°40'31.3833"N	80°35'14.2023"W	4339.84	299.061	1.00	0.00	-1.00
11923.00	90.580	312.420	7493.38	4351.43	2171.56	-3864.10	1693894.15	430016.73	39°40'32.0024"N	80°35'15.1156"W	4432.49	299.335	1.01	0.16	1.00
12018.00	90.860	314.390	7492.19	4446.28	2236.84	-3933.11	1693825.14	430082.00	39°40'32.6391"N	80°35'16.0082"W	4524.69	299.628	2.09	0.29	2.07
12113.00	90.860	314.390	7490.76	4541.03	2303.28	-4000.99	1693757.27	430148.44	39°40'33.2877"N	80°35'16.8866"W	4616.61	299.928	0.00	0.00	0.00
12208.00	90.460	314.240	7489.67	4635.79	2369.65	-4068.96	1693689.31	430214.80	39°40'33.9354"N	80°35'17.7660"W	4708.68	300.215	0.45	-0.42	-0.16
12303.00	90.460	313.700	7488.91	4730.59	2435.60	-4137.33	1693620.94	430280.75	39°40'34.5790"N	80°35'18.6506"W	4801.01	300.485	0.57	0.00	-0.57
12398.00	90.000	312.540	7488.52	4825.47	2500.53	-4206.67	1693551.60	430345.68	39°40'35.2123"N	80°35'19.5474"W	4893.75	300.728	1.31	-0.48	-1.22
12493.00	90.280	313.860	7488.29	4920.35	2565.56	-4275.92	1693482.36	430410.71	39°40'35.8467"N	80°35'20.4431"W	4986.55	300.964	1.42	0.29	1.39
12587.00	90.740	315.790	7487.46	5014.05	2631.82	-4342.59	1693415.70	430476.96	39°40'36.4935"N	80°35'21.3059"W	5077.85	301.218	2.11	0.49	2.05
12682.00	90.370	314.120	7486.53	5108.73	2698.94	-4409.81	1693348.48	430544.08	39°40'37.1487"N	80°35'22.1759"W	5170.17	301.468	1.80	-0.39	-1.76
12777.00	90.710	314.800	7485.64	5203.48	2765.48	-4477.61	1693280.68	430610.61	39°40'37.7981"N	80°35'23.0533"W	5262.78	301.700	0.80	0.36	0.72
12872.00	90.280	313.960	7484.82	5298.23	2831.92	-4545.51	1693212.79	430677.04	39°40'38.4466"N	80°35'23.9319"W	5355.50	301.924	0.99	-0.45	-0.88
12967.00	90.650	315.300	7484.05	5392.96	2898.65	-4613.11	1693145.19	430743.78	39°40'39.0980"N	80°35'24.8068"W	5448.21	302.143	1.46	0.39	1.41
13062.00	90.460	313.670	7483.13	5487.70	2965.22	-4680.88	1693077.42	430810.34	39°40'39.7476"N	80°35'25.6838"W	5541.04	302.353	1.73	-0.20	-1.72
13157.00	90.250	314.480	7482.54	5582.49	3031.30	-4749.13	1693009.18	430876.41	39°40'40.3925"N	80°35'26.5669"W	5634.09	302.549	0.88	-0.22	0.85
13252.00	90.280	314.480	7482.10	5677.24	3097.86	-4816.91	1692941.40	430942.97	39°40'41.0421"N	80°35'27.4440"W	5727.07	302.746	0.03	0.03	0.00
13348.00	90.580	314.990	7481.38	5772.95	3165.42	-4885.10	1692873.21	431010.53	39°40'41.7016"N	80°35'28.3266"W	5821.01	302.942	0.62	0.31	0.53
13443.00	90.860	315.610	7480.19	5867.58	3232.94	-4951.92	1692806.40	431078.05	39°40'42.3609"N	80°35'29.1916"W	5913.84	303.139	0.72	0.29	0.65
13538.00	90.400	314.720	7479.14	5962.23	3300.31	-5018.90	1692739.43	431145.41	39°40'43.0185"N	80°35'30.0586"W	6006.78	303.328	1.05	-0.48	-0.94
13633.00	90.550	315.690	7478.35	6056.88	3367.72	-5085.83	1692672.50	431212.81	39°40'43.6767"N	80°35'30.9250"W	6099.77	303.512	1.03	0.16	1.02
13728.00	90.220	315.310	7477.71	6151.49	3435.48	-5152.41	1692605.92	431280.57	39°40'44.3383"N	80°35'31.7871"W	6192.73	303.694	0.53	-0.35	-0.40





Where energy meets innovation.

# Actual Wellpath Report

Prine 3H (L-007058) AWP Proj: 22300'

Page 8 of 13



## REFERENCE WELLPATH IDENTIFICATION

Operator	EQT PRODUCTION COMPANY	Well	Prine 3H (L-007058)
Field	Wetzel	API	47-103-03355-00-00
Facility	Prine Pad	Wellbore	Prine 3H (L-007058) AWB
Slot	Slot 03		

## WELLPATH DATA (271 stations)

MD [ft]	Inclination [°]	Azimuth [°]	TVD [ft]	Vert Sect [ft]	North [ft]	East [ft]	Grid East [US ft]	Grid North [US ft]	Latitude	Longitude	Closure Dist [ft]	Closure Dir [°]	DLS [°/100ft]	Build Rate [°/100ft]	Turn Rate [°/100ft]
13823.00	90.460	314.720	7477.15	6246.17	3502.67	-5219.57	1692538.77	431347.75	39°40'44.9942"N	80°35'32.6564"W	6285.90	303.864	0.67	0.25	-0.62
13918.00	90.090	314.510	7476.70	6340.90	3569.39	-5287.19	1692471.15	431414.47	39°40'45.6455"N	80°35'33.5316"W	6379.26	304.023	0.45	-0.39	-0.22
14013.00	91.350	314.840	7475.50	6435.61	3636.17	-5354.74	1692403.60	431481.25	39°40'46.2973"N	80°35'34.4058"W	6472.64	304.179	1.37	1.33	0.35
14108.00	91.450	315.230	7473.18	6530.26	3703.37	-5421.86	1692336.49	431548.44	39°40'46.9533"N	80°35'35.2746"W	6565.93	304.335	0.42	0.11	0.41
14203.00	90.650	313.500	7471.44	6625.00	3769.78	-5489.76	1692268.60	431614.85	39°40'47.6015"N	80°35'36.1533"W	6659.48	304.477	2.01	-0.84	-1.82
14299.00	90.770	315.460	7470.25	6720.74	3837.04	-5558.24	1692200.11	431682.10	39°40'48.2579"N	80°35'37.0396"W	6754.03	304.619	2.05	0.12	2.04
14394.00	90.860	315.360	7468.90	6815.35	3904.69	-5624.93	1692133.43	431749.75	39°40'48.9184"N	80°35'37.9030"W	6847.36	304.767	0.14	0.09	-0.11
14490.00	91.080	314.770	7467.27	6911.01	3972.63	-5692.73	1692065.64	431817.69	39°40'49.5817"N	80°35'38.7806"W	6941.83	304.909	0.66	0.23	-0.61
14585.00	92.520	312.760	7464.29	7005.78	4038.31	-5761.29	1691997.08	431883.36	39°40'50.2225"N	80°35'39.6677"W	7035.65	305.028	2.60	1.52	-2.12
14680.00	92.090	309.510	7460.47	7100.68	4100.74	-5832.78	1691925.60	431945.79	39°40'50.8308"N	80°35'40.5917"W	7130.03	305.109	3.45	-0.45	-3.42
14775.00	89.850	307.930	7458.86	7195.62	4160.15	-5906.88	1691851.50	432005.20	39°40'51.4090"N	80°35'41.5486"W	7224.82	305.157	2.89	-2.36	-1.66
14870.00	90.150	309.380	7458.86	7290.58	4219.49	-5981.06	1691777.32	432064.53	39°40'51.9865"N	80°35'42.5066"W	7319.65	305.202	1.56	0.32	1.53
14965.00	90.310	307.710	7458.48	7385.53	4278.69	-6055.36	1691703.03	432123.73	39°40'52.5625"N	80°35'43.4661"W	7414.48	305.245	1.77	0.17	-1.76
15060.00	90.180	304.120	7458.07	7480.23	4334.40	-6132.29	1691626.11	432179.44	39°40'53.1038"N	80°35'44.4586"W	7509.46	305.253	3.78	-0.14	-3.78
15156.00	90.150	299.460	7457.79	7575.15	4384.96	-6213.86	1691544.53	432229.99	39°40'53.5937"N	80°35'45.5097"W	7605.26	305.210	4.85	-0.03	-4.85
15251.00	89.450	299.680	7458.13	7668.48	4431.84	-6296.49	1691461.91	432276.87	39°40'54.0470"N	80°35'46.5738"W	7699.81	305.140	0.77	-0.74	0.23
15346.00	89.570	299.570	7458.94	7761.83	4478.80	-6379.07	1691379.34	432323.83	39°40'54.5011"N	80°35'47.6372"W	7794.37	305.073	0.17	0.13	-0.12
15441.00	89.140	298.220	7460.01	7854.94	4524.70	-6462.23	1691296.18	432369.73	39°40'54.9447"N	80°35'48.7080"W	7888.81	304.999	1.49	-0.45	-1.42
15536.00	89.110	298.630	7461.46	7947.90	4569.92	-6545.77	1691212.65	432414.94	39°40'55.3814"N	80°35'49.7834"W	7983.19	304.921	0.43	-0.03	0.43
15631.00	89.420	300.190	7462.68	8041.17	4616.56	-6628.52	1691129.91	432461.58	39°40'55.8324"N	80°35'50.8490"W	8077.74	304.856	1.67	0.33	1.64
15726.00	89.050	301.490	7463.95	8134.87	4665.26	-6710.08	1691048.35	432510.27	39°40'56.3038"N	80°35'51.8997"W	8172.50	304.809	1.42	-0.39	1.37
15821.00	88.740	304.680	7465.78	8229.08	4717.10	-6789.65	1690968.79	432562.11	39°40'56.8065"N	80°35'52.9254"W	8267.43	304.790	3.37	-0.33	3.36
15916.00	89.940	308.130	7466.87	8323.84	4773.47	-6866.09	1690892.35	432618.48	39°40'57.3543"N	80°35'53.9119"W	8362.37	304.808	3.84	1.26	3.63
16012.00	91.050	313.440	7466.04	8419.80	4836.15	-6938.75	1690819.69	432681.16	39°40'57.9650"N	80°35'54.8509"W	8457.81	304.876	5.65	1.16	5.53
16106.00	90.060	310.260	7465.13	8513.75	4898.85	-7008.76	1690749.69	432743.86	39°40'58.5761"N	80°35'55.7561"W	8551.11	304.952	3.54	-1.05	-3.38
16201.00	90.000	312.160	7465.08	8608.73	4961.44	-7080.22	1690678.23	432806.44	39°40'59.1860"N	80°35'56.6799"W	8645.54	305.021	2.00	-0.06	2.00
16296.00	90.310	316.360	7464.83	8703.48	5027.73	-7148.24	1690610.21	432872.72	39°40'59.8328"N	80°35'57.5602"W	8739.30	305.121	4.43	0.33	4.42
16391.00	89.970	318.730	7464.59	8797.72	5097.81	-7212.36	1690546.10	432942.80	39°41'0.5177"N	80°35'58.3913"W	8832.09	305.253	2.52	-0.36	2.49
16486.00	90.250	323.610	7464.41	8890.99	5171.80	-7271.91	1690486.55	433016.78	39°41'1.2416"N	80°35'59.1644"W	8923.46	305.421	5.15	0.29	5.14
16582.00	90.490	325.100	7463.79	8984.11	5249.81	-7327.85	1690430.61	433094.79	39°41'2.0058"N	80°35'59.8921"W	9014.32	305.618	1.57	0.25	1.55





Where energy meets innovation.

# Actual Wellpath Report

Prine 3H (L-007058) AWP Proj: 22300'

Page 9 of 13



## REFERENCE WELLPATH IDENTIFICATION

Operator	EQT PRODUCTION COMPANY	Well	Prine 3H (L-007058)
Field	Wetzel	API	47-103-03355-00-00
Facility	Prine Pad	Wellbore	Prine 3H (L-007058) AWB
Slot	Slot 03		

## WELLPATH DATA (271 stations)

MD [ft]	Inclination [°]	Azimuth [°]	TVD [ft]	Vert Sect [ft]	North [ft]	East [ft]	Grid East [US ft]	Grid North [US ft]	Latitude	Longitude	Closure Dist [ft]	Closure Dir [°]	DLS [°/100ft]	Build Rate [°/100ft]	Turn Rate [°/100ft]
16677.00	90.370	325.260	7463.08	9075.93	5327.79	-7382.10	1690376.37	433172.77	39°41'2.7699"N	80°36'0.5981"W	9103.89	305.819	0.21	-0.13	0.17
16773.00	89.780	325.190	7462.95	9168.70	5406.65	-7436.85	1690321.62	433251.62	39°41'3.5425"N	80°36'1.3107"W	9194.49	306.017	0.62	-0.61	-0.07
16868.00	90.000	324.840	7463.13	9260.58	5484.48	-7491.32	1690267.16	433329.45	39°41'4.3051"N	80°36'2.0196"W	9284.36	306.208	0.44	0.23	-0.37
16963.00	90.060	324.470	7463.08	9352.62	5561.97	-7546.28	1690212.20	433406.93	39°41'5.0642"N	80°36'2.7346"W	9374.53	306.392	0.39	0.06	-0.39
17059.00	90.180	324.630	7462.88	9445.67	5640.17	-7601.96	1690156.53	433485.13	39°41'5.8303"N	80°36'3.4590"W	9465.80	306.573	0.21	0.12	0.17
17154.00	90.340	325.710	7462.45	9537.49	5718.15	-7656.21	1690102.27	433563.10	39°41'6.5944"N	80°36'4.1651"W	9555.88	306.755	1.15	0.17	1.14
17248.00	90.310	325.510	7461.92	9628.16	5795.72	-7709.31	1690049.18	433640.67	39°41'7.3545"N	80°36'4.8563"W	9644.88	306.935	0.22	-0.03	-0.21
17343.00	90.280	324.390	7461.43	9720.07	5873.49	-7763.86	1689994.63	433718.43	39°41'8.1164"N	80°36'5.5663"W	9735.27	307.108	1.18	-0.03	-1.18
17439.00	90.000	325.280	7461.20	9813.00	5951.97	-7819.15	1689939.35	433796.91	39°41'8.8853"N	80°36'6.2857"W	9826.75	307.279	0.97	-0.29	0.93
17533.00	89.880	324.780	7461.29	9903.92	6029.00	-7873.03	1689885.47	433873.93	39°41'9.6399"N	80°36'6.9869"W	9916.32	307.444	0.55	-0.13	-0.53
17628.00	90.340	324.460	7461.11	9995.97	6106.45	-7928.03	1689830.47	433951.38	39°41'10.3987"N	80°36'7.7025"W	10007.12	307.605	0.59	0.48	-0.34
17723.00	89.720	324.410	7461.06	10088.10	6183.73	-7983.29	1689775.22	434028.66	39°41'11.1557"N	80°36'8.4214"W	10098.09	307.761	0.65	-0.65	-0.05
17818.00	90.060	325.370	7461.24	10180.03	6261.45	-8037.92	1689720.59	434106.36	39°41'11.9171"N	80°36'9.1324"W	10188.91	307.918	1.07	0.36	1.01
17914.00	91.050	325.550	7460.31	10272.69	6340.52	-8092.35	1689666.16	434185.43	39°41'12.6919"N	80°36'9.8409"W	10280.48	308.079	1.05	1.03	0.19
18009.00	90.180	324.310	7459.29	10364.61	6418.27	-8146.93	1689611.59	434263.17	39°41'13.4536"N	80°36'10.5512"W	10371.43	308.232	1.59	-0.92	-1.31
18104.00	90.520	321.510	7458.71	10457.31	6494.04	-8204.22	1689554.31	434338.94	39°41'14.1954"N	80°36'11.2958"W	10463.35	308.363	2.97	0.36	-2.95
18199.00	90.280	319.130	7458.05	10550.85	6567.14	-8264.87	1689493.66	434412.04	39°41'14.9105"N	80°36'12.0830"W	10556.30	308.470	2.52	-0.25	-2.51
18294.00	90.710	317.210	7457.23	10644.95	6637.92	-8328.22	1689430.31	434482.82	39°41'15.6023"N	80°36'12.9044"W	10649.94	308.556	2.07	0.45	-2.02
18389.00	90.490	317.230	7456.24	10739.26	6707.65	-8392.74	1689365.79	434552.54	39°41'16.2835"N	80°36'13.7406"W	10743.86	308.633	0.23	-0.23	0.02
18484.00	90.680	316.740	7455.27	10833.61	6777.11	-8457.54	1689300.99	434621.99	39°41'16.9620"N	80°36'14.5804"W	10837.86	308.706	0.55	0.20	-0.52
18579.00	90.550	316.450	7454.25	10928.03	6846.12	-8522.82	1689235.72	434691.00	39°41'17.6361"N	80°36'15.4261"W	10931.96	308.774	0.33	-0.14	-0.31
18675.00	90.250	313.700	7453.58	11023.69	6914.08	-8590.60	1689167.94	434758.96	39°41'18.2995"N	80°36'16.3038"W	11027.38	308.829	2.88	-0.31	-2.86
18770.00	90.550	314.370	7452.91	11118.49	6980.12	-8658.90	1689099.65	434824.99	39°41'18.9438"N	80°36'17.1877"W	11121.98	308.873	0.77	0.32	0.71
18865.00	90.430	315.520	7452.10	11213.17	7047.22	-8726.13	1689032.42	434892.09	39°41'19.5988"N	80°36'18.0583"W	11216.45	308.924	1.22	-0.13	1.21
18960.00	90.770	315.430	7451.10	11307.78	7114.95	-8792.75	1688965.81	434959.81	39°41'20.2600"N	80°36'18.9209"W	11310.83	308.979	0.37	0.36	-0.09
19056.00	90.370	314.040	7450.15	11403.49	7182.51	-8860.94	1688897.62	435027.37	39°41'20.9193"N	80°36'19.8038"W	11406.34	309.028	1.51	-0.42	-1.45
19151.00	90.650	315.300	7449.30	11498.20	7249.29	-8928.49	1688830.07	435094.15	39°41'21.5711"N	80°36'20.6784"W	11500.88	309.074	1.36	0.29	1.33
19246.00	90.550	316.850	7448.31	11592.72	7317.71	-8994.39	1688764.18	435162.57	39°41'22.2392"N	80°36'21.5320"W	11595.17	309.131	1.63	-0.11	1.63
19341.00	91.050	316.450	7446.98	11687.13	7386.79	-9059.60	1688698.98	435231.64	39°41'22.9139"N	80°36'22.3769"W	11689.35	309.192	0.67	0.53	-0.42
19436.00	90.620	312.520	7445.60	11781.84	7453.33	-9127.35	1688631.22	435298.18	39°41'23.5633"N	80°36'23.2540"W	11783.92	309.235	4.16	-0.45	-4.14





Where energy meets innovation.

# Actual Wellpath Report

Prine 3H (L-007058) AWP Proj: 22300'

Page 10 of 13



## REFERENCE WELLPATH IDENTIFICATION

Operator	EQT PRODUCTION COMPANY	Well	Prine 3H (L-007058)
Field	Wetzel	API	47-103-03355-00-00
Facility	Prine Pad	Wellbore	Prine 3H (L-007058) AWB
Slot	Slot 03		

## WELLPATH DATA (271 stations)

MD [ft]	Inclination [°]	Azimuth [°]	TVD [ft]	Vert Sect [ft]	North [ft]	East [ft]	Grid East [US ft]	Grid North [US ft]	Latitude	Longitude	Closure Dist [ft]	Closure Dir [°]	DLS [°/100ft]	Bulld Rate [°/100ft]	Turn Rate [°/100ft]
19532.00	90.860	314.890	7444.36	11877.66	7519.65	-9196.74	1688561.84	435364.50	39°41'24.2102"N	80°36'24.1520"W	11879.61	309.271	2.48	0.25	2.47
19627.00	90.400	311.650	7443.31	11972.52	7584.76	-9265.90	1688492.69	435429.60	39°41'24.8452"N	80°36'25.0468"W	11974.37	309.303	3.44	-0.48	-3.41
19722.00	91.080	314.240	7442.09	12067.40	7649.47	-9335.43	1688423.16	435494.30	39°41'25.4762"N	80°36'25.9464"W	12069.16	309.331	2.82	0.72	2.73
19817.00	90.980	313.570	7440.38	12162.20	7715.34	-9403.86	1688354.73	435560.17	39°41'26.1188"N	80°36'26.8321"W	12163.84	309.367	0.71	-0.11	-0.71
19913.00	90.860	312.150	7438.84	12258.09	7780.63	-9474.22	1688284.37	435625.45	39°41'26.7554"N	80°36'27.7423"W	12259.65	309.394	1.48	-0.12	-1.48
20008.00	91.170	314.330	7437.15	12352.94	7845.69	-9543.41	1688215.19	435690.52	39°41'27.3900"N	80°36'28.6376"W	12354.42	309.424	2.32	0.33	2.29
20103.00	91.170	314.090	7435.21	12447.70	7911.92	-9611.49	1688147.11	435756.74	39°41'28.0362"N	80°36'29.5189"W	12449.07	309.460	0.25	0.00	-0.25
20198.00	90.580	314.870	7433.76	12542.44	7978.48	-9679.27	1688079.34	435823.29	39°41'28.6856"N	80°36'30.3963"W	12543.70	309.498	1.03	-0.62	0.82
20293.00	90.370	313.620	7432.98	12637.21	8044.76	-9747.32	1688011.30	435889.57	39°41'29.3323"N	80°36'31.2771"W	12638.37	309.534	1.33	-0.22	-1.32
20388.00	90.650	314.780	7432.13	12731.98	8110.98	-9815.42	1687943.20	435955.79	39°41'29.9785"N	80°36'32.1587"W	12733.05	309.569	1.26	0.29	1.22
20483.00	90.680	314.650	7431.03	12826.70	8177.82	-9882.93	1687875.70	436022.62	39°41'30.6308"N	80°36'33.0327"W	12827.66	309.607	0.14	0.03	-0.14
20578.00	91.480	315.780	7429.24	12921.33	8245.23	-9949.83	1687808.79	436090.03	39°41'31.2888"N	80°36'33.8992"W	12922.19	309.648	1.46	0.84	1.19
20673.00	91.050	315.150	7427.14	13015.92	8312.93	-10016.45	1687742.19	436157.73	39°41'31.9497"N	80°36'34.7619"W	13016.68	309.690	0.80	-0.45	-0.66
20768.00	90.980	314.300	7425.46	13110.62	8379.77	-10083.93	1687674.70	436224.56	39°41'32.6020"N	80°36'35.6357"W	13111.30	309.727	0.90	-0.07	-0.89
20864.00	90.180	315.060	7424.48	13206.34	8447.27	-10152.19	1687606.45	436292.06	39°41'33.2607"N	80°36'36.5194"W	13206.94	309.763	1.15	-0.83	0.79
20959.00	90.950	313.930	7423.55	13301.08	8513.85	-10219.95	1687538.70	436358.63	39°41'33.9103"N	80°36'37.3967"W	13301.61	309.796	1.44	0.81	-1.19
21054.00	91.080	314.510	7421.87	13395.84	8580.09	-10288.02	1687470.63	436424.87	39°41'34.5567"N	80°36'38.2779"W	13396.32	309.828	0.63	0.14	0.61
21149.00	91.080	314.850	7420.07	13490.55	8646.88	-10355.56	1687403.10	436491.65	39°41'35.2084"N	80°36'39.1523"W	13490.96	309.862	0.36	0.00	0.36
21245.00	91.020	314.180	7418.32	13586.27	8714.17	-10424.00	1687334.66	436558.94	39°41'35.8651"N	80°36'40.0384"W	13586.63	309.895	0.70	-0.06	-0.70
21340.00	91.140	314.450	7416.52	13681.03	8780.53	-10491.96	1687266.70	436625.29	39°41'36.5125"N	80°36'40.9182"W	13681.33	309.925	0.31	0.13	0.28
21435.00	91.080	314.820	7414.68	13775.74	8847.26	-10559.55	1687199.11	436692.02	39°41'37.1637"N	80°36'41.7933"W	13776.00	309.958	0.39	-0.06	0.39
21531.00	90.860	315.320	7413.06	13871.39	8915.22	-10627.34	1687131.33	436759.97	39°41'37.8270"N	80°36'42.6712"W	13871.60	309.993	0.57	-0.23	0.52
21626.00	91.050	315.920	7411.48	13965.97	8983.10	-10693.77	1687064.90	436827.86	39°41'38.4897"N	80°36'43.5318"W	13966.14	310.031	0.66	0.20	0.63
21722.00	90.920	315.580	7409.83	14061.52	9051.86	-10760.75	1686997.93	436896.61	39°41'39.1610"N	80°36'44.3994"W	14061.65	310.070	0.38	-0.14	-0.35
21817.00	91.110	316.890	7408.14	14156.00	9120.45	-10826.45	1686932.23	436965.20	39°41'39.8308"N	80°36'45.2507"W	14156.08	310.112	1.39	0.20	1.38
21913.00	90.620	315.280	7406.69	14251.50	9189.60	-10893.03	1686865.66	437034.34	39°41'40.5060"N	80°36'46.1132"W	14251.55	310.152	1.75	-0.51	-1.68
22008.00	90.800	315.540	7405.52	14346.11	9257.25	-10959.71	1686798.98	437101.98	39°41'41.1663"N	80°36'46.9770"W	14346.15	310.186	0.33	0.19	0.27
22104.00	90.770	315.350	7404.20	14441.72	9325.65	-11027.06	1686731.63	437170.38	39°41'41.8341"N	80°36'47.8493"W	14441.74	310.221	0.20	-0.03	-0.20
22199.00	90.740	315.710	7402.95	14536.32	9393.44	-11093.60	1686665.09	437238.16	39°41'42.4958"N	80°36'48.7112"W	14536.32	310.256	0.38	-0.03	0.38
22275.00	90.620	315.000	7402.05	14612.02	9447.50	-11147.01	1686611.69	437292.23	39°41'43.0236"N	80°36'49.4029"W	14612.02	310.283	0.95	-0.16	-0.93



REFERENCE WELLPATH IDENTIFICATION			
Operator	EQT PRODUCTION COMPANY	Well	Prine 3H (L-007058)
Field	Wetzel	API	47-103-03355-00-00
Facility	Prine Pad	Wellbore	Prine 3H (L-007058) AWB
Slot	Slot 03		

WELLPATH DATA (271 stations) † = interpolated, ‡ = extrapolated station															
MD [ft]	Inclination [°]	Azimuth [°]	TVD [ft]	Vert Sect [ft]	North [ft]	East [ft]	Grid East [US ft]	Grid North [US ft]	Latitude	Longitude	Closure Dist [ft]	Closure Dir [°]	DLS [°/100ft]	Build Rate [°/100ft]	Turn Rate [°/100ft]
22300.00‡	90.620	315.000	7401.78	14636.93	9465.18	-11164.68	1686594.02	437309.90	39°41'43.1961"N	80°36'49.6318"W	14636.93	310.291	0.00	0.00	0.00

HOLE & CASING SECTIONS - Ref Wellbore: Prine 3H (L-007058) AWB Ref Wellpath: Prine 3H (L-007058) AWP Proj: 22300'									
String/Diameter	Start MD [ft]	End MD [ft]	Interval [ft]	Start TVD [ft]	End TVD [ft]	Start N/S [ft]	Start E/W [ft]	End N/S [ft]	End E/W [ft]
17.5in Open Hole	28.00	1319.00	1291.00	28.00	1317.49	0.00	0.00	-41.48	16.24
13.375in Casing Surface	28.00	1319.00	1291.00	28.00	1317.49	0.00	0.00	-41.48	16.24
12.25in Open Hole	1319.00	2894.00	1575.00	1317.49	2891.41	-41.48	16.24	-65.75	21.53
9.625in Casing Intermediate	28.00	2894.00	2866.00	28.00	2891.41	0.00	0.00	-65.75	21.53
8.75in Open Hole	2894.00	6692.00	3798.00	2891.41	6561.44	-65.75	21.53	-847.89	-512.20
8.5in Open Hole	6692.00	22300.00	15608.00	6561.44	7401.78	-847.89	-512.20	9465.18	-11164.68
5.5in Casing Production	28.00	22300.00	22272.00	28.00	7401.78	0.00	0.00	9465.18	-11164.68

TARGETS								
Name	TVD [ft]	North [ft]	East [ft]	Grid East [US ft]	Grid North [US ft]	Latitude	Longitude	Shape
Prine 3H BHL Rev-1	7494.00	9469.79	-11161.64	1686597.06	437314.51	39°41'43.2420"N	80°36'49.5936"W	point
Prine 3H LP Rev-1	7494.00	-577.76	-1114.04	1696644.05	427267.57	39°40'5.1601"N	80°34'39.5259"W	point





Where energy meets innovation.

# Actual Wellpath Report

Prine 3H (L-007058) AWP Proj: 22300'

Page 12 of 13



## REFERENCE WELLPATH IDENTIFICATION

Operator	EQT PRODUCTION COMPANY	Well	Prine 3H (L-007058)
Field	Wetzel	API	47-103-03355-00-00
Facility	Prine Pad	Wellbore	Prine 3H (L-007058) AWB
Slot	Slot 03		

## WELLPATH COMPOSITION - Ref Wellbore: Prine 3H (L-007058) AWB Ref Wellpath: Prine 3H (L-007058) AWP Proj: 22300'

Start MD [ft]	End MD [ft]	Positional Uncertainty Model	Log Name/Comment	Wellbore	Survey Date
28.00	630.00	Gyrodata 2015 - CT+WIR+ALC	01 Gyrodata Cont Gyro <17-1/2">(115'-630')	Prine 3H (L-007058) AWB	2/18/2021
630.00	6915.00	OWSG MWD rev2 - Standard	02 SDI MWD <8-3/4">(630')(660'-6915')	Prine 3H (L-007058) AWB	2/18/2021
6915.00	22300.00	OWSG MWD rev2 + IFR1 + Multi-Station Correction	03 BH AT Curve + MagVAR MSA <8-1/2">(6915')(6976'-22275')	Prine 3H (L-007058) AWB	4/9/2021





Where energy meets innovation.

# Actual Wellpath Report

Prine 3H (L-007058) AWP Proj: 22300'

Page 13 of 13



REFERENCE WELLPATH IDENTIFICATION			
Operator	EQT PRODUCTION COMPANY	Well	Prine 3H (L-007058)
Field	Wetzel	API	47-103-03355-00-00
Facility	Prine Pad	Wellbore	Prine 3H (L-007058) AWB
Slot	Slot 03		

## COMMENTS

### Wellpath general comments

API: 47-103-03355-0000

BH Job #: 110826421

Rig: Patterson 292

Duration: 4/10/21 - 4/13/21

Gyrodata Cont Gyro <17-1/2">(115'-630')

SDI MWD <8-3/4">(630')(660'-6915')

BH AT Curve + MagVAR MSA <8-1/2">(6915')(6976'-22275')

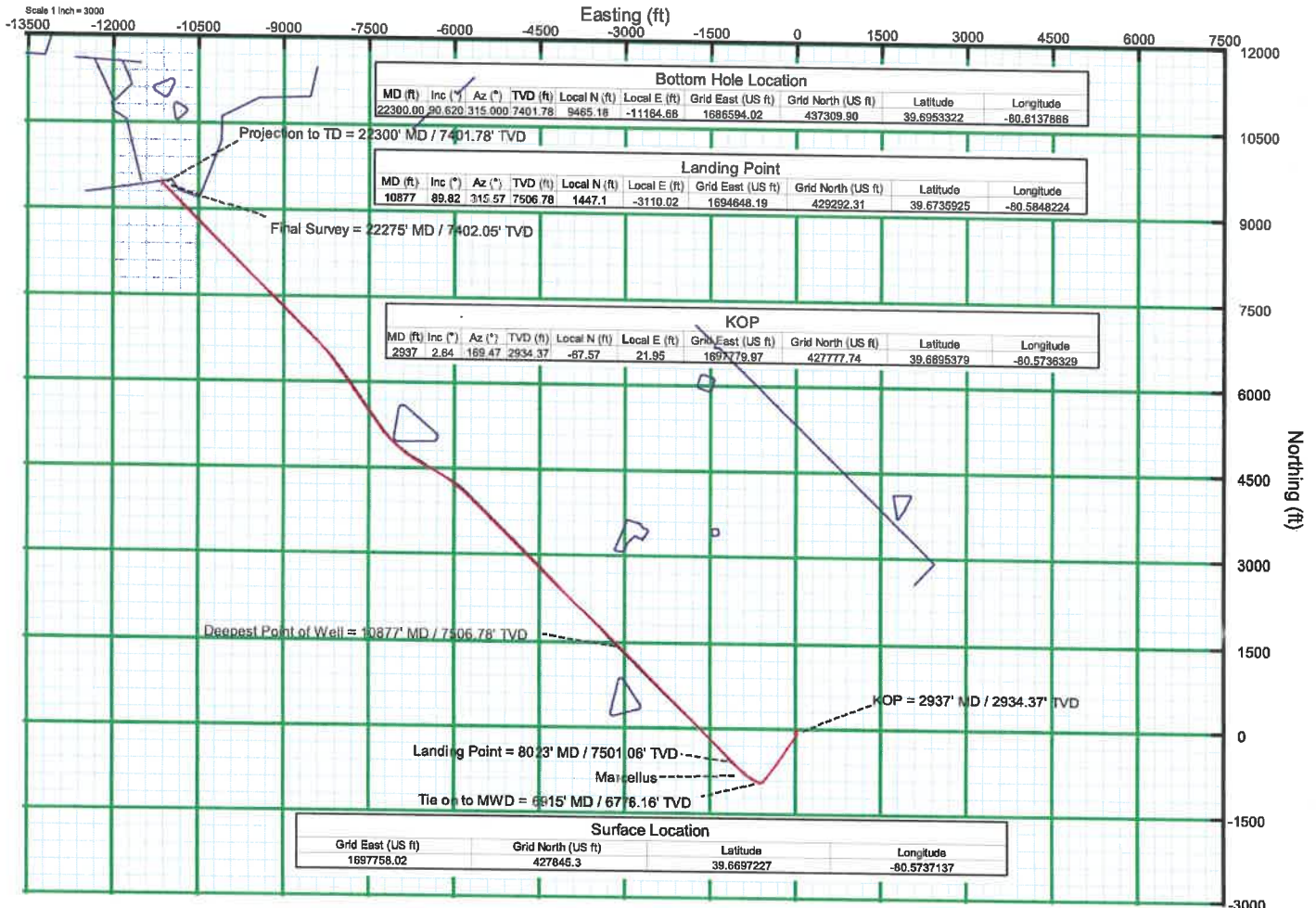
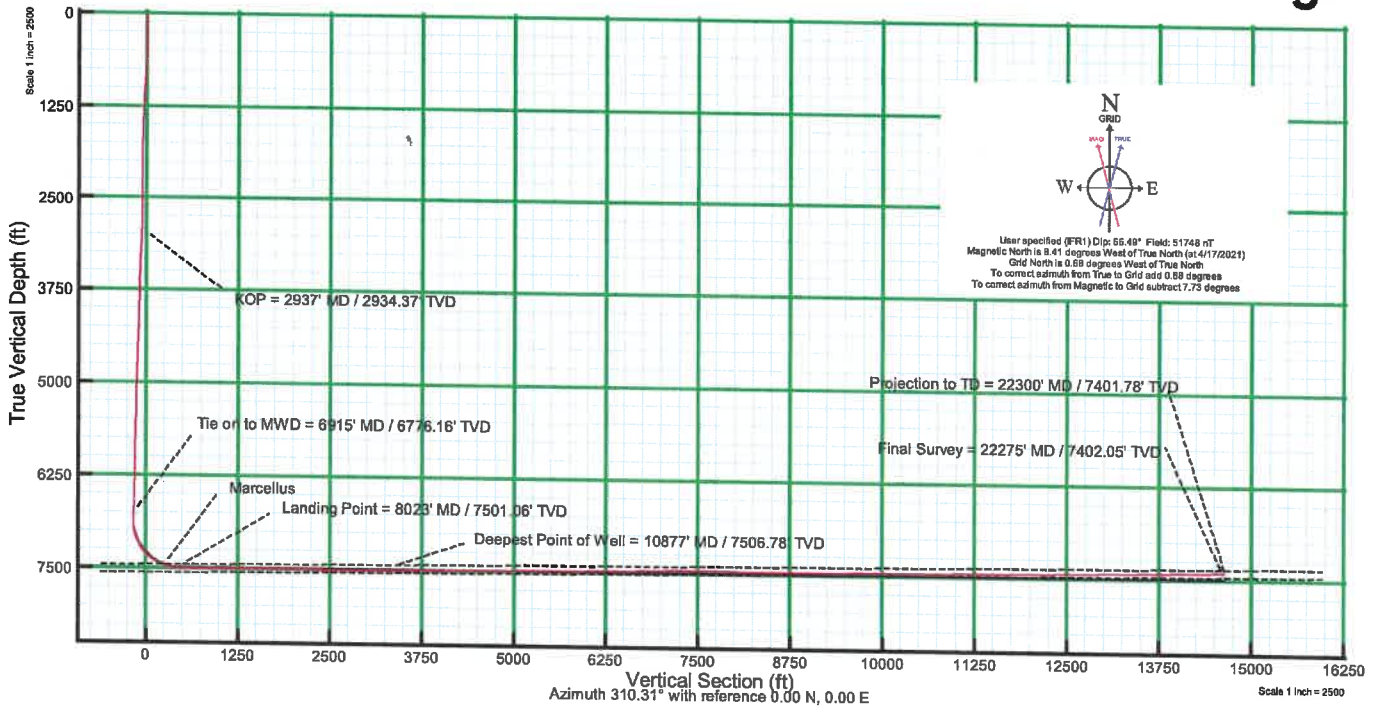
Projected MD at TD: 22300'





Where energy meets innovation.

KB elevation = 1364 ft  
 Ground elevation = 1336 ft  
 All measurements taken from KB elevation



09/09/2022