

WW-7
8-30-06



West Virginia Department of Environmental Protection
Office of Oil and Gas

WELL LOCATION FORM: GPS

API: 47-103-03375 WELL NO.: 7490

FARM NAME: G.W. PRICE

RESPONSIBLE PARTY NAME: WEST VIRGINIA LAND RESOURCES INC.

COUNTY: WETZEL DISTRICT: GRANT

QUADRANGLE: GLOVER GAP W.VA

SURFACE OWNER: BRIAN E. HIGGINS

ROYALTY OWNER: _____

UTM GPS NORTHING: 4,372,750 m (1479')

UTM GPS EASTING: 543,610 m GPS ELEVATION: 451 m

The Responsible Party named above has chosen to submit GPS coordinates in lieu of preparing a new well location plat for a plugging permit or assigned API number on the above well. The Office of Oil and Gas will not accept GPS coordinates that do not meet the following requirements:

1. Datum: NAD 1983, Zone: 17 North, Coordinate Units: meters, Altitude: height above mean sea level (MSL) – meters.
2. Accuracy to Datum – 3.05 meters
3. Data Collection Method:

Survey grade GPS _____: Post Processed Differential _____

Real-Time Differential _____

Mapping Grade GPS X: Post Processed Differential X

Real-Time Differential _____

4. **Letter size copy of the topography map showing the well location.**

I the undersigned, hereby certify this data is correct to the best of my knowledge and belief and shows all the information required by law and the regulations issued and prescribed by the Office of Oil and Gas.

Professional Surveyor

FEBRUARY 3, 2021

Signature

Title

Date

RECEIVED
Office of Oil and Gas

FEB 24 2021

WV Department of
Environmental Protection

47-103 - 03375P

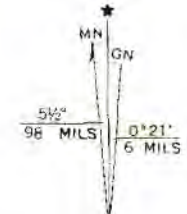
32'30"
376
375
374
370 000
FEET
39'30"
80'30"



 **WELL #7490**

Mapped, edited, and published by the Geological Survey
Control by USGS and USC&GS
Topography from aerial photographs by photogrammetric methods
Aerial photographs taken 1957. Field check 1960
Polyconic projection. 1927 North American datum
10,000-foot grid based on West Virginia coordinate system,
north zone

RECEIVED
Office of Oil and Gas
FEB 24 2021
WV Department of
Environmental Protection



'Glover Gap; WV' Scale: 1" = 0.379Mi 610M 2,000Ft, 1 Mi = 2.640", 1 cm = 240M

(FOLSOM)
48827 NE

GLO

Well# 7490

GLOVER GAP WV 7.5' Quad
Scale: 1" = 500'



1500



Well# 7490

1000

1100

RECEIVED
Office of Oil and Gas
FEB 24 2021 X 136
WV Department of
Environmental Protection

1200

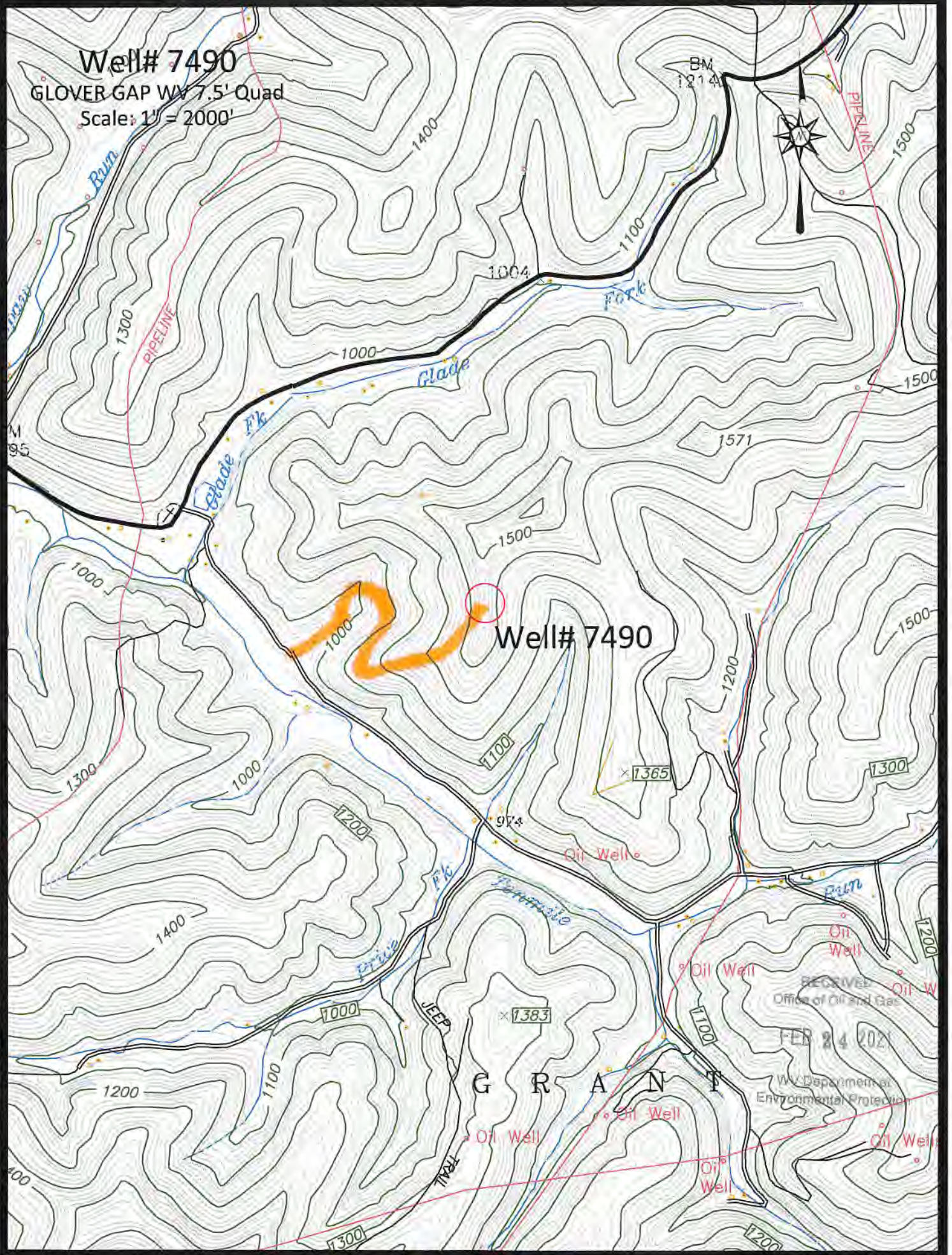
974

Oil Well

Access Road



Well# 7490
GLOVER GAP WY 7.5' Quad
Scale: 1" = 2000'



Access Road