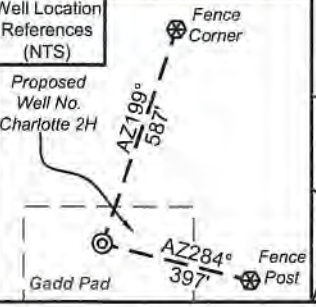
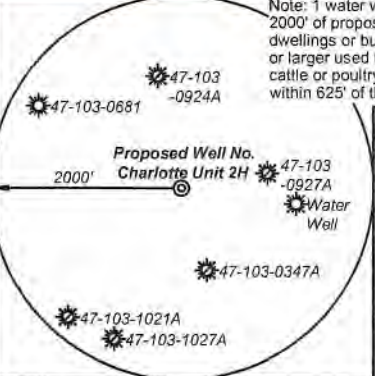


Antero Resources
Well No. Charlotte 2H
 Antero Resources Corporation



I, the undersigned, hereby certify that this plat is correct to the best of my knowledge and belief and shows all the information required by law and the rules issued and prescribed by the Department of Environmental Protection.

Bradley D. Miller
 Bradley D. Miller, P.S. 2167



Legend

- Proposed gas well
- Monument, as noted
- Existing Well, as noted
- Digitized Well, as noted
- Creek or Drain
- Road
- Surface boundary (approx.)
- Interior surface tracts (approx.)
- Railroad

1,312' to Bottom Hole

1,605' to Top Hole

TOP HOLE LATITUDE 39 - 35 - 00
 BTM HOLD LATITUDE 39 - 32 - 30

BTM Hole
 7.5' Spot

LONGITUDE 80 - 45 - 00

1,545' to Bottom Hole

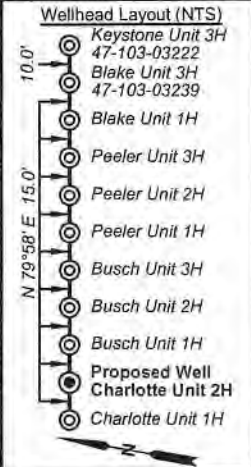
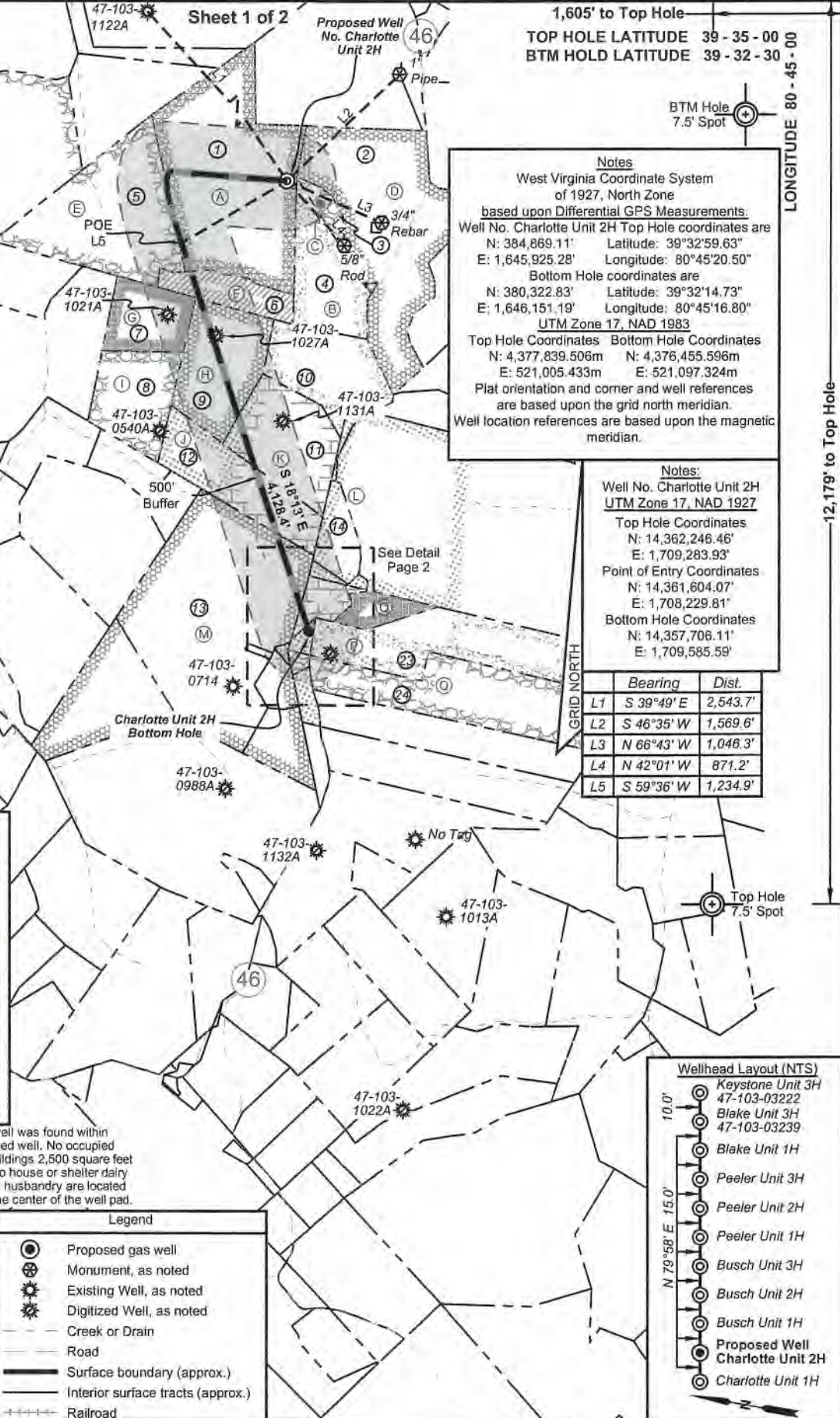
12,179' to Top Hole

Notes
 West Virginia Coordinate System of 1927, North Zone based upon Differential GPS Measurements.
 Well No. Charlotte Unit 2H Top Hole coordinates are
 N: 384,869.11' Latitude: 39°32'59.63"
 E: 1,645,925.28' Longitude: 80°45'20.50"
 Bottom Hole coordinates are
 N: 380,322.83' Latitude: 39°32'14.73"
 E: 1,646,151.19' Longitude: 80°45'16.80"
 UTM Zone 17, NAD 1983
 Top Hole Coordinates Bottom Hole Coordinates
 N: 4,377,839.506m N: 4,376,455.596m
 E: 521,005.433m E: 521,097.324m
 Plat orientation and corner and well references are based upon the grid north meridian.
 Well location references are based upon the magnetic meridian.

Notes:
 Well No. Charlotte Unit 2H UTM Zone 17, NAD 1927
 Top Hole Coordinates
 N: 14,362,246.46'
 E: 1,709,283.93'
 Point of Entry Coordinates
 N: 14,361,604.07'
 E: 1,708,229.81'
 Bottom Hole Coordinates
 N: 14,357,706.11'
 E: 1,709,585.59'

	Bearing	Dist.
L1	S 39°49' E	2,543.7'
L2	S 46°35' W	1,569.6'
L3	N 66°43' W	1,046.3'
L4	N 42°01' W	871.2'
L5	S 59°36' W	1,234.9'

GRID NORTH



FILE NO: 323-34-G-17
 DRAWING NO: Charlotte 2H Well Plat
 SCALE: 1" = 1500'
 MINIMUM DEGREE OF ACCURACY: Submeter
 PROVEN SOURCE OF ELEVATION: CORS, Monroe County, OH

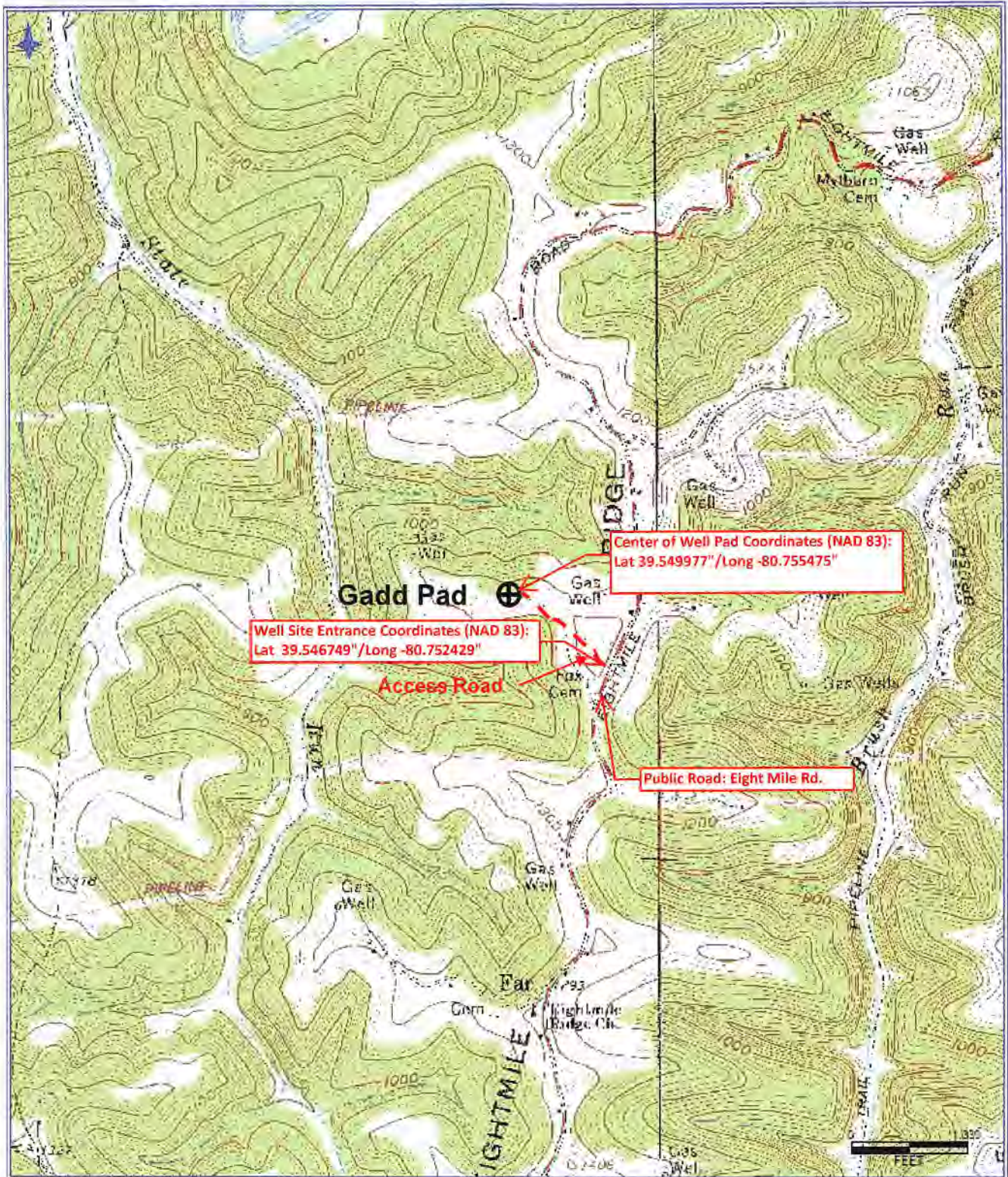
STATE OF WEST VIRGINIA
 DEPARTMENT OF ENVIRONMENTAL PROTECTION
 OIL AND GAS DIVISION

DATE: April 28 2021
 OPERATOR'S WELL NO. Charlotte Unit 2H
 API WELL NO
 47 - 103 - 03408
 STATE COUNTY PERMIT

WELL TYPE: OIL GAS LIQUID INJECTION WASTE DISPOSAL
 (IF GAS) PRODUCTION: STORAGE DEEP SHALLOW

LOCATION: ELEVATION: As-Built 1,223.8' WATERSHED: Fishing Creek QUADRANGLE: Porter Falls
 DISTRICT: Green William L. & SURFACE OWNER: Delores J. Gadd Chesapeake Appalachia, LLC
 Harry K. Eastman, et ux; Eight Mile Ridge Church of Christ; Susie T. Grimm; Thomas M. Stackhouse; Richard L. Tennant;
 ROYALTY OWNER: Shiben Estates, Inc.; Glady E. Conley Trust; Sandra Rose Conley; Michael Tennant; LEASE NO: ACREAGE: 60.5
 60.5; 119.03125; 12; 23.4733; 35; 4.68750; 0.23750; 0.90625; 105
 PROPOSED WORK: DRILL CONVERT DRILL DEEPER FRACTURE OR STIMULATE PLUG OFF OLD FORMATION
 PERFORATE NEW FORMATION OTHER PHYSICAL CHANGE IN WELL (SPECIFY)
 PLUG AND ABANDON CLEAN OUT AND REPLUG TARGET FORMATION: Marcellus Shale ESTIMATED DEPTH: 7,500' TVD 14,000' MD

WELL OPERATOR: Antero Resources Corporation DESIGNATED AGENT: Dianna Stamper - CT Corporation System
 ADDRESS: 1615 Wynkoop Street ADDRESS: 5400 D Big Tyler Road
 Denver, CO 80202 Charleston, WV 25313



Antero Resources Corporation
 Appalachian Basin
GADD PAD
 Wetzel County

Quadrangle: Porters Falls
 Watershed: Fishing Creek
 District: Green
 Date: 5-3-2021