



Actual Wellpath Report

Michael Kuhn 14H AWP Proj: 23726'

Page 1 of 14



REFERENCE WELLPATH IDENTIFICATION

Operator	EQT PRODUCTION COMPANY	Well	Michael Kuhn 14H (L-003962)
Field	Wetzel	API/Legal	
Facility	Big 467 Pad	Wellbore	Michael Kuhn 14H AWB
Slot	Slot 14H		

REPORT SETUP INFORMATION

Projection System	NAD27 / Lambert West Virginia SP, Northern Zone (4701), US feet	Software System	WellArchitect® 6.0
North Reference	Grid	User	Manajohj
Scale	0.999941	Report Generated	3/16/2022 at 10:19:43 PM
Convergence at slot	0.66° West	Database	WA_MPL_EASTERNUS_Defn

WELLPATH LOCATION

	Local coordinates		Grid coordinates		Geographic coordinates	
	North[ft]	East[ft]	Easting[US ft]	Northing[US ft]	Latitude	Longitude
Slot Location	-34.10	101.81	1709537.31	407819.79	39°36'54.4524"N	80°31'51.7984"W
Facility Reference Pt			1709435.51	407853.89	39°36'54.7779"N	80°31'53.1042"W
Field Reference Pt			1688243.35	385255.46	39°33'8.9436"N	80°36'20.3370"W

WELLPATH DATUM

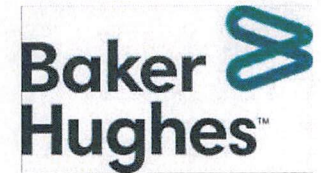
Calculation method	Minimum curvature	Patterson 294 (RKB) to Facility Vertical Datum	1536.00ft
Horizontal Reference Pt	Slot	Patterson 294 (RKB) to Mean Sea Level	1536.00ft
Vertical Reference Pt	Patterson 294 (RKB)	Patterson 294 (RKB) to Ground Level at Slot (Slot 14H)	28.00ft
MD Reference Pt	Patterson 294 (RKB)	Section Origin	N 0.00, E 0.00 ft
Field Vertical Reference	Mean Sea Level	Section Azimuth	137.75°

RECEIVED
 Office of Oil and Gas
 JUL 31 2023
 WV Department of
 Environmental Protection



Actual Wellpath Report

Michael Kuhn 14H AWP Proj: 23726'
Page 2 of 14



REFERENCE WELLPATH IDENTIFICATION			
Operator	EQT PRODUCTION COMPANY	Well	Michael Kuhn 14H (L-003962)
Field	Wetzel	API/Legal	
Facility	Big 467 Pad	Wellbore	Michael Kuhn 14H AWB
Slot	Slot 14H		

WELLPATH DATA (265 stations) † = interpolated, ‡ = extrapolated station															
MD [ft]	Inclination [°]	Azimuth [°]	TVD [ft]	Vert Sect [ft]	North [ft]	East [ft]	Grid East [US ft]	Grid North [US ft]	Latitude	Longitude	Closure Dist [ft]	Closure Dir [°]	DLS [°/100ft]	Build Rate [°/100ft]	Turn Rate [°/100ft]
0.00†	0.000	262.500	0.00	0.00	0.00	0.00	1709537.31	407819.79	39°36'54.4524"N	80°31'51.7984"W	0.00	0.000	0.00	0.00	0.00
28.00	0.000	262.500	28.00	0.00	0.00	0.00	1709537.31	407819.79	39°36'54.4524"N	80°31'51.7984"W	0.00	0.000	0.00	0.00	0.00
115.00	0.390	262.500	115.00	-0.17	-0.04	-0.29	1709537.02	407819.75	39°36'54.4520"N	80°31'51.8022"W	0.30	262.500	0.45	0.45	0.00
215.00	0.390	259.380	215.00	-0.54	-0.15	-0.97	1709536.34	407819.64	39°36'54.4509"N	80°31'51.8107"W	0.98	261.413	0.02	0.00	-3.12
315.00	0.370	268.040	314.99	-0.93	-0.22	-1.62	1709535.69	407819.57	39°36'54.4500"N	80°31'51.8191"W	1.64	262.294	0.06	-0.02	8.66
415.00	0.260	281.500	414.99	-1.32	-0.19	-2.17	1709535.14	407819.60	39°36'54.4503"N	80°31'51.8261"W	2.18	265.112	0.13	-0.11	13.46
515.00	0.260	281.870	514.99	-1.69	-0.09	-2.61	1709534.70	407819.70	39°36'54.4512"N	80°31'51.8318"W	2.61	267.951	0.00	0.00	0.37
615.00	0.240	291.720	614.99	-2.06	0.03	-3.03	1709534.28	407819.82	39°36'54.4524"N	80°31'51.8371"W	3.03	270.581	0.05	-0.02	9.85
715.00	0.170	295.770	714.99	-2.38	0.17	-3.36	1709533.95	407819.96	39°36'54.4537"N	80°31'51.8413"W	3.36	272.945	0.07	-0.07	4.05
815.00	0.100	326.190	814.99	-2.61	0.31	-3.54	1709533.77	407820.10	39°36'54.4551"N	80°31'51.8437"W	3.55	275.002	0.10	-0.07	30.42
915.00	0.110	285.510	914.99	-2.78	0.41	-3.68	1709533.63	407820.20	39°36'54.4560"N	80°31'51.8455"W	3.70	276.325	0.07	0.01	-40.68
1015.00	0.080	71.640	1014.99	-2.83	0.46	-3.71	1709533.60	407820.25	39°36'54.4565"N	80°31'51.8458"W	3.73	277.007	0.18	-0.03	146.13
1115.00	0.090	279.260	1114.99	-2.86	0.49	-3.72	1709533.59	407820.28	39°36'54.4568"N	80°31'51.8460"W	3.75	277.512	0.17	0.01	-152.38
1215.00	0.170	314.370	1214.99	-3.07	0.61	-3.90	1709533.41	407820.40	39°36'54.4580"N	80°31'51.8483"W	3.95	278.838	0.11	0.08	35.11
1315.00	0.330	338.390	1314.99	-3.49	0.98	-4.11	1709533.20	407820.77	39°36'54.4616"N	80°31'51.8511"W	4.23	283.375	0.19	0.16	24.02
1320.00	0.330	335.280	1319.99	-3.52	1.00	-4.12	1709533.19	407820.79	39°36'54.4619"N	80°31'51.8513"W	4.25	283.688	0.36	0.00	-62.20
1387.00	0.300	0.880	1386.99	-3.83	1.36	-4.20	1709533.11	407821.15	39°36'54.4653"N	80°31'51.8523"W	4.42	287.872	0.21	-0.04	38.21
1431.00	0.180	41.330	1430.99	-3.92	1.52	-4.16	1709533.16	407821.31	39°36'54.4670"N	80°31'51.8517"W	4.43	290.120	0.46	-0.27	91.93
1474.00	0.480	129.190	1473.99	-3.75	1.46	-3.97	1709533.34	407821.25	39°36'54.4664"N	80°31'51.8494"W	4.23	290.176	1.18	0.70	204.33
1517.00	1.380	144.520	1516.98	-3.06	0.92	-3.53	1709533.78	407820.71	39°36'54.4611"N	80°31'51.8437"W	3.65	284.660	2.15	2.09	35.65
1560.00	2.350	149.170	1559.96	-1.68	-0.26	-2.78	1709534.53	407819.54	39°36'54.4496"N	80°31'51.8339"W	2.79	264.756	2.28	2.26	10.81
1646.00	3.050	155.780	1645.86	2.22	-3.86	-0.94	1709536.37	407815.93	39°36'54.4142"N	80°31'51.8098"W	3.97	193.649	0.89	0.81	7.69
1732.00	3.380	164.360	1731.73	6.67	-8.38	0.69	1709538.00	407811.41	39°36'54.3696"N	80°31'51.7884"W	8.41	175.323	0.68	0.38	9.98
1818.00	4.010	170.930	1817.55	11.45	-13.79	1.84	1709539.15	407806.00	39°36'54.3163"N	80°31'51.7728"W	13.92	172.389	0.88	0.73	7.64
1905.00	3.840	173.070	1904.34	16.37	-19.69	2.67	1709539.98	407800.10	39°36'54.2581"N	80°31'51.7613"W	19.87	172.265	0.26	-0.20	2.46
1991.00	2.650	174.680	1990.20	20.31	-24.53	3.21	1709540.52	407795.26	39°36'54.2104"N	80°31'51.7538"W	24.74	172.553	1.39	-1.38	1.87
2077.00	2.320	162.370	2076.12	23.48	-28.17	3.92	1709541.23	407791.62	39°36'54.1745"N	80°31'51.7442"W	28.44	172.082	0.73	-0.38	-14.31
2164.00	2.550	149.650	2163.05	26.98	-31.52	5.43	1709542.74	407788.28	39°36'54.1416"N	80°31'51.7244"W	31.98	170.226	0.67	0.26	-14.62
2250.00	2.640	151.200	2248.96	30.78	-34.90	7.35	1709544.66	407784.89	39°36'54.1083"N	80°31'51.6994"W	35.67	168.108	0.13	0.10	1.80
2336.00	1.640	148.890	2334.90	33.91	-37.69	8.94	1709546.25	407782.10	39°36'54.0809"N	80°31'51.6787"W	38.74	166.657	1.17	-1.16	-2.69

RECEIVED
 Office of Oil and Gas
 JUL 31 2023
 Environmental Protection Department of



Actual Wellpath Report

Michael Kuhn 14H AWP Proj: 23726'

Page 3 of 14



REFERENCE WELLPATH IDENTIFICATION

Operator	EQT PRODUCTION COMPANY	Well	Michael Kuhn 14H (L-003962)
Field	Wetzel	API/Legal	
Facility	Big 467 Pad	Wellbore	Michael Kuhn 14H AWB
Slot	Slot 14H		

WELLPATH DATA (265 stations)

MD [ft]	Inclination [°]	Azimuth [°]	TVD [ft]	Vert Sect [ft]	North [ft]	East [ft]	Grid East [US ft]	Grid North [US ft]	Latitude	Longitude	Closure Dist [ft]	Closure Dir [°]	DLS [°/100ft]	Build Rate [°/100ft]	Turn Rate [°/100ft]
2423.00	0.620	137.480	2421.88	35.60	-39.10	9.90	1709547.21	407780.69	39°36'54.0671"N	80°31'51.6662"W	40.34	165.791	1.19	-1.17	-13.11
2509.00	0.580	69.710	2507.88	36.23	-39.30	10.62	1709547.93	407780.50	39°36'54.0653"N	80°31'51.6569"W	40.71	164.871	0.78	-0.05	-78.80
2595.00	1.330	97.700	2593.86	37.16	-39.28	12.02	1709549.33	407780.51	39°36'54.0656"N	80°31'51.6391"W	41.08	162.983	1.00	0.87	32.55
2681.00	2.490	123.300	2679.82	39.73	-40.44	14.57	1709551.88	407779.35	39°36'54.0544"N	80°31'51.6063"W	42.98	160.183	1.64	1.35	29.77
2768.00	3.460	127.750	2766.70	44.15	-43.08	18.23	1709555.54	407776.71	39°36'54.0287"N	80°31'51.5592"W	46.78	157.068	1.15	1.11	5.11
2798.00	3.620	126.550	2796.64	45.97	-44.20	19.70	1709557.01	407775.59	39°36'54.0178"N	80°31'51.5402"W	48.39	155.974	0.59	0.53	-4.00
2897.00	4.190	127.620	2895.41	52.59	-48.27	25.08	1709562.39	407771.52	39°36'53.9782"N	80°31'51.4709"W	54.40	152.545	0.58	0.58	1.08
2940.00	4.010	128.600	2938.30	55.62	-50.17	27.50	1709564.81	407769.63	39°36'53.9597"N	80°31'51.4397"W	57.21	151.271	0.45	-0.42	2.28
2983.00	3.380	109.630	2981.21	58.23	-51.53	29.87	1709567.18	407768.26	39°36'53.9465"N	80°31'51.4092"W	59.56	149.903	3.18	-1.47	-44.12
3026.00	2.980	81.210	3024.15	59.96	-51.79	32.17	1709569.47	407768.01	39°36'53.9443"N	80°31'51.3798"W	60.96	148.154	3.74	-0.93	-66.09
3069.00	3.360	64.440	3067.08	60.94	-51.07	34.41	1709571.72	407768.72	39°36'53.9516"N	80°31'51.3513"W	61.58	146.031	2.32	0.88	-39.00
3112.00	3.910	65.920	3110.00	61.76	-49.93	36.88	1709574.19	407769.86	39°36'53.9632"N	80°31'51.3198"W	62.08	143.547	1.30	1.28	3.44
3155.00	4.380	67.850	3152.88	62.78	-48.71	39.74	1709577.05	407771.08	39°36'53.9755"N	80°31'51.2835"W	62.87	140.791	1.14	1.09	4.49
3198.00	4.840	67.310	3195.74	63.95	-47.39	42.94	1709580.24	407772.40	39°36'53.9889"N	80°31'51.2429"W	63.95	137.825	1.07	1.07	-1.26
3241.00	5.010	67.410	3238.59	65.19	-45.97	46.34	1709583.65	407773.82	39°36'54.0033"N	80°31'51.1995"W	65.28	134.770	0.40	0.40	0.23
3284.00	5.780	66.180	3281.39	66.51	-44.38	50.06	1709587.37	407775.42	39°36'54.0195"N	80°31'51.1523"W	66.90	131.557	1.81	1.79	-2.86
3327.00	7.620	65.620	3324.10	68.07	-42.33	54.64	1709591.94	407777.47	39°36'54.0403"N	80°31'51.0941"W	69.11	127.764	4.28	4.28	-1.30
3370.00	9.180	65.340	3366.64	69.98	-39.72	60.35	1709597.66	407780.07	39°36'54.0667"N	80°31'51.0215"W	72.25	123.349	3.63	3.63	-0.65
3457.00	10.900	58.300	3452.30	73.58	-32.50	73.66	1709610.96	407787.29	39°36'54.1396"N	80°31'50.8525"W	80.51	113.808	2.43	1.98	-8.09
3543.00	12.250	54.820	3536.55	76.19	-22.97	88.03	1709625.34	407796.82	39°36'54.2354"N	80°31'50.6702"W	90.98	104.623	1.77	1.57	-4.05
3629.00	13.450	53.630	3620.40	78.34	-11.78	103.54	1709640.85	407808.01	39°36'54.3477"N	80°31'50.4737"W	104.21	96.491	1.43	1.40	-1.38
3715.00	14.640	54.220	3703.83	80.59	0.50	120.42	1709657.72	407820.29	39°36'54.4710"N	80°31'50.2599"W	120.42	89.760	1.39	1.38	0.69
3801.00	15.230	56.310	3786.92	83.50	13.12	138.63	1709675.93	407832.91	39°36'54.5978"N	80°31'50.0290"W	139.25	84.592	0.93	0.69	2.43
3887.00	17.110	56.510	3869.52	87.10	26.37	158.58	1709695.88	407846.16	39°36'54.7310"N	80°31'49.7761"W	160.76	80.558	2.19	2.19	0.23
3973.00	20.270	57.420	3950.97	91.53	41.38	181.69	1709718.99	407861.17	39°36'54.8819"N	80°31'49.4830"W	186.34	77.170	3.69	3.67	1.06
4060.00	22.480	54.930	4031.98	96.15	59.05	208.01	1709745.31	407878.84	39°36'55.0596"N	80°31'49.1493"W	216.23	74.151	2.75	2.54	-2.86
4146.00	24.920	53.320	4110.73	99.96	79.33	236.00	1709773.30	407899.11	39°36'55.2631"N	80°31'48.7947"W	248.97	71.421	2.94	2.84	-1.87
4232.00	26.310	52.100	4188.27	103.16	101.86	265.57	1709802.86	407921.64	39°36'55.4891"N	80°31'48.4201"W	284.43	69.016	1.73	1.62	-1.42
4319.00	27.650	49.990	4265.80	105.42	126.68	296.25	1709833.54	407946.46	39°36'55.7379"N	80°31'48.0318"W	322.20	66.848	1.89	1.54	-2.43
4405.00	30.050	46.910	4341.13	105.88	154.23	327.26	1709864.55	407974.01	39°36'56.0136"N	80°31'47.6395"W	361.78	64.767	3.28	2.79	-3.58

RECEIVED
 Office of Oil and Gas
 JUL 31 2023
 WV Department of Environmental Protection



Actual Wellpath Report

Michael Kuhn 14H AWP Proj: 23726'

Page 4 of 14



REFERENCE WELLPATH IDENTIFICATION			
Operator	EQT PRODUCTION COMPANY	Well	Michael Kuhn 14H (L-003962)
Field	Wetzel	API/Legal	
Facility	Big 467 Pad	Wellbore	Michael Kuhn 14H AWB
Slot	Slot 14H		

WELLPATH DATA (265 stations)															
MD [ft]	Inclination [°]	Azimuth [°]	TVD [ft]	Vert Sect [ft]	North [ft]	East [ft]	Grid East [US ft]	Grid North [US ft]	Latitude	Longitude	Closure Dist [ft]	Closure Dir [°]	DLS [°/100ft]	Build Rate [°/100ft]	Turn Rate [°/100ft]
4491.00	31.680	47.340	4414.95	105.40	184.24	359.60	1709896.89	408004.02	39°36'56.3139"N	80°31'47.2308"W	404.05	62.871	1.91	1.90	0.50
4576.00	32.950	43.830	4486.79	103.66	216.05	392.02	1709929.31	408035.82	39°36'56.6319"N	80°31'46.8212"W	447.61	61.141	2.67	1.49	-4.13
4662.00	34.000	46.180	4558.52	101.40	249.57	425.57	1709962.86	408069.34	39°36'56.9670"N	80°31'46.3974"W	493.35	59.611	1.94	1.22	2.73
4748.00	33.700	45.410	4629.95	99.77	282.97	459.91	1709997.19	408102.74	39°36'57.3010"N	80°31'45.9635"W	539.99	58.397	0.61	-0.35	-0.90
4835.00	33.520	47.190	4702.40	98.55	316.24	494.72	1710032.00	408136.01	39°36'57.6337"N	80°31'45.5236"W	587.16	57.412	1.15	-0.21	2.05
4921.00	34.540	46.840	4773.68	97.93	349.05	529.93	1710067.21	408168.82	39°36'57.9620"N	80°31'45.0786"W	634.56	56.628	1.21	1.19	-0.41
4998.00	35.100	46.730	4836.89	97.19	379.16	561.97	1710099.25	408198.92	39°36'58.2631"N	80°31'44.6736"W	677.92	55.993	0.73	0.73	-0.14
5084.00	36.230	49.730	4906.76	97.63	412.54	599.37	1710136.64	408232.30	39°36'58.5972"N	80°31'44.2006"W	727.62	55.461	2.42	1.31	3.49
5170.00	37.780	51.470	4975.44	100.22	445.38	639.37	1710176.64	408265.14	39°36'58.9263"N	80°31'43.6943"W	779.20	55.140	2.18	1.80	2.02
5257.00	39.950	52.950	5043.18	104.48	478.81	682.52	1710219.79	408298.57	39°36'59.2616"N	80°31'43.1479"W	833.72	54.949	2.71	2.49	1.70
5342.00	40.110	53.700	5108.26	109.79	511.46	726.37	1710263.63	408331.22	39°36'59.5892"N	80°31'42.5924"W	888.37	54.849	0.60	0.19	0.88
5428.00	40.620	52.670	5173.79	115.06	544.84	770.95	1710308.22	408364.60	39°36'59.9241"N	80°31'42.0276"W	944.05	54.751	0.98	0.59	-1.20
5514.00	40.710	51.620	5239.03	119.36	579.23	815.20	1710352.46	408398.99	39°37'0.2690"N	80°31'41.4673"W	1000.03	54.605	0.80	0.10	-1.22
5601.00	40.030	52.290	5305.31	123.49	613.96	859.58	1710396.83	408433.71	39°37'0.6172"N	80°31'40.9053"W	1056.32	54.463	0.93	-0.78	0.77
5687.00	39.300	51.740	5371.51	127.57	647.74	902.84	1710440.10	408467.49	39°37'0.9560"N	80°31'40.3575"W	1111.17	54.343	0.94	-0.85	-0.64
5773.00	38.740	48.940	5438.33	130.02	682.29	944.52	1710481.77	408502.03	39°37'1.3021"N	80°31'39.8300"W	1165.18	54.157	2.15	-0.65	-3.26
5859.00	38.170	48.000	5505.68	130.70	717.74	984.56	1710521.81	408537.49	39°37'1.6570"N	80°31'39.3236"W	1218.41	53.908	0.95	-0.66	-1.09
5946.00	37.470	48.750	5574.40	131.28	753.18	1024.44	1710561.68	408572.92	39°37'2.0117"N	80°31'38.8192"W	1271.51	53.676	0.96	-0.80	0.86
6032.00	37.380	49.620	5642.70	132.59	787.34	1063.99	1710601.23	408607.08	39°37'2.3538"N	80°31'38.3188"W	1323.62	53.499	0.62	-0.10	1.01
6118.00	37.940	48.870	5710.78	133.96	821.64	1103.79	1710641.03	408641.38	39°37'2.6973"N	80°31'37.8153"W	1376.03	53.337	0.84	0.65	-0.87
6205.00	38.180	48.370	5779.28	134.77	857.10	1144.03	1710681.27	408676.84	39°37'3.0522"N	80°31'37.3063"W	1429.49	53.160	0.45	0.28	-0.57
6291.00	39.020	49.820	5846.49	136.03	892.22	1184.59	1710721.82	408711.96	39°37'3.4039"N	80°31'36.7933"W	1483.01	53.013	1.44	0.98	1.69
6377.00	40.130	50.030	5912.78	138.11	927.50	1226.51	1710763.75	408747.23	39°37'3.7572"N	80°31'36.2627"W	1537.72	52.903	1.30	1.29	0.24
6463.00	39.510	48.610	5978.84	139.63	963.39	1268.28	1710805.51	408783.12	39°37'4.1166"N	80°31'35.7343"W	1592.68	52.780	1.28	-0.72	-1.65
6550.00	38.880	48.400	6046.26	140.35	999.82	1309.46	1710846.69	408819.54	39°37'4.4813"N	80°31'35.2134"W	1647.52	52.637	0.74	-0.72	-0.24
6636.00	38.830	48.820	6113.23	141.16	1035.49	1349.93	1710887.16	408855.21	39°37'4.8384"N	80°31'34.7014"W	1701.34	52.509	0.31	-0.06	0.49
6722.00	38.720	49.110	6180.28	142.30	1070.85	1390.56	1710927.78	408890.57	39°37'5.1924"N	80°31'34.1875"W	1755.10	52.401	0.25	-0.13	0.34
6809.00	37.770	50.700	6248.61	144.32	1105.54	1431.75	1710968.97	408925.26	39°37'5.5399"N	80°31'33.6663"W	1808.90	52.326	1.57	-1.09	1.83
6895.00	37.720	49.400	6316.61	146.43	1139.34	1472.10	1711009.32	408959.06	39°37'5.8785"N	80°31'33.1555"W	1861.50	52.262	0.93	-0.06	-1.51
6981.00	37.260	50.480	6384.85	148.43	1173.03	1512.16	1711049.38	408992.74	39°37'6.2159"N	80°31'32.6486"W	1913.80	52.198	0.93	-0.53	1.26

RECEIVED
 Office of Oil and Gas
 JUL 31 2023
 WV Department of
 Environmental Protection



Actual Wellpath Report

Michael Kuhn 14H AWP Proj: 23726'

Page 5 of 14



REFERENCE WELLPATH IDENTIFICATION			
Operator	EQT PRODUCTION COMPANY	Well	Michael Kuhn 14H (L-003962)
Field	Wetzel	API/Legal	
Facility	Big 467 Pad	Wellbore	Michael Kuhn 14H AWB
Slot	Slot 14H		

WELLPATH DATA (265 stations)

MD [ft]	Inclination [°]	Azimuth [°]	TVD [ft]	Vert Sect [ft]	North [ft]	East [ft]	Grid East [US ft]	Grid North [US ft]	Latitude	Longitude	Closure Dist [ft]	Closure Dir [°]	DLS [°/100ft]	Build Rate [°/100ft]	Turn Rate [°/100ft]
7067.00	36.310	49.380	6453.73	150.40	1206.17	1551.57	1711088.79	409025.89	39°37'6.5479"N	80°31'32.1499"W	1965.25	52.139	1.34	-1.10	-1.28
7145.00	35.780	46.560	6516.80	150.58	1236.89	1585.66	1711122.87	409056.60	39°37'6.8553"N	80°31'31.7188"W	2011.02	52.044	2.23	-0.68	-3.62
7231.00	36.560	47.080	6586.22	149.76	1271.62	1622.67	1711159.88	409091.33	39°37'7.2027"N	80°31'31.2509"W	2061.57	51.916	0.97	0.91	0.60
7448.00	34.970	40.840	6762.35	141.52	1362.71	1710.70	1711247.91	409182.42	39°37'8.1129"N	80°31'30.1394"W	2187.12	51.460	1.83	-0.73	-2.88
7543.00	38.600	50.320	6838.49	139.57	1402.27	1751.36	1711288.56	409221.98	39°37'8.5084"N	80°31'29.6256"W	2243.58	51.317	7.08	3.82	9.98
7638.00	39.390	51.100	6912.32	142.66	1440.12	1797.63	1711334.83	409259.83	39°37'8.8877"N	80°31'29.0400"W	2303.35	51.301	0.98	0.83	0.82
7733.00	39.290	51.890	6985.79	146.59	1477.62	1844.76	1711381.95	409297.32	39°37'9.2636"N	80°31'28.4433"W	2363.57	51.306	0.54	-0.11	0.83
7828.00	39.380	51.930	7059.27	150.96	1514.77	1892.15	1711429.34	409334.46	39°37'9.6360"N	80°31'27.8431"W	2423.79	51.321	0.10	0.09	0.04
7923.00	38.090	60.830	7133.43	159.80	1547.66	1941.50	1711478.69	409367.35	39°37'9.9666"N	80°31'27.2173"W	2482.88	51.440	6.01	-1.36	9.37
8018.00	39.270	60.060	7207.60	172.84	1576.95	1993.14	1711530.33	409396.64	39°37'10.2619"N	80°31'26.5617"W	2541.53	51.649	1.34	1.24	-0.81
8113.00	39.470	61.620	7281.04	186.49	1606.31	2045.76	1711582.95	409426.00	39°37'10.5580"N	80°31'25.8935"W	2601.03	51.861	1.06	0.21	1.64
8209.00	39.320	77.360	7355.41	208.89	1627.52	2102.43	1711639.61	409447.21	39°37'10.7740"N	80°31'25.1726"W	2658.76	52.256	10.39	-0.16	16.40
8304.00	41.680	90.220	7427.77	245.15	1634.00	2163.50	1711700.68	409453.69	39°37'10.8449"N	80°31'24.3931"W	2711.21	52.938	9.12	2.48	13.54
8399.00	46.280	100.600	7496.21	293.93	1627.55	2228.95	1711766.13	409447.24	39°37'10.7885"N	80°31'23.5559"W	2759.92	53.864	8.99	4.84	10.93
8495.00	51.270	108.620	7559.51	354.39	1609.18	2298.64	1711835.81	409428.87	39°37'10.6149"N	80°31'22.6627"W	2805.93	55.006	8.15	5.20	8.35
8590.00	55.570	116.340	7616.17	423.33	1579.92	2368.97	1711906.14	409399.62	39°37'10.3336"N	80°31'21.7598"W	2847.49	56.300	7.94	4.53	8.13
8685.00	61.490	124.090	7665.80	500.52	1539.06	2438.79	1711975.95	409358.76	39°37'9.9377"N	80°31'20.8617"W	2883.82	57.745	9.33	6.23	8.16
8780.00	68.660	133.220	7705.88	585.44	1485.21	2505.80	1712042.96	409304.91	39°37'9.4130"N	80°31'19.9976"W	2912.88	59.344	11.52	7.55	9.61
8875.00	76.090	141.360	7734.66	675.83	1418.70	2567.01	1712104.17	409238.40	39°37'8.7626"N	80°31'19.2058"W	2932.96	61.072	11.30	7.82	8.57
8971.00	83.020	146.490	7752.07	769.59	1342.44	2622.51	1712159.66	409162.15	39°37'8.0152"N	80°31'18.4856"W	2946.14	62.893	8.93	7.22	5.34
9065.00	89.910	149.310	7757.86	861.88	1263.01	2672.33	1712209.48	409082.73	39°37'7.2359"N	80°31'17.8375"W	2955.77	64.703	7.92	7.33	3.00
9160.00	88.770	147.390	7758.96	955.24	1182.15	2722.17	1712259.31	409001.87	39°37'6.4424"N	80°31'17.1889"W	2967.78	66.526	2.35	-1.20	-2.02
9255.00	89.320	147.880	7760.54	1048.82	1101.92	2773.02	1712310.16	408921.65	39°37'5.6552"N	80°31'16.5275"W	2983.93	68.328	0.78	0.58	0.52
9350.00	89.820	147.670	7761.25	1142.37	1021.56	2823.68	1712360.81	408841.29	39°37'4.8667"N	80°31'15.8686"W	3002.79	70.111	0.57	0.53	-0.22
9444.00	88.920	148.080	7762.29	1234.90	941.96	2873.66	1712410.79	408761.69	39°37'4.0857"N	80°31'15.2184"W	3024.10	71.851	1.05	-0.96	0.44
9540.00	88.980	146.840	7764.05	1329.50	861.04	2925.29	1712462.42	408680.78	39°37'3.2918"N	80°31'14.5470"W	3049.38	73.598	1.29	0.06	-1.29
9635.00	90.550	147.690	7764.43	1423.19	781.14	2976.65	1712513.78	408600.88	39°37'2.5079"N	80°31'13.8790"W	3077.44	75.296	1.88	1.65	0.89
9730.00	88.770	148.280	7765.00	1516.67	700.59	3027.01	1712564.14	408520.34	39°37'1.7175"N	80°31'13.2238"W	3107.03	76.969	1.97	-1.87	0.62
9825.00	89.720	148.470	7766.25	1610.04	619.71	3076.82	1712613.95	408439.46	39°37'0.9238"N	80°31'12.5757"W	3138.61	78.612	1.02	1.00	0.20
9920.00	88.890	147.550	7767.40	1703.51	539.14	3127.15	1712664.27	408358.90	39°37'0.1332"N	80°31'11.9210"W	3173.28	80.218	1.30	-0.87	-0.97

RECEIVED
 Office of Oil and Gas
 WV Department of Environmental Protection
 JUL 31 2023



Actual Wellpath Report

Michael Kuhn 14H AWP Proj: 23726'

Page 6 of 14



REFERENCE WELLPATH IDENTIFICATION

Operator	EQT PRODUCTION COMPANY	Well	Michael Kuhn 14H (L-003962)
Field	Wetzel	API/Legal	
Facility	Big 467 Pad	Wellbore	Michael Kuhn 14H AWB
Slot	Slot 14H		

WELLPATH DATA (265 stations)

MD [ft]	Inclination [°]	Azimuth [°]	TVD [ft]	Vert Sect [ft]	North [ft]	East [ft]	Grid East [US ft]	Grid North [US ft]	Latitude	Longitude	Closure Dist [ft]	Closure Dir [°]	DLS [°/100ft]	Build Rate [°/100ft]	Turn Rate [°/100ft]
10015.00	89.230	149.840	7768.96	1796.76	457.99	3176.50	1712713.61	408277.75	39°36'59.3368"N	80°31'11.2786"W	3209.34	81.796	2.44	0.36	2.41
10110.00	89.970	148.390	7769.62	1889.89	376.46	3225.26	1712762.37	408196.23	39°36'58.5366"N	80°31'10.6437"W	3247.16	83.342	1.71	0.78	-1.53
10204.00	89.880	151.740	7769.75	1981.72	295.01	3272.16	1712809.27	408114.79	39°36'57.7369"N	80°31'10.0327"W	3285.43	84.848	3.57	-0.10	3.56
10300.00	91.140	151.530	7768.89	2074.91	210.55	3317.77	1712854.87	408030.32	39°36'56.9073"N	80°31'9.4377"W	3324.44	86.369	1.33	1.31	-0.22
10395.00	90.150	150.050	7767.82	2167.45	127.63	3364.12	1712901.23	407947.42	39°36'56.0931"N	80°31'8.8334"W	3366.54	87.827	1.87	-1.04	-1.56
10490.00	91.140	146.910	7766.75	2260.77	46.67	3413.78	1712950.88	407866.45	39°36'55.2985"N	80°31'8.1872"W	3414.10	89.217	3.47	1.04	-3.31
10585.00	89.170	148.830	7766.50	2354.88	-33.78	3464.30	1713001.40	407786.02	39°36'54.5092"N	80°31'7.5301"W	3464.46	90.559	2.90	-2.07	2.02
10679.00	90.150	146.030	7767.06	2446.93	-112.98	3514.90	1713051.99	407706.82	39°36'53.7321"N	80°31'6.8721"W	3516.71	91.841	3.16	1.04	-2.98
10774.00	88.430	147.300	7768.23	2540.77	-192.34	3567.09	1713104.19	407627.46	39°36'52.9537"N	80°31'6.1937"W	3572.28	93.086	2.25	-1.81	1.34
10869.00	91.360	147.410	7768.41	2634.43	-272.32	3618.33	1713155.42	407547.48	39°36'52.1690"N	80°31'5.5274"W	3628.57	94.304	3.09	3.08	0.12
10964.00	89.480	148.540	7767.71	2727.91	-352.86	3668.71	1713205.79	407466.95	39°36'51.3787"N	80°31'4.8721"W	3685.64	95.494	2.31	-1.98	1.19
11059.00	91.420	147.830	7766.96	2821.33	-433.58	3718.79	1713255.87	407386.24	39°36'50.5866"N	80°31'4.2206"W	3743.98	96.650	2.17	2.04	-0.75
11154.00	89.630	149.600	7766.09	2914.58	-514.76	3768.11	1713305.19	407305.06	39°36'49.7899"N	80°31'3.5786"W	3803.11	97.779	2.65	-1.88	1.86
11249.00	90.680	148.200	7765.84	3007.79	-596.10	3817.18	1713354.26	407223.73	39°36'48.9916"N	80°31'2.9399"W	3863.44	98.876	1.84	1.11	-1.47
11438.00	91.820	148.820	7761.71	3193.42	-757.22	3915.88	1713452.95	407062.61	39°36'47.4103"N	80°31'1.6555"W	3988.42	100.944	0.69	0.60	0.33
11533.00	91.570	148.760	7758.90	3286.62	-838.44	3965.08	1713502.15	406981.40	39°36'46.6132"N	80°31'1.0151"W	4052.76	101.940	0.27	-0.26	-0.06
11628.00	89.260	146.970	7758.22	3380.13	-918.87	4015.61	1713552.67	406900.97	39°36'45.8239"N	80°31'0.3579"W	4119.40	102.889	3.08	-2.43	-1.88
11723.00	91.540	150.330	7757.55	3473.39	-999.98	4065.02	1713602.09	406819.87	39°36'45.0279"N	80°30'59.7149"W	4186.21	103.820	4.27	2.40	3.54
11818.00	89.820	148.260	7756.42	3566.46	-1081.65	4113.53	1713650.58	406738.20	39°36'44.2262"N	80°30'59.0834"W	4253.36	104.732	2.83	-1.81	-2.18
11913.00	90.800	148.240	7755.91	3659.86	-1162.43	4163.51	1713700.57	406657.43	39°36'43.4335"N	80°30'58.4330"W	4322.74	105.599	1.03	1.03	-0.02
12008.00	90.740	148.800	7754.63	3753.18	-1243.44	4213.12	1713750.17	406576.42	39°36'42.6384"N	80°30'57.7875"W	4392.78	106.443	0.59	-0.06	0.59
12102.00	90.340	148.920	7753.75	3845.41	-1323.90	4261.73	1713798.78	406495.97	39°36'41.8488"N	80°30'57.1549"W	4462.62	107.257	0.44	-0.43	0.13
12197.00	90.590	148.030	7752.98	3938.75	-1404.87	4311.40	1713848.44	406415.00	39°36'41.0541"N	80°30'56.5086"W	4534.51	108.048	0.97	0.26	-0.94
12292.00	90.280	148.220	7752.26	4032.19	-1485.54	4361.56	1713898.60	406334.34	39°36'40.2625"N	80°30'55.8560"W	4607.61	108.809	0.38	-0.33	0.20
12387.00	91.320	148.410	7750.93	4125.57	-1566.37	4411.46	1713948.49	406253.51	39°36'39.4692"N	80°30'55.2069"W	4681.29	109.548	1.11	1.09	0.20
12482.00	91.570	149.670	7748.53	4218.70	-1647.81	4460.31	1713997.35	406172.08	39°36'38.6699"N	80°30'54.5709"W	4754.96	110.276	1.35	0.26	1.33
12577.00	91.170	147.690	7746.26	4311.95	-1728.94	4509.68	1714046.71	406090.96	39°36'37.8736"N	80°30'53.9285"W	4829.74	110.976	2.13	-0.42	-2.08
12672.00	90.340	147.450	7745.01	4405.55	-1809.12	4560.62	1714097.65	406010.78	39°36'37.0870"N	80°30'53.2661"W	4906.34	111.637	0.91	-0.87	-0.25
12766.00	90.590	147.850	7744.25	4498.15	-1888.53	4610.91	1714147.94	405931.38	39°36'36.3078"N	80°30'52.6121"W	4982.68	112.273	0.50	0.27	0.43
12861.00	90.460	148.940	7743.38	4591.51	-1969.43	4660.70	1714197.72	405850.48	39°36'35.5138"N	80°30'51.9644"W	5059.72	112.907	1.16	-0.14	1.15

RECEIVED
 Office of Oil and Gas
 JUL 31 2023
 WV Department of Environmental Protection



Actual Wellpath Report

Michael Kuhn 14H AWP Proj: 23726'

Page 7 of 14



REFERENCE WELLPATH IDENTIFICATION			
Operator	EQT PRODUCTION COMPANY	Well	Michael Kuhn 14H (L-003962)
Field	Wetzel	API/Legal	
Facility	Big 467 Pad	Wellbore	Michael Kuhn 14H AWB
Slot	Slot 14H		

WELLPATH DATA (265 stations)															
MD [ft]	Inclination [°]	Azimuth [°]	TVD [ft]	Vert Sect [ft]	North [ft]	East [ft]	Grid East [US ft]	Grid North [US ft]	Latitude	Longitude	Closure Dist [ft]	Closure Dir [°]	DLS [°/100ft]	Build Rate [°/100ft]	Turn Rate [°/100ft]
12956.00	90.800	149.430	7742.33	4684.61	-2051.01	4709.36	1714246.38	405768.90	39°36'34.7130"N	80°30'51.3309"W	5136.61	113.534	0.63	0.36	0.52
13050.00	90.430	149.180	7741.32	4776.70	-2131.84	4757.34	1714294.36	405688.08	39°36'33.9196"N	80°30'50.7062"W	5213.16	114.138	0.48	-0.39	-0.27
13145.00	90.860	149.620	7740.25	4869.74	-2213.60	4805.70	1714342.71	405606.32	39°36'33.1170"N	80°30'50.0766"W	5291.01	114.732	0.65	0.45	0.46
13240.00	90.550	148.380	7739.08	4962.90	-2295.03	4854.62	1714391.63	405524.90	39°36'32.3177"N	80°30'49.4398"W	5369.77	115.302	1.35	-0.33	-1.31
13335.00	90.920	150.220	7737.87	5055.97	-2376.70	4903.11	1714440.12	405443.23	39°36'31.5160"N	80°30'48.8085"W	5448.78	115.861	1.98	0.39	1.94
13430.00	91.390	151.400	7735.95	5148.49	-2459.62	4944.44	1714486.44	405360.32	39°36'30.7017"N	80°30'48.2047"W	5526.90	116.425	1.34	0.49	1.24
13525.00	91.350	149.870	7733.68	5241.07	-2542.39	4996.01	1714533.01	405277.56	39°36'29.8890"N	80°30'47.5978"W	5605.70	116.971	1.61	-0.04	-1.61
13620.00	90.710	148.310	7731.97	5334.20	-2623.88	5044.80	1714581.80	405196.07	39°36'29.0891"N	80°30'46.9627"W	5686.36	117.480	1.77	-0.67	-1.64
13715.00	91.200	149.220	7730.39	5427.43	-2705.10	5094.05	1714631.05	405114.86	39°36'28.2919"N	80°30'46.3218"W	5767.75	117.970	1.09	0.52	0.96
13810.00	91.290	148.820	7728.32	5520.58	-2786.52	5142.94	1714679.94	405033.44	39°36'27.4926"N	80°30'45.6855"W	5849.32	118.450	0.43	0.09	-0.42
13905.00	92.220	149.220	7725.41	5613.70	-2867.93	5191.82	1714728.81	404952.03	39°36'26.6936"N	80°30'45.0493"W	5931.27	118.916	1.07	0.98	0.42
14000.00	91.690	149.330	7722.17	5706.73	-2949.55	5240.33	1714777.32	404870.42	39°36'25.8924"N	80°30'44.4178"W	6013.39	119.373	0.57	-0.56	0.12
14095.00	91.050	148.670	7719.90	5799.88	-3030.96	5289.24	1714826.23	404789.02	39°36'25.0933"N	80°30'43.7812"W	6096.13	119.815	0.97	-0.67	-0.69
14190.00	91.170	147.980	7718.06	5893.25	-3111.79	5339.12	1714876.10	404708.19	39°36'24.3000"N	80°30'43.1324"W	6179.76	120.235	0.74	0.13	-0.73
14285.00	91.630	148.760	7715.74	5986.59	-3192.65	5388.92	1714925.90	404627.33	39°36'23.5064"N	80°30'42.4845"W	6263.67	120.645	0.95	0.48	0.82
14380.00	91.510	150.420	7713.14	6079.53	-3274.55	5436.99	1714973.97	404545.44	39°36'22.7024"N	80°30'41.8586"W	6346.93	121.059	1.75	-0.13	1.75
14475.00	90.680	149.990	7711.32	6172.28	-3356.98	5484.19	1715021.16	404463.02	39°36'21.8931"N	80°30'41.2438"W	6430.05	121.472	0.98	-0.87	-0.45
14570.00	91.110	150.150	7709.84	6265.08	-3439.30	5531.58	1715068.55	404380.70	39°36'21.0849"N	80°30'40.6265"W	6513.61	121.872	0.48	0.45	0.17
14665.00	91.050	148.700	7708.05	6358.09	-3521.07	5579.89	1715116.86	404298.94	39°36'20.2821"N	80°30'39.9975"W	6597.97	122.253	1.53	-0.06	-1.53
14760.00	92.060	149.510	7705.47	6451.20	-3602.56	5628.65	1715165.62	404217.45	39°36'19.4822"N	80°30'39.3629"W	6682.83	122.621	1.36	1.06	0.85
14854.00	93.390	148.630	7701.00	6543.26	-3683.10	5676.91	1715213.87	404136.92	39°36'18.6916"N	80°30'38.7348"W	6767.02	122.975	1.70	1.41	-0.94
14949.00	90.830	149.950	7697.50	6636.27	-3764.71	5725.39	1715262.35	404055.31	39°36'17.8905"N	80°30'38.1037"W	6852.24	123.327	3.03	-2.69	1.39
15044.00	90.680	149.460	7696.25	6729.20	-3846.73	5773.31	1715310.26	403973.29	39°36'17.0852"N	80°30'37.4798"W	6937.47	123.675	0.54	-0.16	-0.52
15139.00	90.520	147.820	7695.26	6822.48	-3927.85	5822.74	1715359.70	403892.18	39°36'16.2891"N	80°30'36.8366"W	7023.70	124.002	1.73	-0.17	-1.73
15234.00	92.190	148.330	7693.01	6915.91	-4008.45	5872.96	1715409.91	403811.58	39°36'15.4981"N	80°30'36.1834"W	7110.51	124.315	1.84	1.76	0.54
15329.00	91.050	149.890	7690.32	7009.01	-4089.94	5921.71	1715458.66	403730.10	39°36'14.6982"N	80°30'35.5489"W	7196.83	124.632	2.03	-1.20	1.64
15424.00	91.200	148.670	7688.46	7102.07	-4171.59	5970.23	1715507.18	403648.45	39°36'13.8967"N	80°30'34.9174"W	7283.26	124.943	1.29	0.16	-1.28
15519.00	91.970	148.900	7685.83	7195.28	-4252.81	6019.45	1715556.39	403567.24	39°36'13.0995"N	80°30'34.2770"W	7370.22	125.242	0.85	0.81	0.24
15614.00	91.080	150.650	7683.30	7288.16	-4334.86	6067.25	1715604.19	403485.20	39°36'12.2940"N	80°30'33.6545"W	7456.71	125.545	2.07	-0.94	1.84
15709.00	90.340	149.380	7682.13	7380.98	-4417.13	6114.72	1715651.66	403402.93	39°36'11.4861"N	80°30'33.0363"W	7543.27	125.843	1.55	-0.78	-1.34

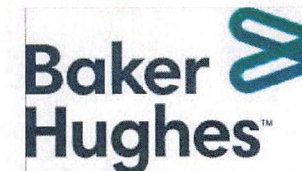
RECEIVED
 Office of Oil and Gas
 JUL 31 2023
 Environmental Protection
 Department of



Actual Wellpath Report

Michael Kuhn 14H AWP Proj: 23726'

Page 8 of 14



REFERENCE WELLPATH IDENTIFICATION

Operator	EQT PRODUCTION COMPANY	Well	Michael Kuhn 14H (L-003962)
Field	Wetzel	API/Legal	
Facility	Big 467 Pad	Wellbore	Michael Kuhn 14H AWB
Slot	Slot 14H		

WELLPATH DATA (265 stations)

MD [ft]	Inclination [°]	Azimuth [°]	TVD [ft]	Vert Sect [ft]	North [ft]	East [ft]	Grid East [US ft]	Grid North [US ft]	Latitude	Longitude	Closure Dist [ft]	Closure Dir [°]	DLS [°/100ft]	Build Rate [°/100ft]	Turn Rate [°/100ft]
15804.00	91.140	150.180	7680.90	7473.88	-4499.22	6162.54	1715699.47	403320.85	39°36'10.6803"N	80°30'32.4137"W	7630.19	126.133	1.19	0.84	0.84
15899.00	90.830	149.680	7679.27	7566.73	-4581.42	6210.13	1715747.06	403238.65	39°36'9.8732"N	80°30'31.7939"W	7717.19	126.417	0.62	-0.33	-0.53
15994.00	90.030	147.440	7678.55	7660.04	-4662.46	6259.68	1715796.60	403157.61	39°36'9.0777"N	80°30'31.1493"W	7805.26	126.680	2.50	-0.84	-2.36
16089.00	90.620	147.160	7678.01	7753.72	-4742.40	6311.00	1715847.92	403077.68	39°36'8.2934"N	80°30'30.4823"W	7894.24	126.923	0.69	0.62	-0.29
16184.00	90.770	147.820	7676.86	7847.34	-4822.51	6362.05	1715898.97	402997.57	39°36'7.5074"N	80°30'29.8186"W	7983.25	127.163	0.71	0.16	0.69
16279.00	90.400	147.180	7675.89	7940.96	-4902.63	6413.09	1715950.01	402917.46	39°36'6.7213"N	80°30'29.1551"W	8072.39	127.397	0.78	-0.39	-0.67
16374.00	91.050	147.800	7674.69	8034.59	-4982.73	6464.14	1716001.06	402837.36	39°36'5.9353"N	80°30'28.4914"W	8161.67	127.626	0.95	0.68	0.65
16468.00	90.770	147.660	7673.20	8127.15	-5062.21	6514.33	1716051.24	402757.89	39°36'5.1555"N	80°30'27.8390"W	8249.99	127.850	0.33	-0.30	-0.15
16564.00	90.770	148.760	7671.91	8221.55	-5143.80	6564.89	1716101.80	402676.31	39°36'4.3548"N	80°30'27.1813"W	8340.05	128.080	1.15	0.00	1.15
16659.00	89.880	147.250	7671.37	8315.02	-5224.36	6615.23	1716152.13	402595.75	39°36'3.5642"N	80°30'26.5268"W	8429.42	128.300	1.84	-0.94	-1.59
16754.00	90.340	149.410	7671.19	8408.40	-5305.21	6665.10	1716202.00	402514.91	39°36'2.7707"N	80°30'25.8781"W	8518.73	128.519	2.32	0.48	2.27
16849.00	90.180	148.980	7670.75	8501.51	-5386.80	6713.75	1716250.65	402433.32	39°36'1.9697"N	80°30'25.2449"W	8607.68	128.742	0.48	-0.17	-0.45
16944.00	89.690	149.100	7670.86	8594.67	-5468.27	6762.62	1716299.52	402351.86	39°36'1.1701"N	80°30'24.6090"W	8696.84	128.959	0.53	-0.52	0.13
17039.00	90.650	150.690	7670.58	8687.54	-5550.45	6810.27	1716347.16	402269.68	39°36'0.3632"N	80°30'23.9885"W	8785.63	129.180	1.96	1.01	1.67
17134.00	90.120	151.250	7669.94	8780.02	-5633.51	6856.37	1716393.26	402186.62	39°35'59.5474"N	80°30'23.3877"W	8873.91	129.408	0.81	-0.56	0.59
17229.00	90.280	149.430	7669.61	8872.73	-5716.06	6903.38	1716440.27	402104.08	39°35'58.7368"N	80°30'22.7754"W	8962.70	129.625	1.92	0.17	-1.92
17325.00	90.740	151.600	7668.76	8966.35	-5799.62	6950.63	1716487.51	402020.53	39°35'57.9163"N	80°30'22.1599"W	9052.45	129.842	2.31	0.48	2.26
17419.00	90.180	151.380	7668.00	9057.66	-5882.22	6995.49	1716532.37	401937.93	39°35'57.1050"N	80°30'21.5750"W	9139.88	130.059	0.64	-0.60	-0.23
17515.00	90.340	150.540	7667.57	9151.12	-5966.15	7042.09	1716578.97	401854.01	39°35'56.2807"N	80°30'20.9677"W	9229.62	130.272	0.89	0.17	-0.87
17609.00	90.620	150.020	7666.78	9242.87	-6047.78	7088.69	1716625.57	401772.38	39°35'55.4791"N	80°30'20.3608"W	9318.00	130.469	0.63	0.30	-0.55
17704.00	90.370	149.760	7665.96	9335.75	-6129.96	7136.35	1716673.22	401690.21	39°35'54.6723"N	80°30'19.7403"W	9407.65	130.662	0.38	-0.26	-0.27
17799.00	90.520	150.040	7665.22	9428.62	-6212.14	7183.99	1716720.86	401608.03	39°35'53.8653"N	80°30'19.1200"W	9497.39	130.851	0.33	0.16	0.29
17895.00	90.150	149.140	7664.66	9522.57	-6294.93	7232.58	1716769.45	401525.24	39°35'53.0525"N	80°30'18.4874"W	9588.35	131.035	1.01	-0.39	-0.94
17989.00	89.850	147.910	7664.66	9614.91	-6375.10	7281.66	1716818.52	401445.08	39°35'52.2657"N	80°30'17.8490"W	9678.04	131.202	1.35	-0.32	-1.31
18084.00	89.780	148.310	7664.96	9708.36	-6455.76	7331.85	1716868.71	401364.42	39°35'51.4741"N	80°30'17.1964"W	9768.97	131.364	0.43	-0.07	0.42
18179.00	89.940	148.130	7665.20	9801.78	-6536.52	7381.88	1716918.74	401283.67	39°35'50.6815"N	80°30'16.5458"W	9859.93	131.524	0.25	0.17	-0.19
18274.00	89.750	148.250	7665.45	9895.21	-6617.25	7431.95	1716968.81	401202.95	39°35'49.8892"N	80°30'15.8946"W	9950.98	131.681	0.24	-0.20	0.13
18369.00	89.510	148.400	7666.07	9988.59	-6698.10	7481.84	1717018.69	401122.10	39°35'49.0958"N	80°30'15.2459"W	10042.03	131.836	0.30	-0.25	0.16
18464.00	90.150	148.550	7666.35	10081.93	-6779.07	7531.51	1717068.36	401041.13	39°35'48.3010"N	80°30'14.5998"W	10133.09	131.990	0.69	0.67	0.16
18559.00	89.850	148.990	7666.35	10175.18	-6860.31	7580.76	1717117.61	400959.90	39°35'47.5036"N	80°30'13.9590"W	10224.08	132.144	0.56	-0.32	0.46

RECEIVED
 Office of Oil and Gas
 Environmental Protection
 JUL 31 2023
 WV Department of



Actual Wellpath Report

Michael Kuhn 14H AWP Proj: 23726'

Page 9 of 14



REFERENCE WELLPATH IDENTIFICATION

Operator	EQT PRODUCTION COMPANY	Well	Michael Kuhn 14H (L-003962)
Field	Wetzel	API/Legal	
Facility	Big 467 Pad	Wellbore	Michael Kuhn 14H AWB
Slot	Slot 14H		

WELLPATH DATA (265 stations)

MD [ft]	Inclination [°]	Azimuth [°]	TVD [ft]	Vert Sect [ft]	North [ft]	East [ft]	Grid East [US ft]	Grid North [US ft]	Latitude	Longitude	Closure Dist [ft]	Closure Dir [°]	DLS [°/100ft]	Build Rate [°/100ft]	Turn Rate [°/100ft]
18654.00	89.690	149.060	7666.73	10268.34	-6941.76	7629.66	1717166.50	400878.46	39°35'46.7041"N	80°30'13.3229"W	10315.02	132.297	0.18	-0.17	0.07
18749.00	89.690	148.660	7667.24	10361.56	-7023.07	7678.78	1717215.62	400797.15	39°35'45.9060"N	80°30'12.6837"W	10406.11	132.446	0.42	0.00	-0.42
18844.00	89.720	148.530	7667.73	10454.86	-7104.15	7728.29	1717265.12	400716.07	39°35'45.1101"N	80°30'12.0399"W	10497.40	132.590	0.14	0.03	-0.14
18939.00	89.780	148.630	7668.15	10548.17	-7185.22	7777.81	1717314.64	400635.01	39°35'44.3144"N	80°30'11.3957"W	10588.75	132.732	0.12	0.06	0.11
19033.00	89.420	148.790	7668.80	10640.45	-7265.55	7826.63	1717363.46	400554.69	39°35'43.5260"N	80°30'10.7607"W	10679.15	132.871	0.42	-0.38	0.17
19129.00	89.630	148.780	7669.60	10734.68	-7347.64	7876.38	1717413.21	400472.60	39°35'42.7201"N	80°30'10.1135"W	10771.50	133.011	0.22	0.22	-0.01
19224.00	89.450	148.590	7670.36	10827.95	-7428.80	7925.75	1717462.58	400391.44	39°35'41.9235"N	80°30'9.4712"W	10863.00	133.146	0.28	-0.19	-0.20
19319.00	89.230	148.270	7671.46	10921.30	-7509.74	7975.49	1717512.31	400310.51	39°35'41.1292"N	80°30'8.8244"W	10954.66	133.277	0.41	-0.23	-0.34
19414.00	89.110	148.750	7672.83	11014.62	-7590.74	8025.10	1717561.92	400229.52	39°35'40.3341"N	80°30'8.1791"W	11046.34	133.407	0.52	-0.13	0.51
19509.00	89.380	148.630	7674.09	11107.88	-7671.90	8074.47	1717611.28	400148.36	39°35'39.5375"N	80°30'7.5370"W	11138.00	133.535	0.31	0.28	-0.13
19604.00	89.260	148.950	7675.21	11201.12	-7753.14	8123.69	1717660.50	400067.12	39°35'38.7400"N	80°30'6.8967"W	11229.67	133.663	0.36	-0.13	0.34
19699.00	89.050	144.750	7676.61	11294.89	-7832.65	8175.62	1717712.43	399987.62	39°35'37.9600"N	80°30'6.2220"W	11322.16	133.773	4.43	-0.22	-4.42
19794.00	88.550	141.550	7678.60	11389.43	-7908.65	8232.58	1717769.38	399911.63	39°35'37.2152"N	80°30'5.4837"W	11415.87	133.850	3.41	-0.53	-3.37
19889.00	88.980	140.170	7680.65	11484.27	-7982.31	8292.53	1717829.33	399837.97	39°35'36.4939"N	80°30'4.7075"W	11510.14	133.908	1.52	0.45	-1.45
19984.00	87.840	137.370	7683.29	11579.21	-8053.72	8355.11	1717891.91	399766.56	39°35'35.7950"N	80°30'3.8980"W	11604.75	133.948	3.18	-1.20	-2.95
20078.00	88.060	135.050	7686.65	11673.11	-8121.53	8420.11	1717956.91	399698.76	39°35'35.1321"N	80°30'3.0580"W	11698.61	133.966	2.48	0.23	-2.47
20173.00	87.840	131.310	7690.05	11767.73	-8186.48	8489.33	1718026.12	399633.81	39°35'34.4978"N	80°30'2.1647"W	11793.52	133.960	3.94	-0.23	-3.94
20268.00	87.970	127.310	7693.53	11861.62	-8246.62	8562.77	1718099.56	399573.68	39°35'33.9116"N	80°30'1.2181"W	11888.13	133.922	4.21	0.14	-4.21
20363.00	88.210	131.210	7696.69	11955.50	-8306.69	8636.27	1718173.05	399513.61	39°35'33.3260"N	80°30'0.2707"W	11982.75	133.886	4.11	0.25	4.11
20458.00	88.250	135.410	7699.63	12050.15	-8371.81	8705.35	1718242.13	399448.49	39°35'32.6900"N	80°29'59.3791"W	12077.68	133.881	4.42	0.04	4.42
20553.00	88.250	139.510	7702.53	12145.09	-8441.76	8769.54	1718306.31	399378.55	39°35'32.0058"N	80°29'58.5493"W	12172.43	133.909	4.31	0.00	4.32
20648.00	88.240	141.040	7705.44	12239.95	-8514.79	8830.22	1718366.99	399305.52	39°35'31.2908"N	80°29'57.7638"W	12266.80	133.958	1.61	-0.01	1.61
20743.00	87.720	140.200	7708.79	12334.77	-8588.17	8890.46	1718427.22	399232.14	39°35'30.5722"N	80°29'56.9840"W	12361.10	134.009	1.04	-0.55	-0.88
20839.00	88.000	144.680	7712.38	12430.36	-8664.20	8948.92	1718485.68	399156.12	39°35'29.8272"N	80°29'56.2265"W	12455.98	134.074	4.67	0.29	4.67
20933.00	87.350	147.620	7716.19	12523.26	-8742.19	9001.23	1718537.99	399078.13	39°35'29.0622"N	80°29'55.5472"W	12547.83	134.164	3.20	-0.69	3.13
21028.00	86.700	150.210	7721.12	12616.33	-8823.44	9050.21	1718586.97	398996.90	39°35'28.2647"N	80°29'54.9101"W	12639.59	134.273	2.81	-0.68	2.73
21124.00	87.070	154.770	7726.34	12709.01	-8908.43	9094.48	1718631.23	398911.90	39°35'27.4296"N	80°29'54.3326"W	12730.66	134.408	4.76	0.39	4.75
21219.00	87.570	158.210	7730.78	12798.86	-8995.44	9132.32	1718669.08	398824.90	39°35'26.5739"N	80°29'53.8369"W	12818.63	134.567	3.66	0.53	3.62
21314.00	87.810	160.130	7734.61	12887.22	-9084.15	9166.08	1718702.83	398736.19	39°35'25.7009"N	80°29'53.3932"W	12904.99	134.743	2.04	0.25	2.02
21409.00	88.210	160.110	7737.91	12975.02	-9173.44	9198.86	1718735.11	398646.91	39°35'24.8221"N	80°29'52.9681"W	12990.84	134.922	0.42	0.42	-0.02

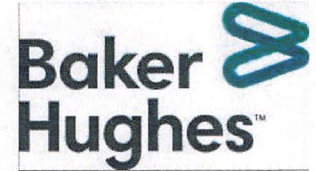
RECEIVED
 Dept of Oil and Gas
 Environmental Protection
 31 2023



Actual Wellpath Report

Michael Kuhn 14H AWP Proj: 23726'

Page 10 of 14



REFERENCE WELLPATH IDENTIFICATION			
Operator	EQT PRODUCTION COMPANY	Well	Michael Kuhn 14H (L-003962)
Field	Wetzel	API/Legal	
Facility	Big 467 Pad	Wellbore	Michael Kuhn 14H AWB
Slot	Slot 14H		

WELLPATH DATA (265 stations) † = interpolated, ‡ = extrapolated station																
MD [ft]	Inclination [°]	Azimuth [°]	TVD [ft]	Vert Sect [ft]	North [ft]	East [ft]	Grid East [US ft]	Grid North [US ft]	Latitude	Longitude	Closure Dist [ft]	Closure Dir [°]	DLS [°/100ft]	Build Rate [°/100ft]	Turn Rate [°/100ft]	
21503.00	88.210	164.300	7740.85	13060.52	-9262.88	9227.07	1718763.81	398557.48	39°35'23.9413"N	80°29'52.5888"W	13074.39	135.111	4.46	0.00	4.46	
21598.00	89.450	170.010	7742.79	13143.23	-9355.44	9248.17	1718784.92	398464.92	39°35'23.0289"N	80°29'52.3061"W	13154.96	135.330	6.15	1.31	6.01	
21693.00	87.070	166.840	7745.68	13224.88	-9448.45	9267.22	1718803.96	398371.92	39°35'22.1118"N	80°29'52.0496"W	13234.60	135.555	4.17	-2.51	-3.34	
21788.00	88.030	163.230	7749.74	13309.22	-9540.12	9291.73	1718828.47	398280.25	39°35'21.2085"N	80°29'51.7236"W	13317.29	135.756	3.93	1.01	-3.80	
21882.00	88.280	163.560	7752.76	13393.92	-9630.16	9318.58	1718855.32	398190.22	39°35'20.3217"N	80°29'51.3679"W	13400.59	135.942	0.44	0.27	0.35	
21977.00	88.030	160.770	7755.82	13480.37	-9720.54	9347.66	1718884.39	398099.85	39°35'19.4317"N	80°29'50.9837"W	13485.82	136.120	2.95	-0.26	-2.94	
22072.00	87.320	162.110	7759.68	13567.29	-9810.52	9377.87	1718914.60	398009.87	39°35'18.5457"N	80°29'50.5851"W	13571.69	136.292	1.60	-0.75	1.41	
22168.00	86.830	158.630	7764.58	13655.78	-9900.81	9410.07	1718946.80	397919.59	39°35'17.6570"N	80°29'50.1610"W	13659.26	136.456	3.66	-0.51	-3.63	
22263.00	86.980	150.160	7769.72	13746.58	-9986.27	9451.03	1718987.76	397834.13	39°35'16.8169"N	80°29'49.6257"W	13749.46	136.577	8.90	0.16	-8.92	
22358.00	86.890	147.560	7774.80	13839.66	-10067.46	9500.08	1719036.81	397752.95	39°35'16.0199"N	80°29'48.9877"W	13842.16	136.661	2.73	-0.09	-2.74	
22452.00	85.960	147.630	7780.66	13932.09	-10146.67	9550.36	1719087.08	397673.74	39°35'15.2426"N	80°29'48.3343"W	13934.28	136.734	0.99	-0.99	0.07	
22548.00	85.320	147.420	7787.96	14026.42	-10227.42	9601.75	1719138.48	397592.99	39°35'14.4502"N	80°29'47.6665"W	14028.32	136.807	0.70	-0.67	-0.22	
22643.00	85.620	149.440	7795.46	14119.48	-10308.10	9651.33	1719188.05	397512.32	39°35'13.6583"N	80°29'47.0218"W	14121.09	136.885	2.14	0.32	2.13	
22738.00	85.100	149.080	7803.15	14212.27	-10389.49	9699.73	1719236.45	397430.94	39°35'12.8593"N	80°29'46.3922"W	14213.59	136.966	0.67	-0.55	-0.38	
22833.00	85.040	149.500	7811.31	14305.00	-10470.86	9748.07	1719284.78	397349.57	39°35'12.0604"N	80°29'45.7633"W	14306.08	137.047	0.44	-0.06	0.44	
22928.00	83.530	147.470	7820.77	14397.87	-10551.44	9797.47	1719334.18	397268.99	39°35'11.2695"N	80°29'45.1209"W	14398.73	137.122	2.65	-1.59	-2.14	
23023.00	84.700	150.720	7830.51	14490.50	-10632.52	9846.00	1719382.71	397187.93	39°35'10.4736"N	80°29'44.4896"W	14491.17	137.199	3.62	1.23	3.42	
23118.00	85.840	149.560	7838.35	14582.97	-10714.62	9893.14	1719429.84	397105.83	39°35'9.6674"N	80°29'43.8760"W	14583.46	137.283	1.71	1.20	-1.22	
23213.00	84.920	149.380	7846.00	14675.69	-10796.18	9941.24	1719477.94	397024.27	39°35'8.8666"N	80°29'43.2501"W	14676.03	137.361	0.99	-0.97	-0.19	
23308.00	85.220	148.600	7854.16	14768.52	-10877.30	9990.00	1719526.70	396943.15	39°35'8.0702"N	80°29'42.6159"W	14768.74	137.435	0.88	0.32	-0.82	
23403.00	85.500	148.420	7861.85	14861.54	-10958.05	10039.46	1719576.16	396862.41	39°35'7.2777"N	80°29'41.9728"W	14861.68	137.505	0.35	0.29	-0.19	
23498.00	84.820	149.030	7869.86	14954.47	-11038.95	10088.60	1719625.30	396781.51	39°35'6.4835"N	80°29'41.3337"W	14954.54	137.576	0.96	-0.72	0.64	
23593.00	85.160	149.510	7878.16	15047.20	-11120.30	10136.96	1719673.65	396700.17	39°35'5.6849"N	80°29'40.7046"W	15047.23	137.649	0.62	0.36	0.51	
23687.00	84.910	148.840	7886.30	15138.99	-11200.72	10184.95	1719721.63	396619.76	39°35'4.8954"N	80°29'40.0803"W	15139.00	137.719	0.76	-0.27	-0.71	
23726.00‡	84.910	148.840	7889.76	15177.12	-11233.96	10205.05	1719741.73	396586.52	39°35'4.5691"N	80°29'39.8189"W	15177.12	137.748	0.00	0.00	0.00	

RECEIVED
 Office of Oil and Gas
 JUL 31 2023
 WV Department of
 Environmental Protection



Actual Wellpath Report

Michael Kuhn 14H AWP Proj: 23726'

Page 11 of 14



REFERENCE WELLPATH IDENTIFICATION			
Operator	EQT PRODUCTION COMPANY	Well	Michael Kuhn 14H (L-003962)
Field	Wetzel	API/Legal	
Facility	Big 467 Pad	Wellbore	Michael Kuhn 14H AWB
Slot	Slot 14H		

HOLE & CASING SECTIONS - Ref Wellbore: Michael Kuhn 14H AWB Ref Wellpath: Michael Kuhn 14H AWP Proj: 23726'									
String/Diameter	Start MD [ft]	End MD [ft]	Interval [ft]	Start TVD [ft]	End TVD [ft]	Start N/S [ft]	Start E/W [ft]	End N/S [ft]	End E/W [ft]
17.5in Open Hole	28.00	1374.00	1346.00	28.00	1373.99	0.00	0.00	1.29	-4.20
13.375in Casing Surface	28.00	1354.00	1326.00	28.00	1353.99	0.00	0.00	1.18	-4.19
12.25in Open Hole	1374.00	2866.00	1492.00	1373.99	2864.49	1.29	-4.20	-46.92	23.32
9.625in Casing Intermediate	28.00	2846.00	2818.00	28.00	2844.54	0.00	0.00	-46.09	22.22
8.75in Open Hole	2866.00	7432.00	4566.00	2864.49	6749.25	-46.92	23.32	1355.79	1704.67
8.5in Open Hole	7432.00	23726.00	16294.00	6749.25	7889.76	1355.79	1704.67	-11233.96	10205.05
5.5in Casing Production	28.00	23696.00	23668.00	28.00	7887.09	0.00	0.00	-11208.39	10189.59

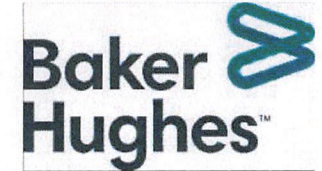
RECEIVED
 Office of Oil and Gas
 JUL 31 2023
 WV Department of
 Environmental Protection



Actual Wellpath Report

Michael Kuhn 14H AWP Proj: 23726'

Page 12 of 14



REFERENCE WELLPATH IDENTIFICATION

Operator	EQT PRODUCTION COMPANY	Well	Michael Kuhn 14H (L-003962)
Field	Wetzel	API/Legal	
Facility	Big 467 Pad	Wellbore	Michael Kuhn 14H AWB
Slot	Slot 14H		

TARGETS

Name	TVD [ft]	North [ft]	East [ft]	Grid East [US ft]	Grid North [US ft]	Latitude	Longitude	Shape
Michael Kuhn 14H BHL Rev-1	7741.00	-11234.78	10204.94	1719741.63	396585.70	39°35'4.5610"N	80°29'39.8201"W	point
Michael Kuhn 14H LP Rev-1	7741.00	1271.01	2690.28	1712227.43	409090.72	39°37'7.3169"N	80°31'17.6093"W	point
Michael Kuhn 14H LP Rev-2	7764.00	1271.01	2690.28	1712227.43	409090.72	39°37'7.3169"N	80°31'17.6093"W	point
Michael Kuhn 14H AZI-1 Rev-1	7901.69	-7742.28	8106.27	1717643.08	400077.98	39°35'38.8454"N	80°30'7.1208"W	point
Michael Kuhn 14H AZI-2 Rev-1	7910.93	-8262.22	8565.52	1718102.31	399558.08	39°35'33.7577"N	80°30'1.1807"W	point
Michael Kuhn 14H AZI-3 Rev-1	7930.20	-9458.62	9258.74	1718795.48	398361.75	39°35'22.0103"N	80°29'52.1565"W	point
Michael Kuhn 14H BHL Rev-2	7956.75	-11234.78	10204.94	1719741.63	396585.70	39°35'4.5610"N	80°29'39.8201"W	point

RECEIVED
 Office of Oil and Gas
 JUL 31 2023
 WV Department of
 Environmental Protection



Actual Wellpath Report

Michael Kuhn 14H AWP Proj: 23726'

Page 13 of 14



REFERENCE WELLPATH IDENTIFICATION

Operator	EQT PRODUCTION COMPANY	Well	Michael Kuhn 14H (L-003962)
Field	Wetzel	API/Legal	
Facility	Big 467 Pad	Wellbore	Michael Kuhn 14H AWB
Slot	Slot 14H		

WELLPATH COMPOSITION - Ref Wellbore: Michael Kuhn 14H AWB Ref Wellpath: Michael Kuhn 14H AWP Proj: 23726'

Start MD [ft]	End MD [ft]	Positional Uncertainty Model	Log Name/Comment	Wellbore	Survey Date
28.00	1320.00	Gyrodata 2015 - CT+WIR+ALC	01_Gyro Data [CT+WIR+ALC] (115'-1320')	Michael Kuhn 14H AWB	1/21/2022
1320.00	7231.00	OWSG MWD rev2 - Standard	02_SD1 MWD [OWSG MWD Rev.2-Standard] (1320') (1387'-7231')	Michael Kuhn 14H AWB	1/21/2022
7231.00	23726.00	OWSG MWD rev2 + IFR1 + Multi-Station Correction	03_ATK Curve [OWSG MWD Rev.2+IFR1+MS] <8.5"> (7231')(7448'-23687')	Michael Kuhn 14H AWB	3/9/2022

RECEIVED
 Office of Oil and Gas
 JUL 31 2023
 WV Department of
 Environmental Protection



Actual Wellpath Report

Michael Kuhn 14H AWP Proj: 23726'

Page 14 of 14



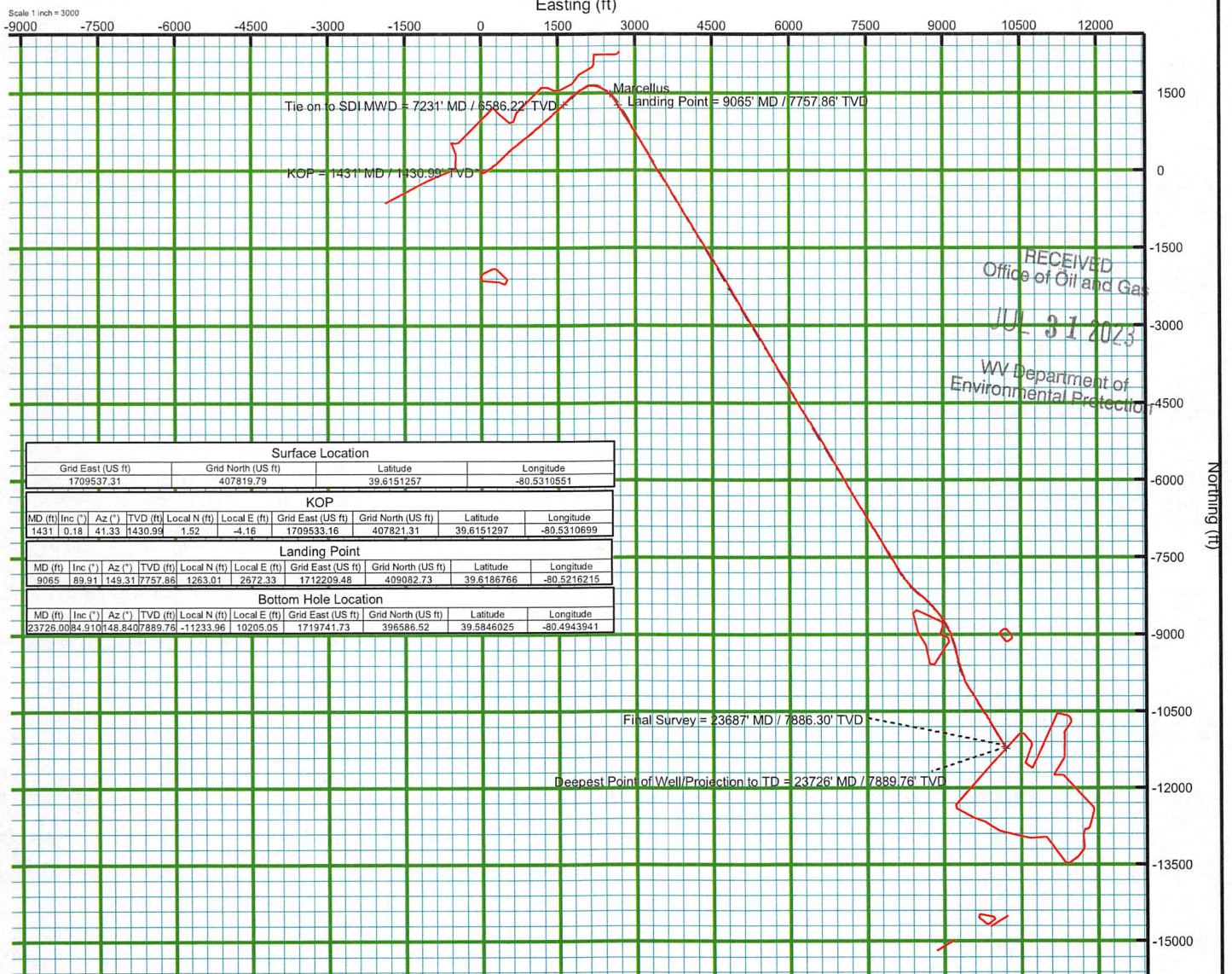
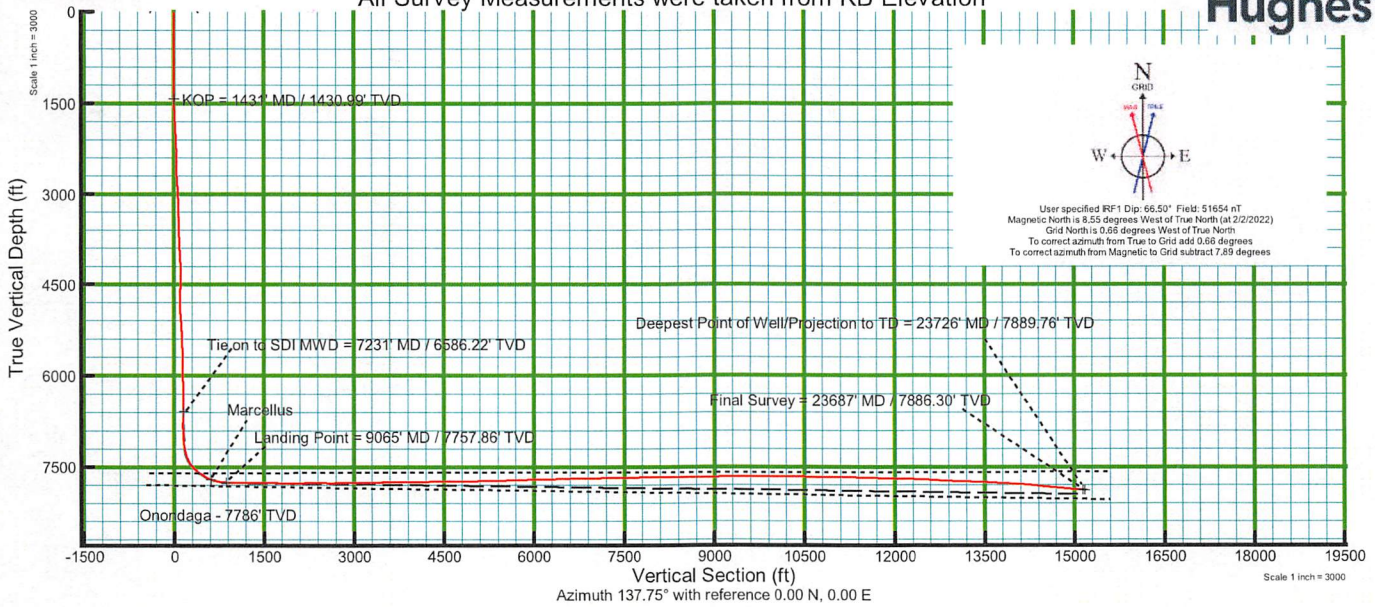
REFERENCE WELLPATH IDENTIFICATION			
Operator	EQT PRODUCTION COMPANY	Well	Michael Kuhn 14H (L-003962)
Field	Wetzel	API/Legal	
Facility	Big 467 Pad	Wellbore	Michael Kuhn 14H AWB
Slot	Slot 14H		

COMMENTS
<p>Wellpath general comments API: 47-103-03416-0000 BH Job #: 111204431 Rig: Patterson 294 Duration: 3/11/2022 - 3/16/2022</p> <p>01_Gyro Data [CT+WIR+ALC] (115'-1320') 02_SDI MWD [OWSG MWD Rev.2-Standard] (1320') (1387'-7231') 03_ATK Curve [OWSG MWD Rev.2+IFR1+MS] <8.5"> (7231')(7448'-23687') Final Survey MD at: 23687' Projected MD at TD: 23726'</p> <p>KOP = 1431' MD / 1430.99' TVD Tie on to SDI MWD = 7231' MD / 6586.22' TVD Marcellus Landing Point = 9065' MD / 7757.86' TVD Final Survey = 23687' MD / 7886.30' TVD Deepest Point of Well/Projection to TD = 23726' MD / 7889.76' TVD</p>

RECEIVED
 Office of Oil and Gas
 JUL 31 2023
 WV Department of
 Environmental Protection



KB Elevation=1536 FT
 Ground Elevation=1508 FT
 All Survey Measurements were taken from KB Elevation



Surface Location									
Grid East (US ft)		Grid North (US ft)		Latitude	Longitude				
1709537.31		407819.79		39.6151257	-80.5310551				
KOP									
MD (ft)	Inc. (°)	Az (°)	TVD (ft)	Local N (ft)	Local E (ft)	Grid East (US ft)	Grid North (US ft)	Latitude	Longitude
1431	0.18	41.33	1430.99	1.52	-4.16	1709533.16	407821.31	39.6151297	-80.5310699
Landing Point									
MD (ft)	Inc. (°)	Az (°)	TVD (ft)	Local N (ft)	Local E (ft)	Grid East (US ft)	Grid North (US ft)	Latitude	Longitude
9065	89.91	149.31	7757.86	1263.01	2672.33	1712209.48	409082.73	39.6186766	-80.5216215
Bottom Hole Location									
MD (ft)	Inc. (°)	Az (°)	TVD (ft)	Local N (ft)	Local E (ft)	Grid East (US ft)	Grid North (US ft)	Latitude	Longitude
23726.00	84.91	148.84	7889.76	-11233.96	10205.05	1719741.73	396586.52	39.5846025	-80.4943941

12/01/2023