

LATITUDE: 39°42'30" SURFACE HOLE (2000' SCALE)

LATITUDE: 39°42'30" BOTTOM HOLE (2000' SCALE)

4125'

3813'

BHL

80°40'00" BOTTOM HOLE (2000' SCALE)

9340'

LONGITUDE: 80°37'30" SURFACE HOLE (2000' SCALE)

LONGITUDE: 80°37'30" SURFACE HOLE (2000' SCALE)

LONGITUDE: 80°37'30" SURFACE HOLE (2000' SCALE)

LONGITUDE: 80°37'30" SURFACE HOLE (2000' SCALE)

LONGITUDE: 80°37'30" SURFACE HOLE (2000' SCALE)

LONGITUDE: 80°37'30" SURFACE HOLE (2000' SCALE)

LONGITUDE: 80°37'30" SURFACE HOLE (2000' SCALE)

LONGITUDE: 80°37'30" SURFACE HOLE (2000' SCALE)

LONGITUDE: 80°37'30" SURFACE HOLE (2000' SCALE)

LONGITUDE: 80°37'30" SURFACE HOLE (2000' SCALE)

LONGITUDE: 80°37'30" SURFACE HOLE (2000' SCALE)

LONGITUDE: 80°37'30" SURFACE HOLE (2000' SCALE)

LONGITUDE: 80°37'30" SURFACE HOLE (2000' SCALE)

LONGITUDE: 80°37'30" SURFACE HOLE (2000' SCALE)

LONGITUDE: 80°37'30" SURFACE HOLE (2000' SCALE)

LONGITUDE: 80°37'30" SURFACE HOLE (2000' SCALE)

LONGITUDE: 80°37'30" SURFACE HOLE (2000' SCALE)

LONGITUDE: 80°37'30" SURFACE HOLE (2000' SCALE)

LONGITUDE: 80°37'30" SURFACE HOLE (2000' SCALE)

LONGITUDE: 80°37'30" SURFACE HOLE (2000' SCALE)

LONGITUDE: 80°37'30" SURFACE HOLE (2000' SCALE)

LONGITUDE: 80°37'30" SURFACE HOLE (2000' SCALE)

LONGITUDE: 80°37'30" SURFACE HOLE (2000' SCALE)

LONGITUDE: 80°37'30" SURFACE HOLE (2000' SCALE)

LONGITUDE: 80°37'30" SURFACE HOLE (2000' SCALE)

LONGITUDE: 80°37'30" SURFACE HOLE (2000' SCALE)

LONGITUDE: 80°37'30" SURFACE HOLE (2000' SCALE)

LONGITUDE: 80°37'30" SURFACE HOLE (2000' SCALE)

LONGITUDE: 80°37'30" SURFACE HOLE (2000' SCALE)

LONGITUDE: 80°37'30" SURFACE HOLE (2000' SCALE)

LONGITUDE: 80°37'30" SURFACE HOLE (2000' SCALE)

LONGITUDE: 80°37'30" SURFACE HOLE (2000' SCALE)

LONGITUDE: 80°37'30" SURFACE HOLE (2000' SCALE)

LONGITUDE: 80°37'30" SURFACE HOLE (2000' SCALE)

LONGITUDE: 80°37'30" SURFACE HOLE (2000' SCALE)

LONGITUDE: 80°37'30" SURFACE HOLE (2000' SCALE)

LONGITUDE: 80°37'30" SURFACE HOLE (2000' SCALE)

LONGITUDE: 80°37'30" SURFACE HOLE (2000' SCALE)

LONGITUDE: 80°37'30" SURFACE HOLE (2000' SCALE)

LONGITUDE: 80°37'30" SURFACE HOLE (2000' SCALE)

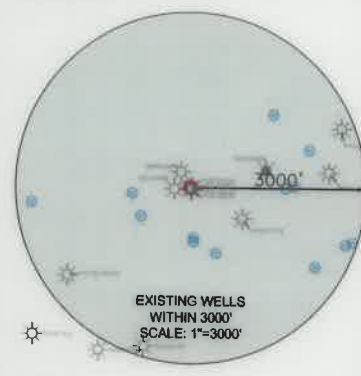
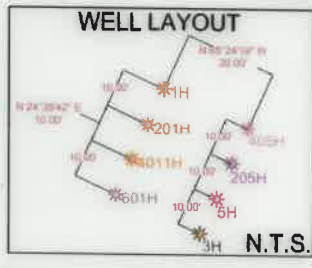
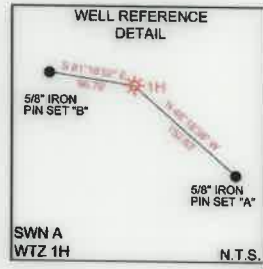
LONGITUDE: 80°37'30" SURFACE HOLE (2000' SCALE)



68011 Vineyard Road
St. Clairsville, Ohio 43950
740-695-6100

NOTES ON SURVEY

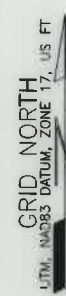
1. COORDINATE SYSTEM IS UTM NAD 83 DATUM, ZONE 17, U.S. FOOT AND WELL COORDINATES ESTABLISHED USING SURVEY GRADE GPS.
2. SURFACE AND ROYALTY OWNER INFORMATION AND THEIR BOUNDARIES SHOWN HEREON WERE PLOTTED FROM DEEDS AND/OR TAX PARCEL MAPS PROVIDED BY CLIENT AND/OR FIELD LOCATIONS.
3. THIS PLAT DOES NOT REPRESENT A BOUNDARY SURVEY OF THE PARCELS SHOWN HEREON.
4. NO DWELLINGS OR BUILDINGS WITHIN 625 FEET OF PROPOSED CENTER OF PAD.
5. NO PERENNIAL STREAMS, LAKES, PONDS, RESERVOIRS OR WETLANDS WITHIN 100 FEET OF THE LIMITS OF DISTURBANCE.
6. NO NATURALLY PRODUCING TROUT STREAM WITHIN 300 FEET OF THE LIMITS OF DISTURBANCE.
7. NO WATER WELLS OR DEVELOPED SPRINGS WITHIN 250 FEET OF PROPOSED WELL.



LINE	BEARING	DISTANCE
L1	S70°26'39\"/>	
L2	S46°00'20\"/>	

AS-DRILLED BOTTOM HOLE
PROPOSED BOTTOM HOLE

SURFACE HOLE LOCATION (SHL): UTM (NAD83, ZONE 17, METERS): NORTHING: 4392602.03 EASTING: 530900.71
LANDING POINT LOCATION (LPL): UTM (NAD83, ZONE 17, METERS): NORTHING: 4392363.72 EASTING: 530530.02
BOTTOM HOLE LOCATION (BHL): UTM (NAD83, ZONE 17, METERS): NORTHING: 4394275.86 EASTING: 528401.87
SURFACE HOLE LOCATION (SHL): UTM (NAD83, ZONE 17, METERS): NORTHING: 4392602.00 EASTING: 530900.72
LANDING POINT LOCATION (LPL): UTM (NAD83, ZONE 17, METERS): NORTHING: 4392363.06 EASTING: 530523.29
BOTTOM HOLE LOCATION (BHL): UTM (NAD83, ZONE 17, METERS): NORTHING: 4394276.75 EASTING: 528402.40



I, THE UNDERSIGNED, HEREBY CERTIFY THAT THIS PLAT IS CORRECT TO THE BEST OF MY KNOWLEDGE AND BELIEF AND SHOWS ALL THE INFORMATION REQUIRED BY LAW AND REGULATIONS ISSUED AND PRESCRIBED BY THE DEPARTMENT OF ENVIRONMENTAL PROTECTION.

P.E. 19809

COMPANY: **SWN** Production Company, LLC



<p>(+) DENOTES LOCATION OF WELL ON UNITED STATES TOPOGRAPHIC MAPS</p> <p>WVDEP OFFICE OF OIL & GAS 601 57TH STREET CHARLESTON, WV 25034</p>	<p>MINIMUM DEGREE OF ACCURACY: 1/200</p> <p>PROVEN SURVEY SOURCE OF GRADE GPS ELEVATION: (NAVD 88, US FT)</p>	<p>SWN A WTZ 1H</p> <p>OPERATOR'S WELL #:</p> <p>API WELL #: 47 103 03421</p> <p>STATE COUNTY PERMIT</p>
	<p>WELL TYPE: OIL <input type="checkbox"/> WASTE DISPOSAL <input type="checkbox"/> PRODUCTION <input type="checkbox"/> DEEP <input type="checkbox"/> GAS <input checked="" type="checkbox"/> LIQUID INJECTION <input type="checkbox"/> STORAGE <input type="checkbox"/> SHALLOW <input checked="" type="checkbox"/></p> <p>WATERSHED: UPPER OHIO SOUTH</p> <p>DISTRICT: PROCTOR COUNTY: WETZEL</p> <p>SURFACE OWNER: SWN PRODUCTION COMPANY, LLC</p> <p>OIL & GAS ROYALTY OWNER: RODNEY CALVERT, ET AL</p> <p>DRILL <input checked="" type="checkbox"/> DRILL DEEPER <input type="checkbox"/> REDRILL <input type="checkbox"/> FRACTURE OR STIMULATE <input type="checkbox"/> PLUG OFF OLD FORMATION: <input type="checkbox"/> PERFORATE NEW FORMATION <input type="checkbox"/></p> <p>CONVERT <input type="checkbox"/> PLUG & ABANDON <input type="checkbox"/> CLEAN OUT & REPLUG <input type="checkbox"/> OTHER CHANGE <input checked="" type="checkbox"/> (SPECIFY) AS-DRILLED</p> <p>TARGET FORMATION: MARCELLUS ESTIMATED DEPTH: 7,372' TVD 17,395' TMD</p>	<p>WELL OPERATOR: SWN PRODUCTION COMPANY, LLC</p> <p>ADDRESS: 1300 FORT PIERPONT DRIVE, SUITE 201</p> <p>CITY: MORGANTOWN STATE: WV ZIP CODE: 26508</p> <p>DESIGNATED AGENT: BRITTANY WOODY</p> <p>ADDRESS: 1300 FORT PIERPONT DRIVE, SUITE 201</p> <p>CITY: MORGANTOWN STATE: WV ZIP CODE: 26508</p>

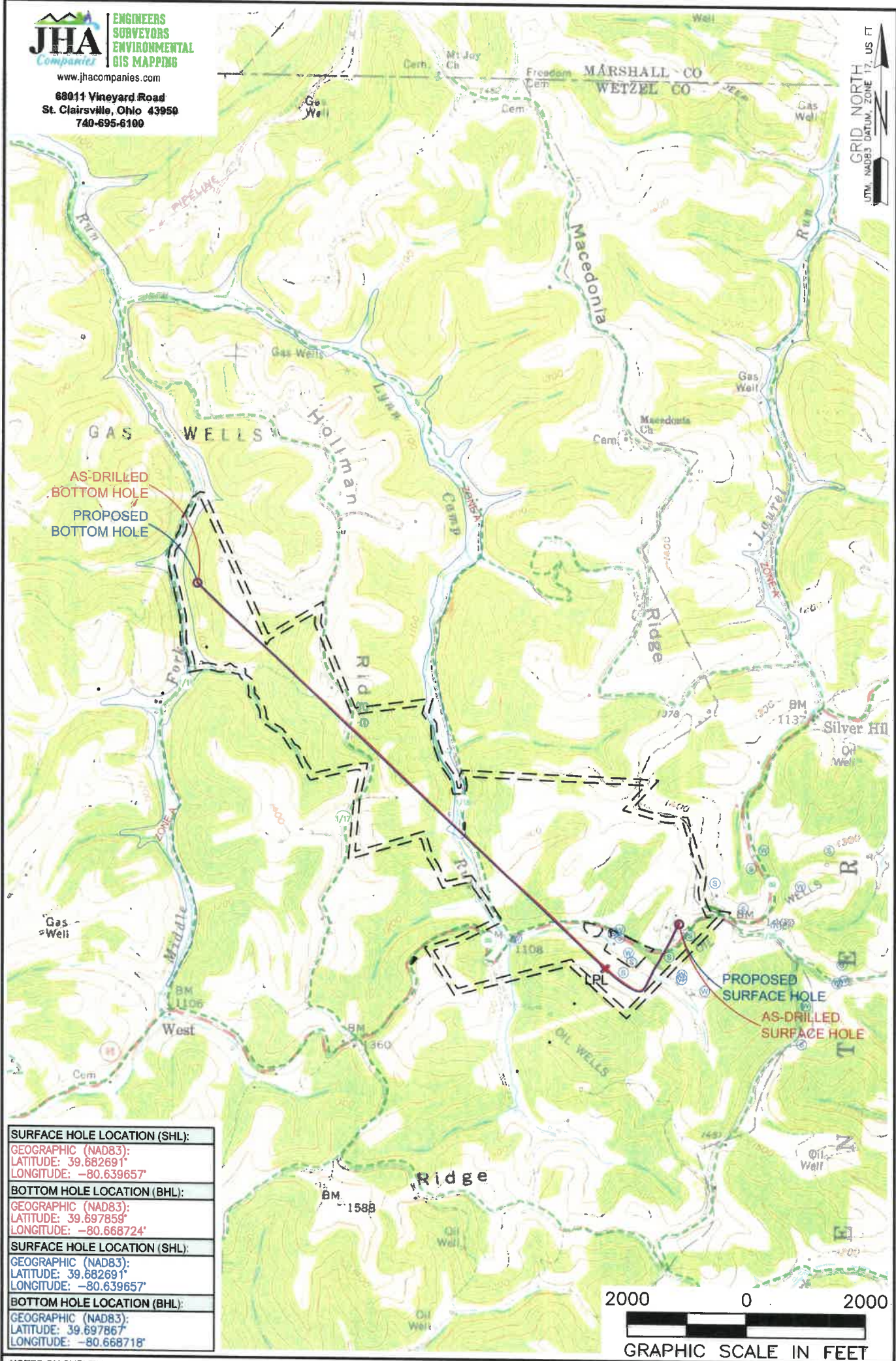
10/14/2022

WELL WORK TABLE FOR SURFACE/REALTY OWNERS		
TRACT	SURFACE OWNER(S) / REALTY OWNER(S)	TAX PARCEL
1	SWN PRODUCTION COMPANY LLC (S) RODNEY CALVERT ET AL (R)	12-10-29
TRACT	SURFACE OWNER	TAX PARCEL
2	CALVERT RODNEY A	12-10-29.5
3	CALVERT RODNEY A	12-10-29.1
4	HAESSLY LAND AND TIMBER LLC	12-10-13
5	SWN PRODUCTION COMPANY LLC	12-10-28
6	SWN PRODUCTION COMPANY LLC	12-10-27
7	RITCHEA ROBERT C & JAMES L	12-10-22
8	SWN PRODUCTION COMPANY LLC	12-10-14
9	RICHMOND CASSIDY PAIGE	12-10-21
10	RICHMOND CASSIDY PAIGE	12-10-13
11	SHULUGA ANDREW D & ANDREA M	12-9-15

ADJOINING OWNERS TABLE		
TRACT	SURFACE OWNER	TAX PARCEL
A	SWN PRODUCTION COMPANY	12-10-29.2
B	YOHO NORMA F	1-7-40
C	RITCHEY MARGARET A	12-15-9
D	DREYER JOSEPH C	12-15-8
E	HAESSLY LAND AND TIMBER LLC	12-15-6
F	HAESSLY LAND AND TIMBER LLC	12-15-5
G	HAESSLY HARDWOOD LUMBER CO	12-10-32
H	SWN PRODUCTION COMPANY LLC	12-10-26
I	HUGGINS JOSEPH DEAN	12-10-25
J	RITCHEA ROBERT C & JAMES L	12-10-24
K	HAESSLY HARDWOOD LUMBER CO	12-10-23
L	HAESSLY LAND AND TIMBER LLC	12-10-20
M	HUGGINS MICHAEL A & PATRICK W	12-9-23
N	GODDARD WAYNE L	12-9-22
O	SHULUGA ANDREW D & ANDREA M	12-9-14
P	SHULUGA ANDREW D & ANDREA M	12-9-13
Q	SHULUGA ANDREW D & ANDREA M	12-9-8
R	SHULUGA ANDREW D & ANDREA M	12-9-9
S	MASSARI MARK	12-4-38
T	SHULUGA ANDREW D & ANDREA M	12-10-1
U	SHULUGA ANDREW D & ANDREA M	12-10-9.1
V	MILLTREE PROPERTIES LLC	12-10-9
W	SWN PRODUCTION COMPANY LLC	12-10-10
X	SWN PRODUCTION COMPANY LLC	12-10-15
Y	YOHO DARREN ETAL	12-10-16
Z	YOHO DARREN ETAL	12-10-18
AA	DURIG CORY B DAVID	1-7-2
AB	CALVERT RODNEY ETAL	12-10-29.1
AC	CALVERT RODNEY A	12-10-29.4

REVISIONS:

COMPANY:		 		10/14/2022
OPERATOR'S		SWN A WTZ		DATE: 03-31-2022
WELL #:		1H		API NO: 47-103-03241
DISTRICT:		COUNTY:	STATE:	DRAWN BY: R. GRIMES
PROCTOR		WETZEL	WV	SCALE: N/A
				DRAWING NO: 2016-519
				WELL LOCATION PLAT



SURFACE HOLE LOCATION (SHL):
GEOGRAPHIC (NAD83): LATITUDE: 39.682691' LONGITUDE: -80.639657'
BOTTOM HOLE LOCATION (BHL):
GEOGRAPHIC (NAD83): LATITUDE: 39.697859' LONGITUDE: -80.668724'
SURFACE HOLE LOCATION (SHL):
GEOGRAPHIC (NAD83): LATITUDE: 39.682691' LONGITUDE: -80.639657'
BOTTOM HOLE LOCATION (BHL):
GEOGRAPHIC (NAD83): LATITUDE: 39.697867' LONGITUDE: -80.668718'

- NOTES ON SURVEY**
1. SURFACE AND ROYALTY OWNER INFORMATION AND THEIR BOUNDARIES SHOWN HEREON WERE PLOTTED FROM DEEDS AND/OR TAX PARCEL MAPS PROVIDED BY CLIENT AND/OR FIELD LOCATIONS.
 2. THIS PLAT DOES NOT REPRESENT A BOUNDARY SURVEY OF THE PARCELS SHOWN HEREON.
 3. ALL INSETS ARE GRID NORTH UNLESS OTHERWISE DEPICTED.

LEGEND:

EXISTING BOTTOM HOLE	ACCESS ROAD
EXISTING / PRODUCING WELLHEAD	FLOOD PLAIN
EXISTING LANDING POINT LOCATION	LEASE BOUNDARY
PROPOSED SURFACE HOLE / BOTTOM HOLE	AS-DRILLED PATH
PROPOSED LANDING POINT LOCATION	PROPOSED PATH

WELL OPERATOR: SWN PRODUCTION COMPANY, LLC	WELL (FARM) NAME: SWN A WTZ	WELL # 1H	SERIAL # XXXX
ADDRESS: 1300 FORT PIERPONT DRIVE, SUITE 201, MORGANTOWN, WV 26508	COUNTY: WETZEL	CODE: 103	DISTRICT: PROCTOR
SURFACE OWNER: SWN PRODUCTION COMPANY, LLC	USGS 7 1/2 QUADRANGLE MAP NAME: WILEYVILLE, WV		
		API # 47-103-3421	

10/14/2022