

Borehole: Original Borehole	Well: HOGE South 6H	Field: WV Wetzel County (NAD 27)	Structure: H&P 608
---------------------------------------	-------------------------------	--	------------------------------

Gravity & Magnetic Parameters Model: HDGM 2022 Dip: 66.423° Date: 11-Mar-2022 MagDec: -7.987° FS: 51814.226mT Gravity FS: 999.304mgal (0.80665 Based)	Surface Location NAD27 West Virginia State Plane, Northern Zone, US Feet Lat: N 39 28 47.01 Northing: 359394.2HUS Grid Conv: -0.763° Lon: W 89 41 47.07 Easting: 1662201.1HUS Scale Fact: 0.99994399	Miscellaneous Slot: HOGE South 6H TVD Ref: RKB (1405.300 ft above MSL) Plan: Tribune Resources HOGE South 6H Rev2 SLS 08Mar22
--	--	--

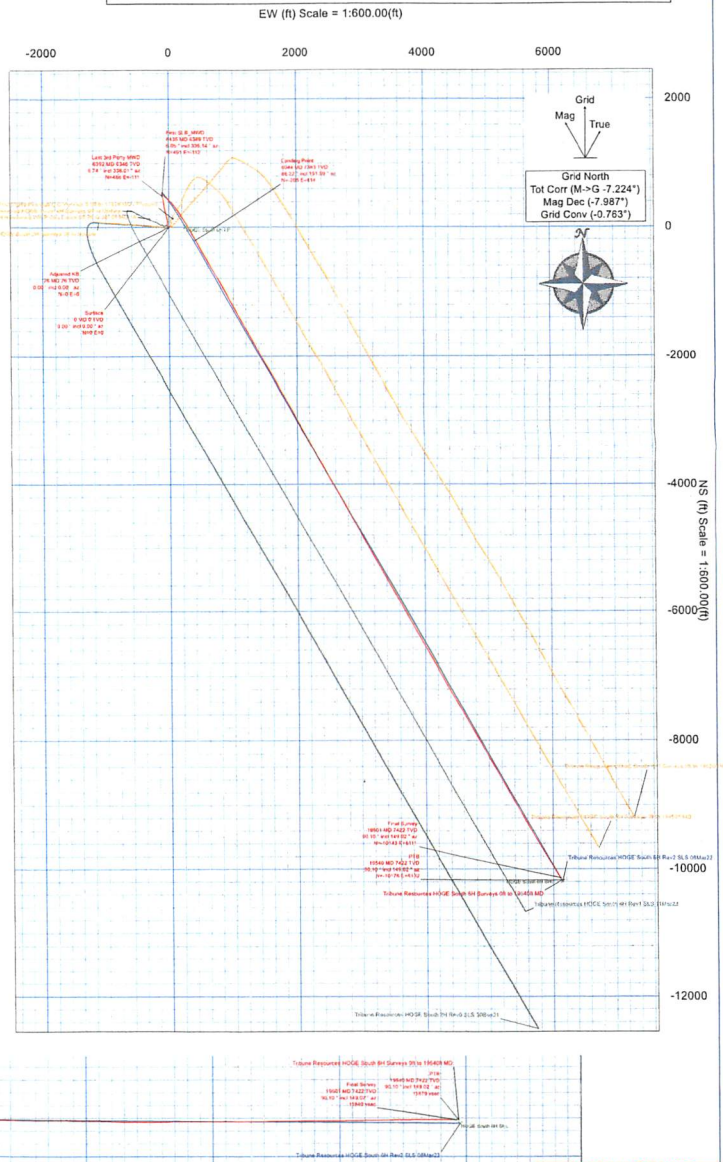
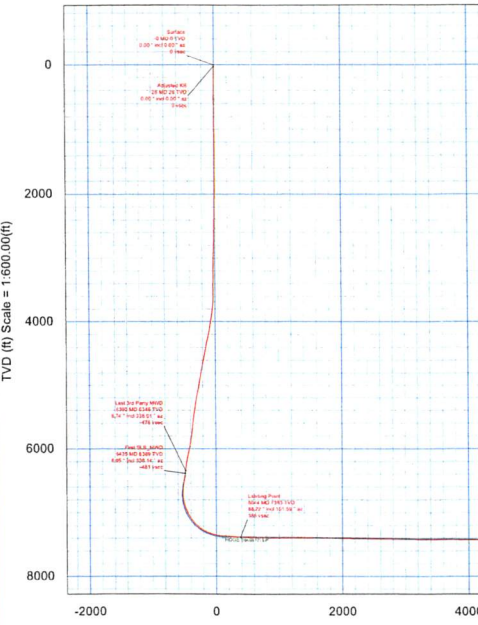
Target Description		Grid Coord		Local Coord						
Target Name	Stage	Dimension	Latitude	Longitude	Northing	Easting	TVD	V5at	NEVP5E	EW(PRE)
HOGE South 6H LP	Point	N/A	N 39 28 47.01	W 89 41 43.79	359398.00	1662208.40	7980.00	123.88	0.40	257.32
HOGE South 6H BH	Point	N/A	N 39 27 7.95	W 87 40 26.98	348588.00	1663446.80	7443.00	11932.32	-13185.18	8146.08

PART No.	Survey Test Code	Vendor/Tool	Probe Size (in)	Case Size (in)	Expected MD From (ft)	MD To (ft)	Survey Frequency (Hz)	EDU Size (ft)	EDU Size (ft)	Comments
1	A01M1_MWD		17.5	13.75	0	100		2.782	2.782	
2	A01M1_MWD		12.25	9.625	500	3000		12.851	12.855	
3	A01M1_MWD		9.75	0	3000	6302.3		24.904	21.930	
4	B00M1_MWD-DGM		30	30	6302.3	19485.200	1195.00	369.712	34.773	

Comments	Survey MD(ft)	Inclination(deg)	Azimuth(deg)	TVD(ft)	V5(ft)	EW(ft)	Sub-Sea TVD	CLS(1/1000)
Surface	0.00	0.00	0.00	0.00	0.00	0.00	-1.405.30	0.00
Adjusted KB	20.30	0.00	20.30	0.00	0.00	0.00	-1.279.00	0.00
Last 3rd Party MWD	6302.30	6.74	236.01	6.346.26	-470.33	488.19	-110.56	4.940.96
First SLS MWD	6.350.00	6.55	338.14	6.308.09	-491.06	490.54	-112.48	4.905.60
Landing Point	6044.00	88.22	151.59	7.383.18	384.84	-205.46	413.83	5.917.88
First Sonar	19301.00	90.10	149.02	7.421.98	11.876.77	-15.142.94	6.111.46	6.016.69
Log	19346.00	90.10	149.02	7.421.91	11.876.77	-15.176.37	6.103.04	6.016.61

RECEIVER
 Office of Oil & Gas
FEB 06
 WV Dept. of Environmental Protection

HOGE South 6H LP	Point	N/A	N 39 28 47.01	W 89 41 43.79	359398.00	1662208.40	7980.00	123.88	0.40	257.32
HOGE South 6H BH	Point	N/A	N 39 27 7.95	W 87 40 26.98	348588.00	1663446.80	7443.00	11932.32	-13185.18	8146.08



CONTROLLED	
Project Ref:	1662201.1HUS
Survey Ref:	1662201.1HUS
Copy Number:	01
Date:	02/06/2023
By:	
Checked:	
Scale:	AS SHOWN

SM
2/14/23