



# ANTERO RESOURCES CORPORATION



Location: Wetzel County, WV  
 Field: Wetzel  
 Facility: Red Lady Pad

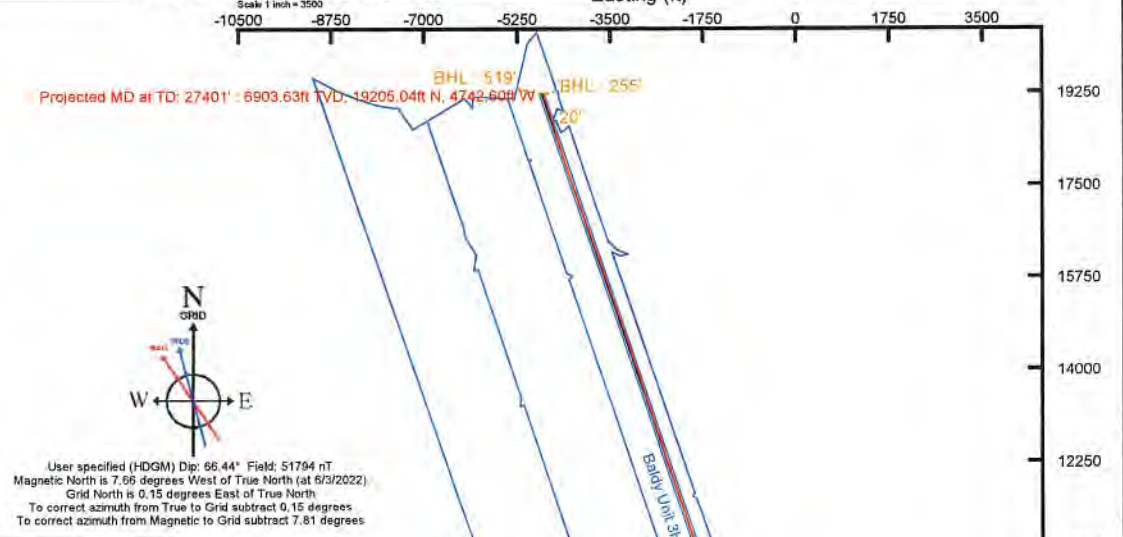
Slot: Slot E  
 Well: Baldy Unit 3H ST01  
 Wellbore: Baldy Unit 3H ST01 PWB

Easting (ft)

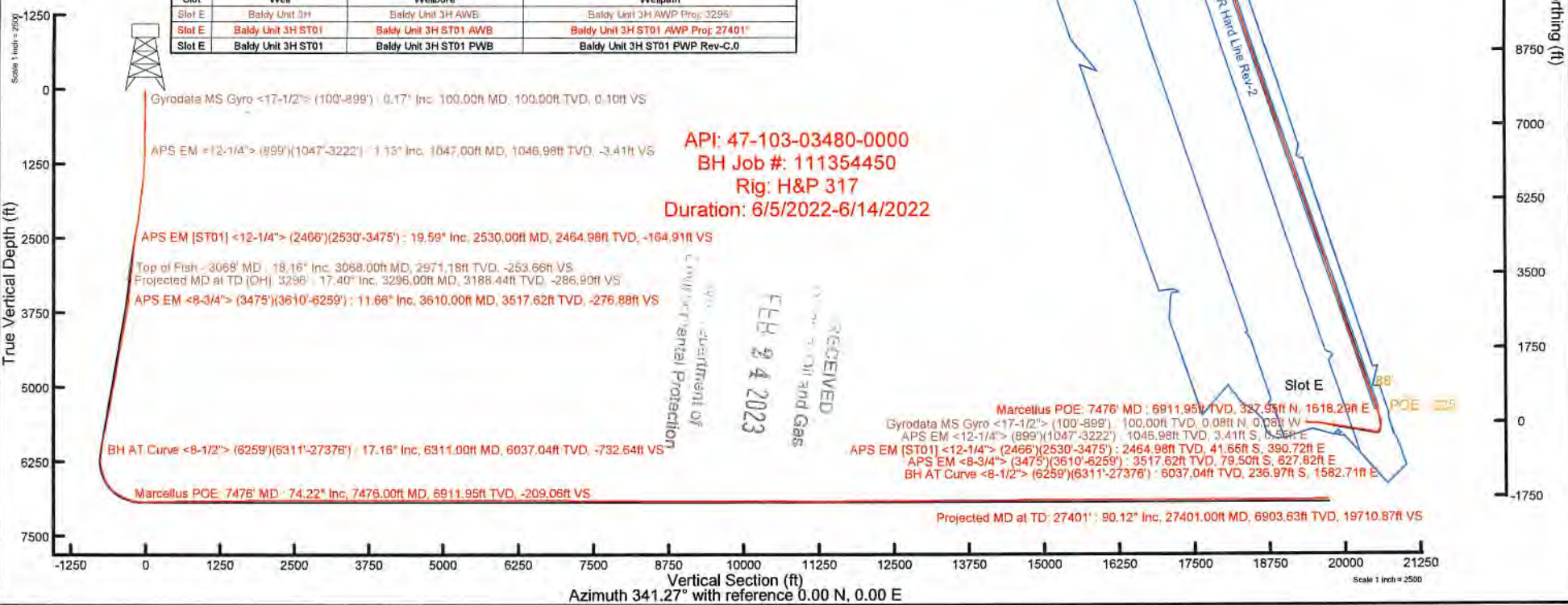
Plot reference wellpath is Baldy Unit 3H ST01 PWP Rev-C.0	Grid System: NAD27 / UTM Zone 17 North, US foot
True vertical depths are referenced to H&P 317 (RKB)	North Reference: Grid north
Reference wellpath measured depths are referenced to H&P 317 (RKB)	Scale: True distance
H&P 317 (RKB) to Mean Sea Level: 1232.5 feet	Coordinates are in feet referenced to Slot
Mean Sea Level to Ground level (At Slot: Slot E): -1207 feet	Depths are in feet
Offset wellpath MDs are referenced to each path's default MD datum	Created by: eduanyc on 2022-06-14; Database: WA_MPL_EASTERHUS_Defn

Location Information					
Facility Name	Grid East (US ft)	Grid North (US ft)	Latitude	Longitude	
Red Lady Pad	1707525.450	14353573.910	39°31'33.9280"N	80°45'43.2459"W	
Slot	Local N (ft)	Local E (ft)	Grid East (US ft)	Grid North (US ft)	Longitude
Slot E	-59.89	3.91	1707529.360	14353514.040	39°31'33.3360"N 80°45'43.1980"W
Comment	Baldy Unit 3H				
H&P 317 (RKB) to Ground level (At Slot: Slot E)	25.5ft				
Mean Sea Level to Ground level (At Slot: Slot E)	-1207ft				
H&P 317 (RKB) to Mean Sea Level	1232.5ft				

Well Profile Data							
Design Comment	MD (ft)	Inc (")	Az (°)	TVD (ft)	Local N (ft)	Local E (ft)	VS (ft)
Tie On	2466.00	21.210	101.520	2405.00	-37.23	368.85	0.29
Sidetrack Point	2510.00	21.185	100.922	2446.02	-40.33	384.46	0.49
Sidetrack / Low-Side	2716.17	15.000	100.922	2641.90	-52.45	447.29	3.00
Hold	3625.24	15.000	100.922	3520.00	-97.03	678.32	0.00
End of 3D Arc	3796.20	20.114	99.614	3682.94	-106.14	729.95	3.00
Curve KOP	6404.47	20.114	99.614	6132.13	-255.94	1613.40	0.00
POE	7458.95	74.217	341.271	6918.00	298.20	1632.92	8.00
Landing Pt	7656.24	90.000	341.271	6945.00	482.68	1570.37	8.00
BHL	27435.60	90.000	341.271	6945.00	19214.70	-4780.61	0.00



Well Data			
Slot	Well	Wellbore	Wellpath
Slot E	Baldy Unit 3H	Baldy Unit 3H AWB	Baldy Unit 3H AWP Proj: 3296'
Slot E	Baldy Unit 3H ST01	Baldy Unit 3H ST01 AWB	Baldy Unit 3H ST01 AWP Proj: 27401'
Slot E	Baldy Unit 3H ST01	Baldy Unit 3H ST01 PWB	Baldy Unit 3H ST01 PWP Rev-C.0



API: 47-103-03480-0000  
 BH Job #: 111354450  
 Rig: H&P 317  
 Duration: 6/5/2022-6/14/2022

RECEIVED  
 FEB 24 2023  
 DEPARTMENT OF  
 ENVIRONMENTAL PROTECTION



# Actual Wellpath Report

Baldy Unit 3H AWP Proj: 3296'  
Page 1 of 5



REFERENCE WELLPATH IDENTIFICATION			
Operator	ANTERO RESOURCES CORPORATION	Well	Baldy Unit 3H
Field	Wetzel	API	47-103-03480-0100
Facility	Red Lady Pad	Wellbore	Baldy Unit 3H AWB
Slot	Slot E		

REPORT SETUP INFORMATION			
Projection System	NAD27 / UTM Zone 17 North, US feet	Software System	WellArchitect® 6.0
North Reference	Grid	User	Edsaryar
Scale	0.999605	Report Generated	6/14/2022 at 1:27:52 PM
Convergence at slot	0.15° East	Database	WA_MPL_EASTERNUS_Defn

WELLPATH LOCATION						
	Local coordinates		Grid coordinates		Geographic coordinates	
	North[ft]	East[ft]	Easting[US ft]	Northing[US ft]	Latitude	Longitude
Slot Location	-59.89	3.91	1707529.36	14353514.04	39°31'33.3360"N	80°45'43.1980"W
Facility Reference Pt			1707525.45	14353573.91	39°31'33.9280"N	80°45'43.2459"W
Field Reference Pt			0.00	0.00	0°00'0.0000"	85°29'19.3013"W

WELLPATH DATUM			
Calculation method	Minimum curvature	H&P 317 (RKB) to Facility Vertical Datum	1232.50ft
Horizontal Reference Pt	Slot	H&P 317 (RKB) to Mean Sea Level	1232.50ft
Vertical Reference Pt	H&P 317 (RKB)	H&P 317 (RKB) to Ground Level at Slot (Slot E)	25.50ft
MD Reference Pt	H&P 317 (RKB)	Section Origin	N 0.00, E 0.00 ft
Field Vertical Reference	Mean Sea Level	Section Azimuth	341.27°

RECEIVED  
 Office of Oil and Gas  
 WV Department of  
 Environmental Protection  
 FEB 24 2023



# Actual Wellpath Report

Baldy Unit 3H AWP Proj: 3296'  
Page 2 of 5



REFERENCE WELLPATH IDENTIFICATION			
Operator	ANTERO RESOURCES CORPORATION	Well	Baldy Unit 3H
Field	Wetzel	API	47-103-03480-0100
Facility	Red Lady Pad	Wellbore	Baldy Unit 3H AWB
Slot	Slot E		

WELLPATH DATA (37 stations) † = interpolated, ‡ = extrapolated station																
MD [ft]	Inclination [°]	Azimuth [°]	TVD [ft]	Vert Sect [ft]	North [ft]	East [ft]	Grid East [US ft]	Grid North [US ft]	Latitude	Longitude	Closure Dist [ft]	Closure Dir [°]	DLS ["/100ft]	Build Rate ["/100ft]	Turn Rate ["/100ft]	Comments
0.00	†	0.000	316.370	0.00	0.00	0.00	1707529.36	14353514.04	39°31'33.3360"N	80°45'43.1980"W	0.00	0.000	0.00	0.00	0.00	
25.50		0.000	316.370	25.50	0.00	0.00	1707529.36	14353514.04	39°31'33.3360"N	80°45'43.1980"W	0.00	0.000	0.00	0.00	0.00	
100.00		0.170	316.370	100.00	0.10	0.08	1707529.28	14353514.12	39°31'33.3368"N	80°45'43.1990"W	0.11	316.370	0.23	0.23	0.00	Gyrodatta MS Gyro <17-1/2"> (100'-899')
200.00		0.230	329.060	200.00	0.43	0.36	1707529.08	14353514.40	39°31'33.3395"N	80°45'43.2016"W	0.46	321.909	0.07	0.06	12.69	
300.00		0.170	88.290	300.00	0.58	0.54	1707529.12	14353514.58	39°31'33.3413"N	80°45'43.2010"W	0.59	336.176	0.35	-0.06	119.23	
400.00		0.090	81.530	400.00	0.53	0.55	1707529.35	14353514.59	39°31'33.3414"N	80°45'43.1982"W	0.55	358.884	0.08	-0.08	-6.76	
500.00		0.340	149.080	500.00	0.22	0.31	1707529.58	14353514.35	39°31'33.3390"N	80°45'43.1952"W	0.38	35.363	0.32	0.25	67.55	
600.00		0.480	160.740	600.00	-0.49	-0.34	1707529.87	14353513.70	39°31'33.3326"N	80°45'43.1915"W	0.61	123.754	0.16	0.14	11.66	
700.00		0.380	196.590	699.99	-1.18	-1.05	1707529.91	14353512.99	39°31'33.3255"N	80°45'43.1910"W	1.19	152.296	0.28	-0.10	35.85	
800.00		0.320	216.110	799.99	-1.61	-1.60	1707529.65	14353512.44	39°31'33.3202"N	80°45'43.1943"W	1.62	169.564	0.13	-0.06	19.52	
899.00		0.490	225.890	898.99	-1.95	-2.12	1707529.19	14353511.93	39°31'33.3151"N	80°45'43.2003"W	2.12	184.665	0.18	0.17	9.88	
1047.00		1.130	125.920	1046.98	-3.41	-3.41	1707529.91	14353510.63	39°31'33.3022"N	80°45'43.1911"W	3.46	170.764	0.88	0.43	-67.55	APS EM <12-1/4"> (899')(1047'-3222')
1141.00		3.260	114.420	1140.90	-5.99	-5.06	1707533.10	14353508.98	39°31'33.2858"N	80°45'43.1505"W	6.29	143.540	2.30	2.27	-12.23	
1236.00		5.580	109.320	1235.62	-10.69	-7.71	1707539.91	14353506.34	39°31'33.2595"N	80°45'43.0636"W	13.07	126.124	2.47	2.44	-5.37	
1330.00		6.460	105.330	1329.10	-16.47	-10.62	1707549.32	14353503.43	39°31'33.2305"N	80°45'42.9435"W	22.62	117.994	1.04	0.94	-4.24	
1425.00		8.180	102.740	1423.32	-22.99	-13.52	1707561.07	14353500.53	39°31'33.2015"N	80°45'42.7937"W	34.48	113.086	1.84	1.81	-2.73	
1520.00		11.290	100.670	1516.94	-31.08	-16.73	1707576.79	14353497.31	39°31'33.1693"N	80°45'42.5930"W	50.32	109.424	3.29	3.27	-2.18	
1614.00		15.270	96.300	1608.41	-40.84	-19.80	1707598.14	14353494.25	39°31'33.1385"N	80°45'42.3206"W	71.60	106.051	4.36	4.23	-4.65	
1709.00		18.990	94.040	1699.18	-52.12	-22.26	1707625.99	14353491.79	39°31'33.1134"N	80°45'41.9651"W	99.20	102.967	3.98	3.92	-2.38	
1803.00		21.280	91.160	1787.43	-63.85	-23.68	1707658.29	14353490.37	39°31'33.0985"N	80°45'41.5528"W	131.14	100.404	2.65	2.44	-3.06	
1898.00		21.960	88.270	1875.75	-74.91	-23.49	1707693.27	14353490.55	39°31'33.0995"N	80°45'41.1062"W	165.65	98.154	1.33	0.72	-3.04	
1992.00		22.160	87.950	1962.87	-85.13	-22.33	1707728.54	14353491.72	39°31'33.1101"N	80°45'40.6559"W	200.51	96.394	0.25	0.21	-0.34	
2087.00		21.320	89.490	2051.11	-95.67	-21.54	1707763.70	14353492.51	39°31'33.1170"N	80°45'40.2070"W	235.42	95.248	1.07	-0.88	1.62	
2182.00		20.980	92.950	2139.72	-107.36	-22.26	1707797.95	14353491.79	39°31'33.1090"N	80°45'39.7699"W	269.61	94.735	1.36	-0.36	3.64	
2276.00		20.690	97.120	2227.57	-120.82	-25.18	1707831.22	14353488.87	39°31'33.0792"N	80°45'39.3452"W	303.03	94.767	1.61	-0.31	4.44	
2371.00		20.980	101.080	2316.37	-136.59	-30.53	1707864.55	14353483.52	39°31'33.0254"N	80°45'38.9199"W	336.71	95.202	1.51	0.31	4.17	
2466.00		21.210	101.520	2405.00	-153.70	-37.23	1707898.07	14353476.82	39°31'32.9583"N	80°45'38.4922"W	370.73	95.764	0.29	0.24	0.46	
2560.00		21.160	100.240	2492.65	-170.48	-43.64	1707931.41	14353470.42	39°31'32.8941"N	80°45'38.0668"W	404.57	96.193	0.49	-0.05	-1.36	
2655.00		20.340	100.990	2581.48	-186.97	-49.84	1707964.48	14353464.22	39°31'32.8320"N	80°45'37.6448"W	438.13	96.532	0.91	-0.86	0.79	
2749.00		19.980	100.950	2669.73	-203.03	-56.00	1707996.27	14353458.06	39°31'32.7702"N	80°45'37.2391"W	470.44	96.837	0.38	-0.38	-0.04	

RECEIVED  
Office of Oil and Gas  
FEB 24 2023  
NY Department of  
Environmental Protection



# Actual Wellpath Report

Baldy Unit 3H AWP Proj: 3296'

Page 3 of 5



REFERENCE WELLPATH IDENTIFICATION				
Operator	ANTERO RESOURCES CORPORATION		Well	Baldy Unit 3H
Field	Wetzel		API	47-103-03480-0100
Facility	Red Lady Pad		Wellbore	Baldy Unit 3H AWB
Slot	Slot E			

WELLPATH DATA (37 stations) † = interpolated, ‡ = extrapolated station																
MD [ft]	Inclination [°]	Azimuth [°]	TVD [ft]	Vert Sect [ft]	North [ft]	East [ft]	Grid East [US ft]	Grid North [US ft]	Latitude	Longitude	Closure Dist [ft]	Closure Dir [°]	DLS ["/100ft]	Build Rate ["/100ft]	Turn Rate ["/100ft]	Comments
2844.00	19.490	98.980	2759.15	-218.43	-61.56	498.68	1708027.85	14353452.50	39°31'32.7145"N	80°45'36.8362"W	502.47	97.037	0.87	-0.52	-2.07	
2938.00	18.920	100.280	2847.92	-233.11	-66.73	529.17	1708058.32	14353447.34	39°31'32.6626"N	80°45'36.4474"W	533.36	97.187	0.76	-0.61	1.38	
3033.00	18.340	101.660	2937.94	-248.14	-72.50	558.96	1708088.10	14353441.57	39°31'32.6048"N	80°45'36.0674"W	563.64	97.390	0.77	-0.61	1.45	
3068.00†	18.161	101.264	2971.18	-253.66	-74.67	569.70	1708098.84	14353439.39	39°31'32.5830"N	80°45'35.9303"W	574.58	97.468	0.62	-0.51	-1.13	Top of Fish - 3068' MD
3127.00	17.860	100.580	3027.29	-262.68	-78.13	587.61	1708116.74	14353435.94	39°31'32.5483"N	80°45'35.7019"W	592.79	97.574	0.62	-0.51	-1.16	
3222.00	17.400	99.320	3117.82	-276.49	-83.11	615.95	1708145.07	14353430.97	39°31'32.4984"N	80°45'35.3404"W	621.53	97.684	0.63	-0.48	-1.33	
3296.00‡	17.400	99.320	3188.44	-286.90	-86.69	637.79	1708166.90	14353427.38	39°31'32.4624"N	80°45'35.0619"W	643.65	97.740	0.00	0.00	0.00	Projected MD at TD [OH]: 3296'

HOLE & CASING SECTIONS - Ref Wellbore: Baldy Unit 3H AWB Ref Wellpath: Baldy Unit 3H AWP Proj: 3296'									
String/Diameter	Start MD [ft]	End MD [ft]	Interval [ft]	Start TVD [ft]	End TVD [ft]	Start N/S [ft]	Start E/W [ft]	End N/S [ft]	End E/W [ft]
20in Conductor	25.50	126.00	100.50	25.50	126.00	0.00	0.00	0.14	-0.13
17.5in Open Hole	126.00	952.00	826.00	126.00	951.99	0.14	-0.13	-2.48	-0.29
13.375in Casing Surface	25.50	932.00	906.50	25.50	931.99	0.00	0.00	-2.33	-0.29
12.25in Open Hole	952.00	3296.00	2344.00	951.99	3188.44	-2.48	-0.29	-86.69	637.79

RECEIVED  
Office of Oil and Gas  
FEB 24 2023  
WV Department of  
Environmental Protection



# Actual Wellpath Report

Baldy Unit 3H AWP Proj: 3296'

Page 4 of 5



REFERENCE WELLPATH IDENTIFICATION			
Operator	ANTERO RESOURCES CORPORATION	Well	Baldy Unit 3H
Field	Wetzel	API	47-103-03480-0100
Facility	Red Lady Pad	Wellbore	Baldy Unit 3H AWB
Slot	Slot E		

TARGETS								
Name	TVD [ft]	North [ft]	East [ft]	Grid East [US ft]	Grid North [US ft]	Latitude	Longitude	Shape
Baldy Unit 3H POE Rev-2	6918.00	298.20	1632.92	1709161.63	14353812.12	39°31'36.2400"N	80°45'22.3493"W	point
Baldy Unit 3H BHL Rev-2	6945.00	19520.99	-4884.46	1702646.84	14373027.28	39°34'46.3897"N	80°46'44.9194"W	point
Baldy Unit 3H BHL Rev-3	6945.00	19214.70	-4780.61	1702750.65	14372721.11	39°34'43.3600"N	80°46'43.6027"W	point
Baldy Unit 3H LP Rev-2	6945.00	482.68	1570.37	1709099.11	14353996.53	39°31'38.0649"N	80°45'23.1412"W	point
Baldy Unit 3H 50' L/R Hard Line Rev-2	7250.00	9756.45	-1573.85	1705956.14	14363266.62	39°33'9.8021"N	80°46'2.9610"W	rectangle
2D Rectangle 19974.2 x 100.								

WELLPATH COMPOSITION - Ref Wellbore: Baldy Unit 3H AWB Ref Wellpath: Baldy Unit 3H AWP Proj: 3296'					
Start MD [ft]	End MD [ft]	Positional Uncertainty Model	Log Name/Comment	Wellbore	Survey Date
25.50	899.00	Gyrodata 2015 - GC+WR+DPIPE	01 Gyrodata MS Gyro <17-1/2"> (100'-899')	Baldy Unit 3H AWB	5/30/2022
899.00	3296.00	BH NaviTrak (2019) (Axial Corr+HRGM)	02 APS EM <12-1/4"> (899')(1047'-3222')	Baldy Unit 3H AWB	5/30/2022

RECEIVED  
 Office of Oil and Gas  
 WV Department of  
 Environmental Protection  
 FEB 24 2023



# Actual Wellpath Report

Baldy Unit 3H AWP Proj: 3296'

Page 5 of 5



## REFERENCE WELLPATH IDENTIFICATION

Operator	ANTERO RESOURCES CORPORATION	Well	Baldy Unit 3H
Field	Wetzel	API	47-103-03480-0100
Facility	Red Lady Pad	Wellbore	Baldy Unit 3H AWB
Slot	Slot E		

## COMMENTS

### Wellpath general comments

API: 47-103-03480-0100

BH Job #: 111354450

Rig: H&P 317

Duration: 6/1/2022-6/2/2022

Gyrodata MS Gyro <17-1/2"> (100'-899')

APS EM <12-1/4"> (899')(1047'-3222')

Projected MD at TD: 3296'

RECEIVED  
Office of Oil and Gas  
FEB 24 2023  
WV Department of Environmental Protection