



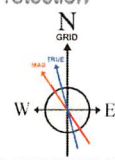
KB Elevation=1310 FT
 Ground Elevation=1277 FT
 All Survey Measurements were taken from KB Elevation

RECEIVED
 Office Of Oil and Gas

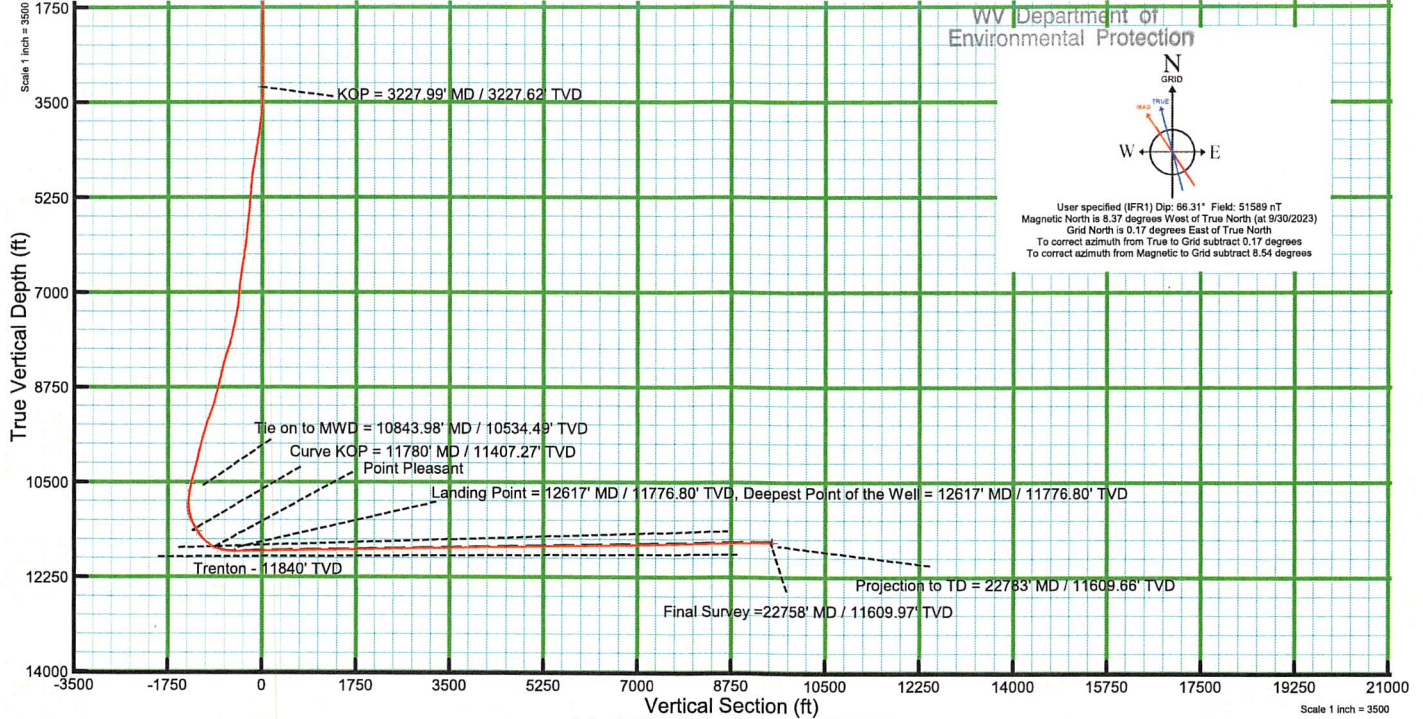
OCT 02 2024



WV Department of
 Environmental Protection



User specified (IFR1) Dip: 86.31° Field: 51589 nT
 Magnetic North is 8.37 degrees West of True North (at 9/30/2023)
 Grid North is 0.17 degrees East of True North
 To correct azimuth from True to Grid subtract 0.17 degrees
 To correct azimuth from Magnetic to Grid subtract 8.54 degrees



Scale 1 inch = 3000

Bottom Hole Location

MD (ft)	Inc (°)	Az (°)	TVD (ft)	Local N (ft)	Local E (ft)	Grid East (US ft)	Grid North (US ft)	Latitude	Longitude
22783.00	90.710	327.490	11609.66	8698.14	-3402.38	1710842.81	14424295.43	39.718326	-80.749507

Landing Point

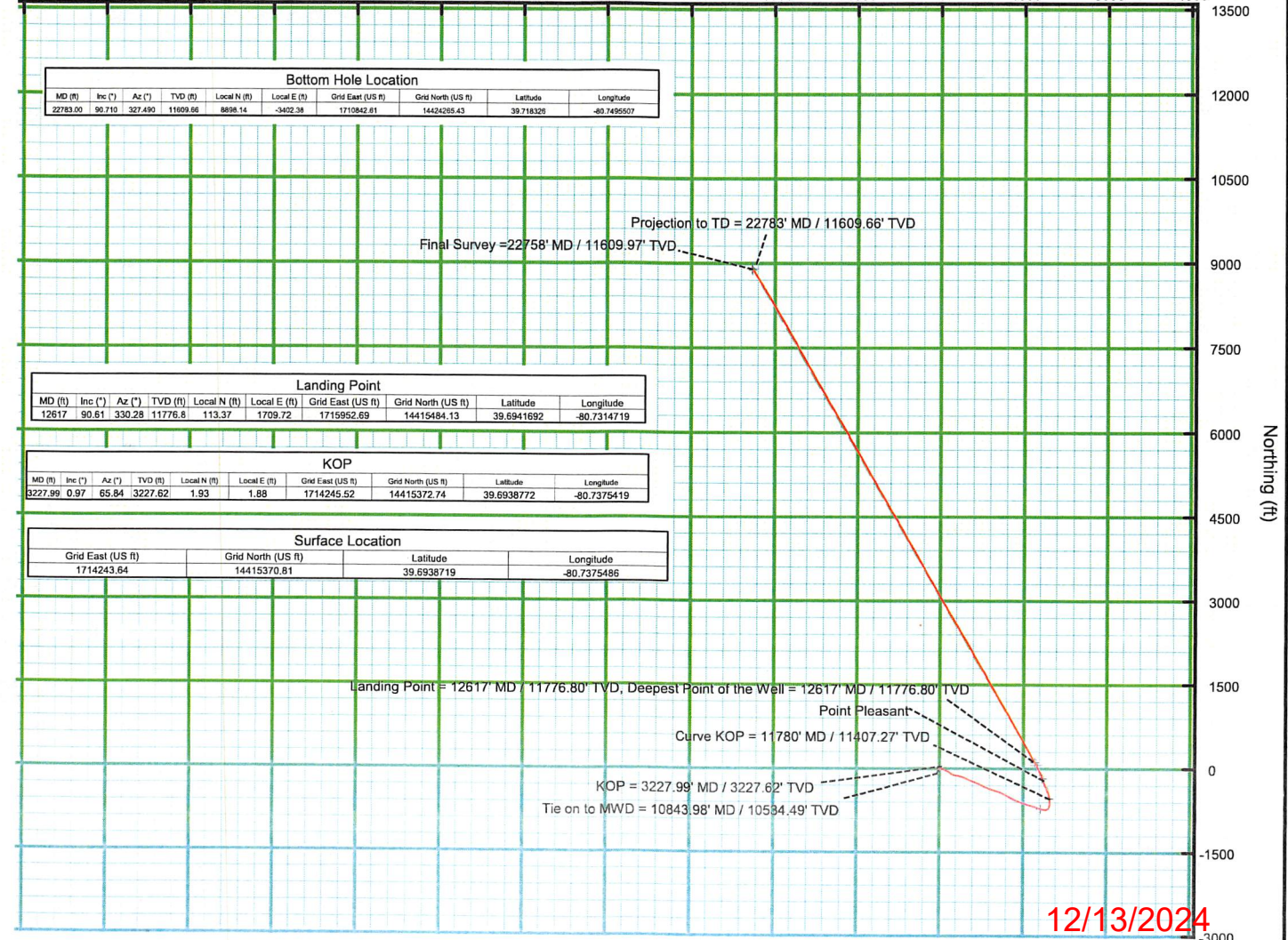
MD (ft)	Inc (°)	Az (°)	TVD (ft)	Local N (ft)	Local E (ft)	Grid East (US ft)	Grid North (US ft)	Latitude	Longitude
12617	90.61	330.28	11776.8	113.37	1709.72	1715952.69	14415484.13	39.6941692	-80.7314719

KOP

MD (ft)	Inc (°)	Az (°)	TVD (ft)	Local N (ft)	Local E (ft)	Grid East (US ft)	Grid North (US ft)	Latitude	Longitude
3227.99	0.97	65.84	3227.62	1.93	1.88	1714245.52	14415372.74	39.6938772	-80.7375419

Surface Location

Grid East (US ft)	Grid North (US ft)	Latitude	Longitude
1714243.64	14415370.81	39.6938719	-80.7375486



12/13/2024



RECEIVED
Office Of Oil and Gas
OCT 02 2024
WV Department of
Environmental Protection

Actual Wellpath Report

Elmer N-17 HU AWP Proj:22783'
Page 1 of 13



REFERENCE WELLPATH IDENTIFICATION			
Operator	EQT (TUG HILL OPERATING, LLC)	Well	Elmer N-17 HU
Field	Wetzel	API	47-103-03505-0000
Facility	Elmer Pad	Wellbore	Elmer N-17 HU AWB
Slot	Slot 17		

REPORT SETUP INFORMATION			
Projection System	NAD83 / UTM Zone 17 North, US feet	Software System	WellArchitect® 6.0
North Reference	Grid	User	Scurdan
Scale	0.999606	Report Generated	10/12/2023 at 8:43:54 AM
Convergence at slot	0.17° East	Database	WA_MPL_EASTERNUS_Defn

WELLPATH LOCATION						
	Local coordinates		Grid coordinates		Geographic coordinates	
	North[ft]	East[ft]	Easting[US ft]	Northing[US ft]	Latitude	Longitude
Slot Location	57.00	35.91	1714243.64	14415370.81	39°41'37.9389"N	80°44'15.1750"W
Facility Reference Pt			1714207.74	14415313.83	39°41'37.3765"N	80°44'15.6366"W
Field Reference Pt			1628437.04	12695896.25	34°58'12.0000"N	81°02'24.0000"W

WELLPATH DATUM			
Calculation method	Minimum curvature	Nabors X08 (RKB) to Facility Vertical Datum	1310.00ft
Horizontal Reference Pt	Slot	Nabors X08 (RKB) to Mean Sea Level	1310.00ft
Vertical Reference Pt	Nabors X08 (RKB)	Nabors X08 (RKB) to Ground Level at Slot (Slot 17)	33.00ft
MD Reference Pt	Nabors X08 (RKB)	Section Origin	N 0.00, E 0.00 ft
Field Vertical Reference	Mean Sea Level	Section Azimuth	339.11°



OCT 02 2024

Actual Wellpath Report

Elmer N-17 HU AWP Proj:22783'



REFERENCE WELLPATH IDENTIFICATION

Operator	EQT (TUG HILL OPERATING, LLC)	Well	Elmer N-17 HU
Field	Wetzel	API	47-103-03505-0000
Facility	Elmer Pad	Wellbore	Elmer N-17 HU AWB
Slot	Slot 17		

WELLPATH DATA (273 stations) † = interpolated, ‡ = extrapolated station

MD [ft]	Inclination [°]	Azimuth [°]	TVD [ft]	Vert Sect [ft]	North [ft]	East [ft]	Grid East [US ft]	Grid North [US ft]	Latitude	Longitude	Closure Dist [ft]	Closure Dir [°]	DLS [°/100ft]	Build Rate [°/100ft]	Turn Rate [°/100ft]
0.00†	0.000	183.900	0.00	0.00	0.00	0.00	1714243.64	14415370.81	39°41'37.9389"N	80°44'15.1750"W	0.00	0.000	0.00	0.00	0.00
33.00	0.000	183.900	33.00	0.00	0.00	0.00	1714243.64	14415370.81	39°41'37.9389"N	80°44'15.1750"W	0.00	0.000	0.00	0.00	0.00
178.00	0.090	183.900	178.00	-0.10	-0.11	-0.01	1714243.63	14415370.70	39°41'37.9377"N	80°44'15.1751"W	0.11	183.900	0.06	0.06	0.00
222.00	0.140	141.640	222.00	-0.19	-0.19	0.02	1714243.66	14415370.62	39°41'37.9370"N	80°44'15.1747"W	0.19	173.028	0.22	0.11	-96.00
266.00	0.030	32.960	266.00	-0.23	-0.22	0.06	1714243.70	14415370.59	39°41'37.9367"N	80°44'15.1742"W	0.23	164.232	0.35	-0.25	-247.00
309.00	0.080	161.330	309.00	-0.25	-0.24	0.08	1714243.72	14415370.57	39°41'37.9365"N	80°44'15.1740"W	0.25	161.982	0.24	0.12	298.50
353.00	0.000	2.340	353.00	-0.28	-0.27	0.09	1714243.73	14415370.54	39°41'37.9362"N	80°44'15.1739"W	0.28	161.912	0.18	-0.18	0.00
398.00	0.100	344.190	398.00	-0.25	-0.23	0.08	1714243.72	14415370.58	39°41'37.9366"N	80°44'15.1740"W	0.25	161.547	0.22	0.22	0.00
442.00	0.040	3.320	442.00	-0.19	-0.18	0.07	1714243.71	14415370.63	39°41'37.9371"N	80°44'15.1741"W	0.19	159.332	0.14	-0.14	43.40
486.00	0.090	26.590	486.00	-0.16	-0.13	0.08	1714243.72	14415370.68	39°41'37.9375"N	80°44'15.1739"W	0.16	147.853	0.13	0.11	52.80
530.00	0.130	19.670	530.00	-0.09	-0.06	0.12	1714243.76	14415370.75	39°41'37.9383"N	80°44'15.1735"W	0.13	115.862	0.10	0.09	-15.70
574.00	0.170	21.030	574.00	-0.01	0.05	0.16	1714243.80	14415370.86	39°41'37.9394"N	80°44'15.1730"W	0.17	71.908	0.09	0.09	3.00
618.00	0.180	15.370	618.00	0.10	0.18	0.20	1714243.84	14415370.99	39°41'37.9406"N	80°44'15.1725"W	0.27	48.018	0.05	0.02	-12.80
662.00	0.360	7.870	662.00	0.27	0.38	0.24	1714243.88	14415371.19	39°41'37.9426"N	80°44'15.1720"W	0.45	31.682	0.42	0.41	-17.00
706.00	0.400	14.820	706.00	0.52	0.67	0.29	1714243.93	14415371.48	39°41'37.9454"N	80°44'15.1712"W	0.73	23.778	0.14	0.09	15.80
750.00	0.420	10.670	750.00	0.78	0.97	0.36	1714244.00	14415371.78	39°41'37.9485"N	80°44'15.1703"W	1.04	20.444	0.08	0.05	-9.40
794.00	0.550	8.860	794.00	1.10	1.34	0.43	1714244.07	14415372.15	39°41'37.9521"N	80°44'15.1695"W	1.41	17.603	0.30	0.30	-4.10
838.00	0.650	11.380	837.99	1.50	1.80	0.51	1714244.15	14415372.60	39°41'37.9566"N	80°44'15.1684"W	1.87	15.786	0.23	0.23	5.70
883.00	0.710	19.970	882.99	1.92	2.31	0.65	1714244.29	14415373.12	39°41'37.9616"N	80°44'15.1666"W	2.40	15.804	0.26	0.13	19.00
927.00	0.620	24.280	926.99	2.30	2.78	0.84	1714244.48	14415373.59	39°41'37.9663"N	80°44'15.1641"W	2.91	16.886	0.23	-0.20	9.80
971.00	0.950	23.270	970.98	2.73	3.33	1.09	1714244.73	14415374.14	39°41'37.9718"N	80°44'15.1610"W	3.51	18.050	0.75	0.75	-2.30
1015.00	0.950	19.860	1014.98	3.26	4.01	1.35	1714244.99	14415374.82	39°41'37.9785"N	80°44'15.1575"W	4.23	18.655	0.13	0.00	-7.70
1059.00	1.030	19.590	1058.97	3.84	4.73	1.61	1714245.25	14415375.53	39°41'37.9855"N	80°44'15.1542"W	4.99	18.817	0.18	0.18	-0.60
1103.00	1.080	21.750	1102.96	4.45	5.48	1.90	1714245.54	14415376.29	39°41'37.9930"N	80°44'15.1505"W	5.80	19.079	0.15	0.11	4.90
1141.00	1.150	23.410	1140.96	4.98	6.17	2.18	1714245.82	14415376.97	39°41'37.9997"N	80°44'15.1469"W	6.54	19.478	0.20	0.18	4.30
1192.00	1.130	19.080	1191.94	5.74	7.11	2.55	1714246.19	14415377.92	39°41'38.0091"N	80°44'15.1421"W	7.55	19.717	0.17	-0.04	-8.40
1236.00	1.160	30.410	1235.94	6.35	7.91	2.92	1714246.55	14415378.71	39°41'38.0169"N	80°44'15.1374"W	8.43	20.246	0.52	0.07	25.70
1280.00	0.790	32.220	1279.93	6.81	8.55	3.30	1714246.94	14415379.35	39°41'38.0232"N	80°44'15.1324"W	9.16	21.131	0.84	-0.84	4.10
1324.00	0.850	28.240	1323.93	7.20	9.09	3.62	1714247.26	14415379.90	39°41'38.0286"N	80°44'15.1284"W	9.78	21.709	0.19	0.14	-9.00
1368.00	0.730	33.840	1367.92	7.58	9.61	3.93	1714247.57	14415380.42	39°41'38.0337"N	80°44'15.1244"W	10.38	22.239	0.32	-0.27	12.70



OCT 02 2024

Actual Wellpath Report

Elmer N-17 HU AWP Proj:22783'

Page 3 of 13



REFERENCE WELLPATH IDENTIFICATION

Operator	EQT (TUG HILL OPERATING, LLC)	Well	Elmer N-17 HU
Field	Wetzel	API	47-103-03505-0000
Facility	Elmer Pad	Wellbore	Elmer N-17 HU AWB
Slot	Slot 17		

WELLPATH DATA (273 stations)

MD [ft]	Inclination [°]	Azimuth [°]	TVD [ft]	Vert Sect [ft]	North [ft]	East [ft]	Grid East [US ft]	Grid North [US ft]	Latitude	Longitude	Closure Dist [ft]	Closure Dir [°]	DLS [°/100ft]	Build Rate [°/100ft]	Turn Rate [°/100ft]
1413.00	0.580	7.890	1412.92	7.94	10.07	4.12	1714247.76	14415380.88	39°41'38.0383"N	80°44'15.1219"W	10.89	22.246	0.73	-0.33	-57.6'
1457.00	0.300	356.400	1456.92	8.25	10.41	4.14	1714247.78	14415381.22	39°41'38.0416"N	80°44'15.1216"W	11.20	21.706	0.66	-0.64	-26.1
1501.00	0.200	252.450	1500.92	8.36	10.50	4.06	1714247.70	14415381.31	39°41'38.0425"N	80°44'15.1226"W	11.26	21.153	0.91	-0.23	-236.2'
1545.00	0.260	230.260	1544.92	8.34	10.42	3.91	1714247.55	14415381.22	39°41'38.0417"N	80°44'15.1245"W	11.13	20.595	0.24	0.14	-50.4'
1589.00	0.520	228.400	1588.92	8.23	10.22	3.69	1714247.33	14415381.02	39°41'38.0397"N	80°44'15.1274"W	10.86	19.843	0.59	0.59	-4.2'
1633.00	0.970	210.020	1632.91	7.93	9.76	3.35	1714246.99	14415380.57	39°41'38.0353"N	80°44'15.1318"W	10.32	18.948	1.15	1.02	-41.7'
1677.00	1.730	216.230	1676.90	7.33	8.91	2.77	1714246.41	14415379.71	39°41'38.0268"N	80°44'15.1392"W	9.33	17.296	1.76	1.73	14.1
1721.00	1.750	216.900	1720.88	6.61	7.83	1.98	1714245.62	14415378.64	39°41'38.0162"N	80°44'15.1494"W	8.08	14.167	0.06	0.05	1.5'
1765.00	2.220	217.180	1764.85	5.80	6.62	1.06	1714244.70	14415377.42	39°41'38.0042"N	80°44'15.1612"W	6.70	9.092	1.07	1.07	0.6'
1809.00	2.420	211.090	1808.82	4.78	5.14	0.06	1714243.70	14415375.95	39°41'37.9897"N	80°44'15.1740"W	5.14	0.714	0.72	0.45	-13.8'
1853.00	2.380	217.700	1852.78	3.73	3.62	-0.97	1714242.67	14415374.43	39°41'37.9747"N	80°44'15.1873"W	3.75	344.950	0.64	-0.09	15.0'
1897.00	2.350	221.440	1896.74	2.84	2.22	-2.13	1714241.51	14415373.03	39°41'37.9609"N	80°44'15.2022"W	3.08	316.242	0.36	-0.07	8.5'
1941.00	2.080	209.400	1940.71	1.91	0.85	-3.12	1714240.52	14415371.66	39°41'37.9474"N	80°44'15.2149"W	3.23	285.286	1.22	-0.61	-27.3'
1985.00	1.670	204.460	1984.68	0.95	-0.43	-3.78	1714239.87	14415370.38	39°41'37.9347"N	80°44'15.2233"W	3.80	263.552	1.00	-0.93	-11.2'
2029.00	1.030	211.680	2028.67	0.26	-1.35	-4.25	1714239.39	14415369.46	39°41'37.9257"N	80°44'15.2294"W	4.46	252.414	1.50	-1.45	16.4'
2073.00	0.770	186.770	2072.67	-0.25	-1.98	-4.49	1714239.15	14415368.83	39°41'37.9194"N	80°44'15.2325"W	4.91	246.245	1.05	-0.59	-56.6'
2117.00	0.510	189.180	2116.66	-0.68	-2.46	-4.56	1714239.08	14415368.35	39°41'37.9146"N	80°44'15.2334"W	5.18	241.606	0.59	-0.59	5.4'
2161.00	0.060	40.510	2160.66	-0.84	-2.64	-4.57	1714239.07	14415368.17	39°41'37.9129"N	80°44'15.2336"W	5.28	240.012	1.28	-1.02	-337.8'
2205.00	0.280	97.920	2204.66	-0.88	-2.64	-4.45	1714239.19	14415368.17	39°41'37.9129"N	80°44'15.2321"W	5.18	239.366	0.57	0.50	130.4'
2249.00	0.380	54.890	2248.66	-0.89	-2.57	-4.23	1714239.41	14415368.24	39°41'37.9136"N	80°44'15.2292"W	4.95	238.722	0.59	0.23	-97.8'
2293.00	0.490	66.240	2292.66	-0.85	-2.41	-3.94	1714239.71	14415368.40	39°41'37.9152"N	80°44'15.2254"W	4.61	238.537	0.32	0.25	25.8'
2337.00	0.350	94.540	2336.66	-0.89	-2.34	-3.63	1714240.01	14415368.47	39°41'37.9158"N	80°44'15.2215"W	4.32	237.155	0.56	-0.32	64.3'
2381.00	0.350	70.350	2380.66	-0.96	-2.31	-3.37	1714240.27	14415368.50	39°41'37.9161"N	80°44'15.2182"W	4.08	235.580	0.33	0.00	-54.9'
2426.00	0.430	82.300	2425.66	-1.00	-2.24	-3.07	1714240.57	14415368.57	39°41'37.9168"N	80°44'15.2144"W	3.80	233.907	0.25	0.18	26.5'
2470.00	0.370	52.190	2469.66	-0.99	-2.13	-2.80	1714240.84	14415368.68	39°41'37.9179"N	80°44'15.2109"W	3.52	232.697	0.49	-0.14	-68.4'
2513.99	0.590	47.890	2513.65	-0.87	-1.89	-2.52	1714241.12	14415368.92	39°41'37.9202"N	80°44'15.2073"W	3.15	233.065	0.51	0.50	-9.7'
2558.99	0.530	56.770	2558.64	-0.74	-1.62	-2.17	1714241.47	14415369.19	39°41'37.9229"N	80°44'15.2028"W	2.71	233.223	0.23	-0.13	19.7'
2602.99	0.520	51.040	2602.64	-0.64	-1.39	-1.84	1714241.80	14415369.43	39°41'37.9252"N	80°44'15.1987"W	2.31	233.099	0.12	-0.02	-13.0'
3133.99	0.340	37.400	3133.63	0.94	1.38	0.99	1714244.63	14415372.19	39°41'37.9525"N	80°44'15.1623"W	1.70	35.511	0.04	-0.03	-2.5'
3227.99	0.970	65.840	3227.62	1.13	1.93	1.88	1714245.52	14415372.74	39°41'37.9579"N	80°44'15.1509"W	2.69	44.285	0.73	0.67	30.2'



RECEIVED
Office Of Oil and Gas

OCT 02 2024

WV Department of
Environmental Protection

Actual Wellpath Report

Elmer N-17 HU AWP Proj:22783'

Page 4 of 13



REFERENCE WELLPATH IDENTIFICATION

Operator	EQT (TUG HILL OPERATING, LLC)	Well	Elmer N-17 HU
Field	Wetzel	API	47-103-03505-0000
Facility	Elmer Pad	Wellbore	Elmer N-17 HU AWB
Slot	Slot 17		

WELLPATH DATA (273 stations)

MD [ft]	Inclination [°]	Azimuth [°]	TVD [ft]	Vert Sect [ft]	North [ft]	East [ft]	Grid East [US ft]	Grid North [US ft]	Latitude	Longitude	Closure Dist [ft]	Closure Dir [°]	DLS [°/100ft]	Build Rate [°/100ft]	Turn Rate [°/100ft]
3321.99	2.260	82.600	3321.58	0.74	2.49	4.45	1714248.08	14415373.30	39°41'37.9634"N	80°44'15.1180"W	5.10	60.713	1.45	1.37	17.8:
3415.99	3.710	82.700	3415.45	-0.40	3.12	9.30	1714252.94	14415373.93	39°41'37.9694"N	80°44'15.0559"W	9.81	71.463	1.54	1.54	0.1
3510.99	5.180	95.280	3510.16	-3.02	3.11	16.62	1714260.25	14415373.92	39°41'37.9692"N	80°44'14.9623"W	16.91	79.387	1.85	1.55	13.2:
3604.99	6.510	108.470	3603.68	-8.27	1.04	25.90	1714269.53	14415371.85	39°41'37.9483"N	80°44'14.8436"W	25.92	87.711	2.00	1.41	14.0:
3698.99	7.880	106.130	3696.94	-15.53	-2.44	37.14	1714280.77	14415368.37	39°41'37.9136"N	80°44'14.6999"W	37.23	93.763	1.49	1.46	-2.4:
3793.99	9.860	108.750	3790.80	-24.64	-6.87	51.10	1714294.72	14415363.95	39°41'37.8695"N	80°44'14.5215"W	51.56	97.653	2.13	2.08	2.7:
3887.99	11.210	111.340	3883.21	-35.91	-12.78	67.24	1714310.85	14415358.04	39°41'37.8106"N	80°44'14.3153"W	68.44	100.762	1.52	1.44	2.7:
3981.99	11.380	115.510	3975.39	-48.77	-20.10	84.12	1714327.72	14415350.72	39°41'37.7378"N	80°44'14.0997"W	86.49	103.438	0.89	0.18	4.4:
4075.99	10.960	110.350	4067.61	-61.38	-27.20	100.87	1714344.47	14415343.62	39°41'37.6671"N	80°44'13.8857"W	104.47	105.092	1.15	-0.45	-5.4:
4169.99	11.070	114.490	4159.88	-73.69	-34.05	117.46	1714361.05	14415336.77	39°41'37.5990"N	80°44'13.6737"W	122.29	106.166	0.85	0.12	4.4:
4263.99	11.720	118.700	4252.03	-87.39	-42.37	134.04	1714377.63	14415328.45	39°41'37.5162"N	80°44'13.4618"W	140.58	107.543	1.12	0.69	4.4:
4357.99	11.350	114.320	4344.13	-101.22	-50.77	150.85	1714394.43	14415320.06	39°41'37.4328"N	80°44'13.2472"W	159.16	108.601	1.01	-0.39	-4.6:
4452.99	11.920	123.340	4437.19	-115.82	-60.01	167.56	1714411.14	14415310.82	39°41'37.3409"N	80°44'13.0337"W	177.99	109.705	2.00	0.60	9.4:
4546.99	12.410	126.940	4529.08	-132.24	-71.42	183.75	1714427.31	14415299.42	39°41'37.2277"N	80°44'12.8271"W	197.14	111.240	0.96	0.52	3.8:
4640.99	11.980	128.200	4620.96	-149.16	-83.52	199.49	1714443.05	14415287.32	39°41'37.1077"N	80°44'12.6262"W	216.27	112.718	0.54	-0.46	1.3:
4734.99	10.780	127.040	4713.11	-164.98	-94.85	214.17	1714457.73	14415276.00	39°41'36.9953"N	80°44'12.4388"W	234.23	113.887	1.30	-1.28	-1.2:
4829.99	10.180	124.820	4806.52	-179.45	-105.00	228.15	1714471.70	14415265.86	39°41'36.8946"N	80°44'12.2602"W	251.15	114.712	0.76	-0.63	-2.3:
4869.99	10.240	119.910	4845.89	-185.12	-108.79	234.14	1714477.69	14415262.07	39°41'36.8570"N	80°44'12.1838"W	258.18	114.921	2.18	0.15	-12.2:
4923.99	9.650	107.240	4899.08	-191.64	-112.52	242.62	1714486.17	14415258.33	39°41'36.8198"N	80°44'12.0754"W	267.45	114.881	4.19	-1.09	-23.4:
5017.99	8.080	99.250	4991.96	-199.82	-115.92	256.67	1714500.21	14415254.94	39°41'36.7858"N	80°44'11.8959"W	281.63	114.305	2.12	-1.67	-8.5:
5111.99	8.250	101.320	5085.01	-206.73	-118.30	269.80	1714513.34	14415252.55	39°41'36.7619"N	80°44'11.7280"W	294.60	113.677	0.36	0.18	2.2:
5205.99	8.740	104.320	5177.98	-214.45	-121.40	283.34	1714526.86	14415249.46	39°41'36.7309"N	80°44'11.5550"W	308.25	113.193	0.70	0.52	3.1:
5299.99	8.540	101.340	5270.91	-222.29	-124.53	297.10	1714540.62	14415246.33	39°41'36.6995"N	80°44'11.3790"W	322.14	112.742	0.52	-0.21	-3.1:
5393.99	8.910	97.840	5363.83	-229.51	-126.90	311.15	1714554.67	14415243.96	39°41'36.6757"N	80°44'11.1993"W	336.04	112.187	0.69	0.39	-3.7:
5487.99	10.160	97.340	5456.52	-236.93	-128.95	326.59	1714570.10	14415241.91	39°41'36.6550"N	80°44'11.0019"W	351.12	111.546	1.33	1.33	-0.5:
5581.99	10.950	104.680	5548.94	-246.04	-132.27	343.45	1714586.95	14415238.59	39°41'36.6217"N	80°44'10.7864"W	368.04	111.063	1.66	0.84	7.8:
5675.99	10.680	110.810	5641.27	-257.03	-137.63	360.23	1714603.72	14415233.23	39°41'36.5682"N	80°44'10.5719"W	385.62	110.910	1.26	-0.29	6.5:
5768.99	9.140	108.760	5732.88	-267.48	-143.07	375.28	1714618.77	14415227.80	39°41'36.5141"N	80°44'10.3796"W	401.62	110.868	1.70	-1.66	-2.2:
5862.99	8.800	102.910	5825.73	-276.24	-147.08	389.36	1714632.84	14415223.79	39°41'36.4741"N	80°44'10.1997"W	416.21	110.694	1.04	-0.36	-6.2:
5957.99	9.780	101.000	5919.49	-284.55	-150.24	404.36	1714647.84	14415220.63	39°41'36.4424"N	80°44'10.0078"W	431.37	110.382	1.08	1.03	-2.0:



RECEIVED
Office Of Oil and Gas
OCT 02 2024

Actual Wellpath Report

Elmer N-17 HU AWP Proj:22783'

Page 5 of 13



REFERENCE WELLPATH IDENTIFICATION

Operator	EQT (TUG HILL OPERATING, LLC)	Well	Elmer N-17 HU
Field	Wetzel	API	47-103-03505-0000
Facility	Elmer Pad	Wellbore	Elmer N-17 HU AWB
Slot	Slot 17		

WELLPATH DATA (273 stations)

MD [ft]	Inclination [°]	Azimuth [°]	TVD [ft]	Vert Sect [ft]	North [ft]	East [ft]	Grid East [US ft]	Grid North [US ft]	Latitude	Longitude	Closure Dist [ft]	Closure Dir [°]	DLS [°/100ft]	Build Rate [°/100ft]	Turn Rate [°/100ft]
6050.99	11.110	107.770	6010.95	-294.32	-154.48	420.65	1714664.12	14415216.39	39°41'36.4000"N	80°44'9.7996"W	448.12	110.166	1.94	1.43	7.2
6143.99	12.630	113.540	6101.96	-307.03	-161.28	438.50	1714681.97	14415209.60	39°41'36.3323"N	80°44'9.5715"W	467.22	110.193	2.07	1.63	6.2
6237.99	10.580	113.570	6194.03	-320.27	-168.83	455.84	1714699.30	14415202.04	39°41'36.2571"N	80°44'9.3500"W	486.10	110.324	2.18	-2.18	0.0
6331.99	9.760	115.240	6286.55	-332.06	-175.68	470.95	1714714.41	14415195.20	39°41'36.1890"N	80°44'9.1569"W	502.65	110.457	0.93	-0.87	1.7
6425.99	9.980	117.390	6379.16	-343.89	-182.83	485.39	1714728.84	14415188.06	39°41'36.1179"N	80°44'8.9724"W	518.68	110.639	0.46	0.23	2.2
6520.99	11.450	117.280	6472.50	-357.06	-190.94	501.08	1714744.52	14415179.95	39°41'36.0373"N	80°44'8.7720"W	536.23	110.859	1.55	1.55	-0.1
6613.99	11.200	113.270	6563.70	-370.23	-198.73	517.58	1714761.02	14415172.15	39°41'35.9598"N	80°44'8.5612"W	554.43	111.005	0.89	-0.27	-4.3
6707.99	9.980	114.470	6656.09	-382.38	-205.72	533.38	1714776.81	14415165.18	39°41'35.8903"N	80°44'8.3594"W	571.68	111.091	1.32	-1.30	1.2
6800.99	11.410	114.040	6747.47	-394.62	-212.80	549.12	1714792.54	14415158.09	39°41'35.8199"N	80°44'8.1583"W	588.91	111.183	1.54	1.54	-0.4
6891.99	8.350	110.260	6837.12	-405.32	-218.76	563.54	1714806.96	14415152.14	39°41'35.7606"N	80°44'7.9740"W	604.51	111.215	3.44	-3.36	-4.1
6985.99	7.350	109.250	6930.23	-413.69	-223.10	575.62	1714819.04	14415147.80	39°41'35.7173"N	80°44'7.8197"W	617.35	111.186	1.07	-1.06	-1.0
7001.99	7.370	108.500	6946.10	-415.00	-223.77	577.56	1714820.98	14415147.13	39°41'35.7107"N	80°44'7.7949"W	619.40	111.178	0.61	0.13	-4.6
7084.99	7.760	109.830	7028.38	-422.04	-227.36	587.88	1714831.29	14415143.54	39°41'35.6749"N	80°44'7.6630"W	630.32	111.143	0.52	0.47	1.6
7178.99	9.510	111.270	7121.31	-431.39	-232.33	601.09	1714844.49	14415138.58	39°41'35.6254"N	80°44'7.4942"W	644.43	111.132	1.88	1.86	1.5
7273.99	10.990	112.060	7214.79	-442.83	-238.57	616.80	1714860.19	14415132.33	39°41'35.5632"N	80°44'7.2935"W	661.33	111.146	1.56	1.56	0.8
7367.99	12.910	111.690	7306.75	-456.04	-245.82	634.86	1714878.25	14415125.09	39°41'35.4910"N	80°44'7.0627"W	680.79	111.167	2.04	2.04	-0.3
7462.99	14.730	112.490	7399.00	-471.52	-254.36	655.88	1714899.26	14415116.55	39°41'35.4060"N	80°44'6.7941"W	703.48	111.197	1.93	1.92	0.8
7555.98	16.610	113.240	7488.53	-488.89	-264.13	679.02	1714922.39	14415106.78	39°41'35.3088"N	80°44'6.4985"W	728.58	111.256	2.03	2.02	0.8
7649.98	17.480	114.280	7578.40	-508.26	-275.24	704.23	1714947.60	14415095.68	39°41'35.1983"N	80°44'6.1764"W	756.11	111.347	0.98	0.93	1.1
7742.98	18.430	114.670	7666.87	-528.66	-287.12	730.33	1714973.68	14415083.81	39°41'35.0801"N	80°44'5.8431"W	784.74	111.462	1.03	1.02	0.4
7836.98	19.390	113.460	7755.79	-550.18	-299.53	758.14	1715001.48	14415071.40	39°41'34.9566"N	80°44'5.4877"W	815.17	111.558	1.10	1.02	-1.2
7930.98	20.090	114.020	7844.27	-572.48	-312.32	787.20	1715030.53	14415058.62	39°41'34.8294"N	80°44'5.1164"W	846.89	111.640	0.77	0.74	0.6
8024.98	22.410	113.340	7931.87	-596.38	-325.99	818.41	1715061.72	14415044.95	39°41'34.6934"N	80°44'4.7178"W	880.94	111.718	2.48	2.47	-0.7
8118.98	24.620	112.990	8018.06	-622.46	-340.74	852.89	1715096.19	14415030.21	39°41'34.5466"N	80°44'4.2772"W	918.43	111.777	2.36	2.35	-0.3
8213.98	24.900	113.050	8104.33	-650.05	-356.30	889.51	1715132.79	14415014.66	39°41'34.3918"N	80°44'3.8094"W	958.21	111.829	0.30	0.29	0.0
8307.98	24.930	109.110	8189.58	-676.52	-370.53	926.44	1715169.71	14415000.43	39°41'34.2500"N	80°44'3.3375"W	997.79	111.799	1.77	0.03	-4.1
8401.98	22.490	108.200	8275.64	-700.59	-382.63	962.24	1715205.50	14414988.33	39°41'34.1294"N	80°44'2.8799"W	1035.53	111.685	2.62	-2.60	-0.9
8495.98	21.880	107.780	8362.68	-722.87	-393.60	996.00	1715239.24	14414977.37	39°41'34.0200"N	80°44'2.4485"W	1070.95	111.563	0.67	-0.65	-0.4
8588.98	21.130	106.380	8449.21	-743.85	-403.62	1028.58	1715271.82	14414967.35	39°41'33.9200"N	80°44'2.0320"W	1104.94	111.425	0.98	-0.81	-1.5
8682.98	21.450	108.850	8536.80	-765.10	-413.95	1061.10	1715304.32	14414957.03	39°41'33.8170"N	80°44'1.6164"W	1138.99	111.311	1.01	0.34	2.6



RECEIVED
Office Of Oil and Gas

OCT 02 2024

WV Department of
Environmental Protection

Actual Wellpath Report

Elmer N-17 HU AWP Proj:22783'

Page 6 of 13



REFERENCE WELLPATH IDENTIFICATION

Operator	EQT (TUG HILL OPERATING, LLC)	Well	Elmer N-17 HU
Field	Wetzel	API	47-103-03505-0000
Facility	Elmer Pad	Wellbore	Elmer N-17 HU AWB
Slot	Slot 17		

WELLPATH DATA (273 stations)

MD [ft]	Inclination [°]	Azimuth [°]	TVD [ft]	Vert Sect [ft]	North [ft]	East [ft]	Grid East [US ft]	Grid North [US ft]	Latitude	Longitude	Closure Dist [ft]	Closure Dir [°]	DLS [°/100ft]	Build Rate [°/100ft]	Turn Rate [°/100ft]
8777.98	20.770	112.400	8625.42	-787.76	-425.98	1093.12	1715336.32	14414945.00	39°41'33.6971"N	80°44'1.2073"W	1173.19	111.290	1.52	-0.72	3.7
8874.98	18.810	114.780	8716.69	-810.74	-439.09	1123.22	1715366.42	14414931.89	39°41'33.5667"N	80°44'0.8227"W	1205.99	111.352	2.18	-2.02	2.4
8968.98	17.460	116.280	8806.02	-831.92	-451.69	1149.62	1715392.81	14414919.30	39°41'33.4414"N	80°44'0.4854"W	1235.17	111.450	1.52	-1.44	1.6
9061.98	18.630	119.130	8894.45	-853.54	-465.09	1175.11	1715418.29	14414905.90	39°41'33.3082"N	80°44'0.1599"W	1263.80	111.593	1.58	1.26	3.0
9154.98	19.440	119.770	8982.36	-876.89	-480.01	1201.52	1715444.69	14414890.99	39°41'33.1600"N	80°43'59.8226"W	1293.86	111.777	0.90	0.87	0.6
9248.98	21.800	119.470	9070.33	-902.43	-496.37	1230.30	1715473.45	14414874.64	39°41'32.9975"N	80°43'59.4551"W	1326.66	111.972	2.51	2.51	-0.3
9341.98	24.640	117.280	9155.79	-930.18	-513.75	1262.57	1715505.71	14414857.26	39°41'32.8247"N	80°43'59.0429"W	1363.09	112.142	3.19	3.05	-2.3
9435.98	26.660	115.940	9240.53	-960.17	-531.96	1298.96	1715542.08	14414839.06	39°41'32.6437"N	80°43'58.5782"W	1403.66	112.270	2.24	2.15	-1.4
9529.98	27.030	116.020	9324.40	-991.15	-550.55	1337.11	1715580.22	14414820.47	39°41'32.4588"N	80°43'58.0908"W	1446.02	112.379	0.40	0.39	0.0
9623.98	26.820	114.180	9408.21	-1021.76	-568.61	1375.65	1715618.75	14414802.42	39°41'32.2792"N	80°43'57.5984"W	1488.54	112.457	0.91	-0.22	-1.9
9717.98	24.000	112.340	9493.11	-1049.87	-584.57	1412.69	1715655.77	14414786.47	39°41'32.1205"N	80°43'57.1253"W	1528.86	112.480	3.12	-3.00	-1.9
9808.98	23.600	110.120	9576.37	-1074.50	-597.87	1446.91	1715689.98	14414773.18	39°41'31.9880"N	80°43'56.6880"W	1565.57	112.451	1.08	-0.44	-2.4
9902.98	22.460	110.120	9662.88	-1098.63	-610.52	1481.44	1715724.50	14414760.53	39°41'31.8620"N	80°43'56.2468"W	1602.31	112.397	1.21	-1.21	0.0
9997.98	21.760	109.060	9750.89	-1121.85	-622.51	1515.13	1715758.17	14414748.55	39°41'31.7425"N	80°43'55.8163"W	1638.02	112.336	0.85	-0.74	-1.1
10091.98	22.200	108.180	9838.06	-1144.23	-633.74	1548.47	1715791.49	14414737.32	39°41'31.6305"N	80°43'55.3903"W	1673.13	112.258	0.58	0.47	-0.9
10185.98	21.580	107.480	9925.28	-1166.15	-644.47	1581.83	1715824.84	14414726.59	39°41'31.5234"N	80°43'54.9639"W	1708.08	112.167	0.72	-0.66	-0.7
10280.98	21.410	106.160	10013.67	-1187.44	-654.55	1615.15	1715858.15	14414716.52	39°41'31.4229"N	80°43'54.5381"W	1742.74	112.061	0.54	-0.18	-1.3
10374.98	21.630	106.950	10101.12	-1208.41	-664.37	1648.20	1715891.18	14414706.70	39°41'31.3248"N	80°43'54.1156"W	1777.06	111.954	0.39	0.23	0.8
10468.98	22.590	107.300	10188.21	-1230.20	-674.79	1682.01	1715924.98	14414696.28	39°41'31.2208"N	80°43'53.6835"W	1812.32	111.860	1.03	1.02	0.3
10561.98	23.470	107.920	10273.79	-1252.85	-685.80	1716.68	1715959.64	14414685.28	39°41'31.1110"N	80°43'53.2404"W	1848.60	111.776	0.98	0.95	0.6
10655.98	23.560	107.920	10359.99	-1276.36	-697.34	1752.37	1715995.32	14414673.74	39°41'30.9959"N	80°43'52.7843"W	1886.02	111.700	0.10	0.10	0.0
10750.98	21.930	106.780	10447.60	-1299.10	-708.31	1787.42	1716030.35	14414662.78	39°41'30.8865"N	80°43'52.3363"W	1922.65	111.617	1.78	-1.72	-1.2
10843.98	19.820	104.930	10534.49	-1318.94	-717.38	1819.29	1716062.21	14414653.71	39°41'30.7958"N	80°43'51.9291"W	1955.62	111.520	2.38	-2.27	-1.9
10910.00	18.520	105.430	10596.85	-1331.70	-723.06	1840.21	1716083.12	14414648.04	39°41'30.7392"N	80°43'51.6616"W	1977.17	111.451	1.98	-1.97	0.7
10936.00	17.220	104.560	10621.59	-1336.38	-725.12	1847.91	1716090.82	14414645.97	39°41'30.7185"N	80°43'51.5631"W	1985.09	111.425	5.10	-5.00	-3.3
11030.00	17.590	104.150	10711.29	-1352.60	-732.09	1875.15	1716118.05	14414639.01	39°41'30.6488"N	80°43'51.2149"W	2013.00	111.327	0.41	0.39	-0.4
11124.00	17.330	87.860	10801.01	-1365.27	-735.05	1902.93	1716145.82	14414636.06	39°41'30.6188"N	80°43'50.8597"W	2039.96	111.120	5.19	-0.28	-17.3
11219.00	16.070	66.430	10892.09	-1369.20	-729.25	1929.15	1716172.03	14414641.84	39°41'30.6753"N	80°43'50.5241"W	2062.39	110.707	6.58	-1.33	-22.5
11314.00	16.190	45.780	10983.43	-1363.34	-714.75	1950.71	1716193.58	14414656.35	39°41'30.8180"N	80°43'50.2477"W	2077.53	110.123	6.01	0.13	-21.7
11407.00	18.760	27.470	11072.19	-1348.25	-692.42	1966.92	1716209.78	14414678.67	39°41'31.0382"N	80°43'50.0396"W	2085.23	109.394	6.49	2.76	-19.6



RECEIVED
Office Of Oil and Gas

OCT 02 2024

WV Department of
Environmental Protection

Actual Wellpath Report

Elmer N-17 HU AWP Proj:22783'

Page 7 of 13



REFERENCE WELLPATH IDENTIFICATION

Operator	EQT (TUG HILL OPERATING, LLC)	Well	Elmer N-17 HU
Field	Wetzel	API	47-103-03505-0000
Facility	Elmer Pad	Wellbore	Elmer N-17 HU AWB
Slot	Slot 17		

WELLPATH DATA (273 stations)

MD [ft]	Inclination [°]	Azimuth [°]	TVD [ft]	Vert Sect [ft]	North [ft]	East [ft]	Grid East [US ft]	Grid North [US ft]	Latitude	Longitude	Closure Dist [ft]	Closure Dir [°]	DLS [°/100ft]	Build Rate [°/100ft]	Turn Rate [°/100ft]
11501.00	20.840	12.640	11160.69	-1324.25	-662.67	1977.56	1716220.41	14414708.41	39°41'31.3319"N	80°43'49.9023"W	2085.63	108.526	5.77	2.21	-15.71
11594.00	25.750	3.520	11246.11	-1292.04	-626.33	1982.42	1716225.28	14414744.73	39°41'31.6909"N	80°43'49.8387"W	2079.01	107.533	6.54	5.28	-9.8
11687.00	30.790	356.650	11328.01	-1250.91	-582.36	1982.27	1716225.13	14414788.68	39°41'32.1254"N	80°43'49.8389"W	2066.05	106.372	6.44	5.42	-7.31
11780.00	32.300	354.840	11407.27	-1204.29	-533.85	1978.64	1716221.50	14414837.17	39°41'32.6050"N	80°43'49.8834"W	2049.40	105.099	1.92	1.62	-1.91
11873.00	37.540	345.670	11483.55	-1152.15	-481.58	1969.38	1716212.25	14414889.42	39°41'33.1218"N	80°43'49.9999"W	2027.41	103.741	7.96	5.63	-9.81
11965.00	43.990	339.720	11553.22	-1092.28	-424.37	1951.35	1716194.22	14414946.61	39°41'33.6877"N	80°43'50.2284"W	1996.96	102.269	8.18	7.01	-6.41
12058.00	50.970	336.520	11616.04	-1023.80	-360.86	1925.73	1716168.60	14415010.09	39°41'34.3162"N	80°43'50.5537"W	1959.25	100.613	7.92	7.51	-3.41
12151.00	57.570	337.370	11670.32	-948.40	-291.42	1896.20	1716139.09	14415079.50	39°41'35.0032"N	80°43'50.9288"W	1918.46	98.737	7.14	7.10	0.91
12245.00	65.350	337.820	11715.20	-865.92	-215.13	1864.76	1716107.66	14415155.76	39°41'35.7581"N	80°43'51.3281"W	1877.13	96.581	8.29	8.28	0.41
12338.00	75.270	340.140	11746.50	-778.47	-133.49	1833.45	1716076.36	14415237.38	39°41'36.5660"N	80°43'51.7255"W	1838.30	94.164	10.92	10.67	2.41
12432.00	81.270	333.540	11765.62	-686.61	-48.98	1797.23	1716040.16	14415321.85	39°41'37.4022"N	80°43'52.1855"W	1797.90	91.561	9.38	6.38	-7.01
12525.00	87.150	331.440	11775.00	-594.75	33.04	1754.51	1715997.45	14415403.84	39°41'38.2140"N	80°43'52.7290"W	1754.82	88.921	6.71	6.32	-2.21
12617.00	90.610	330.280	11776.80	-503.73	113.37	1709.72	1715952.69	14415484.13	39°41'39.0092"N	80°43'53.2988"W	1713.48	86.206	3.97	3.76	-1.21
12710.00	90.700	331.000	11775.73	-411.75	194.41	1664.13	1715907.11	14415565.15	39°41'39.8116"N	80°43'53.8789"W	1675.45	83.337	0.78	0.10	0.71
12802.00	90.700	330.880	11774.61	-320.69	274.83	1619.45	1715862.45	14415645.53	39°41'40.6076"N	80°43'54.4475"W	1642.60	80.368	0.13	0.00	-0.11
12895.00	90.950	331.130	11773.27	-228.63	356.16	1574.37	1715817.39	14415726.83	39°41'41.4127"N	80°43'55.0210"W	1614.16	77.253	0.38	0.27	0.21
12988.00	90.860	330.840	11771.80	-136.58	437.48	1529.27	1715772.30	14415808.12	39°41'42.2177"N	80°43'55.5949"W	1590.61	74.036	0.33	-0.10	-0.31
13081.00	90.980	331.070	11770.31	-44.53	518.77	1484.12	1715727.18	14415889.38	39°41'43.0224"N	80°43'56.1693"W	1572.18	70.733	0.28	0.13	0.21
13174.00	90.950	330.320	11768.74	47.46	599.86	1438.61	1715681.68	14415970.43	39°41'43.8251"N	80°43'56.7485"W	1558.66	67.365	0.81	-0.03	-0.81
13267.00	90.950	329.680	11767.20	139.27	680.39	1392.12	1715635.21	14416050.93	39°41'44.6224"N	80°43'57.3402"W	1549.49	63.953	0.69	0.00	-0.61
13361.00	90.980	330.220	11765.62	232.06	761.74	1345.05	1715588.16	14416132.25	39°41'45.4278"N	80°43'57.9392"W	1545.77	60.476	0.58	0.03	0.51
13454.00	90.950	330.270	11764.05	323.93	842.47	1298.90	1715542.03	14416212.95	39°41'46.2269"N	80°43'58.5265"W	1548.19	57.033	0.06	-0.03	0.01
13546.00	90.950	330.050	11762.53	414.80	922.26	1253.13	1715496.28	14416292.71	39°41'47.0168"N	80°43'59.1090"W	1555.93	53.648	0.24	0.00	-0.21
13639.00	91.010	330.120	11760.94	506.64	1002.86	1206.76	1715449.92	14416373.27	39°41'47.8147"N	80°43'59.6992"W	1569.07	50.272	0.10	0.06	0.01
13732.00	90.950	330.080	11759.34	598.48	1083.47	1160.41	1715403.59	14416453.85	39°41'48.6127"N	80°44'0.2891"W	1587.59	46.964	0.08	-0.06	-0.01
13825.00	90.950	330.180	11757.80	690.32	1164.10	1114.10	1715357.30	14416534.45	39°41'49.4110"N	80°44'0.8785"W	1611.32	43.743	0.11	0.00	0.11
13918.00	90.920	330.260	11756.28	782.19	1244.81	1067.91	1715311.13	14416615.13	39°41'50.2100"N	80°44'1.4663"W	1640.12	40.626	0.09	-0.03	0.01
14011.00	90.920	329.930	11754.79	874.03	1325.42	1021.55	1715264.79	14416695.70	39°41'51.0079"N	80°44'2.0564"W	1673.41	37.623	0.35	0.00	-0.31
14103.00	90.890	329.970	11753.34	964.85	1405.04	975.49	1715218.74	14416775.29	39°41'51.7962"N	80°44'2.6427"W	1710.47	34.771	0.05	-0.03	0.01
14196.00	90.950	330.010	11751.85	1056.66	1485.56	928.98	1715172.25	14416855.78	39°41'52.5933"N	80°44'3.2346"W	1752.11	32.019	0.08	0.06	0.01



RECEIVED
Office Of Oil and Gas

OCT 02 2024

WV Department of
Environmental Protection

Actual Wellpath Report

Elmer N-17 HU AWP Proj:22783'

Page 8 of 13



REFERENCE WELLPATH IDENTIFICATION

Operator	EQT (TUG HILL OPERATING, LLC)	Well	Elmer N-17 HU
Field	Wetzel	API	47-103-03505-0000
Facility	Elmer Pad	Wellbore	Elmer N-17 HU AWB
Slot	Slot 17		

WELLPATH DATA (273 stations)

MD [ft]	Inclination [°]	Azimuth [°]	TVD [ft]	Vert Sect [ft]	North [ft]	East [ft]	Grid East [US ft]	Grid North [US ft]	Latitude	Longitude	Closure Dist [ft]	Closure Dir [°]	DLS [°/100ft]	Build Rate [°/100ft]	Turn Rate [°/100ft]
14289.00	90.960	330.650	11750.30	1148.56	1566.36	882.95	1715126.24	14416936.55	39°41'53.3932"N	80°44'3.8204"W	1798.08	29.410	0.69	0.01	0.61
14381.00	90.870	330.790	11748.83	1239.56	1646.59	837.96	1715081.27	14417016.75	39°41'54.1874"N	80°44'4.3929"W	1847.55	26.972	0.18	-0.10	0.11
14475.00	90.930	330.700	11747.35	1332.55	1728.59	792.03	1715035.36	14417098.72	39°41'54.9992"N	80°44'4.9775"W	1901.41	24.617	0.12	0.06	-0.11
14568.00	90.900	330.340	11745.86	1424.49	1809.54	746.27	1714989.61	14417179.64	39°41'55.8005"N	80°44'5.5598"W	1957.39	22.412	0.39	-0.03	-0.31
14662.00	91.020	329.770	11744.29	1517.31	1890.98	699.35	1714942.72	14417261.04	39°41'56.6067"N	80°44'6.1570"W	2016.16	20.296	0.62	0.13	-0.61
14756.00	90.960	329.720	11742.67	1610.04	1972.17	652.00	1714895.38	14417342.20	39°41'57.4104"N	80°44'6.7597"W	2077.15	18.294	0.08	-0.06	-0.01
14848.00	91.050	329.710	11741.05	1700.80	2051.60	605.61	1714849.01	14417421.60	39°41'58.1968"N	80°44'7.3502"W	2139.12	16.446	0.10	0.10	-0.01
14942.00	90.960	329.970	11739.40	1793.55	2132.86	558.39	1714801.81	14417502.83	39°41'59.0013"N	80°44'7.9513"W	2204.74	14.671	0.29	-0.10	0.21
15034.00	90.870	329.370	11737.93	1884.30	2212.26	511.94	1714755.38	14417582.19	39°41'59.7873"N	80°44'8.5426"W	2270.72	13.029	0.66	-0.10	-0.61
15127.00	90.990	329.560	11736.42	1975.97	2292.35	464.69	1714708.15	14417662.25	39°42'0.5802"N	80°44'9.1440"W	2338.98	11.459	0.24	0.13	0.21
15220.00	91.020	329.480	11734.79	2067.65	2372.49	417.53	1714661.00	14417742.36	39°42'1.3735"N	80°44'9.7444"W	2408.95	9.981	0.09	0.03	-0.01
15313.00	90.930	329.010	11733.21	2159.27	2452.40	369.98	1714613.47	14417822.23	39°42'2.1647"N	80°44'10.3497"W	2480.15	8.579	0.51	-0.10	-0.51
15406.00	90.930	329.390	11731.70	2250.87	2532.27	322.37	1714565.88	14417902.08	39°42'2.9554"N	80°44'10.9559"W	2552.70	7.255	0.41	0.00	0.41
15499.00	90.900	328.850	11730.22	2342.44	2612.07	274.64	1714518.17	14417981.85	39°42'3.7455"N	80°44'11.5635"W	2626.47	6.002	0.58	-0.03	-0.51
15592.00	90.960	329.920	11728.71	2434.09	2692.10	227.29	1714470.84	14418061.84	39°42'4.5377"N	80°44'12.1663"W	2701.68	4.826	1.15	0.06	1.11
15685.00	91.020	329.590	11727.10	2525.84	2772.43	180.45	1714424.02	14418142.14	39°42'5.3330"N	80°44'12.7626"W	2778.29	3.724	0.36	0.06	-0.31
15778.00	90.960	329.550	11725.49	2617.54	2852.60	133.35	1714376.94	14418222.29	39°42'6.1267"N	80°44'13.3621"W	2855.72	2.676	0.08	-0.06	-0.01
15871.00	90.960	329.810	11723.93	2709.27	2932.87	86.41	1714330.02	14418302.52	39°42'6.9213"N	80°44'13.9597"W	2934.15	1.688	0.28	0.00	0.21
15963.00	90.990	329.760	11722.37	2800.05	3012.36	40.12	1714283.74	14418381.98	39°42'7.7083"N	80°44'14.5490"W	3012.63	0.763	0.06	0.03	-0.01
16056.00	90.960	329.620	11720.79	2891.78	3092.64	-6.81	1714236.83	14418462.22	39°42'8.5030"N	80°44'15.1464"W	3092.65	359.874	0.15	-0.03	-0.11
16149.00	90.960	329.840	11719.23	2983.52	3172.95	-53.68	1714189.98	14418542.50	39°42'9.2980"N	80°44'15.7431"W	3173.40	359.031	0.24	0.00	0.21
16242.00	91.020	329.870	11717.62	3075.30	3253.36	-100.38	1714143.30	14418622.88	39°42'10.0940"N	80°44'16.3375"W	3254.91	358.233	0.07	0.06	0.01
16335.00	91.240	329.760	11715.79	3167.06	3333.73	-147.13	1714096.57	14418703.22	39°42'10.8897"N	80°44'16.9326"W	3336.98	357.473	0.26	0.24	-0.11
16428.00	91.170	329.750	11713.83	3258.80	3414.06	-193.96	1714049.75	14418783.51	39°42'11.6849"N	80°44'17.5288"W	3419.56	356.748	0.08	-0.08	-0.01
16522.00	91.210	329.920	11711.88	3351.55	3495.31	-241.19	1714002.55	14418864.73	39°42'12.4892"N	80°44'18.1300"W	3503.62	356.053	0.19	0.04	0.11
16614.00	91.200	329.800	11709.95	3442.34	3574.85	-287.37	1713956.38	14418944.25	39°42'13.2767"N	80°44'18.7179"W	3586.38	355.404	0.13	-0.01	-0.11
16707.00	91.210	329.730	11707.99	3534.08	3655.18	-334.19	1713909.58	14419024.55	39°42'14.0719"N	80°44'19.3140"W	3670.43	354.776	0.08	0.01	-0.01
16800.00	91.170	329.720	11706.06	3625.82	3735.48	-381.07	1713862.72	14419104.81	39°42'14.8669"N	80°44'19.9107"W	3754.87	354.175	0.04	-0.04	-0.01
16893.00	91.200	329.890	11704.13	3717.57	3815.85	-427.83	1713815.98	14419185.15	39°42'15.6624"N	80°44'20.5061"W	3839.76	353.603	0.19	0.03	0.11
16986.00	91.170	330.080	11702.21	3809.38	3896.36	-474.34	1713769.48	14419265.63	39°42'16.4594"N	80°44'21.0982"W	3925.12	353.059	0.21	-0.03	0.21



RECEIVED
Office Of Oil and Gas
OCT 02 2024
WV Department of
Environmental Protection

Actual Wellpath Report

Elmer N-17 HU AWP Proj:22783'
Page 9 of 13



REFERENCE WELLPATH IDENTIFICATION

Operator	EQT (TUG HILL OPERATING, LLC)	Well	Elmer N-17 HU
Field	Wetzel	API	47-103-03505-0000
Facility	Elmer Pad	Wellbore	Elmer N-17 HU AWB
Slot	Slot 17		

WELLPATH DATA (273 stations)

MD [ft]	Inclination [°]	Azimuth [°]	TVD [ft]	Vert Sect [ft]	North [ft]	East [ft]	Grid East [US ft]	Grid North [US ft]	Latitude	Longitude	Closure Dist [ft]	Closure Dir [°]	DLS [°/100ft]	Build Rate [°/100ft]	Turn Rate [°/100ft]
17079.00	91.200	329.880	11700.29	3901.18	3976.86	-520.86	1713722.99	14419346.10	39°42'17.2564"N	80°44'21.6904"W	4010.83	352.538	0.22	0.03	-0.2
17172.00	91.140	329.980	11698.39	3992.97	4057.33	-567.45	1713676.42	14419426.54	39°42'18.0530"N	80°44'22.2835"W	4096.82	352.038	0.13	-0.06	0.1
17265.00	91.270	330.520	11696.43	4084.84	4138.06	-613.59	1713630.30	14419507.23	39°42'18.8521"N	80°44'22.8708"W	4183.30	351.566	0.60	0.14	0.5
17358.00	90.620	330.290	11694.90	4176.75	4218.91	-659.51	1713584.39	14419588.05	39°42'19.6525"N	80°44'23.4553"W	4270.15	351.115	0.74	-0.70	-0.2
17451.00	90.620	330.130	11693.89	4268.63	4299.62	-705.71	1713538.21	14419668.72	39°42'20.4514"N	80°44'24.0435"W	4357.15	350.679	0.17	0.00	-0.1
17544.00	90.590	330.140	11692.91	4360.48	4380.26	-752.02	1713491.92	14419749.34	39°42'21.2497"N	80°44'24.6330"W	4444.35	350.258	0.03	-0.03	0.0
17637.00	90.590	330.070	11691.95	4452.33	4460.88	-798.37	1713445.59	14419829.93	39°42'22.0478"N	80°44'25.2231"W	4531.76	349.853	0.08	0.00	-0.0
17731.00	90.740	329.950	11690.86	4545.14	4542.29	-845.35	1713398.62	14419911.30	39°42'22.8537"N	80°44'25.8212"W	4620.29	349.457	0.20	0.16	-0.1
17825.00	90.830	329.700	11689.57	4637.90	4623.55	-892.60	1713351.40	14419992.53	39°42'23.6581"N	80°44'26.4227"W	4708.92	349.073	0.28	0.10	-0.2
17918.00	90.900	329.880	11688.17	4729.67	4703.91	-939.39	1713304.63	14420072.86	39°42'24.4536"N	80°44'27.0184"W	4796.79	348.706	0.21	0.08	0.1
18011.00	90.840	330.000	11686.76	4821.47	4784.39	-985.96	1713258.07	14420153.31	39°42'25.2503"N	80°44'27.6114"W	4884.93	348.356	0.14	-0.06	0.1
18104.00	90.870	330.030	11685.37	4913.29	4864.93	-1032.44	1713211.61	14420233.82	39°42'26.0476"N	80°44'28.2030"W	4973.28	348.018	0.05	0.03	0.0
18197.00	90.800	329.760	11684.02	5005.08	4945.38	-1079.08	1713164.99	14420314.23	39°42'26.8440"N	80°44'28.7969"W	5061.74	347.691	0.30	-0.08	-0.2
18290.00	90.830	329.790	11682.69	5096.84	5025.73	-1125.89	1713118.19	14420394.55	39°42'27.6394"N	80°44'29.3928"W	5150.30	347.373	0.05	0.03	0.0
18383.00	90.870	329.900	11681.31	5188.61	5106.13	-1172.60	1713071.50	14420474.92	39°42'28.4354"N	80°44'29.9876"W	5239.05	347.066	0.13	0.04	0.1
18477.00	90.870	329.840	11679.89	5281.38	5187.42	-1219.78	1713024.34	14420556.18	39°42'29.2401"N	80°44'30.5883"W	5328.91	346.768	0.06	0.00	-0.0
18570.00	90.830	330.140	11678.51	5373.20	5267.95	-1266.29	1712977.85	14420636.67	39°42'30.0372"N	80°44'31.1804"W	5418.00	346.484	0.33	-0.04	0.3
18663.00	90.870	330.060	11677.13	5465.04	5348.56	-1312.65	1712931.51	14420717.25	39°42'30.8352"N	80°44'31.7705"W	5507.28	346.211	0.10	0.04	-0.0
18756.00	90.870	329.870	11675.71	5556.85	5429.06	-1359.19	1712884.99	14420797.72	39°42'31.6321"N	80°44'32.3631"W	5596.62	345.945	0.20	0.00	-0.2
18849.00	90.830	329.970	11674.33	5648.64	5509.53	-1405.80	1712838.40	14420878.16	39°42'32.4287"N	80°44'32.9565"W	5686.05	345.686	0.12	-0.04	0.1
18942.00	90.930	329.940	11672.91	5740.45	5590.02	-1452.36	1712791.86	14420958.62	39°42'33.2255"N	80°44'33.5493"W	5775.61	345.436	0.11	0.11	-0.0
19035.00	90.870	329.810	11671.45	5832.23	5670.45	-1499.03	1712745.21	14421039.02	39°42'34.0217"N	80°44'34.1435"W	5865.25	345.192	0.15	-0.06	-0.1
19128.00	90.770	330.070	11670.11	5924.03	5750.94	-1545.60	1712698.65	14421119.47	39°42'34.8184"N	80°44'34.7366"W	5955.01	344.957	0.30	-0.11	0.2
19221.00	90.830	329.860	11668.82	6015.84	5831.44	-1592.15	1712652.12	14421199.94	39°42'35.6153"N	80°44'35.3292"W	6044.88	344.729	0.23	0.06	-0.2
19314.00	90.740	329.890	11667.54	6107.63	5911.87	-1638.82	1712605.47	14421280.34	39°42'36.4115"N	80°44'35.9234"W	6134.81	344.506	0.10	-0.10	0.0
19407.00	90.860	329.810	11666.24	6199.41	5992.28	-1685.53	1712558.78	14421360.72	39°42'37.2075"N	80°44'36.5181"W	6224.82	344.290	0.16	0.13	-0.0
19500.00	90.830	329.740	11664.87	6291.16	6072.63	-1732.34	1712511.99	14421441.04	39°42'38.0029"N	80°44'37.1141"W	6314.89	344.078	0.08	-0.03	-0.0
19593.00	90.770	329.870	11663.57	6382.93	6153.00	-1779.11	1712465.24	14421521.38	39°42'38.7985"N	80°44'37.7097"W	6405.05	343.873	0.15	-0.06	0.1
19687.00	90.800	329.990	11662.29	6475.72	6234.34	-1826.20	1712418.16	14421602.69	39°42'39.6037"N	80°44'38.3093"W	6496.31	343.673	0.13	0.03	0.1
19779.00	90.860	329.560	11660.95	6566.49	6313.83	-1872.51	1712371.87	14421682.14	39°42'40.3906"N	80°44'38.8989"W	6585.65	343.481	0.47	0.07	-0.4



RECEIVED
Office Of Oil and Gas

OCT 02 2024

WV Department of

Actual Wellpath Report

Elmer N-17 HU AWP Proj:22783'

Page 10 of 13



REFERENCE WELLPATH IDENTIFICATION

Operator	EQT (TUG HILL OPERATING, LLC)	Well	Elmer N-17 HU
Field	Wetzel	API	47-103-03505-0000
Facility	Elmer Pad	Wellbore	Elmer N-17 HU AWB
Slot	Slot 17		

WELLPATH DATA (273 stations)

MD [ft]	Inclination [°]	Azimuth [°]	TVD [ft]	Vert Sect [ft]	North [ft]	East [ft]	Grid East [US ft]	Grid North [US ft]	Latitude	Longitude	Closure Dist [ft]	Closure Dir [°]	DLS [°/100ft]	Build Rate [°/100ft]	Turn Rate [°/100ft]
19872.00	90.860	329.580	11659.56	6658.19	6394.01	-1919.61	1712324.79	14421762.29	39°42'41.1843"N	80°44'39.4987"W	6675.95	343.289	0.02	0.00	0.00
19966.00	90.900	330.430	11658.11	6751.00	6475.41	-1966.59	1712277.82	14421843.66	39°42'41.9901"N	80°44'40.0969"W	6767.45	343.106	0.91	0.04	0.90
20059.00	90.710	329.970	11656.81	6842.87	6556.10	-2012.81	1712231.63	14421924.32	39°42'42.7889"N	80°44'40.6853"W	6858.13	342.933	0.54	-0.20	-0.40
20152.00	90.830	329.820	11655.56	6934.66	6636.55	-2059.45	1712185.00	14422004.73	39°42'43.5852"N	80°44'41.2793"W	6948.75	342.760	0.21	0.13	-0.10
20246.00	90.860	329.590	11654.17	7027.38	6717.71	-2106.86	1712137.61	14422085.86	39°42'44.3886"N	80°44'41.8830"W	7040.34	342.587	0.25	0.03	-0.20
20338.00	91.170	329.640	11652.54	7118.11	6797.06	-2153.39	1712091.10	14422165.18	39°42'45.1741"N	80°44'42.4755"W	7130.01	342.421	0.34	0.34	0.00
20431.00	91.110	329.940	11650.69	7209.86	6877.41	-2200.18	1712044.33	14422245.50	39°42'45.9695"N	80°44'43.0712"W	7220.77	342.260	0.33	-0.06	0.30
20524.00	91.170	329.830	11648.84	7301.64	6957.84	-2246.83	1711997.70	14422325.90	39°42'46.7657"N	80°44'43.6653"W	7311.62	342.104	0.13	0.06	-0.10
20617.00	91.200	329.960	11646.92	7393.42	7038.28	-2293.47	1711951.08	14422406.30	39°42'47.5620"N	80°44'44.2592"W	7402.52	341.951	0.14	0.03	0.10
20710.00	91.170	329.850	11644.99	7485.20	7118.72	-2340.09	1711904.48	14422486.72	39°42'48.3583"N	80°44'44.8528"W	7493.48	341.803	0.12	-0.03	-0.10
20804.00	91.260	329.840	11643.00	7577.96	7199.98	-2387.30	1711857.28	14422567.95	39°42'49.1627"N	80°44'45.4540"W	7585.45	341.656	0.10	0.10	-0.00
20897.00	91.230	329.700	11640.98	7669.70	7280.32	-2434.11	1711810.49	14422648.25	39°42'49.9580"N	80°44'46.0501"W	7676.45	341.513	0.15	-0.03	-0.10
20990.00	91.290	329.790	11638.94	7761.44	7360.63	-2480.96	1711763.66	14422728.53	39°42'50.7530"N	80°44'46.6467"W	7767.50	341.373	0.12	0.06	0.10
21083.00	91.260	329.730	11636.87	7853.18	7440.96	-2527.78	1711716.86	14422808.82	39°42'51.5481"N	80°44'47.2430"W	7858.60	341.237	0.07	-0.03	-0.00
21177.00	91.260	329.810	11634.80	7945.91	7522.15	-2575.10	1711669.56	14422889.99	39°42'52.3519"N	80°44'47.8455"W	7950.72	341.102	0.09	0.00	0.00
21270.00	91.450	330.160	11632.60	8037.71	7602.66	-2621.61	1711623.07	14422970.46	39°42'53.1488"N	80°44'48.4377"W	8041.97	340.974	0.43	0.20	0.30
21363.00	91.230	329.750	11630.42	8129.50	7683.14	-2668.16	1711576.54	14423050.91	39°42'53.9455"N	80°44'49.0305"W	8133.25	340.849	0.50	-0.24	-0.40
21457.00	91.020	329.950	11628.58	8222.26	7764.41	-2715.36	1711529.35	14423132.15	39°42'54.7500"N	80°44'49.6316"W	8225.52	340.724	0.31	-0.22	0.20
21549.00	90.990	329.790	11626.97	8313.05	7843.97	-2761.53	1711483.20	14423211.67	39°42'55.5375"N	80°44'50.2196"W	8315.88	340.605	0.18	-0.03	-0.10
21641.00	90.960	329.870	11625.40	8403.83	7923.49	-2807.76	1711436.99	14423291.17	39°42'56.3247"N	80°44'50.8083"W	8406.26	340.488	0.09	-0.03	0.00
21735.00	91.080	329.620	11623.73	8496.57	8004.68	-2855.12	1711389.65	14423372.32	39°42'57.1284"N	80°44'51.4114"W	8498.62	340.370	0.29	0.13	-0.20
21827.00	90.740	329.440	11622.27	8587.27	8083.96	-2901.76	1711343.02	14423451.57	39°42'57.9132"N	80°44'52.0054"W	8588.98	340.254	0.42	-0.37	-0.20
21921.00	90.710	329.730	11621.08	8679.97	8165.02	-2949.35	1711295.46	14423532.60	39°42'58.7156"N	80°44'52.6114"W	8681.37	340.139	0.31	-0.03	0.30
22013.00	90.800	329.940	11619.86	8770.76	8244.55	-2995.57	1711249.25	14423612.10	39°42'59.5029"N	80°44'53.2001"W	8771.89	340.032	0.25	0.10	0.20
22107.00	90.710	329.960	11618.63	8863.55	8325.91	-3042.64	1711202.20	14423693.42	39°43'0.3083"N	80°44'53.7995"W	8864.45	339.926	0.10	-0.10	0.00
22200.00	90.620	327.960	11617.55	8955.08	8405.58	-3090.59	1711154.27	14423773.07	39°43'1.0970"N	80°44'54.4102"W	8955.76	339.812	2.15	-0.10	-2.10
22293.00	90.770	327.650	11616.42	9046.27	8484.28	-3140.14	1711104.75	14423851.73	39°43'1.8761"N	80°44'55.0414"W	9046.74	339.690	0.37	0.16	-0.30
22386.00	90.830	327.670	11615.12	9137.41	8562.85	-3189.88	1711055.02	14423930.27	39°43'2.6539"N	80°44'55.6752"W	9137.71	339.568	0.07	0.06	0.00
22479.00	90.770	327.670	11613.82	9228.56	8641.42	-3239.61	1711005.31	14424008.81	39°43'3.4318"N	80°44'56.3088"W	9228.72	339.449	0.06	-0.06	0.00
22573.00	90.950	327.630	11612.41	9320.67	8720.82	-3289.91	1710955.04	14424088.18	39°43'4.2179"N	80°44'56.9496"W	9320.74	339.331	0.20	0.19	-0.00



RECEIVED
Office Of Oil and Gas

OCT 02 2024

WV Department of
Environmental Protection

Actual Wellpath Report

Elmer N-17 HU AWP Proj:22783'

Page 11 of 13



REFERENCE WELLPATH IDENTIFICATION

Operator	EQT (TUG HILL OPERATING, LLC)	Well	Elmer N-17 HU
Field	Wetzel	API	47-103-03505-0000
Facility	Elmer Pad	Wellbore	Elmer N-17 HU AWB
Slot	Slot 17		

WELLPATH DATA (273 stations) † = interpolated, ‡ = extrapolated station

MD [ft]	Inclination [°]	Azimuth [°]	TVD [ft]	Vert Sect [ft]	North [ft]	East [ft]	Grid East [US ft]	Grid North [US ft]	Latitude	Longitude	Closure Dist [ft]	Closure Dir [°]	DLS [°/100ft]	Build Rate [°/100ft]	Turn Rate [°/100ft]
22666.00	90.680	327.700	11611.09	9411.81	8799.39	-3339.64	1710905.32	14424166.72	39°43'4.9958"N	80°44'57.5832"W	9411.83	339.217	0.30	-0.29	0.00
22758.00	90.710	327.490	11609.97	9501.96	8877.06	-3388.94	1710856.04	14424244.36	39°43'5.7647"N	80°44'58.2114"W	9501.96	339.105	0.23	0.03	-0.20
22783.00‡	90.710	327.490	11609.66	9526.44	8898.14	-3402.38	1710842.61	14424265.43	39°43'5.9734"N	80°44'58.3825"W	9526.44	339.075	0.00	0.00	0.00

HOLE & CASING SECTIONS - Ref Wellbore: Elmer N-17 HU AWB Ref Wellpath: Elmer N-17 HU AWP Proj:22783'

String/Diameter	Start MD [ft]	End MD [ft]	Interval [ft]	Start TVD [ft]	End TVD [ft]	Start N/S [ft]	Start E/W [ft]	End N/S [ft]	End E/W [ft]
30in Conductor	33.00	153.00	120.00	33.00	153.00	0.00	0.00	-0.08	-0.00
26in Open Hole	153.00	1105.00	952.00	153.00	1104.96	-0.08	-0.01	5.52	1.90
20in Casing Surface	33.00	1105.00	1072.00	33.00	1104.96	0.00	0.00	5.52	1.90
17.5in Open Hole	1105.00	2960.00	1855.00	1104.96	2959.64	5.52	1.91	0.53	0.26
13.375in Casing Intermediate	33.00	2960.00	2927.00	33.00	2959.64	0.00	0.00	0.53	0.26
12.25in Open Hole	2960.00	10873.00	7913.00	2959.64	10561.84	0.53	0.26	-719.90	1828.66
9.625in Casing Intermediate	33.00	10873.00	10840.00	33.00	10561.84	0.00	0.00	-719.90	1828.66
8.5in Open Hole	10873.00	22783.00	11910.00	10561.84	11609.66	-719.90	1828.66	8898.14	-3402.38
5.5in Casing Production	33.00	22783.00	22750.00	33.00	11609.66	0.00	0.00	8898.14	-3402.38



RECEIVED
Office Of Oil and Gas
OCT 02 2024
WV Department of
Environmental Protection

Actual Wellpath Report

Elmer N-17 HU AWP Proj:22783'
Page 12 of 13



REFERENCE WELLPATH IDENTIFICATION

Operator	EQT (TUG HILL OPERATING, LLC)	Well	Elmer N-17 HU
Field	Wetzel	API	47-103-03505-0000
Facility	Elmer Pad	Wellbore	Elmer N-17 HU AWB
Slot	Slot 17		

TARGETS

Name	TVD [ft]	North [ft]	East [ft]	Grid East [US ft]	Grid North [US ft]	Latitude	Longitude	Shape
Elmer 17 HU BHL Rev-1	11586.94	8900.60	-3396.76	1710848.22	14424267.88	39°43'5.9975"N	80°44'58.3106"W	point
Elmer 17 HU LP Rev-1	11765.00	65.22	1744.19	1715987.14	14415436.01	39°41'38.5324"N	80°43'52.8597"W	point

WELLPATH COMPOSITION - Ref Wellbore: Elmer N-17 HU AWB Ref Wellpath: Elmer N-17 HU AWP Proj:22783'

Start MD [ft]	End MD [ft]	Positional Uncertainty Model	Log Name/Comment	Wellbore	Survey Date
33.00	838.00	OWSG MWD rev2 - Standard	01_MWD [OWSG MWD Rev.2+Standard] <26"> (21' - 838')	Elmer N-17 HU AWB	8/23/20
838.00	2602.99	OWSG MWD rev2 - Standard	02_MWD [OWSG MWD Rev.2+Standard] <17-1/2">838') (883' - 2602.99')	Elmer N-17 HU AWB	8/23/20
2602.99	10843.98	OWSG MWD rev2 - Standard	03_MWD [OWSG MWD Rev.2+Standard] (2602.99') <12-1/4">(3133.99' - 10843.98')	Elmer N-17 HU AWB	8/23/20
10843.98	22783.00	OWSG MWD rev2 + IFR1 + Sag + Multi-Station Correction	04_BH Lucida+SQC IFR1+SAG+FDIR <8-1/2">(10843.98')(10910'-22758')	Elmer N-17 HU AWB	9/22/20



RECEIVED
Office Of Oil and Gas

OCT 02 2024

WV Department of
Environmental Protection

Actual Wellpath Report

Elmer N-17 HU AWP Proj:22783'

Page 13 of 13



REFERENCE WELLPATH IDENTIFICATION

Operator	EQT (TUG HILL OPERATING, LLC)	Well	Elmer N-17 HU
Field	Wetzel	API	47-103-03505-0000
Facility	Elmer Pad	Wellbore	Elmer N-17 HU AWB
Slot	Slot 17		

COMMENTS

Wellpath general comments

API: 47-103-03505-0000
 BH Job #: 111941716
 Rig: Nabors X08
 Duration: 10/05/2023-10/09/2023

- 01_MWD [OWSG MWD Rev.2+Standard]<26"> (178' - 838')
- 02_MWD [OWSG MWD Rev.2+Standard] <17-1/2">(838') (883' - 2602.99')
- 03_MWD [OWSG MWD Rev.2+Standard] (2602.99') <12-1/4">(3133.99' - 10843.98')
- 04_BH Lucida+SQC IFR1+SAG+FDIR <8-1/2">(10843.98')(10910'-22758')

Landing Pt. @ 12617' MD
 Final Survey @ 22758' MD
 Projected MD at TD: 22783'