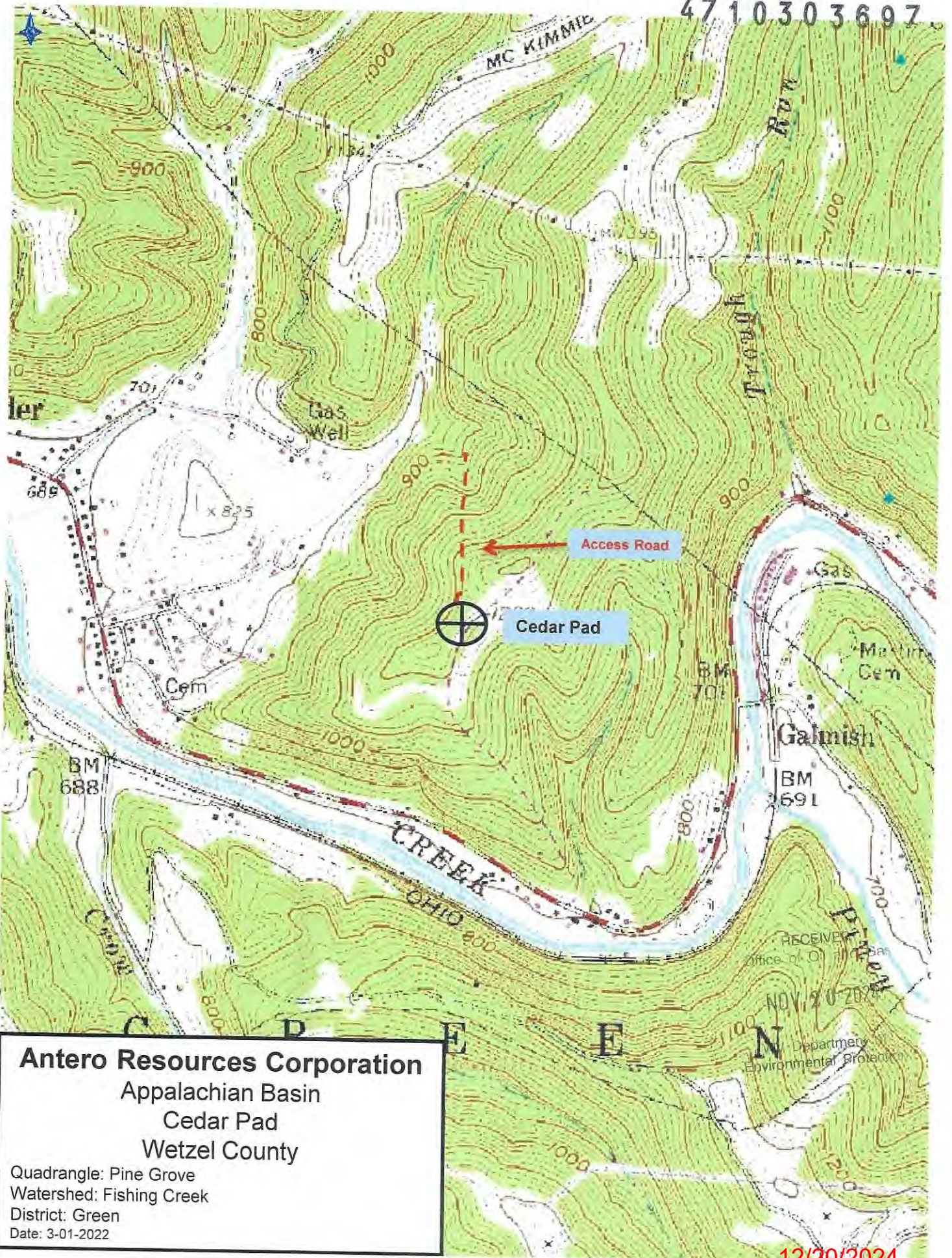


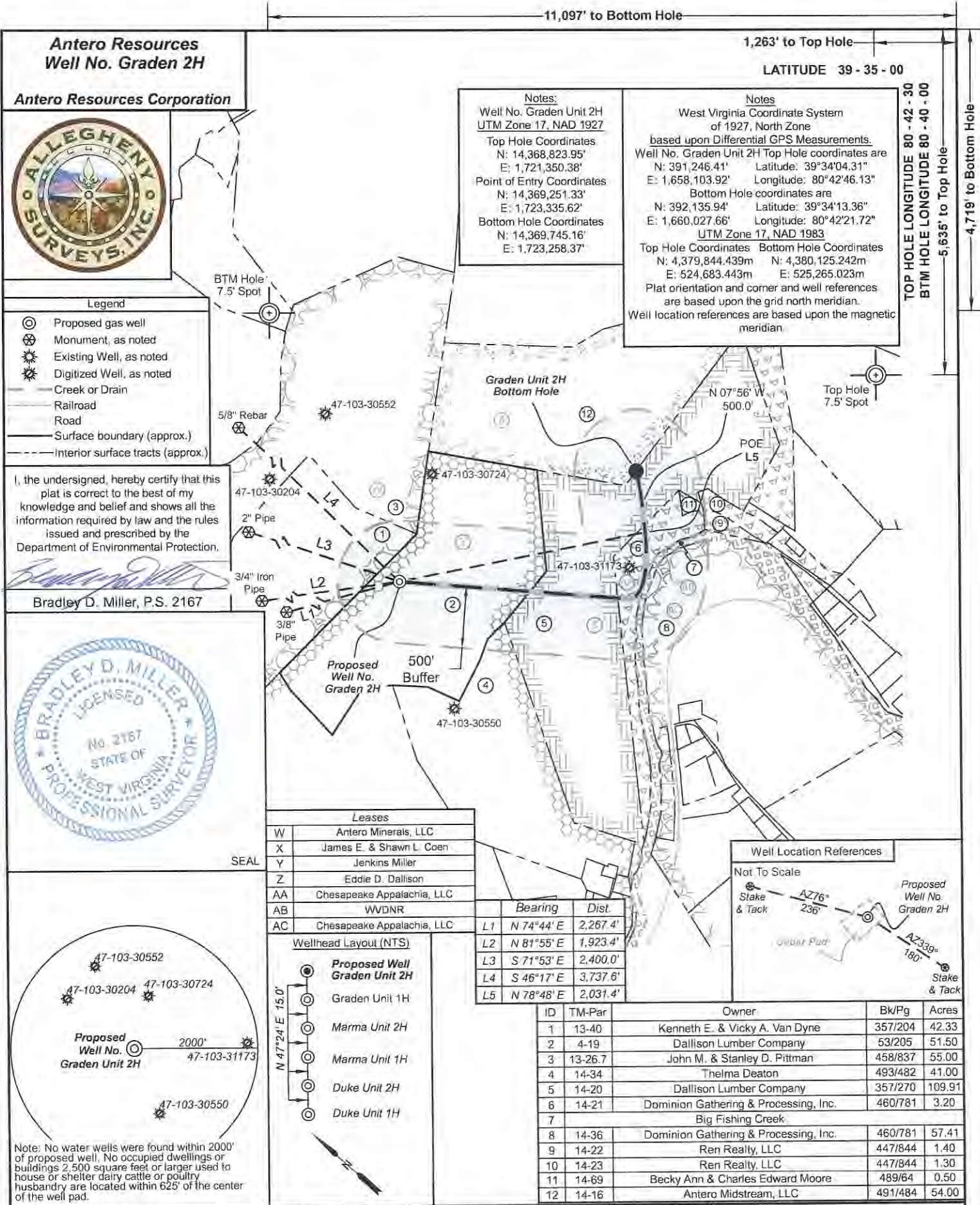
4710303697



**Antero Resources Corporation**  
 Appalachian Basin  
 Cedar Pad  
 Wetzel County

Quadrangle: Pine Grove  
 Watershed: Fishing Creek  
 District: Green  
 Date: 3-01-2022

12/20/2024



FILE NO: 46-34-G-22  
 DRAWING NO: Graden Unit 2H Short Well Plat  
 SCALE: 1" = 1000'  
 MINIMUM DEGREE OF ACCURACY: Submeter  
 PROVEN SOURCE OF ELEVATION: WVDOT, Harrisville, WV

**STATE OF WEST VIRGINIA**  
 DEPARTMENT OF ENVIRONMENTAL PROTECTION  
**OIL AND GAS DIVISION**

DATE: November 5 2024  
 OPERATOR'S WELL NO: Graden Unit 2H  
 API WELL NO: 47 - 103 - 03697  
 STATE COUNTY PERMIT

WELL TYPE:  OIL  GAS  LIQUID INJECTION  WASTE DISPOSAL  
 (IF GAS) PRODUCTION:  STORAGE  DEEP  SHALLOW

LOCATION: ELEVATION: As-Built 1,248' WATERSHED: Fishing Creek QUADRANGLE: Pine Grove  
 DISTRICT: Green COUNTY: Wetzel  
 SURFACE OWNER: Dallison Lumber Company ACREAGE: 51.50  
 ROYALTY OWNER: Jenkins Miller LEASE NO: ACREAGE: 200

PROPOSED WORK:  DRILL  CONVERT  DRILL DEEPER  FRACTURE OR STIMULATE  PLUG OFF OLD FORMATION  
 PERFORATE NEW FORMATION  OTHER PHYSICAL CHANGE IN WELL (SPECIFY) 7,600' TVD  
 PLUG AND ABANDON  CLEAN OUT AND REPLUG TARGET FORMATION: Marcellus Shale ESTIMATED DEPTH: 11,300' MD

WELL OPERATOR: Antero Resources Corporation DESIGNATED AGENT: Kevin Ellis  
 ADDRESS: 1615 Wynkoop Street ADDRESS: 535 White Oaks Blvd.  
 Denver, CO 80202 Bridgeport, WV 26330

11,097' to Bottom Hole

1,263' to Top Hole

LATITUDE 39 - 35 - 00

TOP HOLE LONGITUDE 80 - 42 - 30  
BTM HOLE LONGITUDE 80 - 40 - 00  
5,635' to Top Hole  
4,719' to Bottom Hole

### Antero Resources Well No. Graden 2H

Antero Resources Corporation



#### Legend

- ⊙ Proposed gas well
- ⊗ Monument, as noted
- ⊛ Existing Well, as noted
- ⊙ Digitized Well, as noted
- Creek or Drain
- Railroad
- Road
- Surface boundary (approx.)
- - - Interior surface tracts (approx.)

I, the undersigned, hereby certify that this plat is correct to the best of my knowledge and belief and shows all the information required by law and the rules issued and prescribed by the Department of Environmental Protection.

Bradley D. Miller, P.S. 2167



SEAL

**Notes:**  
Well No. Graden Unit 2H  
UTM Zone 17, NAD 1927

Top Hole Coordinates  
N: 14,368,823.95'  
E: 1,721,350.38'

Point of Entry Coordinates  
N: 14,369,251.33'  
E: 1,723,335.62'

Bottom Hole Coordinates  
N: 14,369,745.16'  
E: 1,723,258.37'

**Notes:**  
West Virginia Coordinate System  
of 1927, North Zone  
based upon Differential GPS Measurements.

Well No. Graden Unit 2H Top Hole coordinates are  
N: 391,246.41' Latitude: 39°34'04.31"  
E: 1,658,103.92' Longitude: 80°42'46.13"

Bottom Hole coordinates are  
N: 392,135.94' Latitude: 39°34'13.36"  
E: 1,660,027.66' Longitude: 80°42'21.72"

UTM Zone 17, NAD 1983

Top Hole Coordinates Bottom Hole Coordinates  
N: 4,379,844.439m N: 4,380,125.242m  
E: 524,683.443m E: 525,265.023m

Plat orientation and corner and well references  
are based upon the grid north meridian.  
Well location references are based upon the magnetic  
meridian.

BTM Hole  
7.5' Spot

Top Hole  
7.5' Spot

5/8" Rebar

47-103-30552

47-103-30204

2" Pipe

3/4" Iron Pipe

3/8" Pipe

500' Buffer

47-103-30550

47-103-30724

47-103-31173

500' Buffer

47-103-30550

47-103-30552

47-103-30204

47-103-30724

47-103-31173

47-103-30550

47-103-30552

47-103-30204

47-103-30724

47-103-31173

47-103-30550

47-103-30552

47-103-30204

47-103-30724

47-103-31173

47-103-30550

47-103-30552

47-103-30204

47-103-30724

47-103-31173

47-103-30550

47-103-30552

47-103-30204

47-103-30724

47-103-31173

47-103-30550

47-103-30552

47-103-30204

47-103-30724

47-103-31173

47-103-30550

47-103-30552

47-103-30204

47-103-30724

47-103-31173

47-103-30550

47-103-30552

47-103-30204

47-103-30724

47-103-31173

47-103-30550

47-103-30552

47-103-30204

47-103-30724

47-103-31173

47-103-30550

47-103-30552

47-103-30204

47-103-30724

47-103-31173

47-103-30550

47-103-30552

47-103-30204

47-103-30724

47-103-31173

47-103-30550

47-103-30552

47-103-30204

47-103-30724

47-103-31173

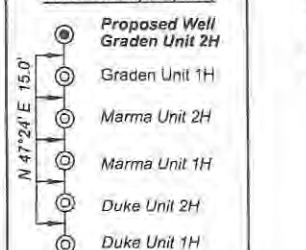
47-103-30550

47-103-30552

#### Leases

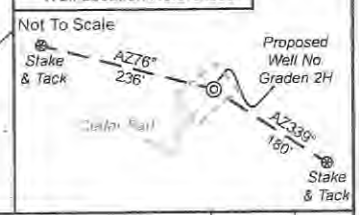
W	Antero Minerals, LLC
X	James E. & Shawn L. Coen
Y	Jenkins Miller
Z	Eddie D. Dallison
AA	Chesapeake Appalachia, LLC
AB	WVDNR
AC	Chesapeake Appalachia, LLC

#### Wellhead Layout (NTS)



	Bearing	Dist.
L1	N 74°44' E	2,267.4'
L2	N 81°55' E	1,923.4'
L3	S 71°53' E	2,400.0'
L4	S 46°17' E	3,737.6'
L5	N 78°48' E	2,031.4'

#### Well Location References



ID	TM-Par	Owner	Bk/Pg	Acres
1	13-40	Kenneth E. & Vicky A. Van Dyne	357/204	42.33
2	4-19	Dallison Lumber Company	53/205	51.50
3	13-26.7	John M. & Stanley D. Pittman	458/837	55.00
4	14-34	Thelma Deaton	493/482	41.00
5	14-20	Dallison Lumber Company	357/270	109.91
6	14-21	Dominion Gathering & Processing, Inc.	460/781	3.20
7		Big Fishing Creek		
8	14-36	Dominion Gathering & Processing, Inc.	460/781	57.41
9	14-22	Ren Realty, LLC	447/844	1.40
10	14-23	Ren Realty, LLC	447/844	1.30
11	14-69	Becky Ann & Charles Edward Moore	489/64	0.50
12	14-16	Antero Midstream, LLC	491/484	54.00

FILE NO: 46-34-G-22  
DRAWING NO: Graden Unit 2H Short Well Plat  
SCALE: 1" = 1000'  
MINIMUM DEGREE OF ACCURACY: Submeter  
PROVEN SOURCE OF ELEVATION: WVDOT, Harrisville, WV

## STATE OF WEST VIRGINIA DEPARTMENT OF ENVIRONMENTAL PROTECTION OIL AND GAS DIVISION

DATE: November 5, 2024  
OPERATOR'S WELL NO. Graden Unit 2H  
API WELL NO. 47-103-03697  
STATE COUNTY PERMIT

WELL TYPE:  OIL  GAS  LIQUID INJECTION  WASTE DISPOSAL  
(IF GAS) PRODUCTION:  STORAGE  DEEP  SHALLOW

LOCATION: ELEVATION: As-Built 1,248' WATERSHED: Fishing Creek QUADRANGLE: Pine Grove  
DISTRICT: Green COUNTY: Wetzel

SURFACE OWNER: Dallison Lumber Company ACREAGE: 51.50

ROYALTY OWNER: Jenkins Miller LEASE NO: ACREAGE: 12/20/2024

PROPOSED WORK:  DRILL  CONVERT  DRILL DEEPER  FRACTURE OR STIMULATE  PLUG OFF OLD FORMATION  
 PERFORATE NEW FORMATION  OTHER PHYSICAL CHANGE IN WELL (SPECIFY) 7,600' TVD

PLUG AND ABANDON  CLEAN OUT AND REPLUG TARGET FORMATION: Marcellus Shale ESTIMATED DEPTH: 11,300' MD

WELL OPERATOR: Antero Resources Corporation DESIGNATED AGENT: Kevin Ellis  
ADDRESS: 1615 Wynkoop Street ADDRESS: 535 White Oaks Blvd.  
Denver, CO 80202 Bridgeport, WV 26330