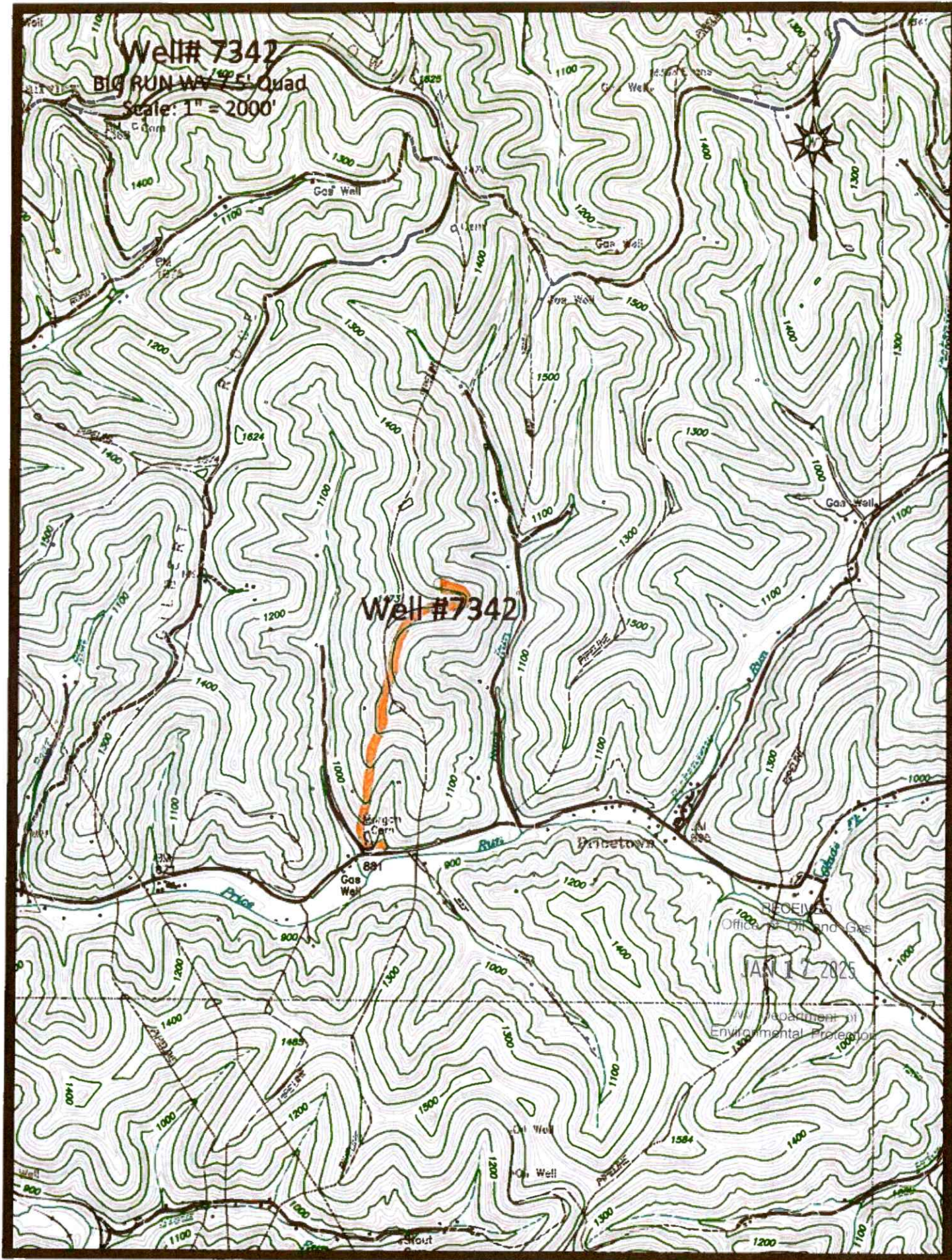


Well# 7342
BIG RUN WY 7.5' Quad
Scale: 1" = 2000'



Well #7342



HOENES
Office of Oil and Gas

JAN 17 2025

NY Department of
Environmental Protection

 Access Road

01/31/2025

Well# 7342
BIG RUN WV 7.5' Quad
Scale: 1" = 500'



Well# 7342

1473

RECEIVED
Office of Oil and Gas

JAN 17 2025

WV Department of
Environment & Protection

Run

1100

 Access Road

01/31/2025

Well# 7342
BIG RUN WV 7.5' Quad
Scale: 1" = 500'



1473

Well# 7342

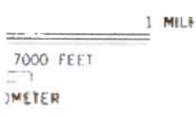
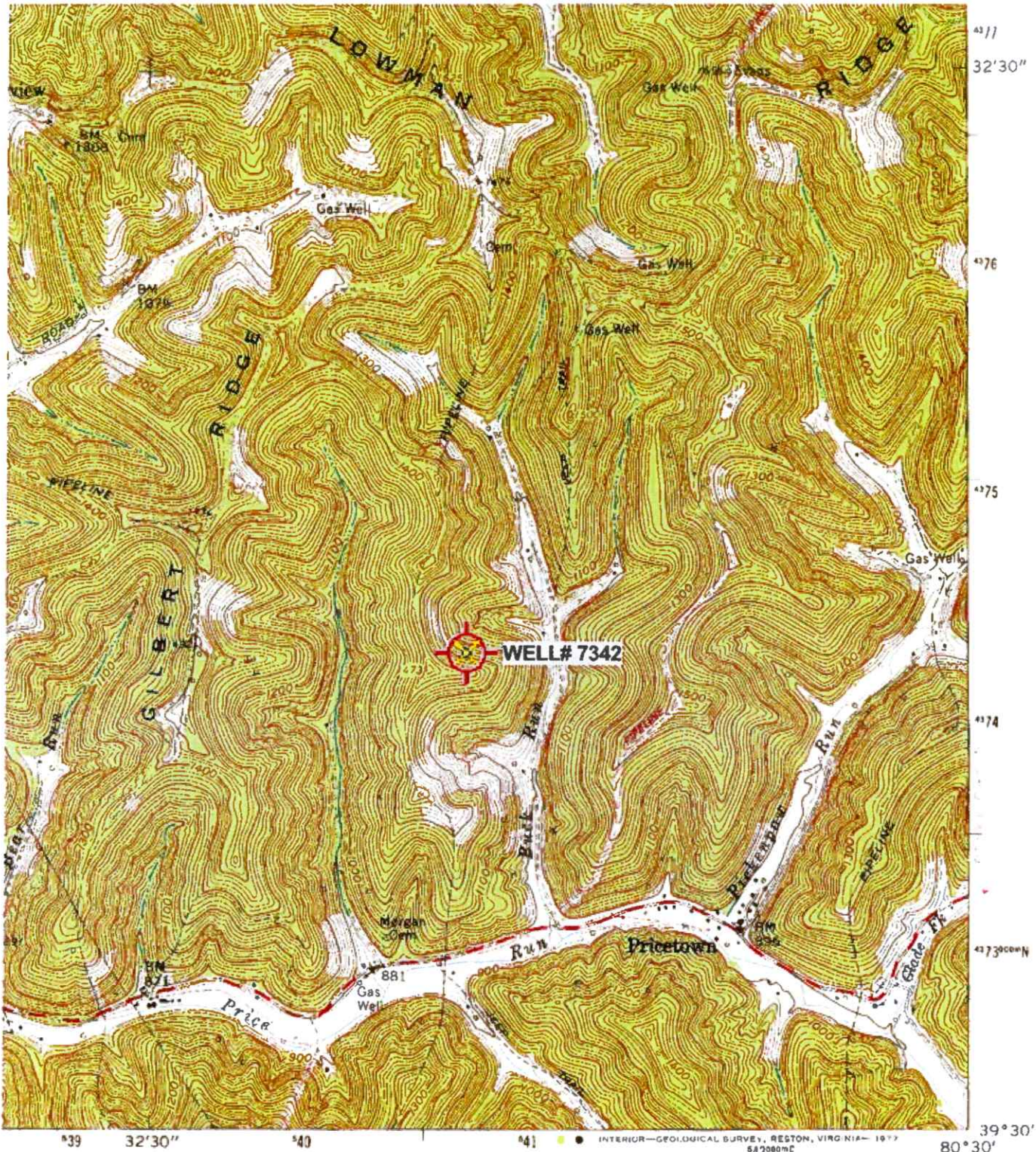
RECEIVED
Office of Oil and Gas

JAN 27 2025

WV Department of
Environmental Protection

Big Run
CK

4710303716



Revisions shown in purple compiled in cooperation with State of West Virginia agencies from aerial photographs taken 1976. This information not field checked.

EQUEST

'Big Run; WV' Scale: 1" = 0.379Mi 610Mt 2.000Ft. 1 Mi = 2.640" . 1 cm = 240Mt

ROAD CLASSIFICATION

- Heavy-duty
- Medium-duty
- Light-duty
- Un-improved dirt
- Slate Route

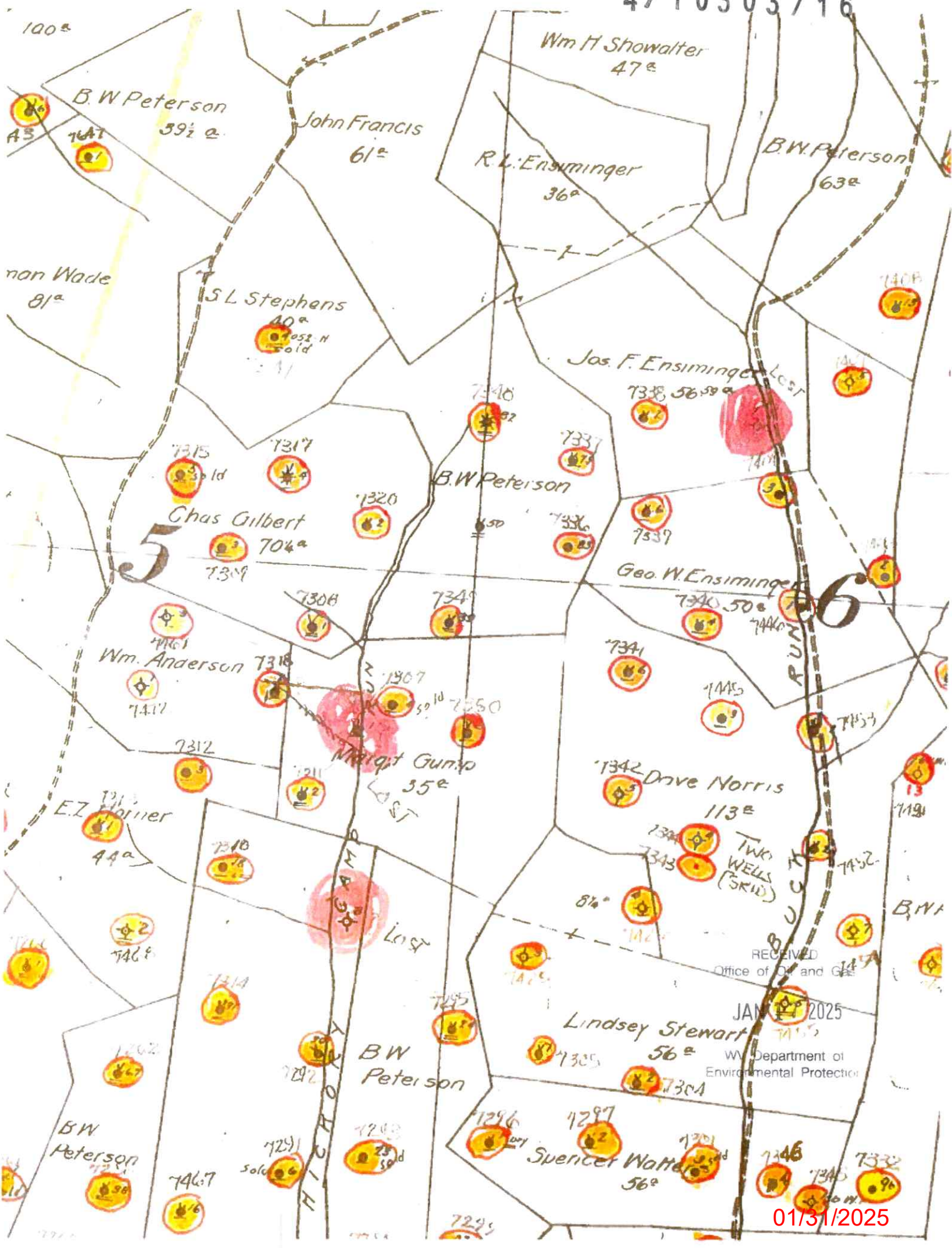
RECEIVED
Office of Oil & Gas

JAN 17 2010

WV Department of Environmental Protection
BIG RUN, W. VA.
SE/4 LITTLETON 15' QUADRANGLE
N3930—W8030/7.5

1960
REPRODUCTION 1976
AMS 4863 II SE—SERIES 01
01/31/2025

47 10303716



01/31/2025

47 1 03 037 16

WW-7
8-30-06



West Virginia Department of Environmental Protection
Office of Oil and Gas
WELL LOCATION FORM: GPS

API: 47-103-72319 WELL NO.: 7342

FARM NAME: NORRIS 5

RESPONSIBLE PARTY NAME: WEST VIRGINIA LAND RESOURCES INC.

COUNTY: WETZEL DISTRICT: GRANT

QUADRANGLE: BIG RUN WV

SURFACE OWNER: R. L ENSMINGER EST

ROYALTY OWNER: _____

UTM GPS NORTHING: 4,374,4585 m

UTM GPS EASTING: 540,803 m GPS ELEVATION: 395 m

The Responsible Party named above has chosen to submit GPS coordinates in lieu of preparing a new well location plat for a plugging permit or assigned API number on the above well. The Office of Oil and Gas will not accept GPS coordinates that do not meet the following requirements:

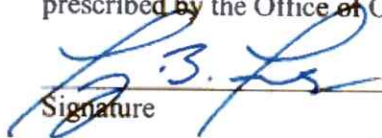
1. Datum: NAD 1983, Zone: 17 North, Coordinate Units: meters, Altitude: height above mean sea level (MSL) – meters.
2. Accuracy to Datum – 3.05 meters
3. Data Collection Method:

Survey grade GPS : Post Processed Differential
Real-Time Differential _____

Mapping Grade GPS _____ : Post Processed Differential _____
Real-Time Differential _____

4. **Letter size copy of the topography map showing the well location.**

I the undersigned, hereby certify this data is correct to the best of my knowledge and belief and shows all the information required by law and the regulations issued and prescribed by the Office of Oil and Gas.


Signature

PS 2002
Title

DECEMBER 26, 2024
Date

RECEIVED
Office of Oil and Gas
JAN 17 2025
wv Department of
Environmental Protection

01/31/2025