

RECEIVED  
Office of Oil and Gas  
23 JAN 2025

WV Department of  
Environmental Protection



QUADRANGLE LOCATION

ROAD CLASSIFICATION

- Heavy-duty
- Medium-duty
- Light-duty
- Unimproved dirt

State Route

BIG RUN, W. VA.

SE/4 LITTLETON 15' QUADRANGLE  
N3930—W8030/7.5

1960

PHOTOAERIAL 02/07/2025

RDS  
2092  
ON REQUEST  
'Big Run, WV' Scale: 1" = 0.379Mi 610Mt 2,000Ft, 1 Mi = 2.640", 1 cm = 240Mt

Revisions shown in purple compiled in cooperation with  
State of West Virginia agencies from aerial photographs  
taken 1976. This information not field checked.

(WALLACE)  
5822 N. NW



Well# 7308

Big Run WW 7.5 Quad

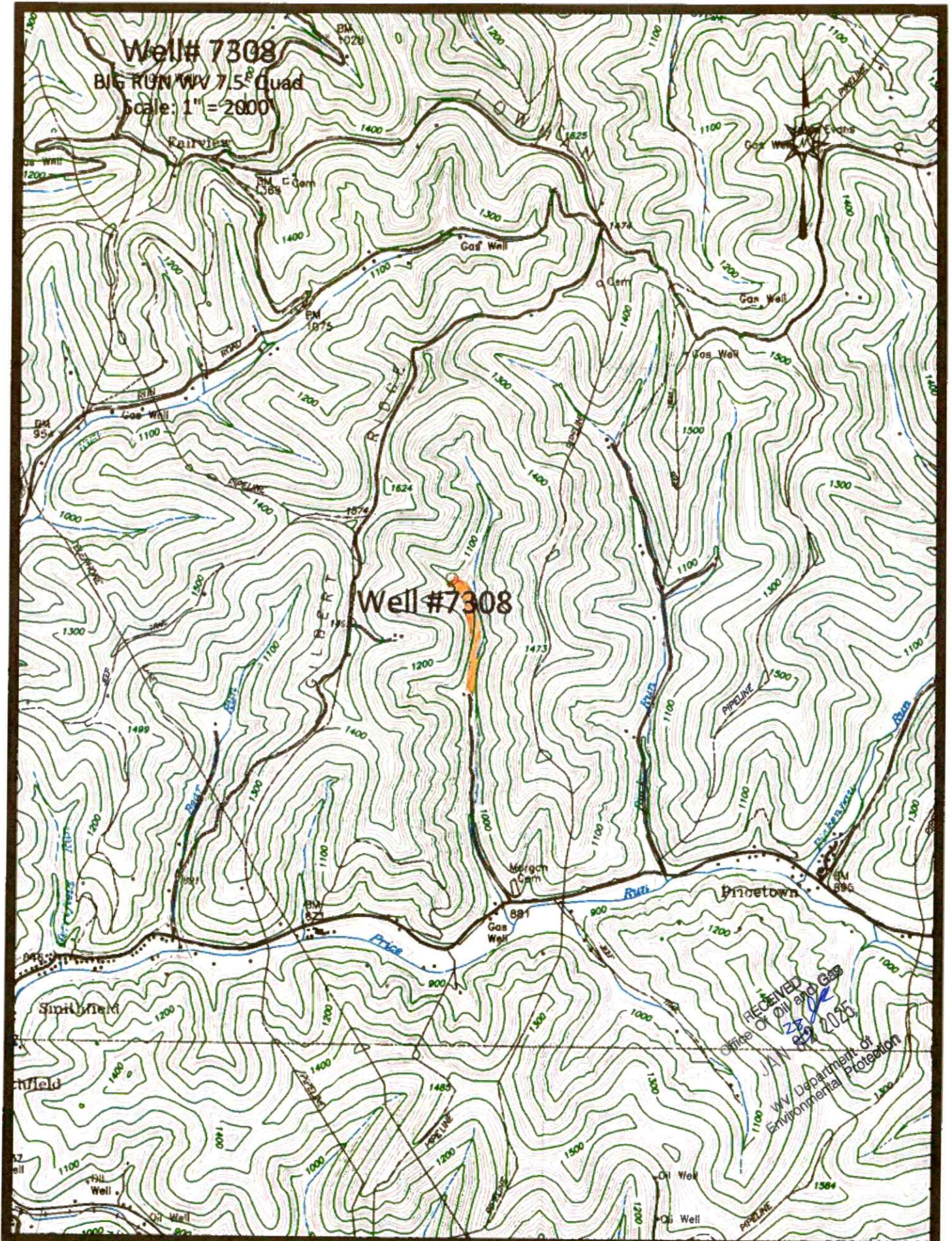
Scale: 1" = 2000'

Well #7308

RECEIVED  
Office of Oil and Gas  
JAN 23 2025  
New York State Department of Environmental Protection

Orange Road

02/07/2025





Well# 7308  
BIG RUN WY 7.5' Quad  
Scale: 1" = 500'



1624

1574

1100

Well# 7308

492

1473

1200

RECEIVED  
Office of Oil and Gas  
2/8/25  
JAN 29 2025  
WV Department of  
Environmental Protection

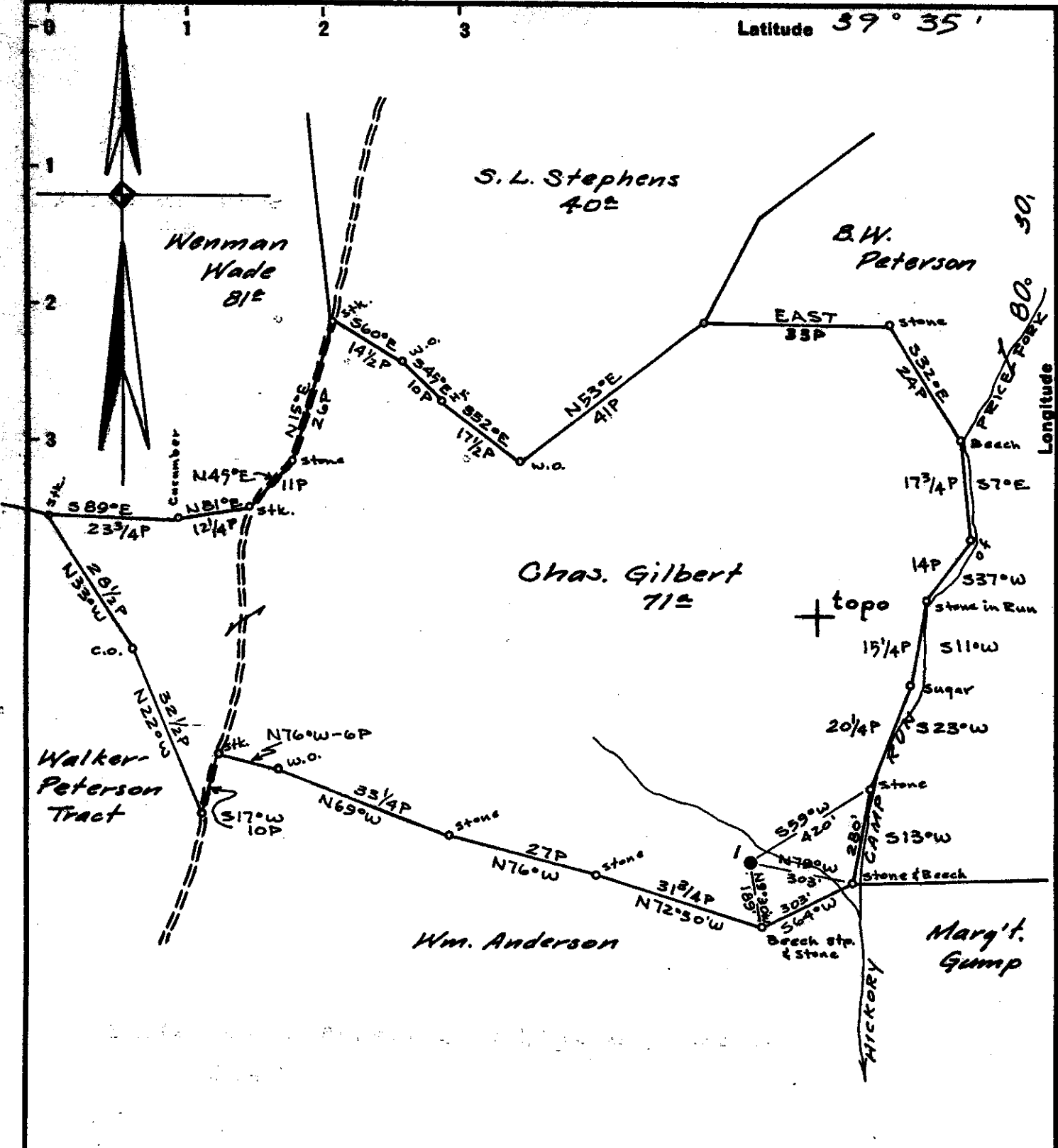
Access Road 

02/07/2025









Surface Owner: FOREST GILBERT, ELKHART, KANSAS.  
 COAL: J.D. Brewer, Agent, Smithfield, W.Va.

New Location...   
 Drill Deeper.....   
 Abandonment.....

MAP N59 N5 E5

Company	SOUTH PENN OIL CO.
Address	PARKERSBURG, W.Va.
Farm	CHARLES GILBERT
Tract	Acres 71 Lease No. 12887
Well (Farm) No.	1 Serial No.
Elevation (Spirit Level)	1058.40' Floor
Quadrangle	LITTLETON
County	WETZEL District GRANT
Engineer	A.C. Hillbert
Engineer's Registration No.	2534
File No.	1341 Drawing No.
Date	May 5, 1961 Scale 1" = 400'

STATE OF WEST VIRGINIA  
 DEPARTMENT OF MINES  
 OIL AND GAS DIVISION  
 CHARLESTON

WELL LOCATION MAP  
 FILE NO. Wet-1133 02/07/2025

+ Denotes location of well on United States Topographic Maps, scale 1 to 62,500, latitude and longitude lines being represented by border lines as shown.  
 - Denotes one inch spaces on border line of original tracing.

47 1 03 037 17

WW-7  
8-30-06

RECEIVED  
Office Of Oil and Gas

JAN 8 2025



WV Department of  
Environmental Protection

West Virginia Department of Environmental Protection  
Office of Oil and Gas

WELL LOCATION FORM: GPS

API: 47-103-31133 WELL NO.: 7308

FARM NAME: GILBERT 1

RESPONSIBLE PARTY NAME: WEST VIRGINIA LAND RESOURCES INC.

COUNTY: WETZEL DISTRICT: GRANT

QUADRANGLE: BIG RUN WV

SURFACE OWNER: COASTAL FOREST RESOURCES CO

ROYALTY OWNER: \_\_\_\_\_

UTM GPS NORTHING: 4,374,729 m

UTM GPS EASTING: 540,121 m GPS ELEVATION: 322 m

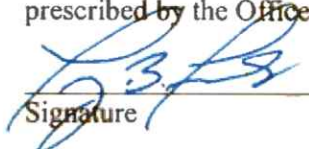
The Responsible Party named above has chosen to submit GPS coordinates in lieu of preparing a new well location plat for a plugging permit or assigned API number on the above well. The Office of Oil and Gas will not accept GPS coordinates that do not meet the following requirements:

- Datum: NAD 1983, Zone: 17 North, Coordinate Units: meters, Altitude: height above mean sea level (MSL) – meters.
- Accuracy to Datum – 3.05 meters
- Data Collection Method:

Survey grade GPS  : Post Processed Differential   
Real-Time Differential \_\_\_\_\_

Mapping Grade GPS \_\_\_\_\_ : Post Processed Differential \_\_\_\_\_  
Real-Time Differential \_\_\_\_\_

4. Letter size copy of the topography map showing the well location.  
I the undersigned, hereby certify this data is correct to the best of my knowledge and belief and shows all the information required by law and the regulations issued and prescribed by the Office of Oil and Gas.

  
Signature

PS 2002  
Title

DECEMBER 31, 2024  
Date

RECEIVED  
Office Of Oil and Gas  
28  
JAN 8 2025  
WV Department of  
Environmental Protection

02/07/2025