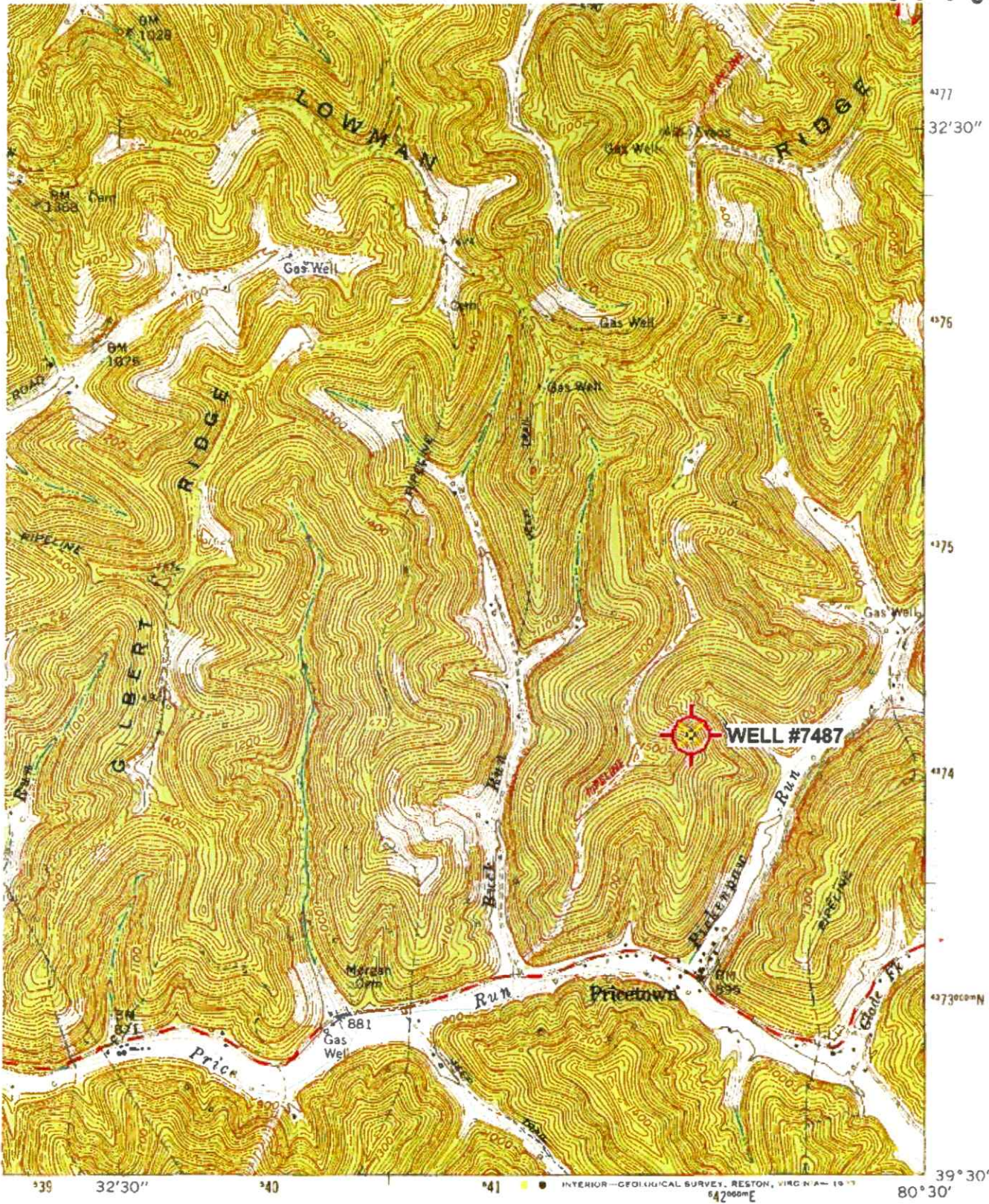


4710303718



1 MILE  
 328 FEET  
 1000 FEET



ROAD CLASSIFICATION

- Heavy-duty —————
- Medium-duty - - - - -
- Light-duty ————
- Unimproved dirt ————

Slate Route

RECEIVED  
 Office of Oil and Gas

JAN 31 2025

WV Department of Environment

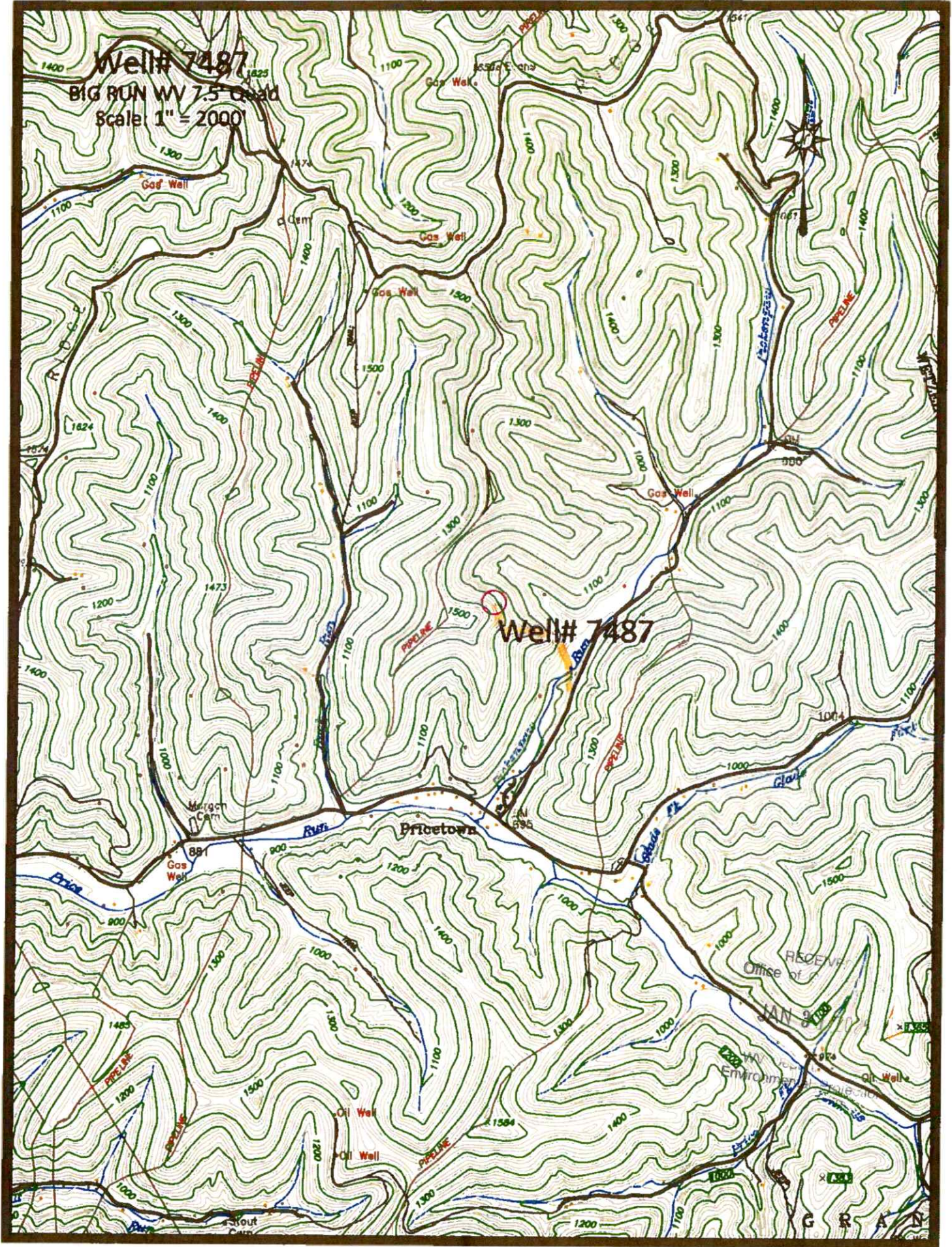
BIG RUN, W. VA.  
 SE/4 LITTLETON 15' QUADRANGLE  
 N3930—W8030/7.5

02/14/2025

Graphic shows a vertical projection with a scale of 1" = 0.379Mi 610M 2 000Ft 1 Mi = 2 640' 1 cm = 240M



Well# 7487  
BIG RUN WV 7.5' Quad  
Scale: 1" = 2000'

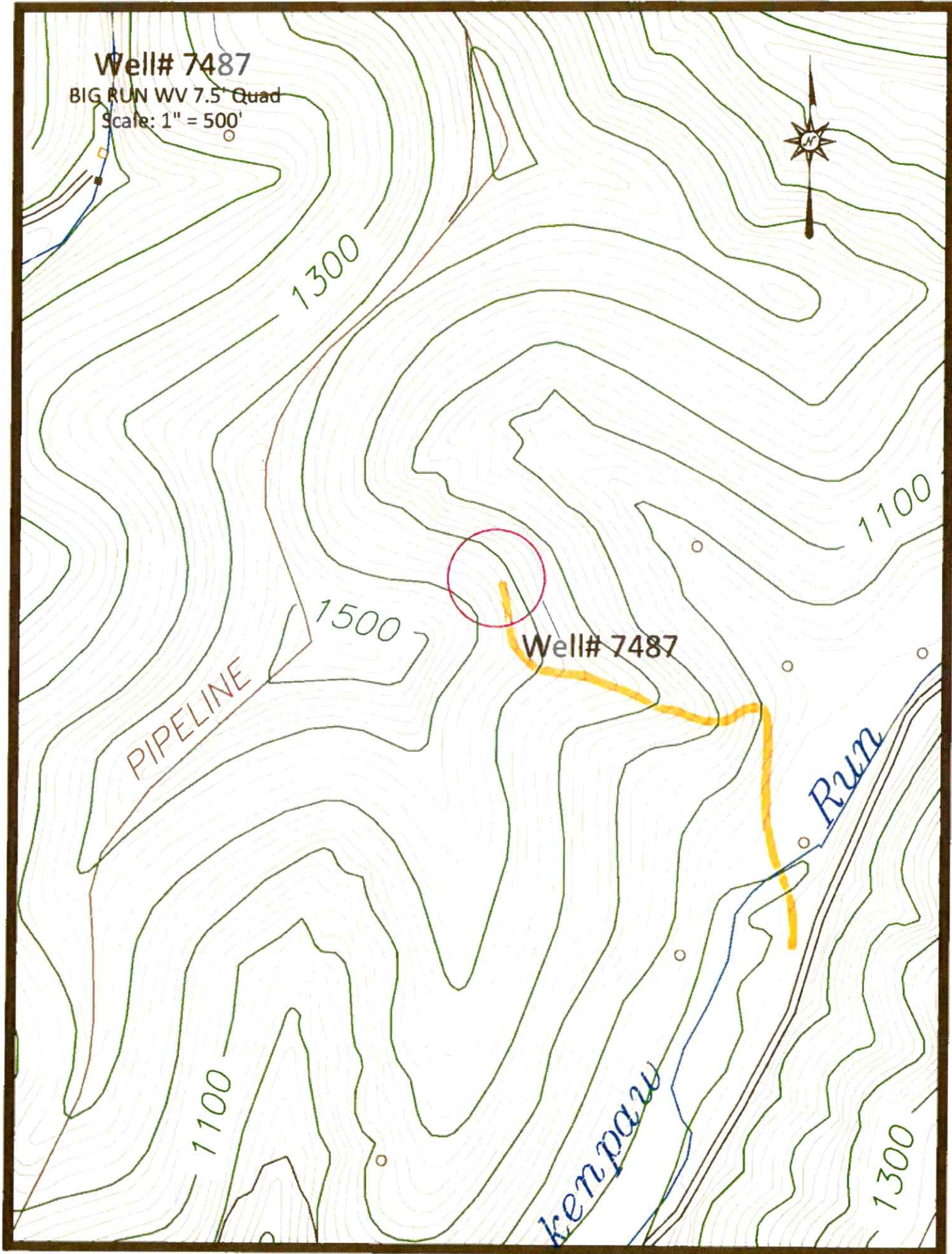



Access Road

02/14/2025



Well# 7487  
BIG RUN WV 7.5' Quad  
Scale: 1" = 500'



Access Road 

02/14/2025

WW-7  
8-30-06



West Virginia Department of Environmental Protection  
Office of Oil and Gas

**WELL LOCATION FORM: GPS**

API: 47-103-72182 WELL NO.: 7487  
 FARM NAME: J.L. STEVENS  
 RESPONSIBLE PARTY NAME: WEST VIRGINIA LAND RESOURCES INC.  
 COUNTY: WETZEL DISTRICT: GRANT  
 QUADRANGLE: BIG RUN W.VA  
 SURFACE OWNER: DOUGLAS JOE SMITH  
 ROYALTY OWNER: \_\_\_\_\_  
 UTM GPS NORTHING: 4,374,332 m  
 UTM GPS EASTING: 541,957 m GPS ELEVATION: 413 m

The Responsible Party named above has chosen to submit GPS coordinates in lieu of preparing a new well location plat for a plugging permit or assigned API number on the above well. The Office of Oil and Gas will not accept GPS coordinates that do not meet the following requirements:

1. Datum: NAD 1983, Zone: 17 North, Coordinate Units: meters, Altitude: height above mean sea level (MSL) – meters.
2. Accuracy to Datum – 3.05 meters
3. Data Collection Method:

Survey grade GPS  : Post Processed Differential \_\_\_\_\_

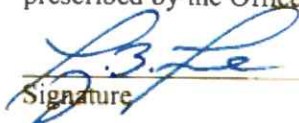
Real-Time Differential

Mapping Grade GPS \_\_\_\_\_ : Post Processed Differential \_\_\_\_\_

Real-Time Differential \_\_\_\_\_

4. **Letter size copy of the topography map showing the well location.**

I the undersigned, hereby certify this data is correct to the best of my knowledge and belief and shows all the information required by law and the regulations issued and prescribed by the Office of Oil and Gas.

  
Signature

P.S. 2002

Title

JANUARY 15, 2025

Date

RECEIVED  
Office of Oil and Gas

JAN 31 2025

WV Department of  
Environmental Protection

02/14/2025