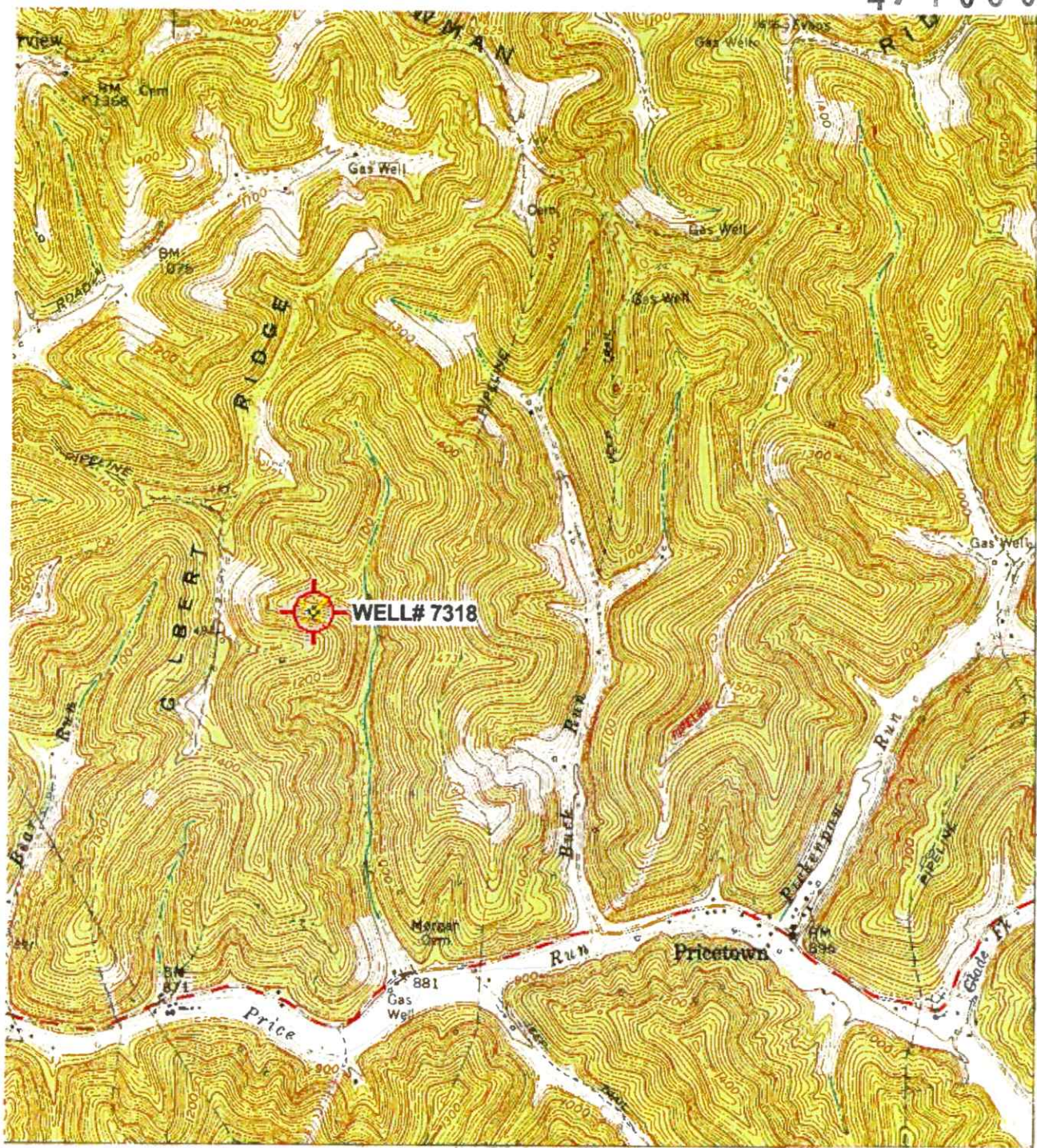


4710303719



32'30"  
476  
475  
474  
473  
39°30'  
80°30'



Revisions shown in purple compiled in cooperation with State of West Virginia agencies from aerial photographs taken 1976. This information not field checked.

REQUEST

ROAD CLASSIFICATION

- Heavy-duty
- Medium-duty
- Light-duty
- Unimproved dirt

State Route

(WALLAGE)  
462 N 1/4  
RECEIVED  
Office of Oil and Gas

JAN 31 2025

BIG RUN, W. VA. WV Department of Environmental Protection  
SE 1/4 LITTLETON 15' QUADRANGLE  
N3930—W8030/7.5

1960

AMS 4863 II SE—SERIES V854



Well# 7318

BIG RUN WV 7.5' Quad  
Scale: 1" = 500'

1624

1574



1400

T  
R  
L  
B  
L  
D

1492

Well# 7318

1200

1100

1475

1400

RECEIVED  
Office of Oil and Gas

JAN 31 2025

WV Department of  
Environmental Protection

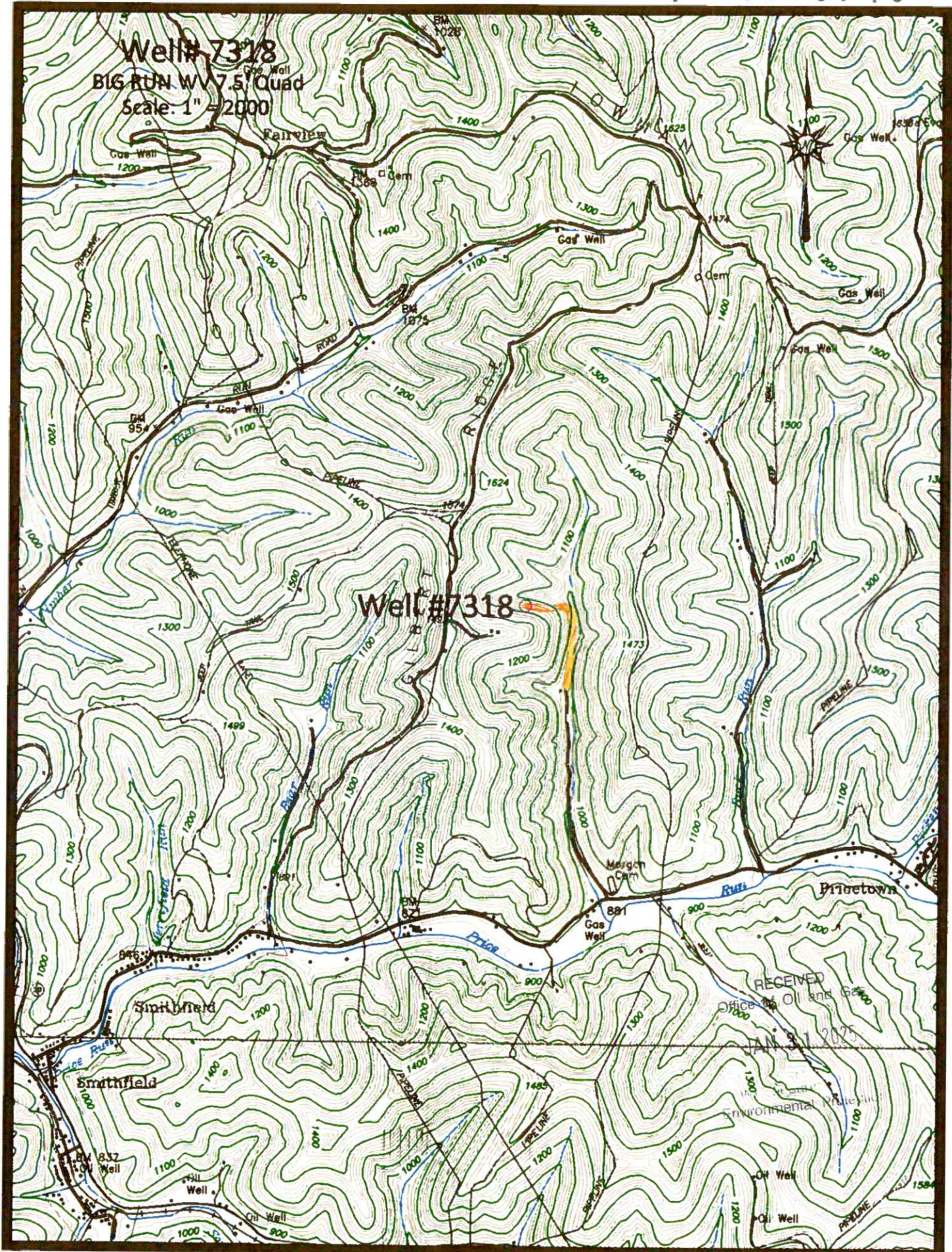
Access Road

02/14/2025





Well# 7318  
BIG RUN WV 7.5' Quad  
Scale: 1" = 2000



Well#7318

Access Road

02/14/2025

RECEIVED  
Office of Oil and Gas  
JAN 31 2025

Environmental Protection



WW-7  
8-30-06



West Virginia Department of Environmental Protection  
Office of Oil and Gas  
**WELL LOCATION FORM: GPS**

API: 47-103-72431 WELL NO.: 7318  
 FARM NAME: WM. ANDERSON 2  
 RESPONSIBLE PARTY NAME: WEST VIRGINIA LAND RESOURCES INC.  
 COUNTY: WETZEL DISTRICT: GRANT  
 QUADRANGLE: BIG RUN WV  
 SURFACE OWNER: STEPHEN D. SHOWALTER  
 ROYALTY OWNER: \_\_\_\_\_  
 UTM GPS NORTHING: 4,374,568. m  
 UTM GPS EASTING: 540,009 m GPS ELEVATION: 354 m

The Responsible Party named above has chosen to submit GPS coordinates in lieu of preparing a new well location plat for a plugging permit or assigned API number on the above well. The Office of Oil and Gas will not accept GPS coordinates that do not meet the following requirements:

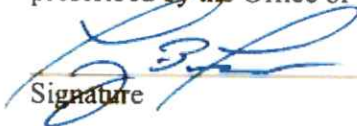
1. Datum: NAD 1983, Zone: 17 North, Coordinate Units: meters, Altitude: height above mean sea level (MSL) - meters.
2. Accuracy to Datum - 3.05 meters
3. Data Collection Method:

Survey grade GPS  : Post Processed Differential   
 Real-Time Differential \_\_\_\_\_

Mapping Grade GPS \_\_\_\_\_ : Post Processed Differential \_\_\_\_\_  
 Real-Time Differential \_\_\_\_\_

4. Letter size copy of the topography map showing the well location.

I the undersigned, hereby certify this data is correct to the best of my knowledge and belief and shows all the information required by law and the regulations issued and prescribed by the Office of Oil and Gas.

  
Signature

PS 2002

Title

JANUARY 15, 2025

Date

RECEIVED  
Office of Oil and Gas

JAN 31 2025

WV Department of  
Environmental Protection