

RECEIVED  
Office of Oil and Gas  
FEB 25 2025  
WV Department of  
Environmental Protection



Revisions shown in purple compiled in cooperation with State of West Virginia agencies from aerial photographs taken 1976. This information not field checked.

QUEST

ROAD CLASSIFICATION

- Heavy-duty Light-duty
- Medium-duty Unimproved dirt
- Slate Route

**BIG RUN, W. VA.**  
SE/4 LITTLETON 15' QUADRANGLE  
N3930—W8030/7.5

1960  
PHOTO REVISION 1976  
AMS 4863 II SE—SERIES V854

(WALLACE)  
4862 N MW

Well# 7344  
BIG RUN WV 7.5' Quad  
Scale: 1" = 500'



Well# 7344

1473

1100

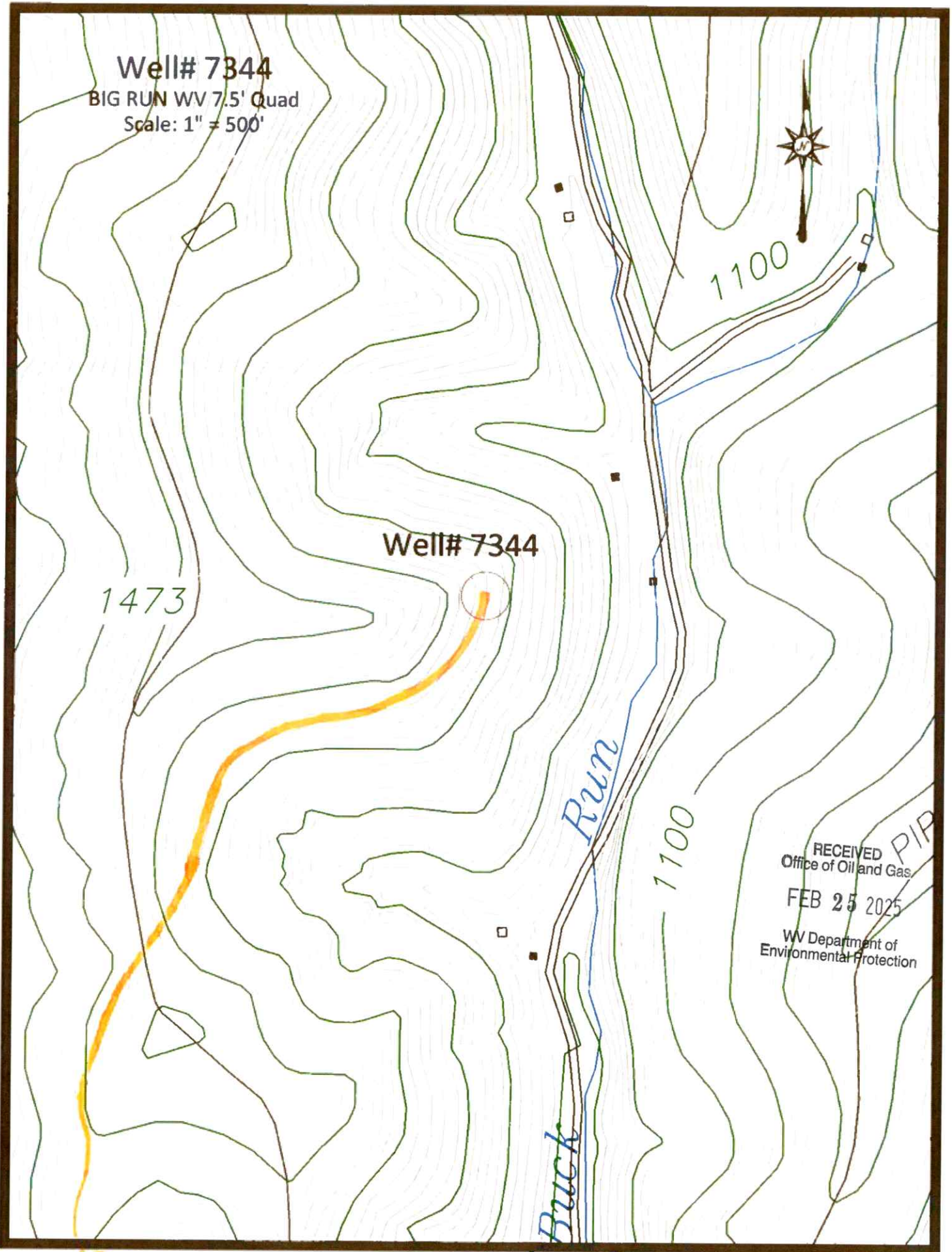
1100

Buck Run

RECEIVED  
Office of Oil and Gas  
FEB 25 2025  
WV Department of  
Environmental Protection

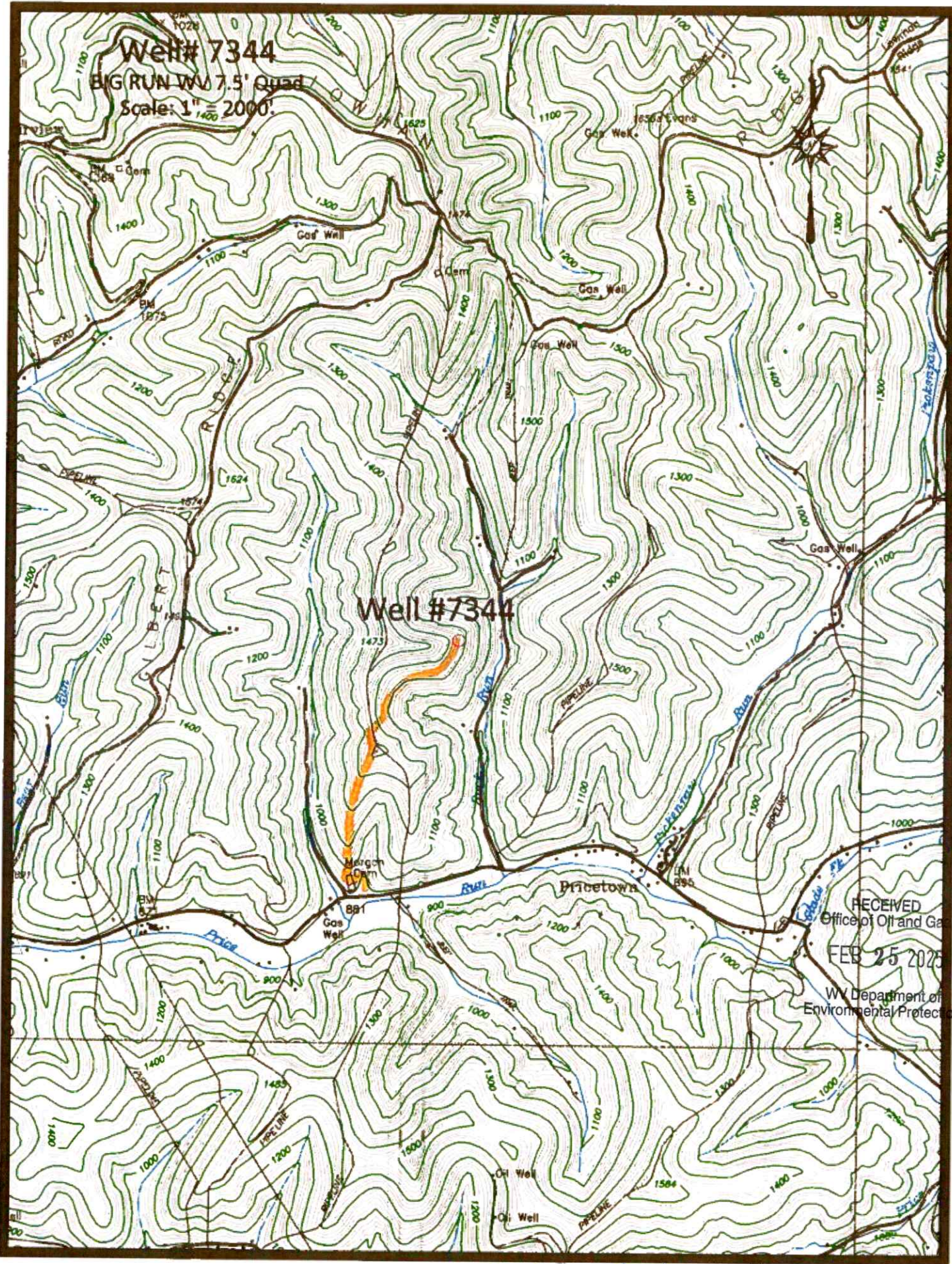
Access Road

03/14/2025



Well # 7344  
BIG RUN WW 7.5' Quad  
Scale: 1" = 2000'

Well #7344



RECEIVED  
Office of Oil and Gas  
FEB 25 2025  
WV Department of  
Environmental Protection

▲ AH1966 Road

03/14/2025

4710303723

WW-7  
8-30-06



West Virginia Department of Environmental Protection  
Office of Oil and Gas  
**WELL LOCATION FORM: GPS**

API: 47-103-72320 WELL NO.: 7344

FARM NAME: ENSMINGER 4

RESPONSIBLE PARTY NAME: WEST VIRGINIA LAND RESOURCES INC.

COUNTY: WETZEL DISTRICT: GRANT

QUADRANGLE: BIG RUN WV

SURFACE OWNER: R L ENSMINGER

ROYALTY OWNER: \_\_\_\_\_

UTM GPS NORTHING: 4,374,396 m

UTM GPS EASTING: 540,985 m GPS ELEVATION: 381 m

The Responsible Party named above has chosen to submit GPS coordinates in lieu of preparing a new well location plat for a plugging permit or assigned API number on the above well. The Office of Oil and Gas will not accept GPS coordinates that do not meet the following requirements:

- Datum: NAD 1983, Zone: 17 North, Coordinate Units: meters, Altitude: height above mean sea level (MSL) – meters.
- Accuracy to Datum – 3.05 meters
- Data Collection Method:  
Survey grade GPS  : Post Processed Differential   
Real-Time Differential \_\_\_\_\_  
Mapping Grade GPS \_\_\_\_\_ : Post Processed Differential \_\_\_\_\_  
Real-Time Differential \_\_\_\_\_

RECEIVED  
Office of Oil and Gas  
FEB 25 2025  
WV Department of  
Environmental Protection

4. Letter size copy of the topography map showing the well location.

I the undersigned, hereby certify this data is correct to the best of my knowledge and belief and shows all the information required by law and the regulations issued and prescribed by the Office of Oil and Gas.

  
Signature

PS 2002  
Title

FEBRUARY 3, 2025  
Date

03/14/2025