

4710303732

Well# 7430  
BIG RUN WV 7.5' Quad  
Scale: 1" = 500'



1100

1300

Well# 7430

1500

PIPELINE

1100

Buck Run

RECEIVED  
Office Of Oil and Gas

APR 24 2020

WV Department of  
Environmental Protection

1100

7430

05/02/2025

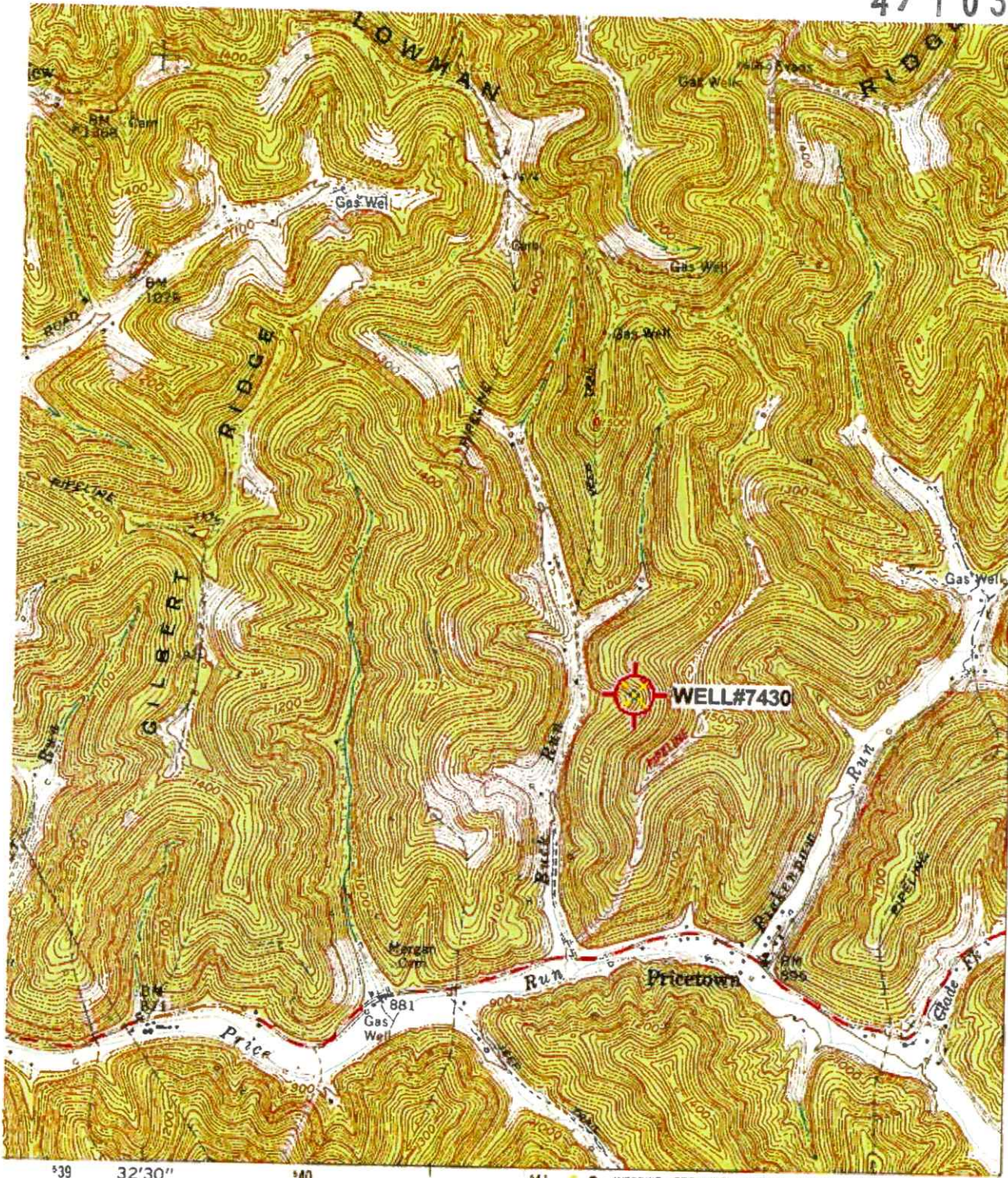


[illegible]

7112A



4710303732



4271  
32'30"

4276

4275

4274

4273000M

39°30'  
80°30'

1 MILE  
000 FEET  
ETER



QUADRANGLE LOCATION

Revisions shown in purple compiled in cooperation with State of West Virginia agencies from aerial photographs taken 1976. This information not field checked.

QUEST

ROAD CLASSIFICATION  
Heavy-duty  
Office Of Oil and Gas  
Medium duty  
Lght duty  
Unimproved dirt

APR 24 2025

Slate Route

WV Department of  
Environmental Protection

BIG RUN, W. VA.

SE/4 LITTLETON 15' QUADRANGLE  
N3930—W8030/7.5

1960

PHOTO REVISIO 1976

AMS 4883 II SE—SERIES V854

(WALLACE)  
4882 N NW

'Big Run: WV' Scale: 1" = 0.379Mi 610M 2 000Ft 1 Mi = 2 640" 1 cm = 240M

05/02/2025



47 1 0 3 0 3 7 3 2



RECEIVED  
Of Oil and Gas  
APR 24 2025  
Department of  
Environmental Protection

103-03721  
103-72321

103-70216

103-72323

103-03646

103-03577  
103-72324

103-30609

103-03547

103-72325

103-03568  
103-72322

05/02/2025



4710303732

WW-7  
8-30-06

West Virginia Department of Environmental Protection  
Office of Oil and Gas

**WELL LOCATION FORM: GPS**

API: 47-103-30609 WELL NO.: 7430  
 FARM NAME: B W PETERSON 49  
 RESPONSIBLE PARTY NAME: WEST VIRGINIA LAND RESOURCES INC.  
 COUNTY: WETZEL DISTRICT: GRANT  
 QUADRANGLE: BIG RUN WV  
 SURFACE OWNER: JOHN DALE COEN  
 ROYALTY OWNER: \_\_\_\_\_  
 UTM GPS NORTHING: 4,374,367 m  
 UTM GPS EASTING: 541,438 m GPS ELEVATION: 349 m

The Responsible Party named above has chosen to submit GPS coordinates in lieu of preparing a new well location plat for a plugging permit or assigned API number on the above well. The Office of Oil and Gas will not accept GPS coordinates that do not meet the following requirements:

1. Datum: NAD 1983, Zone: 17 North, Coordinate Units: meters, Altitude: height above mean sea level (MSL) – meters.

2. Accuracy to Datum – 3.05 meters

3. Data Collection Method:

Survey grade GPS X : Post Processed Differential X

Real-Time Differential \_\_\_\_\_

Mapping Grade GPS \_\_\_\_\_ : Post Processed Differential \_\_\_\_\_

Real-Time Differential \_\_\_\_\_

4. **Letter size copy of the topography map showing the well location.**

I the undersigned, hereby certify this data is correct to the best of my knowledge and belief and shows all the information required by law and the regulations issued and prescribed by the Office of Oil and Gas.

Signature

PS 2002

Title

FEBRUARY 17, 2025

Date

RECEIVED  
Office Of Oil and Gas

APR 24 2025

WV Department of  
Environmental Protection

05/02/2025