

39° 40' 00"

Latitude

80° 27' 30"

Longitude

+
1.765
1.03w

Topo Location

7.5' Loc. _____ 15' Loc. _____
_____ (calc.) _____

Company Pitt + WV Gas Co

Farm T M HASKINS #5219

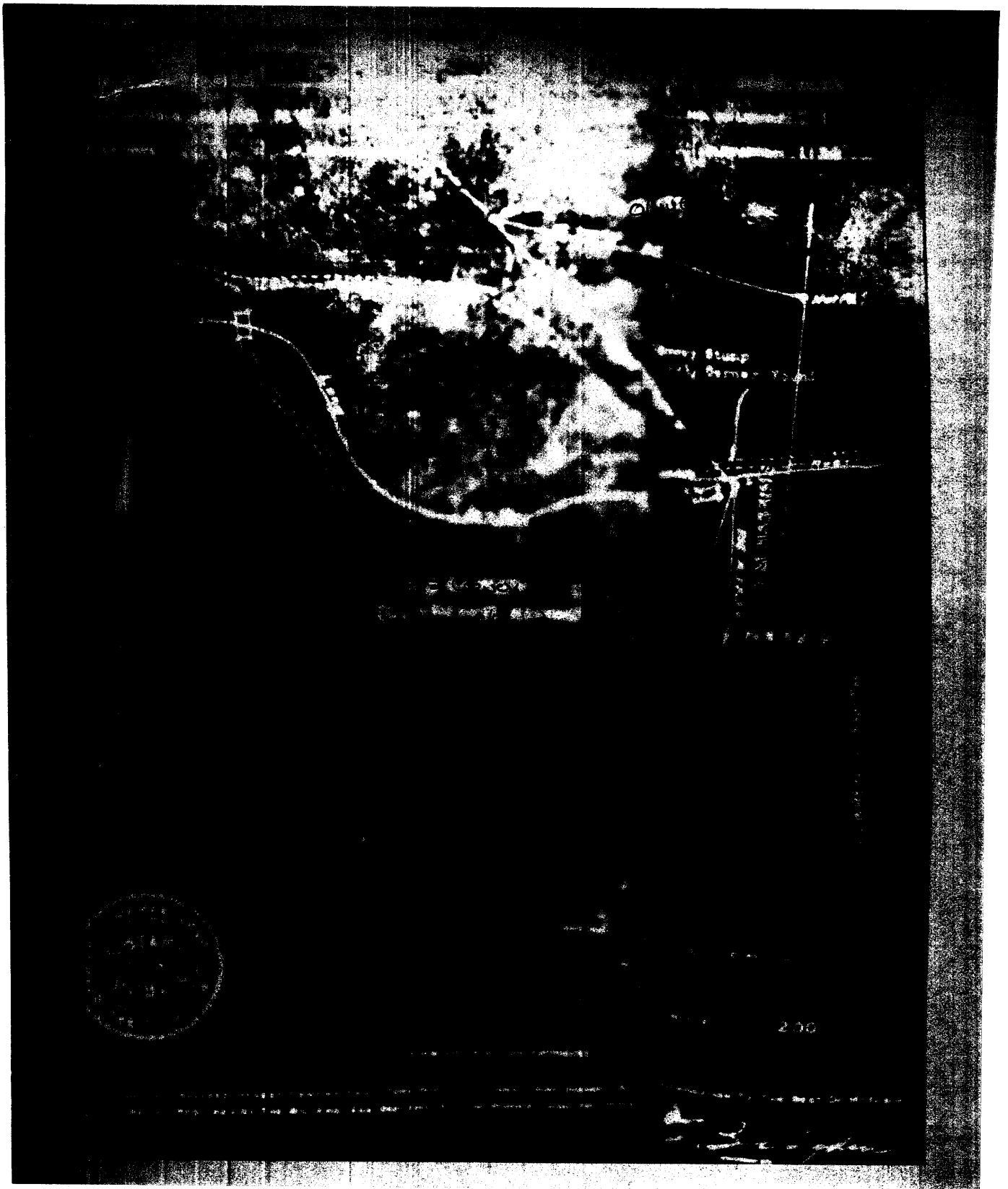
15' Quad _____
(sec.)

7.5' Quad Hundred

District Church

WELL LOCATION PLAT

County 103 Permit 30028



Church

OLIVE

S CARNEY
(CARRIAGE LANE)

MISSISSIPPI

3210

CLARENCE SMITH



1-200

I, The Undersigned Henry Carney Trust, do hereby certify that the above is a true and correct copy of the original as the same is on file in my office and is a true and correct copy of the original as the same is on file in my office.

[Handwritten Signature]

Church District, Wetzel County, W. Va.

By Pittsburgh & W. Va. Gas Co., Clarksburg, W. Va.

Abandoned under permit Wet-28.

On 9 acres, surface owned by F. A. Bushner, Newdale, W. Va., and minerals by John and Joseph Shiben, New Martinsville, W. Va.

Well completed Jan. 4, 1917.

Elevation, 1139' L.

1 1/2" conductor, 11'; 10" casing, 294'; 8 1/2", 1305'; 6 1/2", 2024'.

Coal was encountered at 440-442, 480-484, 722-727, and 828-834'.

Abandonment reported to Dept. of Mines Nov. 10, 1930.

Located Oct. 18, 1916. Began drilling, Dec. 6, 1916; completed,

Jan. 4, 1917; began drilling deeper, Oct. 13, 1930;

completed deepening, Oct. 30, 1930.

Well was not shot.

Fresh water at 75 and 150'.

6 1/2" hole. Gas well. Oil

Record to RCF from Mrs. Griffith Sept. 10, 1938.

Top. Bottom. Thickness.

	Top.	Bottom.	Thickness.
Water at 75'			
Water at 150'			
Coal, (Native)	440	442	2
Coal, Fairview (Waynesburg) (gas at 522')	480	484	4
Coal, Mapletown (Sewickley)	722	727	5
Coal, Pittsburgh	828	834	6
Slate, dark, soft	834	850	16
Sand, white, hard	850	865	15
Slate-Lime, dark, hard and soft	865	929	64
Murphy Sand, light, hard and close	929	1012	83
Slate-Red rock, soft	1012	1170	158
Sand, light, hard (gas, 1172-78')	1170	1190	20
Red rock, soft	1190	1228	38
Little Dunkard Sand, light, hard	1228	1262	34
Slate, dark, soft	1262	1292	30
Big Dunkard Sand, light, hard	1292	1356	64
Slate-Shell, dark, soft	1356	1487	131
Gas Sand, white, hard	1487	1522	35
Slate-Shell, dark, soft	1522	1591	69
1st Salt Sand, light, hard (gas, 1611-1613')	1591	1638	47
Slate, dark, soft	1638	1657	19
2nd Salt Sand, light, soft	1657	1685	28
Slate, dark, soft	1685	1790	105
3rd Salt Sand, white, medium	1790	1870	80
Slate-Shell, dark, hard and soft	1870	1915	45
Lime, dark, hard	1915	1925	10
Slate, dark, soft	1925	1934	9
Red rock, medium	1934	1955	21
Slate-Shell, dark, hard and soft	1955	2014	59
Big Lime, white, hard	2014	2083	69
Big Injun Sand (gas, 2084-86'; gas, 2184-86')	2083	2309	226
Slate, dark, soft	2309	2375	66
Gritty lime, white, hard	2375	2440	65
Sand, white, hard	2440	2465	25
Slate, dark, soft	2465	2475	10
Lime, white, hard	2475	2570	95

(OVER)

T. M. KASKINS NO. 5219 WELL (Continued).

	Top.	Bottom.	Thickness.
Slate, white, soft	2570	- 2600	30
Lime, white, hard	2600	- 2685	85
Slate, white, soft	2685	- 2760	75
Lime, white, hard	2760	- 2773	13
Slate, dark, soft	2773	- 2778	5
Crity lime, white, hard	2778	- 2815	37
Slate, dark, soft	2815	- 2840	25
Fifty-foot Sand, white, hard	2840	- 2860	20
Thirty-foot Sand, white, hard	2860	- 2875	15
Slate, dark, soft	2875	- 2890	15
30-Ft. Stray Sand, white, hard	2890	- 2915	25
Slate, dark, soft (SLM, 2955')	2915	- 2955	40
Carbon Sand, white, hard	2955	- 2990	35
Break	2990	- 2993	3
4th Sand, white, hard (gas, 2995-3000)	2993	- 3008	15
Slate, white, soft	3008	- 3030	22
5th Sand, white, hard (oil, 3038-41')	3030	- 3046	16
Slate, dark, soft	3046	- 3125	79
Lime-Shell, white, open (gas, 3128-30')	3125	- 3133	8
Slate, white, soft	3133	- 3150	17
Lime, white, open	3150	- 3155	5
Slate, dark	3155	- 3220	65
Lime, white, hard	3220	- 3228	8
Slate, dark, soft	3228	- 3233	5
Total depth		3233	