

39°35'00"

80°35'00"

Latitude

+
 0.925
 0.545

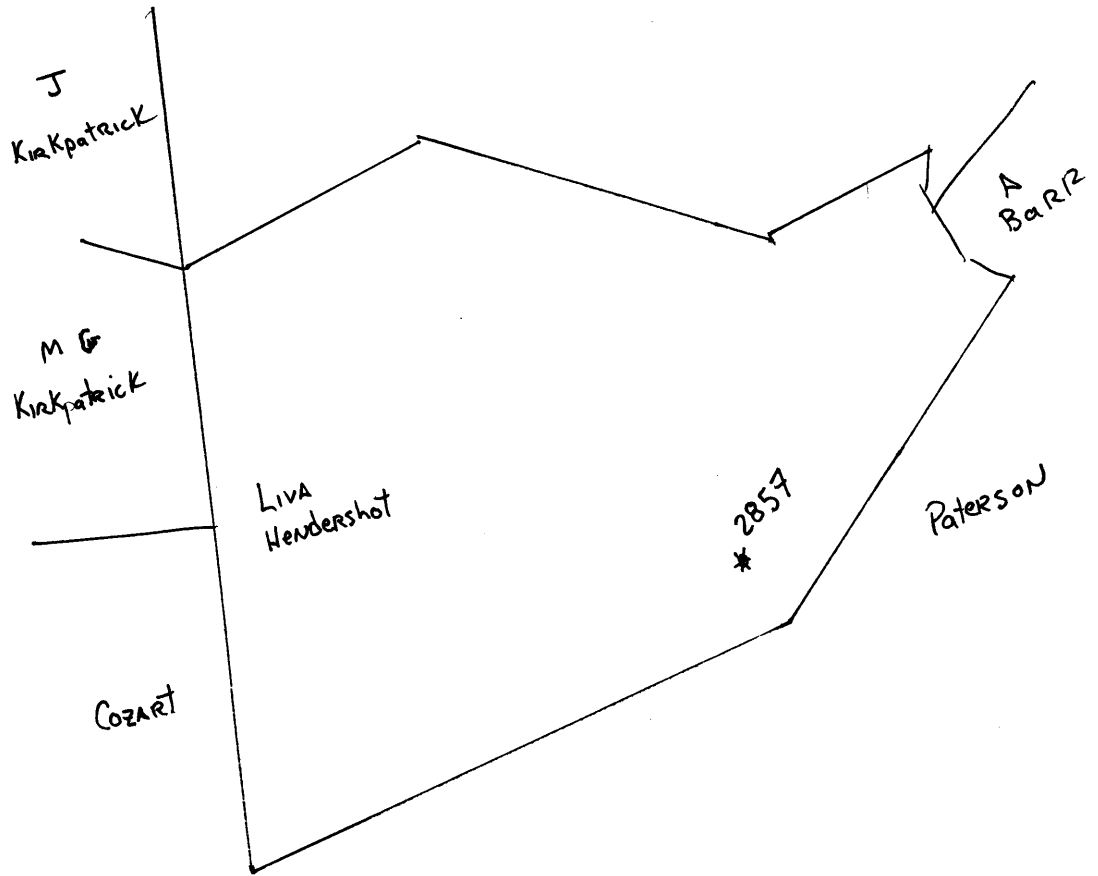
Longitude

Topo Location

7.5' Loc. _____ **15' Loc.** _____
 _____ **(calc.)** _____

Company Hope Nat Gas Co
Farm Liva E Hendershot #2857
15' Quad _____
(sec.)
7.5' Quad Big Run
District GRANT

WELL LOCATION PLAT
County 103 **Permit** 30042



Grant District, Wetzel County, W. Va.
By Hope Natural Gas Co., 445 W. Main St., Clarksburg, W. Va.
On 107 acres, surface owned by Emily Haught, Jacksonburg, W. Va.;
owner of mineral rights, unknown.
Drilled prior to June 1, 1929.
Elevation, 1083' L.
10" casing, 724'; 8 1/2", 1376'.
Coal was encountered at 110' and 768-778'.
Abandonment reported to Dept. of Mines Feb. 12, 1931.

WET-42-A

	Top.	Bottom.
Native coal	110	
Pittsburgh Coal	768	778
Big Dunkard Sand	1260	1300

(RECORD INCOMPLETE)

RECORD FROM TOLLEFSON SEPT. 13, 1938:

	Top.	Bottom.
Native coal	110	...
Pittsburgh Coal	768	778
Big Dunkard Sand	1260	1300
Gas Sand	1373	1457
First Salt Sand (water, 1568')	1550	1593
Second Salt Sand	1614	1652
Third Salt Sand	1710	1792
Harten Sand (gas, 1909')	1909	1930
Little Line	1940	1958
Pencil Cave	1958	1980
Big Line	1980	2035
Big Injun Sand (gas, 2041'; gas, 2046'; gas, 2090-96')	2035	2262
Red rock	2705	2715
Gordon Stray Sand	2820	2828
Gordon Sand	2830	2868
Fourth Sand	2909	2913
Total depth		2913

Well was shot at 2040-2046'.
Salt water at 1568'.
Gas well; now exhausted.
Record sent on Dept. of Mines blank, carbon probably of
record to EM, dated Feb. 24, 1931.