

Latitude

Longitude

+

1.67s

1.75w

Topo Location

7.5' Loc. _____ 15' Loc. _____

_____ (calc.) _____

Company C.B. Smith

Farm HENRY ELSON #1

15' Quad _____
(sec.)

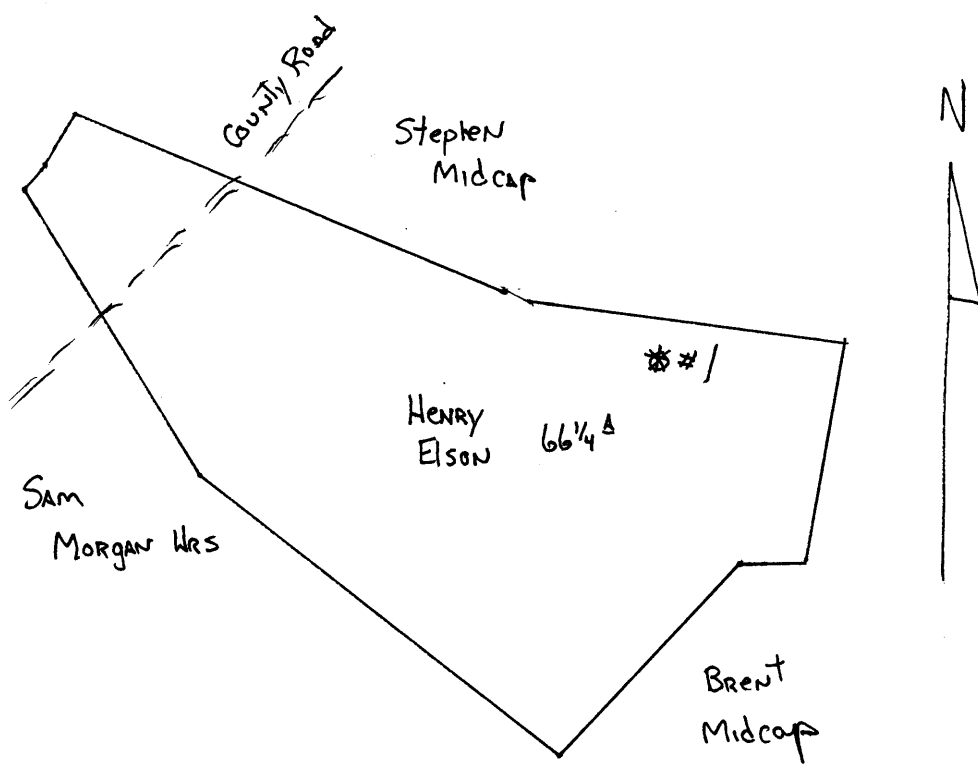
7.5' Quad PORTERS FALLS

District GREEN

WELL LOCATION PLAT

County 103 Permit 30063

30063
Green dist



Green District, Wetzel County, W. Va.
 by C. E. Smith et al., Parkersburg, W. Va.
 On 66 $\frac{1}{2}$ acres, surface owned by Henry Wilson, New Martinsville, W. Va.
 Before permits were issued Spring, 1930. (?)
 Elevation, 810' B.
 10" conductor, 14'; 8" casing, 481'; 6", 1480'.
 Coal was encountered at 1045' (8" thick?).
 Completion reported to Dept. of Mines Sept. 22, 1931.
 Well was shot at 1975-1982', but not produced.
 Dry hole.

WET-63-A

	Top.	Bottom.	Thickness.
Dunkard Sand, white	1480	- 1521	41
1st Salt Sand, white	1670	- 1725	55
2nd Salt Sand, white	1855	- 1885	30
3rd Salt Sand, white	1930	- 1965	35
Black shale (break)	1965	- 1975	10
Sand, white (gas, 1975-1978', soon blew out)	1975	- 2003	28
Marion Sand	2043	- 2053	10
Little Lime	2152	- 2160	8
Pencil Cave	2160	- 2165	5
Big Lime	2165	- 2265	100
Big Injun Sand, to bottom	2265	- 2363	98