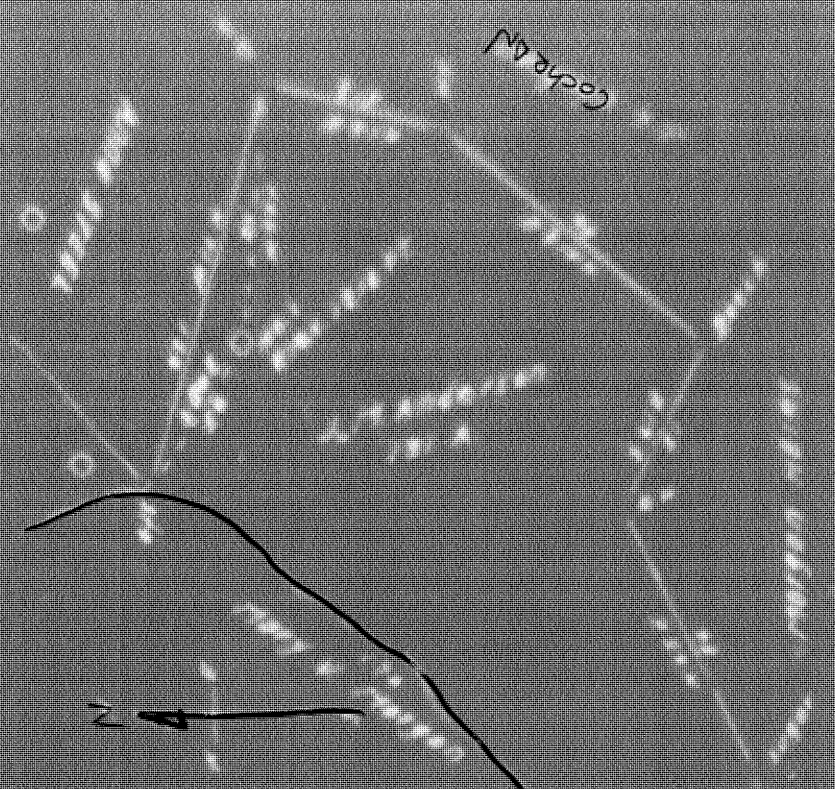


30139



I the undersigned hereby certify that this map is correct and shows all the information to the best of my knowledge and belief required by the oil and gas section of the Mining Laws of West Virginia.

SCALE 1" = 40 Yds.

SURVEYOR FOR WETZEL CO. WEST VIRGINIA

Acknowledged before me a Notary Public for WETZEL Co. West Virginia, this 27 day of November 1955. My Commission expires September 24, 1960.

Green Dist

Green District, Wetzel County, W. Va.

By Mountain Iron & Supply Co., Parkersburg, W. Va. (Max Beren, Treas.)

On 1 1/2 acres, surface owned by J. M. Anderson.

Elevation, 1214' F.

13" conductor, 16'; 8 1/2" casing, 1412'; 6-5/8", 2127'.

No coal was encountered.

5-3/16" casing from top of Gordon to approximately 2515'.

Abandonment reported to Dept. of Mines Nov. 22, 1934.

Well was not shot.

No water.

Producing hole.

WET-139-A

	Top.	Bottom.	Thickness.
1st Salt Sand	1530	- 1700	170
2nd Salt Sand	1705	- 1775	70
Maxton Sand	1965	- 2045	80
Big Injun Sand (show of oil and gas)	2170	- 2425	255
Berea Sand	2770	- 2785	15
Gordon Sand (oil and gas)	3016	- 3022	6
Total depth		3040	