

Latitude

Longitude

2.47s
.79w

Topo Location

7.5' Loc. _____ 15' Loc. _____
_____ (calc.) _____

Company South Penn Oil Co

Farm Sarah Newman #11

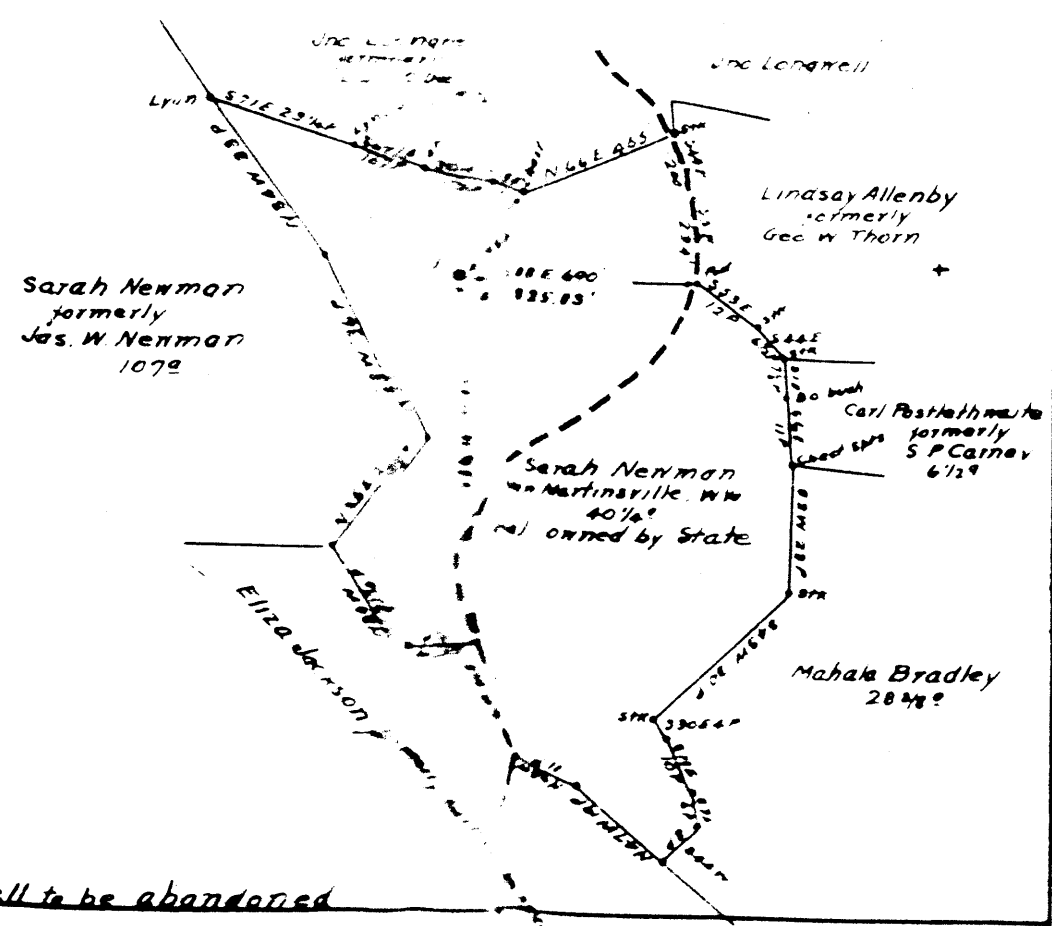
15' Quad _____
(sec.)

7.5' Quad Littleton

District Clay

WELL LOCATION PLAT

County 103 **Permit** 30209



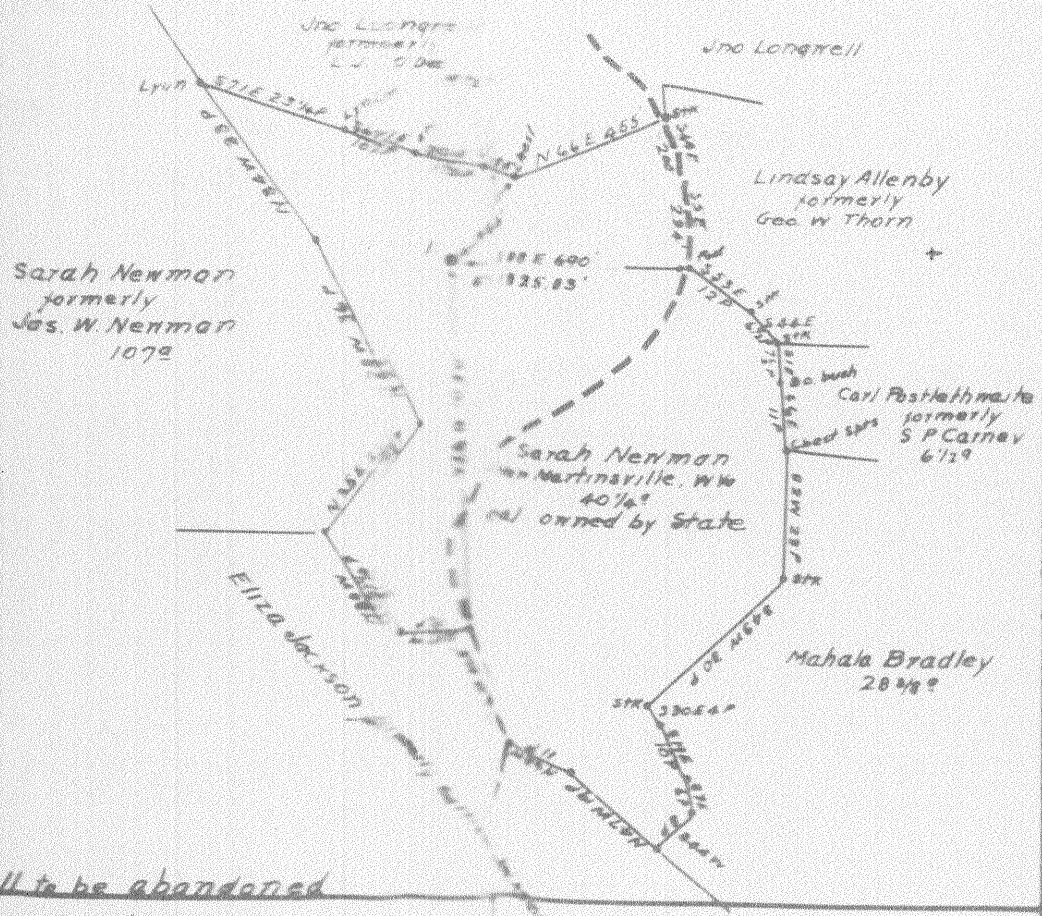
Well to be abandoned

Company South Penn Oil Co.
 Address 411-7th Ave. Pittsburgh, Pa.
 Farm S. Newman
 Tract - Acres 256 Lease No. 102
 Well (Farm) No. 11 Ser. No.
 Quadrangle Littleton
 County Wetzel

STATE OF WEST VIRGINIA
 DEPARTMENT OF MINES
 OIL AND GAS DIVISION
 CHARLESTON

WELL LOCATION MAP
 FILE NO. VET-209

30209



Well to be abandoned

Company South Penn Oil Co
 Address 41-7th Ave - Pittsburgh Pa
 Farm S. Newman
 Tract - Acres 250 Lease No. 452
 Well (Farm) No. 11 Serial No.
 Quadrangle Littleton
 County Wetzel

STATE OF WEST VIRGINIA
 DEPARTMENT OF MINES
 OIL AND GAS DIVISION
 CHARLESTON

WELL LOCATION MAP
 FILE NO. WET-209

WET-299-A

Clay District, Wetzel County, W. Va.

By South Penn Oil Co., Chamber of Commerce Bldg., Pittsburgh, Pa.

On 250 acres, surface owned by Sarah Newman, New Martinsville,
W. Va., and mineral rights by J. W. Newman, New Martinsville,
W. Va.

Elevation, 1325.83' L.

10' conductor; 10" casing, 300' 4"; 8 1/2", 1483'; 6-5/8", 2321';
5-3/16", 2738' (2713' pulled).

Coal was encountered at 954-957 and 1060-1067'.

Abandonment reported to Dept. of Mines Aug. 10, 1936.

Oil and gas well.

	Top.	Bottom.
Mapletown (Sewickley) Coal	954	- 957
Pittsburgh Coal	1060	- 1067
Big Dunkard Sand	1542	- 1600
Gas Sand	1840	- 1860
Salt Sand (gas, 2010')	2000	- 2105
Maxton Sand	2120	- 2144
Little Lime	2220	- 2230
Pencil Cave	2230	- 2245
Big Lime	2245	- 2300
Big Injun Sand (gas, 2310')	2300	- 2525
Wordon Stray Sand (small show oil, 3158')	3110	- 3160
Gordon Sand (first pay oil, 3165-3170')	3162	- 3173
Total depth		3189