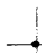


39°45'00"

Latitude

80°42' 30"

Longitude



2.77s

1.34w

Topo Location

7.5' Loc. _____ 15' Loc. _____
 _____ (calc.) _____

Company South Penn Oil Co

Farm HENRY GARNER 32

15' Quad _____
(sec.)

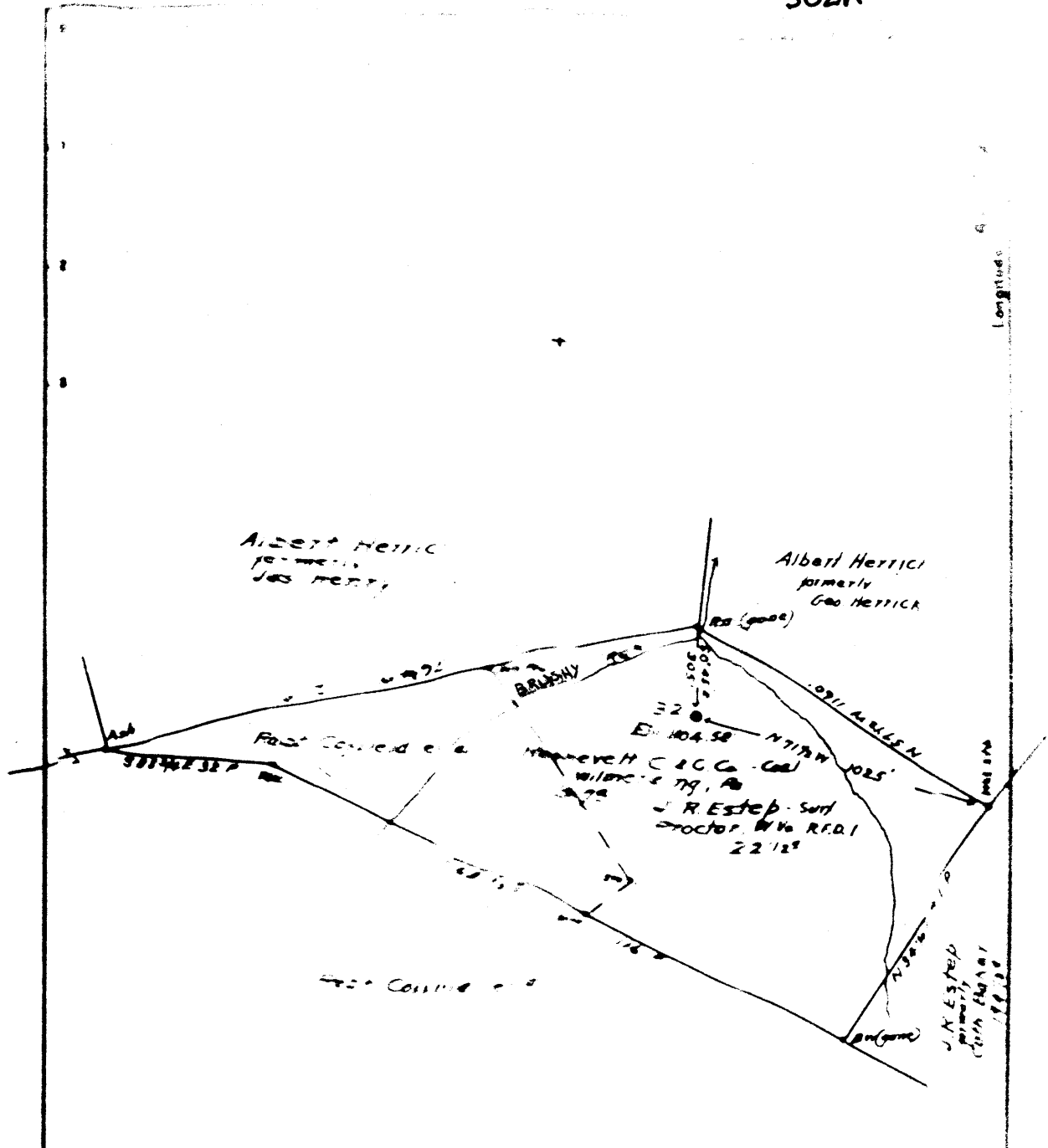
7.5' Quad Wileyville

District PROCTOR

WELL LOCATION PLAT

County 103 **Permit** 30211

Longitude



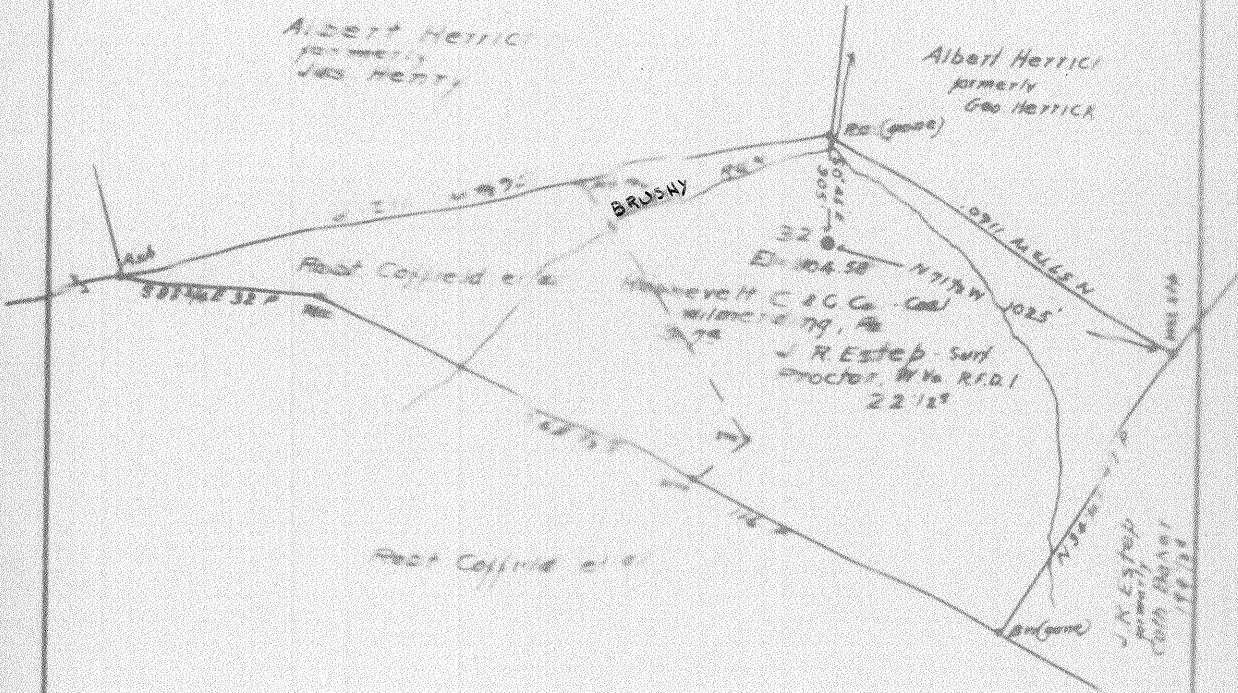
Well to be abandoned
 Company South Penn Co.
 Address 411 7th Ave
 Farm Henry Garter
 Locality Arcos 1482

STATE OF WEST VIRGINIA
 DEPARTMENT OF MINES
 OIL AND GAS DIVISION
 CHARLESTON

30211

Latitude 78

Longitude 80 40



Well to be abandoned

Company South Penn Oil Co.
 Address 411 7th Ave Pittsburgh Pa
 Farm Henry Garner
 Tract Acres 1486 Lease No. 21066

STATE OF WEST VIRGINIA
 DEPARTMENT OF MINES
 OIL AND GAS DIVISION
 CHARLESTON

Proctor District, Wetzel County, W. Va.

By South Penn Oil Co., Chamber of Commerce Bldg., Pittsburgh, Pa.

On 1496 acres, surface owned by J. H. Westop, R. F. D. No. 1,

Proctor, W. Va., and mineral rights by Henry Garner Heirs,

Waynes Hall, Proctor, W. Va.

Elevation, 1104.58' L.

10" casing, 1161' (pulled); 8 1/2", 1681' 8" (pulled); 6-5/8", 2275' 6".

Coal was encountered at 465-470, 725-727, and 815-821'.

Abandonment reported to Dept. of Mines Sept. 4, 1936.

Well was shot Apr. 25, 1901, with 40 qts.; Jan. 12, 1904, with 100

qts.; and Nov. 17, 1905, with 80 qts.

Oil well.

	Top.	Bottom.
Native coal (Waynesburg)	465	- 470
Mapletown (Sewickley) Coal	725	- 727
Pittsburgh Coal	815	- 821
Salt Sand	1560	- 1600
Big Line	1912	- 1965
Big Injun Sand	1965	- 2240
Stray Sand	2780	- 2795
Gordon Sand (oil)	2825	- 2835
Total depth		2837

lost - n/a