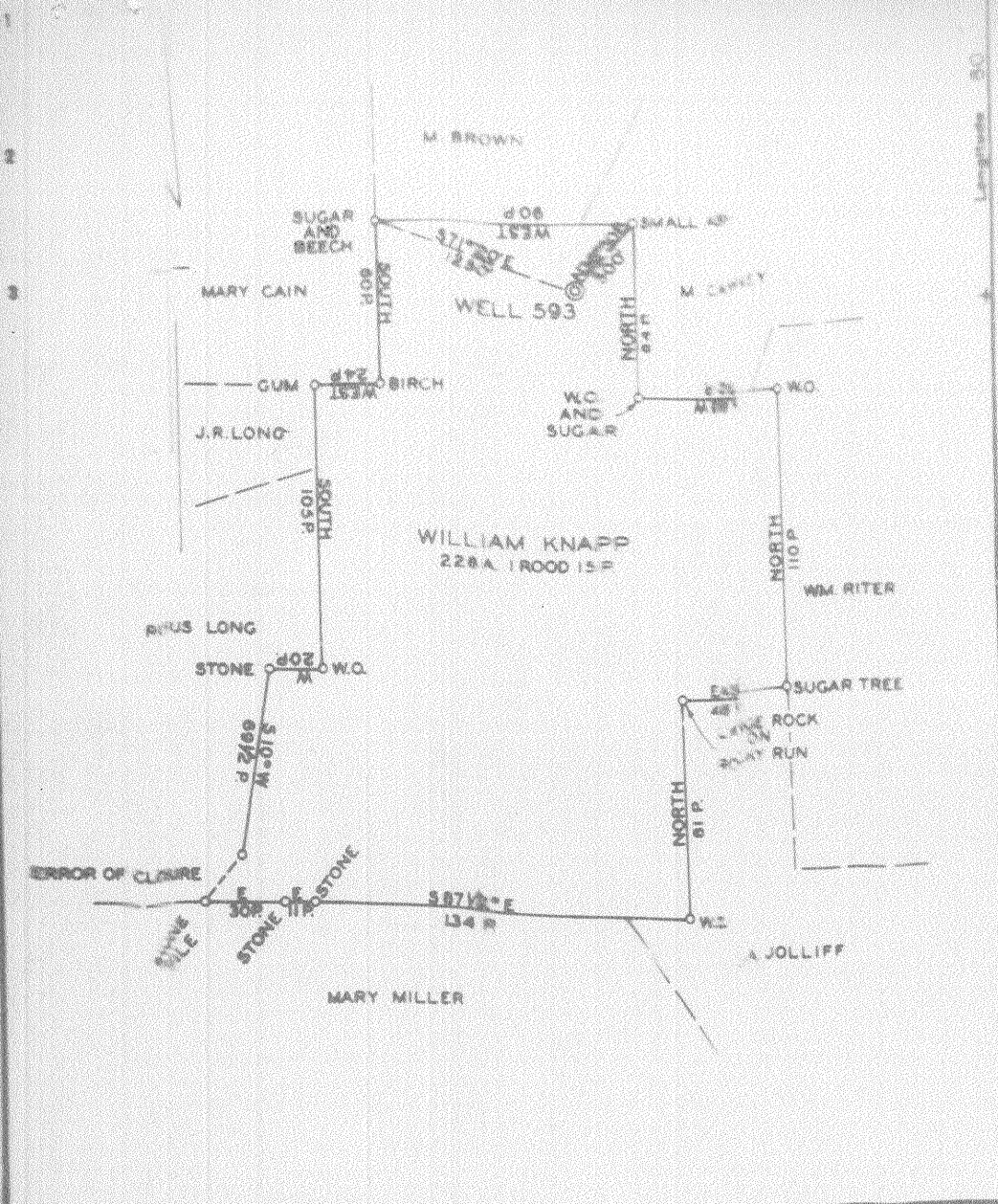


Company LENIX GASOLINE AND OIL CORP.  
 Address RILEY LAW BLDG. WHEELING, W. VA.  
 Farm WILLIAM KNAPP  
 Tract 228.34 Lease No. 4274  
 Well (Farm) to 2 Serial No. 593  
 Elevation (Sea Level) 1220  
 Quadrangle TILETON

STATE OF WEST VIRGINIA  
 DEPARTMENT OF MINES  
 OIL AND GAS DIVISION  
 CHARLESTON  
**WELL LOCATION MAP**  
 FILE NO. SEI-213

30213



Company UNION GASOLINE AND OIL CORP.  
 Address RILEY LAW BLDG., WHEELING, W. VA.  
 Farm WILLIAM KNAPP  
 Tract Acres 228.34 Lease No. 4274  
 Well (Farm) No. 2 Serial No. 593  
 Elevation (Spot Level) 1320±  
 Quadrangle TITLETON

STATE OF WEST VIRGINIA  
 DEPARTMENT OF MINES  
 OIL AND GAS DIVISION  
 CHARLESTON  
 WELL LOCATION MAP  
 FILE NO. WET-213

Center District, Wetzel County, W. Va.  
 By Union Gasoline & Oil Corp., 209 Riley Law Bldg., Wheeling, W. Va.  
 On 226 acres, surface owned by G. W. Knapp, Radlett, W. Va., and  
 minerals by Union Gasoline & Oil Corp., Wheeling, W. Va.  
 Drilled prior to June 1, 1923. AP-P-213-A  
 Elevation, 1320' L.  
 13 x 16 conductor; 10" casing, 309'; 8 1/2", 1624'; 11"; 6 3/4", 2321';  
 4" tubing, 2360'; 6"; 2" tubing, 3212' 11".  
 Coal was encountered at 785-790, 880-....? and 1107-1113'.  
 Abandonment reported to Dept. of Mines Oct. 19, 1936.  
 Oil well. Record to ROT from B. G. Courtney (Dept. of Mines) 5-5-37.  
 Hole reduced at 3171'.  
 147' 4" of 5 1/8" casing used for liner, in 1 section.  
 152 lbs. 2" tubing.  
 Drilled deeper (from 2347') Oct. 2, 1924.

	Top.	Bottom.	Thickness.
Clay (4 boilers water per hour)	0	10	10
Fairview (Waynesburg) Coal	785	790	5
Mapletown (Sewickley) Coal	880	....?	...?
<del>Highlandville</del>			
Mapletown (Sewickley) Coal	1009	1014	5
Pittsburgh Coal	1107	1113	6
Little Dunkard Sand	1502	1536	34
Big Dunkard Sand	1597	1660	63
Gas Sand	1730	1765	35
2nd Salt Sand (1 boiler water per hour at 2000-2030')	1966	2030	64
Little Limestone	2250	2270	20
Pencil Core	2270	2275	5
Big Limestone	2275	2317	42
Big Injun Sand (gas, 2336-2346')	2317		
Total depth		2347	

DRILLED DEEPER Oct. 2, 1924:

Big Injun Sand	2347	2575	228
Red rock	3015	3030	15
30-Ft. Sand	3110	3138	28
Garden Sand (oil at 3174-3178')	3169	3188	19
Total depth		3188	

N.F. 841