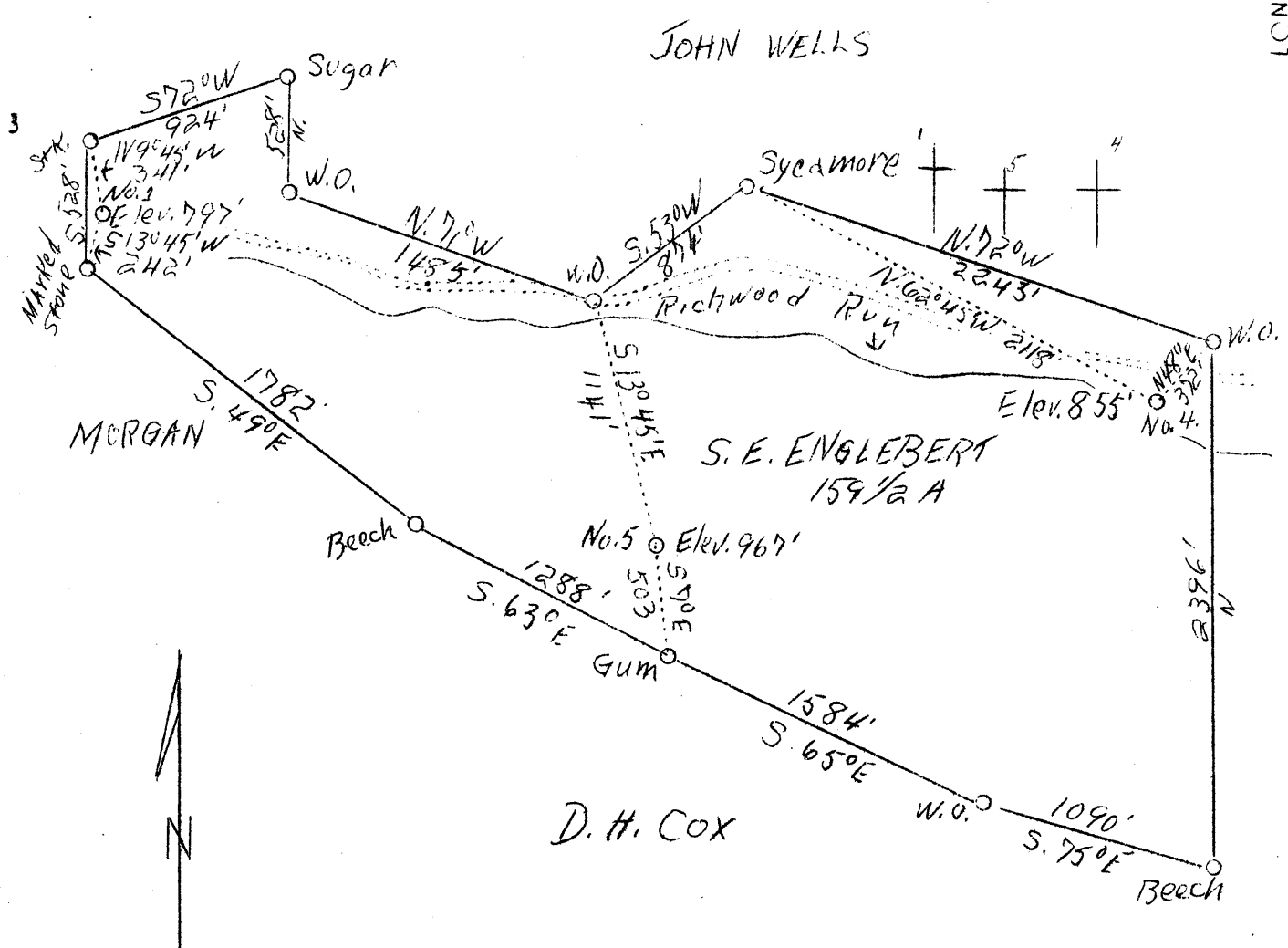


LATITUDE 39° 35'

LONGITUDE 80° 35'



ABD

3.4 S } 1
 2.1 W }
 3.5 S } 4
 1.2 W }
 3.5 S } 5
 1.7 W }

Company F.S. Deem
 Address Harrisville, W.Va.
 Farm S.E. Englebert
 Tract Acres 159½ Lease No.
 Well (Farm) No. 1, 4 & 5 Serial No.
 Elevation (Spirit Level) 797, 855 & 967
 Quadrangle Littleton SC,
 County Wetzel District Grant
 Engineer B.F. Rinehart
 Engineer's Registration No. 648
 File No. Drawing No. 156-G-R
 Date Apr. 18, 1938 Scale 1"=8

STATE OF WEST VIRGINIA
 Department of Mines
 OIL AND GAS DIVISION
 CHARLESTON

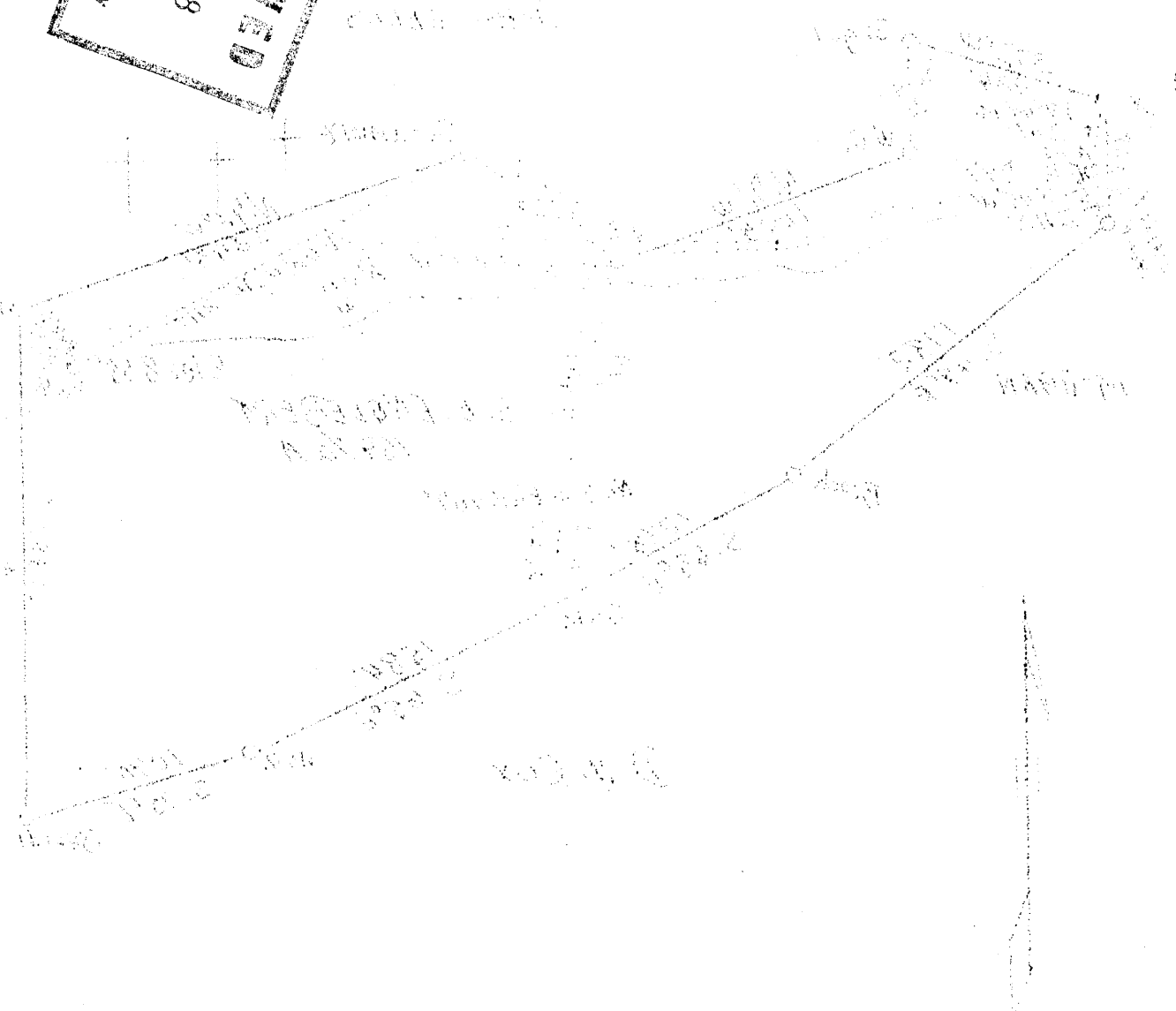
WELL LOCATION MAP

File No. Wet-262-263-264-A

Denotes location of well on United States Topographic Maps, scale 1 to 62,500, latitude and longitude lines being represented by border lines as shown.

Denotes one inch spaces on border line of original tracing.

RECEIVED
APR 25 1938
STATIONING SERVICE



TRAVELING TO THE SOUTH
 FROM THE POINT OF
 INTERSECTION OF THE
 SECTION LINE WITH
 THE EAST LINE OF
 SECTION 16, T. 12 N.,
 R. 10 W., S. 14 E.,
 TO THE POINT OF
 INTERSECTION OF THE
 SECTION LINE WITH
 THE WEST LINE OF
 SECTION 16, T. 12 N.,
 R. 10 W., S. 14 E.,
 BEARING S 100° 15' 00\"/>

TO THE POINT OF
 INTERSECTION OF THE
 SECTION LINE WITH
 THE EAST LINE OF
 SECTION 16, T. 12 N.,
 R. 10 W., S. 14 E.,
 BEARING S 100° 15' 00\"/>

Grant District, Wetzel County, W. Va.

By F. S. Deem, Harrieville, W. Va.

Abandoned under permit Wet-262, issued Apr. 25, 1938 (April report).

SMITH FLAT.

Located 2.12 mi. W. of 80° 35' and 3.4 mi. S. of 39° 35' - SG -
Littleton Quadrangle.

On 159½ acres.

Elevation, 797' L.

Near head of Richwood Run.

Flat from Smith April 25, 1938.

On 159½ acres, on Fishing Creek.

Elevation, 797' L.

Date of completion.....?

10" casing, 240'; 8½", 1120'; 6½", 1400'; 5½", 1960'; all left in.

Oil well.

Abandonment reported to Dept. of Mines (not dated); filed Apr. 20, 1938.

Record to RGT from Mrs. Griffith Sept. 16, 1938.

Gordon Sand

Top. Bottom.
2600 - 2644