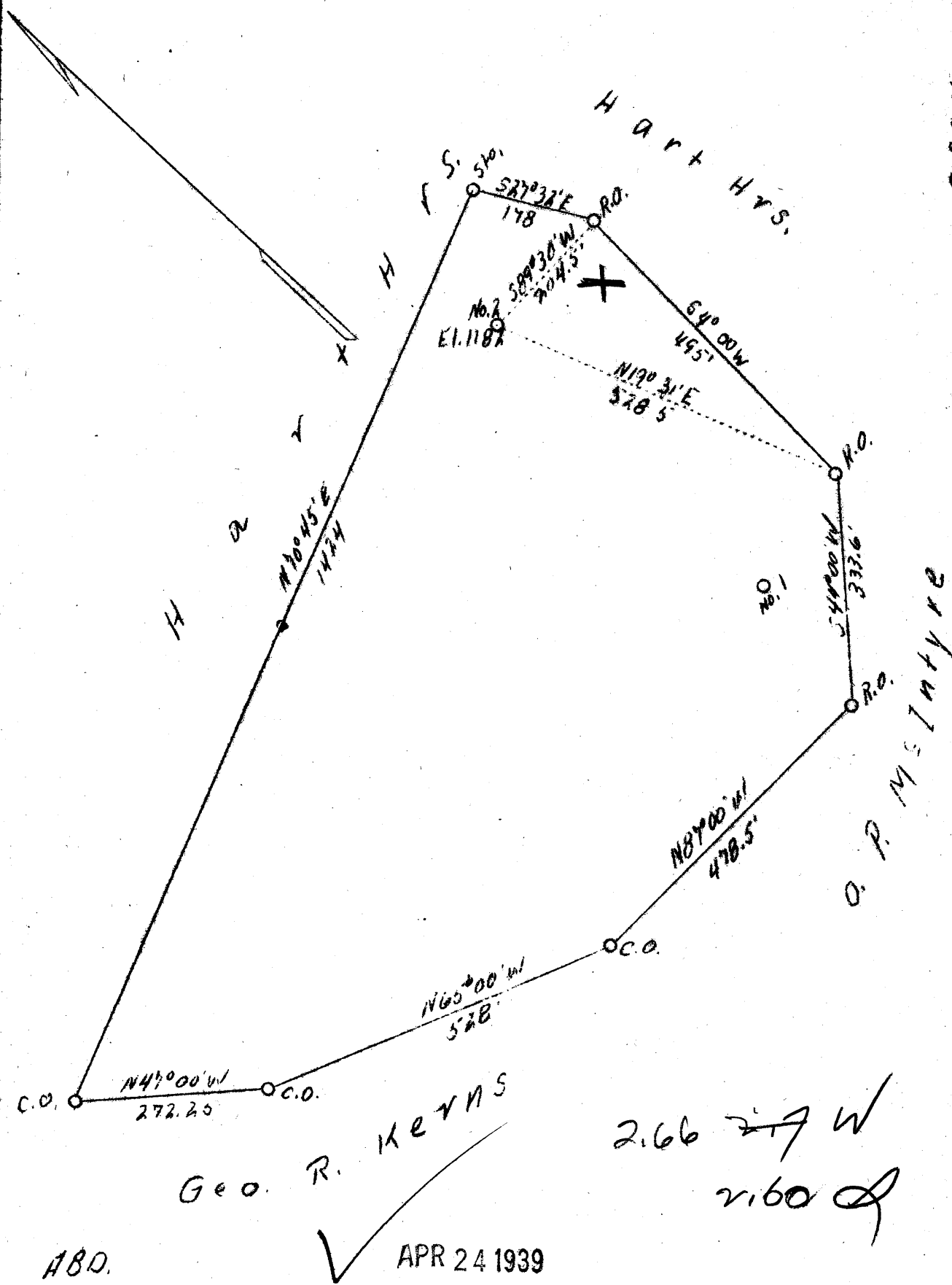


LATITUDE 39° 30'

LONGITUDE 80° 35'



Company George R. Kerns
 Address Dale, W. Va.
 Farm Joab McIntyre
 Tract 1
 Acres 20
 Well (Farm) No. 2
 Quadrangle Centerpoint
 County 5 Wetzel
 District Grant
 Eng. Geo. L. McIntyre
 Date 3/30/39
 Scale 1" = 200'

HC

STATE OF WEST VIRGINIA
 Department of Mines
 OIL AND GAS DIVISION
 Charleston

WELL LOCATION MAP
 File No. WV-293-A

x Denotes location of well on U.S. Topographic Maps, scale 1 to 62,500, latitude and longitude lines being represented by border lines as shown.