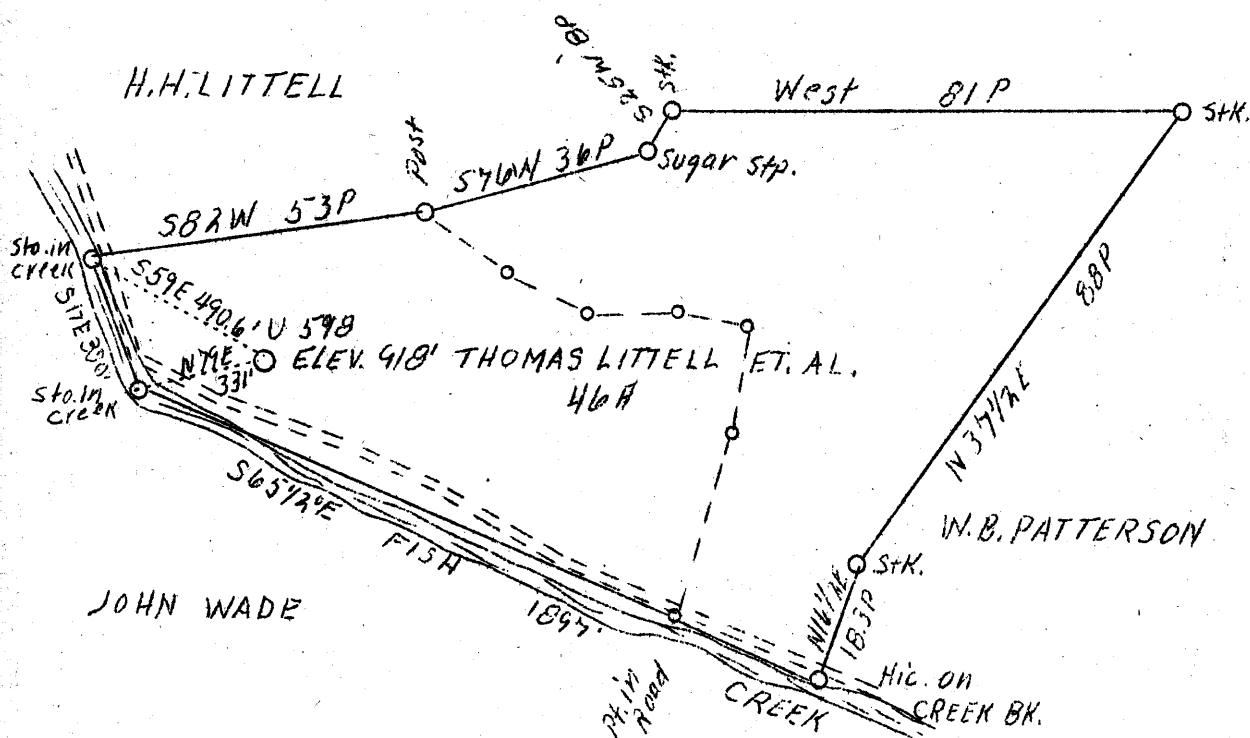


LATITUDE 39° 45'

LONGITUDE 80° 30'



THOMAS LITTELL



COAL OWNED BY BERTHA COAL CO.  
OIL WELL ABN'D.

3.92 W  
2.8 A

✓ MAY - 1 1939

Company	Union Gasoline & Oil Corp.
Address	209 Riley Law Bldg. Wheeling, W.Va.
Farm	Thomas Littel et al
Acres	46
Lease No.	5754
Serial No.	U - 598
Well (Farm) No.	1
El. (S. L.)	918
Quadrangle	Littleton N.E.
County	Wetzel
District	<del>Blay</del> Center
Eng.	J.C. Mercer
Drawing No.	Y - 8 - 262
Date	4/17/39
Scale	1" = 500'



STATE OF WEST VIRGINIA  
Department of Mines  
OIL AND GAS DIVISION  
Charleston

WELL LOCATION MAP

File No. Wet-795-A

x Denotes location of well on U.S. Topographic Maps, scale 1 to 62,500, latitude and longitude lines being represented by border lines as shown.

• Denotes one inch spaces on border line of original tracing.

WEST VIRGINIA DEPARTMENT OF MINES  
OIL AND GAS DIVISION

766

WELL RECORD

AP 295-A  
Permit No. \_\_\_\_\_

Oil or Gas Well Oil  
(Kind)

Company Union Gasoline & Oil Corp.  
Address 209 Riley Law Bldg., Wheeling, W. Va.  
Farm Thomas Littell Acres 50  
Location (waters) \_\_\_\_\_  
Well No. 1 - 598 Elev. 918'  
District Clay County Wetzel  
The surface of tract is owned in fee by Thomas Littell  
Address Littleton, WVa.  
Mineral rights are owned by Union Gasoline & Oil Corp.  
209 Riley Law Bldg. Address Wheeling, W. Va.  
Drilling commenced Oct. 21, 1922  
Drilling completed Dec. 16, 1922  
Date shot \_\_\_\_\_ Depth of shot Gordon Sand  
2810 - 2818  
Open Flow /10ths Water in \_\_\_\_\_ Inch  
/10ths Merc. in \_\_\_\_\_ Inch  
Volume \_\_\_\_\_ Cu. Ft.  
Rock Pressure \_\_\_\_\_ lbs. \_\_\_\_\_ hrs.  
Oil \_\_\_\_\_ bbls., 1st 24 hrs.  
Fresh water \_\_\_\_\_ feet \_\_\_\_\_ feet  
Salt water \_\_\_\_\_ feet \_\_\_\_\_ feet

Casing and Tubing	Used in Drilling	Left in Well	Packers
Size			
16.			Kind of Packer
13.			
10.	<u>262</u>		Size of
8 3/4.	<u>1256</u>		
6 5/8.	<u>1970</u>	<u>1970</u>	Depth set
5 3/16.			
3.			Perf. top
2.			Perf. bottom
Liners Used			Perf. top
			Perf. bottom

CASING CEMENTED \_\_\_\_\_ SIZE \_\_\_\_\_ No. FT. \_\_\_\_\_ Date \_\_\_\_\_  
COAL WAS ENCOUNTERED AT 128 FEET 48 INCHES  
612 FEET 48 INCHES 748 FEET 72 INCHES  
\_\_\_\_\_ FEET \_\_\_\_\_ INCHES \_\_\_\_\_ FEET \_\_\_\_\_ INCHES

Formation	Color	Hard or Soft	Top	Bottom	Oil Gas or Water	Depth Found	Remarks
Clay			0	20			
Sand			160	225			
Red Rock			250	260			
Bluff Sand			400	428			
Fairview Coal			428	432			
Mapletown Coal			612	616			
Pittsburgh Coal			748	754			
Red Rock			810	900			
Red Rock			1000	1010			
Red Rock			1130	1148			
Little Dunkard			1148	1210			
Gas Sand			1136	1166			
First Salt Sand			1536	1560			
Second Salt Sand			1620	1675			
Red Rock			1815	1860			
1/2 Pencil Cave			1910	1920			
Big Lime			1920	1966			
Big Injun			1966	2212			
Red Rock			2675	2685			
Slate & Shells			2685	2760			
Sand			2760	2770			
Gordon Sand			2804	2832			
Fourth Sand			2815	2860			
Fifth Sand			2960	2970			
Slate & Shells			2970	3112			
Total depth				3112			

Show of oil 2813-2815  
Filled up to 2832

Formation	Color	Hard or Soft	Top	Bottom	Oil, Gas or Water	Depth Found	Remarks

Date April, 1939

APPROVED UNION GASOLINE & OIL CORPORATION, Owner

By J. Wallace (Title) Supt.