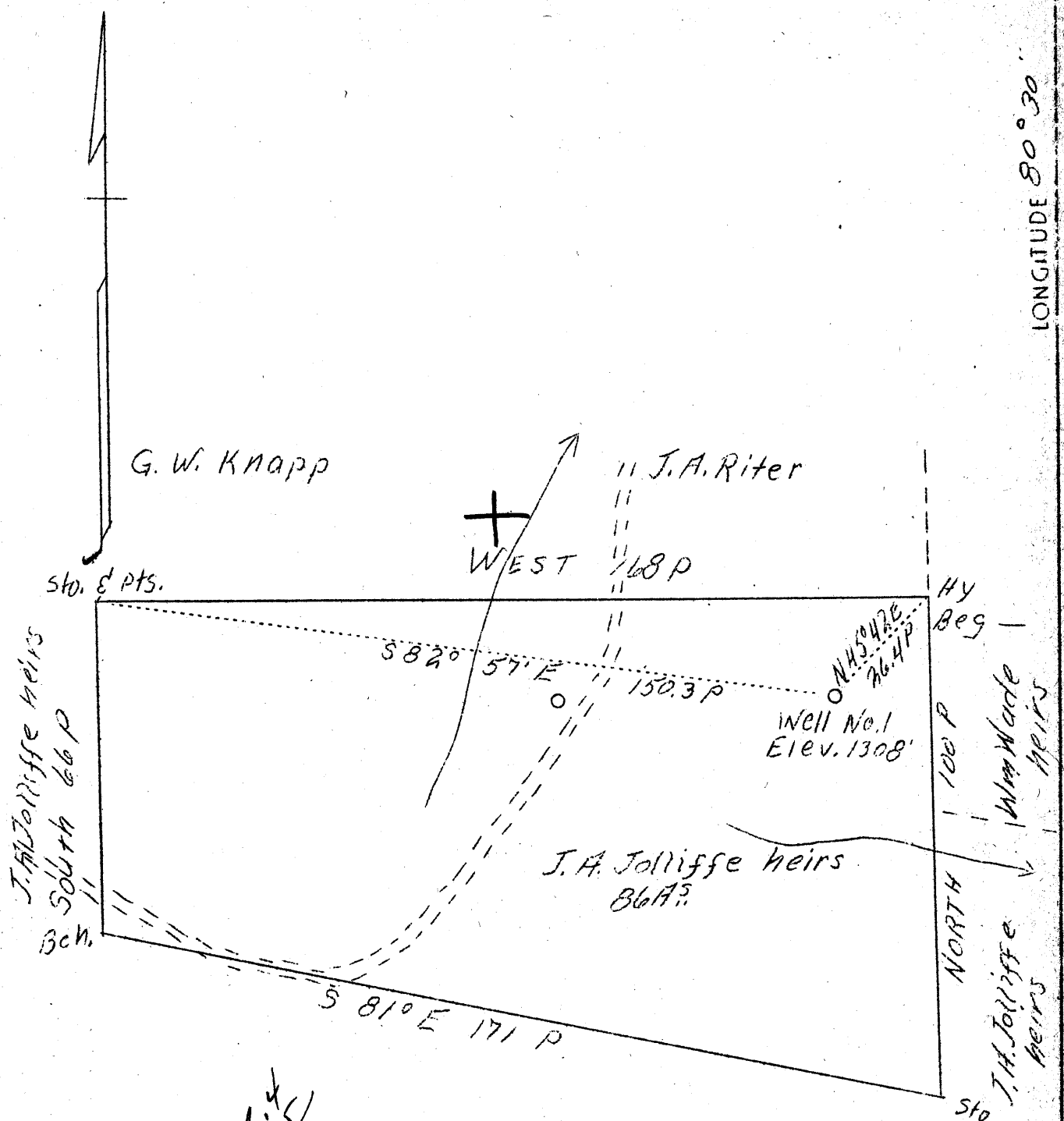


LATITUDE 39° 45'

LONGITUDE 80° 30'



$$\begin{array}{r} 76.4 \\ 16.5 \\ \hline 132.9 \\ 15.2 \\ \hline 285.1 \\ 435.60 \end{array}$$

Dan Henderson

✓ MAY 23 1939

3.72 3.77 W  
 3.91 3.99 Q

Company	Jacob Morris
Address	Gibsonia Pa.
Farm	J.A. Jolliffe heirs
Tract	1
Acres	86
Well (Farm) No.	1
Serial No.	257
El. (S.L.)	1308
Quadrangle	Littleton
County	Wetzel
District	Center
Eng.	A.L. Headley
Date	4/17/39
Scale	1" = 500'

NE

STATE OF WEST VIRGINIA  
Department of Mines  
OIL AND GAS DIVISION  
Charleston

WELL LOCATION MAP  
File No. Wet-296-A

x Denotes location of well on U.S. Topographic Maps, scale 1 to 62,500, latitude and longitude lines being represented by border lines as shown.

- Denotes one inch spaces on border line of original tracing.