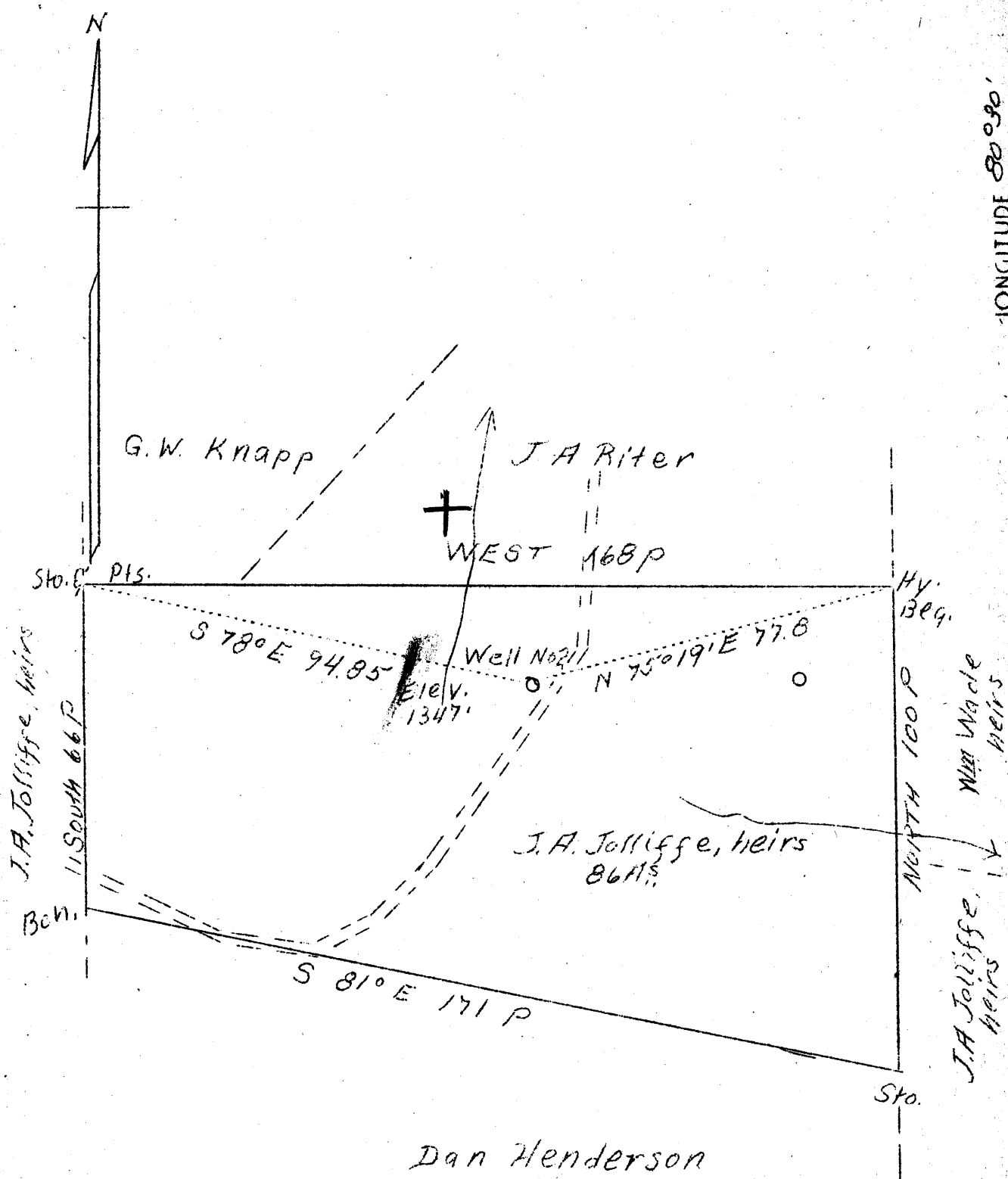


LATITUDE 39° 45'

LONGITUDE 80° 30'



no well shown
 on prop map M-12 - Equit Res
 MAY 23 1939

3.89 7796 W
 3.90 7795 R

NE

Company Jacob Morris
 Address Gibsonia Penna.
 Farm J.A. Jolliffe heirs
 Tract 1
 Acres 86
 Well (Farm) No. 2
 Serial No. 258
 El. (S.L.) 1347
 Quadrangle Littleton
 County Wetzel
 District Center
 Eng. A.L. Headley
 Date 4/17.39
 Scale 1" - 500'

STATE OF WEST VIRGINIA
 Department of Mines
 OIL AND GAS DIVISION
 Charleston

WELL LOCATION MAP
 File No. Wpt-297-A

x Denotes location of well on U.S. Topographic Maps, scale 1 to 62,500, latitude and longitude lines being represented by border lines as shown.

- Denotes one inch spaces on border line of original tracing.