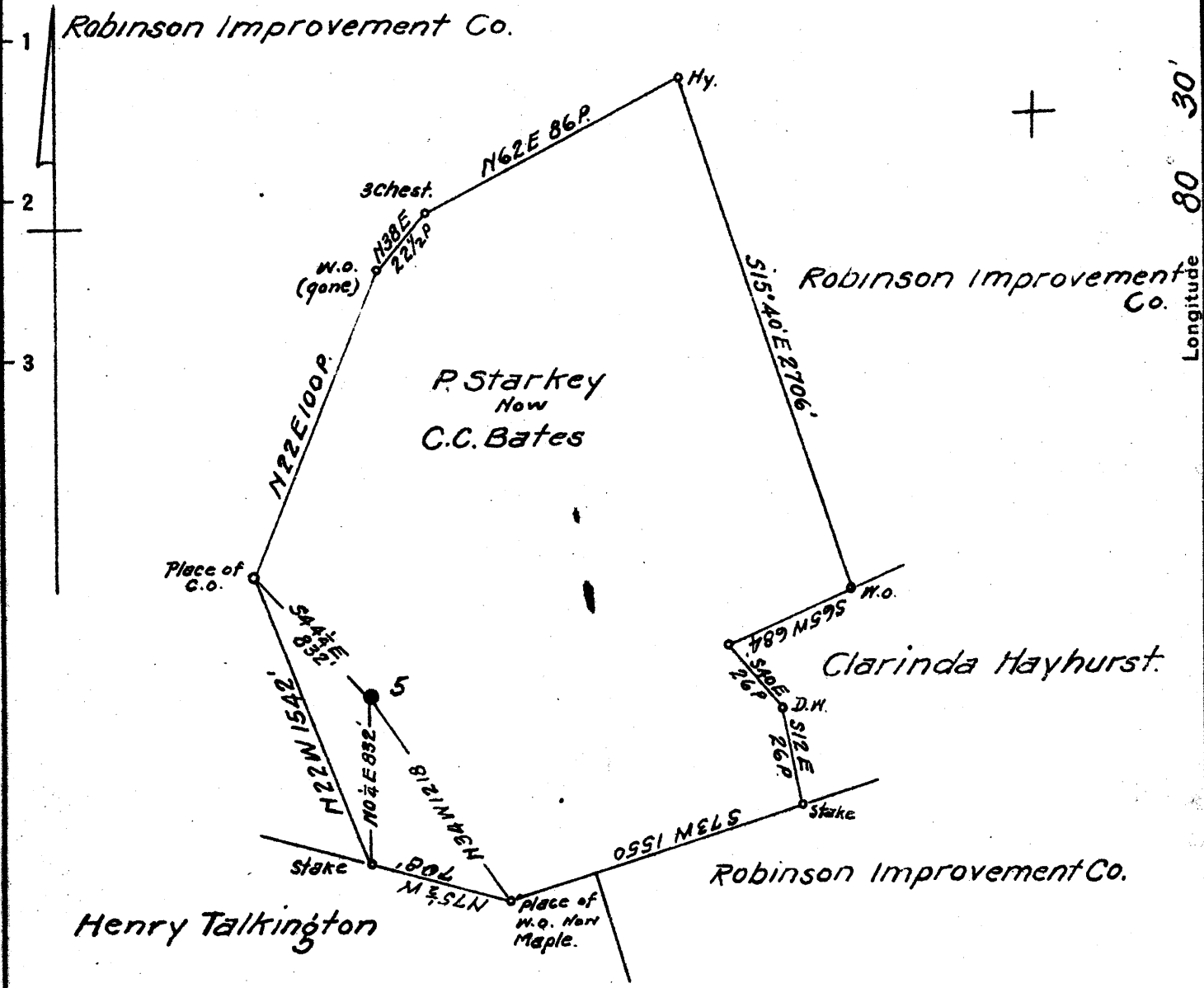


Latitude 39° 30'

Longitude 80° 30'



Coal: Robinson Improvement Co.  
The Plains, Va.

Surface: C.C. Bates  
Folsom, W. Va.

106 109 W  
162 164

AUG 12 1941

N2-3 E6 Map N49

New Location   
Drill Deeper   
Abandonment

Company South Penn Natural Gas Co.

Address Parkersburg, W. Va.

Farm P. Starkey

Tract \_\_\_\_\_ Acres 150 Lease No. 46775

Well (Farm) No. 5 Serial No. \_\_\_\_\_

Elevation (Spirit Level) 1338.00

Quadrangle Centerpoint

County Wetzel District Grant

Engineer Emmon Haines

Engineer's Registration No. \_\_\_\_\_

File No. \_\_\_\_\_ Drawing No. \_\_\_\_\_

Date May 28, 1941 Scale 1" = 800'

STATE OF WEST VIRGINIA  
DEPARTMENT OF MINES  
OIL AND GAS DIVISION  
CHARLESTON

WELL LOCATION MAP  
FILE NO. WET-367A

+ Denotes location of well on United States Topographic Maps, scale 1 to 62,500, latitude and longitude lines being represented by border lines as shown.

- Denotes one inch spaces on border line of original tracing.

P. STARKEY No. 5 - SOUTH PENN NAT. GAS CO. - WET-367-A

STATE OF WEST VIRGINIA  
DEPARTMENT OF MINES  
OIL AND GAS DIVISION

857

WELL RECORD

Permit No. 47-A

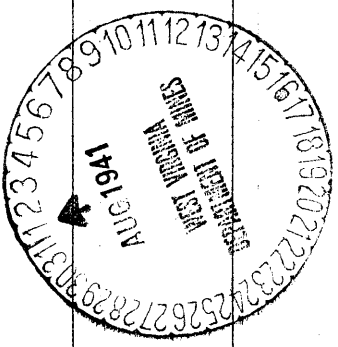
Oil or Gas Well **OIL**  
(Kind)

Company **South Penn Natural Gas Company,**  
Address **Union Trust Bldg. Parkersburg, W. Va.**  
Farm **W. P. Starkey** Acres **150**  
Location (waters) \_\_\_\_\_  
Well No. **5** Elev. **1338'**  
District **Grant** County **Wetzel**  
The surface of tract is owned in fee by **C. C. Bates**  
Address **Folsom, W. Va.**  
Mineral rights are owned by **Lafayette Starkey et al**  
**R #2,** Address **Smithfield, W. Va.**  
Drilling commenced **April 29, 1903**  
Drilling completed **June 27, 1903**  
Date shot **Feb: 1-1913, 30 84** Depth of shot \_\_\_\_\_  
**July 16-1916 20 0t**  
Open Flow /10ths Water in \_\_\_\_\_ Inch  
/10ths Merc. in \_\_\_\_\_ Inch  
Volume \_\_\_\_\_ Cu. Ft.  
Rock Pressure \_\_\_\_\_ lbs. \_\_\_\_\_ hrs.  
Oil **115** \_\_\_\_\_ bbls., 1st 24 hrs.  
Fresh water \_\_\_\_\_ feet \_\_\_\_\_ feet  
Salt water \_\_\_\_\_ feet \_\_\_\_\_ feet

Casing and Tubing	Used in Drilling	Left in Well	Packers
Size			
16			Kind of Packer -
13			-
10	<b>350' (Pulled)</b>		Size of -
8 1/4	<b>1603'</b>		-
6%	<b>2560'</b>		Depth set -
5 3/16			-
3			Perf. top -
2			Perf. bottom -
Liners Used			Perf. top -
			Perf. bottom -

CASING CEMENTED - SIZE - No. Ft. - Date  
COAL WAS ENCOUNTERED AT **1166** FEET **84** INCHES  
- FEET - INCHES - FEET - INCHES  
- FEET - INCHES - FEET - INCHES

Formation	Color	Hard or Soft	Top	Bottom	Oil, Gas or Water	Depth Found	Remarks
Pittsburgh Coal			1166	1173			
Big Dunkard Sand			1655	1700			
Salt Sand			2030	2165			
Pencil Cave			2360	2370			
Big Lime			2370	2440			
Big Injun Sand			2440	2540			
Fifty Foot Sand			3020	3040			
Thirty Foot Sand			3115	3140			
Stray Sand			3195	3248			
Gordon Sand			3257		Gas Show Oil	3215-3226 3242	
					Oil	3265	
Total Depth				3277			



Formation	Color	Hard or Soft	Top	Bottom	Oil, Gas or Water	Depth Found	Remarks

Date **July 31,** 19 **41**

APPROVED **SOUTH PENN NATURAL GAS COMPANY,** Owner

By *Elton E. Lang* Land Agent.

(Title)