

Latitude

+ .325
1.16w

Longitude

Topo Location

7.5' Loc. _____ 15' Loc. _____
_____ (calc.) _____

Company Manufact H&H

Farm Priscilla Barger #1-2896

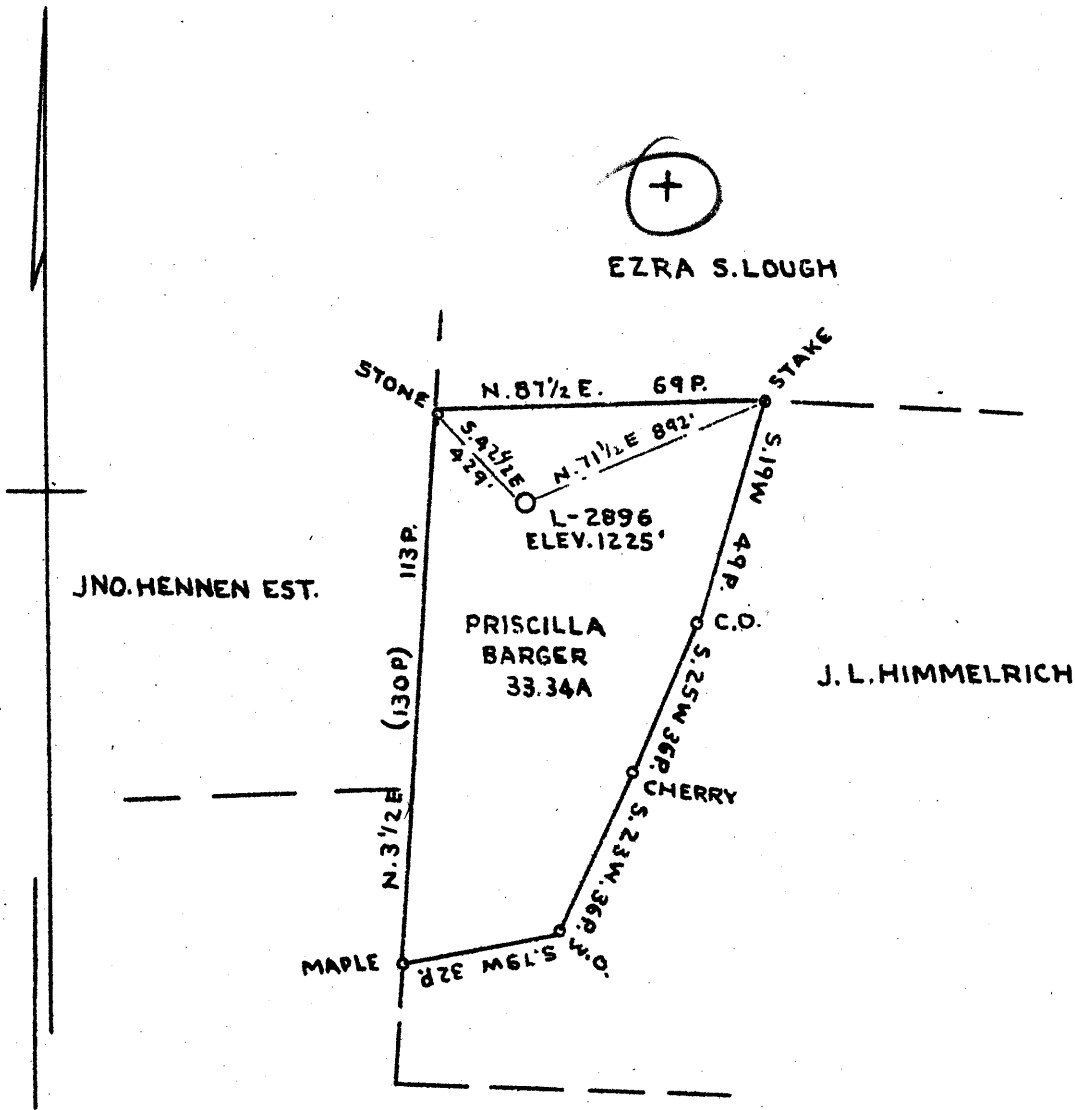
15' Quad _____
(sec.)

7.5' Quad _____

District Clay

WELL LOCATION PLAT

County 103 Permit 30424



COAL OWNED BY T. L. ROGERSON AND EVERETT F. MOORE

336 3.4 W
 319 3.23 Q

✓ SEP 28 1942

New Location ::
 Drill Deeper.....
 Abandonment.....

Company THE MANUFACTURERS LIGHT AND HEAT CO.
 Address 800 UNION TRUST BLD'G. PITTSBURGH PA.
 Farm PRISCILLA BARGER
 Tract Acres 33.34 Lease No. 8705
 Well (Farm) No. L Serial No. 2896
 Elevation (Spirit Level) 1225'
 Quadrangle MANNINGTON N.W. 1/4
 County WETZEL District CLAY
 Engineer J. L. Himmelrich
 Engineer's Registration No. _____
 File No. INV.E.B. 14 R. 29 Drawing No. Y-10-790
 Date SEPTEMBER 9-1942 Scale 1" = 660'

STATE OF WEST VIRGINIA
 DEPARTMENT OF MINES
 OIL AND GAS DIVISION
 CHARLESTON

WELL LOCATION MAP

File No. WET-424-A

— Denotes location of well on United States Topographic Maps, scale 1 to 62,500, latitude and longitude lines being represented by border lines as shown.

--- Denotes one inch spaces on border line of original tracing.

NW

STATE OF WEST VIRGINIA
DEPARTMENT OF MINES
OIL AND GAS DIVISION

887

WELL RECORD

Permit No. Drilled in 1924

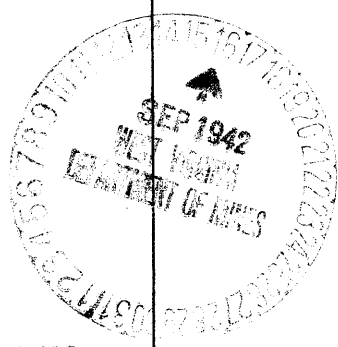
Oil or Gas Well Gas
(KIND)

Company The Manufacturers Light & Heat Co.
Address 800 Union Trust Bldg., Pittsburgh, Pa.
Farm Priscilla Barger Acres 33.34
Location (waters).....
Well No. 1 - 2896 Elev. 1225 ft
District Clay County Netzel
The surface of tract is owned in fee by Sarah E. Kerr
Address Ned, Pa.
Mineral rights are owned by The Mfrs Light & Heat Co.
800 Union Trust Bldg. Address Pittsburgh, Pa.
Drilling commenced Jan. 4, 1924
Drilling completed Mar. 15, 1924
Date Shot From To
With
Open Flow /10ths Water in Inch
/10ths Merc. in Inch
Volume Cu. Ft.
Rock Pressure 123 lbs 1 hrs.
Oil bbls., 1st 24 hrs.
Fresh water feet feet
Salt water feet feet

Casing and Tubing	Used in Drilling	Left in Well	Packers
Size			Kind of Packer
16.			
13.			
10.	262'		Size of
8 3/4	1439'		
6 5/8	2184' 1"	2184' 1"	Depth set
5 3/16			
3.			Perf. top
2.			Perf. bottom
Liners Used			Perf. top
			Perf. bottom

CASING CEMENTED SIZE No. Ft. Date
COAL WAS ENCOUNTERED AT 600 FEET 60 INCHES
806 FEET 72 INCHES 936 FEET 96 INCHES
FEET INCHES FEET INCHES

Formation	Color	Hard or Soft	Top	Bottom	Oil, Gas or Water	Depth Found	Remarks
Clay			0	12			
Sand			12	65			
Red Rock			65	85			
Lime & Slate			85	135			
Sand			135	155			
Red Rock			155	180			
Lime			180	210			
Slate & Shells			210	325			
Sandy Lime			325	400			
Slate			400	460			
Coal			460	465			
Lime			465	515			
Slate			515	545			
Lime			545	600			
Native Coal							
Native Coal			600	605			
Limestone			605	806			
Mapletown Coal			806	812	Show of gas		
Lime			812	936			
Pittsburgh Coal			936	944	Gas		
Lime			944	970			
Slate & Shells			985	1034			
Murphy Sand			1034	1068			
Red Rock			1068	1079			
Lime & Slate			1079	1160			
Slate, Shells, Lime			1160	1200			
Red Rock			1200	1220			
Lime, Slate, Shells			1220	1345			
Little Dunkard			1345	1370			
Red Rock			1370	1390			
Lime & Slate			1390	1433			
Big Dunkard			1433	1458			
Lime & Slate			1458	1605			
Gas Sand			1605	1648			
Slate & Shells			1648	1698			
1st Salt Sand			1698	1755	Show of gas at 1728		
Slate			1755	1765			
2nd Salt Sand			1765	1811			
Slate & Shells			1811	1916			
3rd Salt Sand			1916	1970	Show of oil at 1931		
Red Rock			1970	2080			



Formation	Color	Hard or Soft	Top	Bottom	Oil, Gas or Water	Depth Found	Remarks
Slate			2080	2095			
Little Lime			2095	2105			
Pencil Cave			2105	2126			
Big Lime			2126	2173			
Big Injun			2173	2415			
Slate			2415	2425			
Squaw Sand			2425	2460			
Slate, Shells, Lime			2460	2760			
Gantz Sand			2760	2781			
Slate & Shells			2781	2919			
50-Foot Sand			2919	2928	Show of gas	2922	
Slate			2928	2944			
30-Foot Sand			2944	2956			
Shelly			2956	2992			
Gordon Stray			2992	3017			
Slate			3017	3033			
Gordon Sand			3033	3053	Gas at 3043	to 3045 to	3048
Total depth				3069			

Date September 15th, 1942

APPROVED THE MANUFACTURERS LIGHT & HEAT CO., Owner

By Harry H. Fowler
 Land Dept. (Title) Office Mgr.