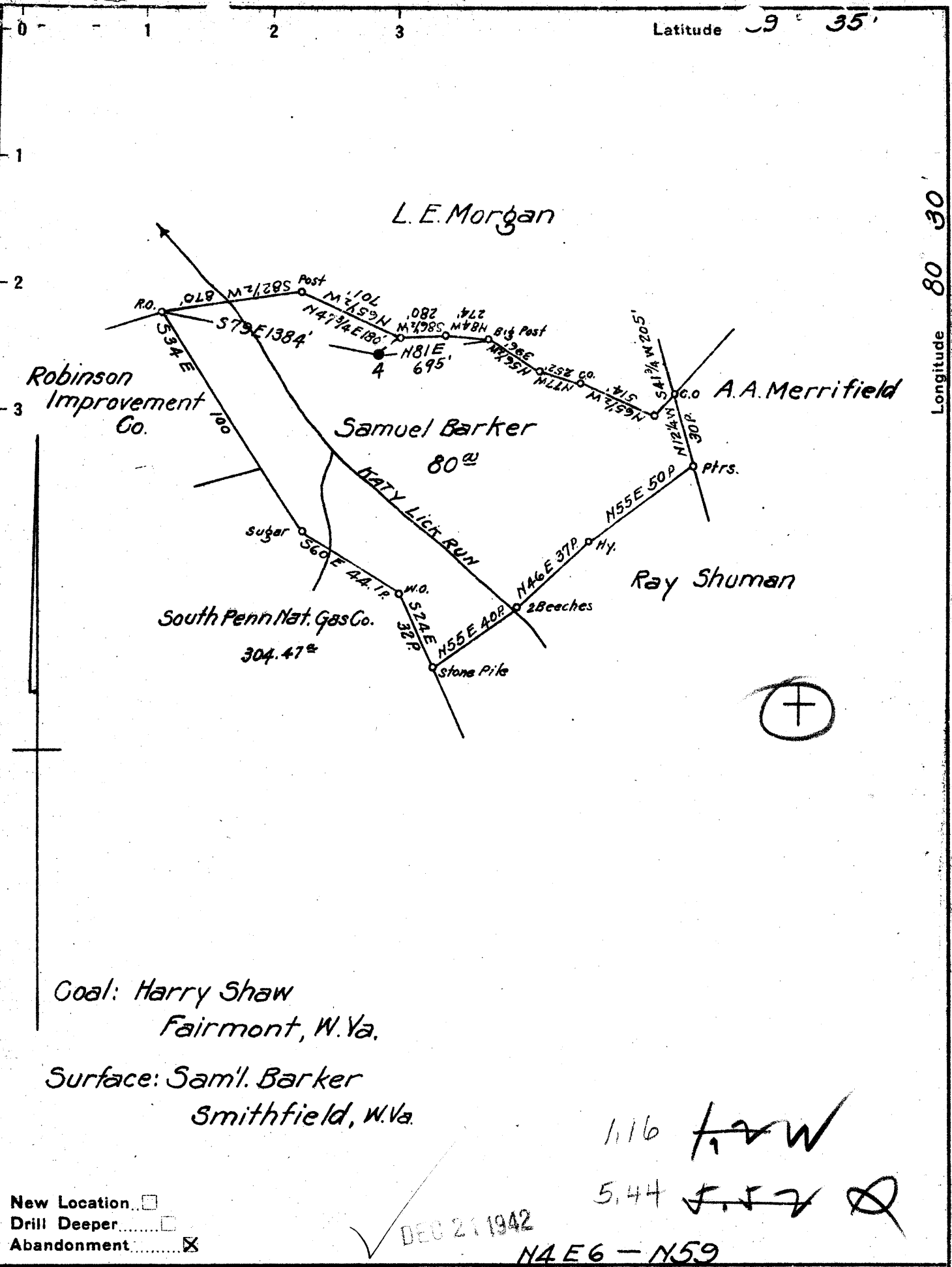


Latitude 39° 35'

Longitude 80° 30'



New Location   
 Drill Deeper   
 Abandonment

DEC 21 1942

N4E6 - N59

Company South Penn Natural Gas Co.  
 Address Parkersburg, W. Va.  
 Farm Samuel Barker  
 Tract \_\_\_\_\_ Acres 80 Lease No. 52789  
 Well (Farm) No. 4 Serial No. \_\_\_\_\_  
 Elevation (Spirit Level) 1136.71  
 Quadrangle Littleton  
 County Wetzel District Grant  
 Engineer E.C. Tabler  
 Engineer's Registration No. \_\_\_\_\_  
 File No. \_\_\_\_\_ Drawing No. \_\_\_\_\_  
 Date Feb. 28, 1942 Scale 1" = 800'

STATE OF WEST VIRGINIA  
 DEPARTMENT OF MINES  
 OIL AND GAS DIVISION  
 CHARLESTON

WELL LOCATION MAP  
 FILE NO. WET-433-A

+ Denotes location of well on United States Topographic Maps, scale 1 to 62,500, latitude and longitude lines being represented by border lines as shown.  
 - Denotes one inch spaces on border line of original tracing.

SAMUEL BARKER NO. 4 - SOUTH PENN N. G. CO. - WET-433-A

STATE OF WEST VIRGINIA  
DEPARTMENT OF MINES  
OIL AND GAS DIVISION

888

WELL RECORD

OIL

Permit No. 433-12

Oil or Gas Well (KIND)

Company **South Penn Natural Gas Company**  
Address **Union Trust Bldg. Parkersburg, W. Va.**  
Farm **Samuel Barker** Acres **80**  
Location (waters) **Price Fork of Fishing Creek**  
Well No. **4** Elev. **1136.71**  
District **Grant** County **Wetzel**  
The surface of tract is owned in fee by **Samuel Barker**  
Address **Smithfield, W. Va.**  
Mineral rights are owned by **Samuel Barker**  
Address **Smithfield, W. Va.**  
Drilling commenced **June 15, 1903**  
Drilling completed **Sept. 17, 1903**  
Date Shot **See below** From **-** To **-**  
With **-**

Casing and Tubing	Used in Drilling	Left in Well	Packers
Size			
16.			Kind of Packer -
13.			-
10.	<b>263' (Pulled)</b>		Size of -
8 3/4	<b>1475' (Pulled)</b>		-
6%	<b>2165'</b>		Depth set -
5 3/16	<b>2335'</b>		-
3.			Perf. top -
2.			Perf. bottom -
Liners Used			Perf. top -
<b>Cond.</b>	<b>16'</b>		Perf. bottom -

Open Flow /10ths Water in **--** Inch  
/10ths Merc. in **--** Inch  
Volume **--** Cu. Ft.  
Rock Pressure **--** lbs. **--** hrs.  
Oil **4** bbls., 1st 24 hrs.  
Fresh water **--** feet **--** feet  
Salt water **--** feet **--** feet

CASING CEMENTED **-** SIZE **-** No. Ft. **-** Date **-**  
COAL WAS ENCOUNTERED AT **954** FEET **48** INCHES  
**-** FEET **-** INCHES **-** FEET **-** INCHES  
**-** FEET **-** INCHES **-** FEET **-** INCHES

Formation	Color	Hard or Soft	Top	Bottom	Oil, Gas or Water	Depth Found	Remarks
Pittsburgh Coal			954	958			
Dunkard Sand			1475	1495			
Gas Sand			1778	1820			
Salt Sand			1893	1958			
Pencil Cave			2139	2148			
Big Lime			2148	2229			
Big Injun Sand			2228	2340			
Stray Sand			3000	3040	Gas	2233	
Gordon Sand			3044	3064	Gas Oil	3045 3049	
Total Depth				3085			

SHOT RECORD:  
9-19-03 - 30 Qts.  
4-13-04 - 30 "  
1-29-07 - 50 "  
5-17-11 - 90 "  
12-18-18 - 20 "

DEC 1902

Formation	Color	Hard or Soft	Top	Bottom	Oil, Gas or Water	Depth Found	Remarks

Date **December 4, 1942.**

194

APPROVED **SOUTH PENN NATURAL GAS COMPANY** Owner  
**Land Agent**

By *Alton Young*  
 (Title)