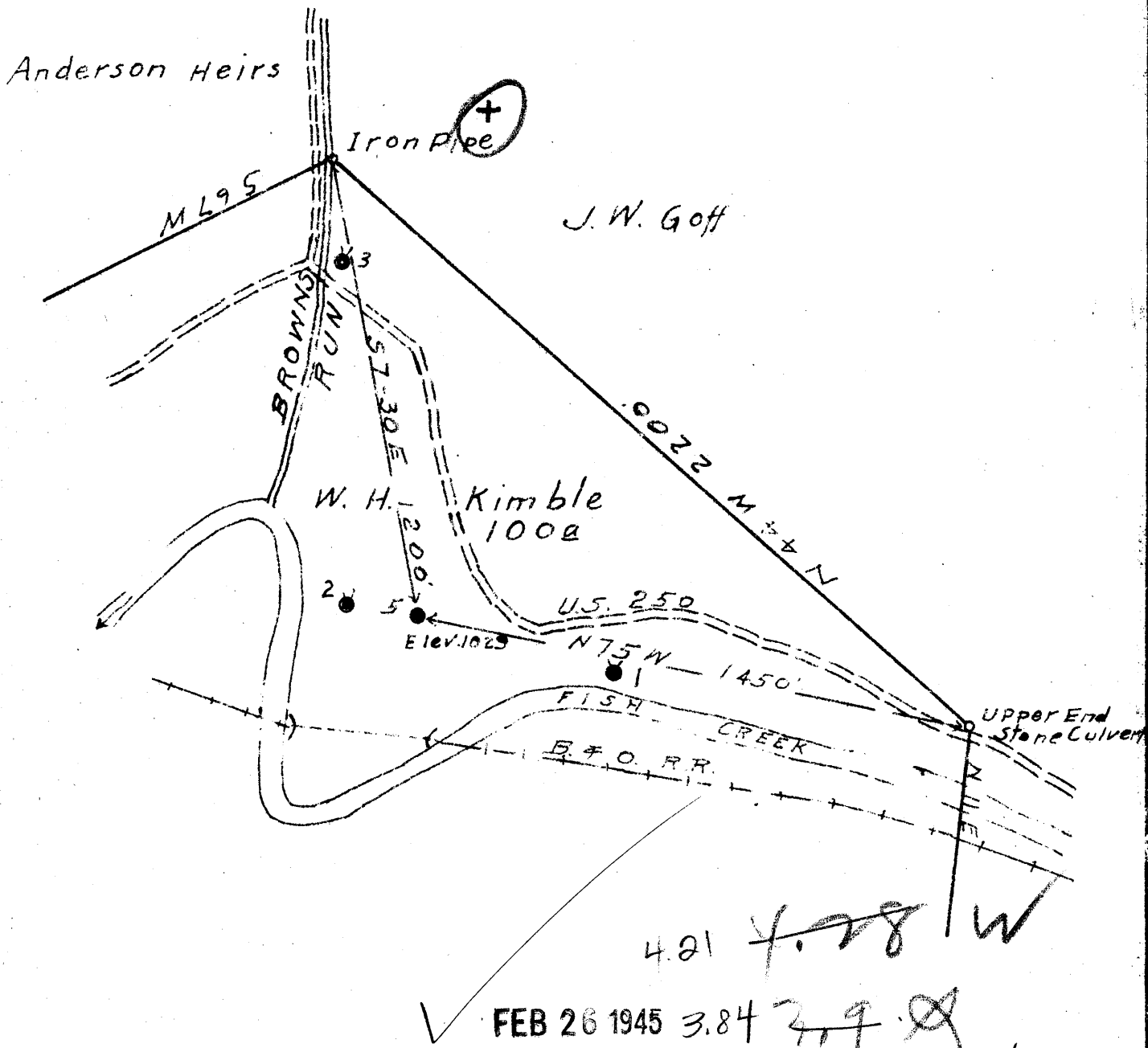


0 1 2 3 Latitude 39 45  
 1 Longitude 80 25  
 2  
 3



Company BROWNS RUN Gas Co.  
 Address Hundred, W.Va.  
 Farm W.H. Kimble  
 Tract #1 Acres 100 Lease No. \_\_\_\_\_  
 Well (Farm) No. 5 to be Abandoned Serial No. \_\_\_\_\_  
 Elevation (Spirit Level) 1029  
 Quadrangle Mannington **WW**  
 County Weizel District Clay  
 Engineer C.D. Nutter  
 Engineer's Registration No. \_\_\_\_\_  
 File No. \_\_\_\_\_ Drawing No. \_\_\_\_\_  
 Date Feb. 10, 1945 Scale 1" = 400'

STATE OF WEST VIRGINIA  
 DEPARTMENT OF MINES  
 OIL AND GAS DIVISION  
 CHARLESTON

WELL LOCATION MAP  
 FILE NO. WET-494-A

+ Denotes location of well on United States Topographic Maps, scale 1:62,500, latitude and longitude lines being represented by border lines as shown.

- Denotes one inch spaces on map of original tracing.

W.H. KIMBLE NO. 5 - BROWNS RUN GAS CO. - WET-494-A



948

STATE OF WEST VIRGINIA  
DEPARTMENT OF MINES  
OIL AND GAS DIVISION

WELL RECORD

Permit No. WET-494 **A**

Oil or Gas Well \_\_\_\_\_  
(KIND)

Company Browns Run Gas Company  
Address Hundred, West Virginia  
Farm W. H. Kimble Acres 100  
Location (waters) Fish Creek  
Well No. 5 Elev. 1029  
District Clay County Wetzel  
The surface of tract is owned in fee by W. H. Kimble Heirs  
Address \_\_\_\_\_  
Mineral rights are owned by \_\_\_\_\_  
Address \_\_\_\_\_  
Drilling commenced \_\_\_\_\_  
Drilling completed August 4, 1928  
Date Shot \_\_\_\_\_ From \_\_\_\_\_ To \_\_\_\_\_  
With \_\_\_\_\_  
Open Flow \_\_\_\_\_ /10ths Water in \_\_\_\_\_ Inch  
\_\_\_\_\_ /10ths Merc. in \_\_\_\_\_ Inch  
Volume \_\_\_\_\_ Cu. Ft.  
Rock Pressure \_\_\_\_\_ lbs. \_\_\_\_\_ hrs.  
Oil \_\_\_\_\_ bbls., 1st 24 hrs.  
Fresh water \_\_\_\_\_ feet \_\_\_\_\_ feet  
Salt water \_\_\_\_\_ feet \_\_\_\_\_ feet

Casing and Tubing	Used in Drilling	Left in Well	Packers
Size			
16			Kind of Packer
13			
10	385	385	Size of
8 1/2	1225	Pulled	
6 1/2	1944	1944	Depth set
5 3/16			
3			Perf. top
2	2928	2928	Perf. bottom
Liners Used			Perf. top
			Perf. bottom

CASING CEMENTED \_\_\_\_\_ SIZE \_\_\_\_\_ No. Ft. \_\_\_\_\_ Date \_\_\_\_\_  
COAL WAS ENCOUNTERED AT \_\_\_\_\_ FEET \_\_\_\_\_ INCHES  
Pittsburgh - 743-750  
\_\_\_\_\_ FEET \_\_\_\_\_ INCHES \_\_\_\_\_ FEET \_\_\_\_\_ INCHES  
\_\_\_\_\_ FEET \_\_\_\_\_ INCHES \_\_\_\_\_ FEET \_\_\_\_\_ INCHES

Formation	Color	Hard or Soft	Top	Bottom	Oil, Gas or Water	Depth Found	Remarks
Pittsburgh Coal			743	750			
Big Dunkard			1220	1300			
Gas Sand			1410	1445			
Gas Sand			1490	1540	Show Gas		
1st Salt Sand			1590	1610			
2d Salt Sand			1710	1860			
Big Lime			1940	2000	Gas - 1788		
Big Injun			2000	2210	Gas - 2015-2065		
Lime			2795				
Stray Sand			2825	2859	Gas - 2843		
4th Sand			2881	2895			
Total Depth				2928			

