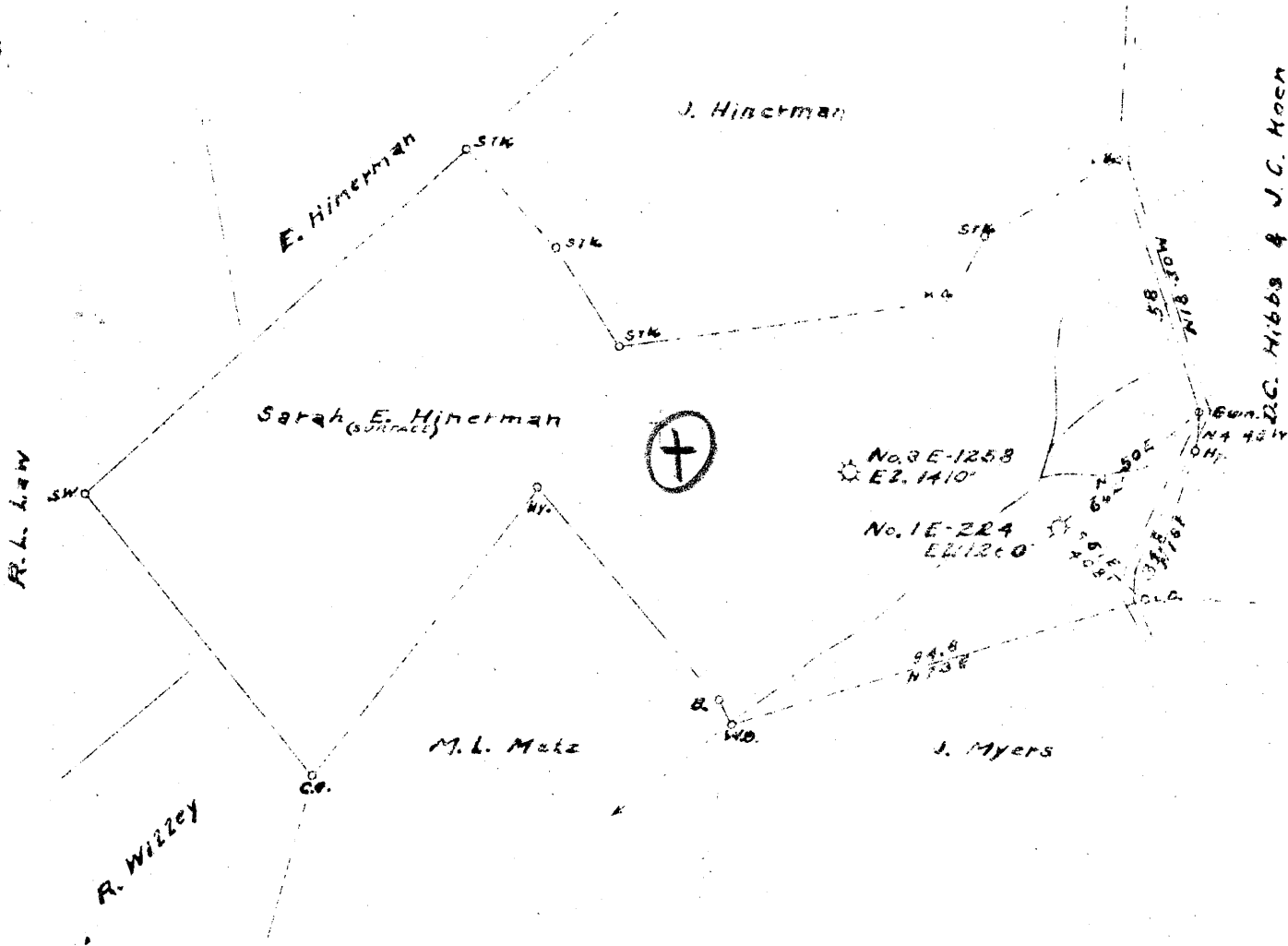


Latitude 9° 40'

Longitude 80° 25'



3.58 ~~3.62~~ W  
 5.39 ~~5.47~~ W

New Location  
 Drill Deeper  
 Abandonment X

✓ MAR 11 1947

Company CARNEGIE NATURAL GAS  
 Address PITTSBURGH, PA.  
 Farm G. L. McINTIRE  
 Tract \_\_\_\_\_ Acres 120. Lease No. E-41327A  
 Well (Farm) No. 1 Serial No. E-224  
 Elevation (Spirit Level) 1260'  
 Quadrangle MANNINGTON, S.W. **WC**  
 County WETZEL District GRANT  
 Engineer R. L. SWEENEY  
 Engineer's Registration No. \_\_\_\_\_  
 File No. \_\_\_\_\_ Drawing No. \_\_\_\_\_  
 Date 1-21-47 Scale 1" = 40' P.D.S. = 660'

STATE OF WEST VIRGINIA  
 DEPARTMENT OF MINES  
 OIL AND GAS DIVISION  
 CHARLESTON

WELL LOCATION MAP  
 FILE NO. WET-555-A

+ Denotes location of well on United States Topographic Maps, scale 1 to 62,500. Latitude and longitude lines being represented by border lines as shown.  
 - Denotes one inch spaces on border line of original tracing.

G. L. McINTIRE No. 1 (E-224) - CARNEGIE N.G.C. - WET-555-A



1024

STATE OF WEST VIRGINIA  
DEPARTMENT OF MINES  
OIL AND GAS DIVISION

WELL RECORD

Permit No. 555-A

WELL TO BE ABANDONED

Oil or Gas Well GAS  
(KIND)

Company CARNEGIE NATURAL GAS COMPANY  
 Address 1015 Frick Bldg., PITTSBURGH, PA.  
 Farm G. L. McINTIRE Acres 120  
 Location (waters) \_\_\_\_\_  
 Well No. 224 Elev. 1260  
 District GRANT County WETZEL  
 The surface of tract is owned in fee by SEE BELOW  
 Address \_\_\_\_\_  
 Mineral rights are owned by SEE BELOW  
 Address \_\_\_\_\_  
 Drilling commenced 3-15-10  
 Drilling completed 5-17-10 D.D. 4-2-17  
 Date Shot \_\_\_\_\_ From \_\_\_\_\_ To \_\_\_\_\_  
 With \_\_\_\_\_  
 Open Flow /10ths Water in \_\_\_\_\_ Inch  
 /10ths Merc. in \_\_\_\_\_ Inch  
 Volume \_\_\_\_\_ Cu. Ft.  
 Rock Pressure \_\_\_\_\_ lbs. \_\_\_\_\_ hrs.  
 Oil \_\_\_\_\_ bbls., 1st 24 hrs.  
 Fresh water \_\_\_\_\_ feet \_\_\_\_\_ feet  
 Salt water 1722 feet 1830 feet

Casing and Tubing	Used in Drilling	Left in Well	Packers
Size			
16			Kind of Packer
18			
10	<u>225</u>	<u>225</u>	Size of
8 1/4	<u>1350</u>	<u>1350</u>	
6 1/2	<u>1871</u>	<u>1871</u>	Depth set
5 3/16	<u>2159</u>	<u>2159</u>	
3			Perf. top
2			Perf. bottom
Liners Used			Perf. top
			Perf. bottom

CASING CEMENTED \_\_\_\_\_ SIZE \_\_\_\_\_ No. Ft. \_\_\_\_\_ Date \_\_\_\_\_  
 COAL WAS ENCOUNTERED AT 929 FEET \_\_\_\_\_ INCHES  
 \_\_\_\_\_ FEET \_\_\_\_\_ INCHES \_\_\_\_\_ FEET \_\_\_\_\_ INCHES  
 \_\_\_\_\_ FEET \_\_\_\_\_ INCHES \_\_\_\_\_ FEET \_\_\_\_\_ INCHES

Formation	Color	Hard or Soft	Top	Bottom	Oil, Gas or Water	Depth Found	Remarks
Pittsburgh Coal			929	937			
Big Dunkard			1400	1455			
Gas Sand			1575	1637			
1st Salt Sand			1683	1744	Water	1722	
2nd Salt Sand			1779	1800	Water	1830	
3rd Salt Sand			1910	1955			
Manton Sand			2050		Gas	2052, 2057, 2061.	
<i>salt</i>							
TOTAL DEPTH 5-17-10				2065			
<i>salt</i>							
Manton Sand				2115			
Little Lime			2121	2134			
Pencil Cave			2134	2140			
Big Lime			2140	2195			
Big Injun			2212	2346	Gas	2238, 2277.	
Quapw Sand			2358	2395			
50-Foot Sand			2858	2868	Gas	2862-2865	
30-Foot Sand			2947	2980			
Gorden Stray			3050	3052			
4th Sand			3102	3114			
TOTAL DEPTH 4-2-17				3175			

New Atty - 1110

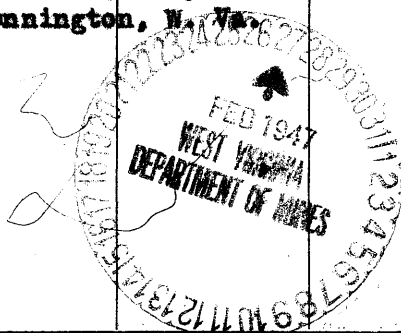
OWNERS of SURFACE

Heirs of W. S. Hinerman,  
Sarah E. Hinerman, Atty-in-Fact,  
Rt. 1, Mannington, W. Va.

OWNERS of MINERAL RIGHTS

Heirs of W. S. Hinerman,  
Sarah E. Hinerman, Atty-in-Fact,  
Rt. 1, Mannington, W. Va.

Heirs of Emma J. McIntire,  
H. H. McIntire, Atty-in-Fact,  
406 E. Green St., Connellsville, Pa.





1024

STATE OF WEST VIRGINIA  
DEPARTMENT OF MINES  
OIL AND GAS DIVISION

WELL RECORD

WELL TO BE ABANDONED

Oil or Gas Well **GAS**  
(KIND)

Permit No. 555-A

Company **CARNEGIE NATURAL GAS COMPANY**  
Address **1015 Frick Bldg., PITTSBURGH, PA.**  
Farm **G. L. McINTIRE** Acres **120**  
Location (waters) **(1)**  
Well No. **224** Elev. **1260**  
District **GRANT** County **WETZEL**  
The surface of tract is owned in fee by **SEE BELOW**  
Address \_\_\_\_\_  
Mineral rights are owned by **SEE BELOW**  
Address \_\_\_\_\_  
Drilling commenced **3-15-10**  
Drilling completed **5-17-10 D.D. 4-2-17**  
Date Shot \_\_\_\_\_ From \_\_\_\_\_ To \_\_\_\_\_  
With \_\_\_\_\_  
Open Flow /10ths Water in \_\_\_\_\_ Inch  
/10ths Merc. in \_\_\_\_\_ Inch  
Volume \_\_\_\_\_ Cu. Ft.  
Rock Pressure \_\_\_\_\_ lbs. \_\_\_\_\_ hrs.  
Oil \_\_\_\_\_ bbls., 1st 24 hrs.  
Fresh water \_\_\_\_\_ feet \_\_\_\_\_ feet  
Salt water **1722** feet **1830** feet

Casing and Tubing	Used in Drilling	Left in Well	Packers
Size			
16			Kind of Packer
18			
10	<b>225</b>	<b>225</b>	Size of
8 3/4	<b>1350</b>	<b>1350</b>	
6	<b>1871</b>	<b>1871</b>	Depth set
5 3/16	<b>2159</b>	<b>2159</b>	
3			Perf. top
2			Perf. bottom
Liners Used			Perf. top
			Perf. bottom

CASING CEMENTED \_\_\_\_\_ SIZE \_\_\_\_\_ No. Ft. \_\_\_\_\_ Date \_\_\_\_\_  
COAL WAS ENCOUNTERED AT **929** FEET \_\_\_\_\_ INCHES  
\_\_\_\_\_ FEET \_\_\_\_\_ INCHES \_\_\_\_\_ FEET \_\_\_\_\_ INCHES  
\_\_\_\_\_ FEET \_\_\_\_\_ INCHES \_\_\_\_\_ FEET \_\_\_\_\_ INCHES

Formation	Color	Hard or Soft	Top	Bottom	Oil, Gas or Water	Depth Found	Remarks
Pittsburgh Coal			929	937			
Big Dunkard			1400	1455			
Gas Sand			1575	1637			
1st Salt Sand			1683	1744	Water	1722	
2nd Salt Sand			1779	1800	Water	1830	
3rd Salt Sand			1910	1955			
Marton Sand			2050		Gas	2052, 2057, 2061.	
<i>salt</i>							
TOTAL DEPTH 5-17-10				2065			
<i>salt</i>							
Marton Sand				2115			
Little Lime			2121	2134			
Pencil Cave			2134	2140			
Big Lime			2140	2195			
Big Injun			2212	2346	Gas	2238, 2277.	
Squaw Sand			2358	2395			
50-Foot Sand			2858	2868	Gas	2862-2865	
30-Foot Sand			2947	2980			
Garden Stray			3050	3052			
4th Sand			3102	3114			
TOTAL DEPTH 4-2-17				3175			

OWNERS of SURFACE

Heirs of W. S. Hinerman,  
Sarah E. Hinerman, Atty-in-Fact,  
Rt. 1, Mannington, W. Va.

OWNERS of MINERAL RIGHTS

Heirs of W. S. Hinerman,  
Sarah E. Hinerman, Atty-in-Fact,  
Rt. 1, Mannington, W. Va.

Heirs of Emma J. McIntire,  
H. H. McIntire, Atty-in-Fact,  
406 E. Green St., Connellsville, Pa.

