

Latitude

Longitude

+ 2.57 s
.78 w

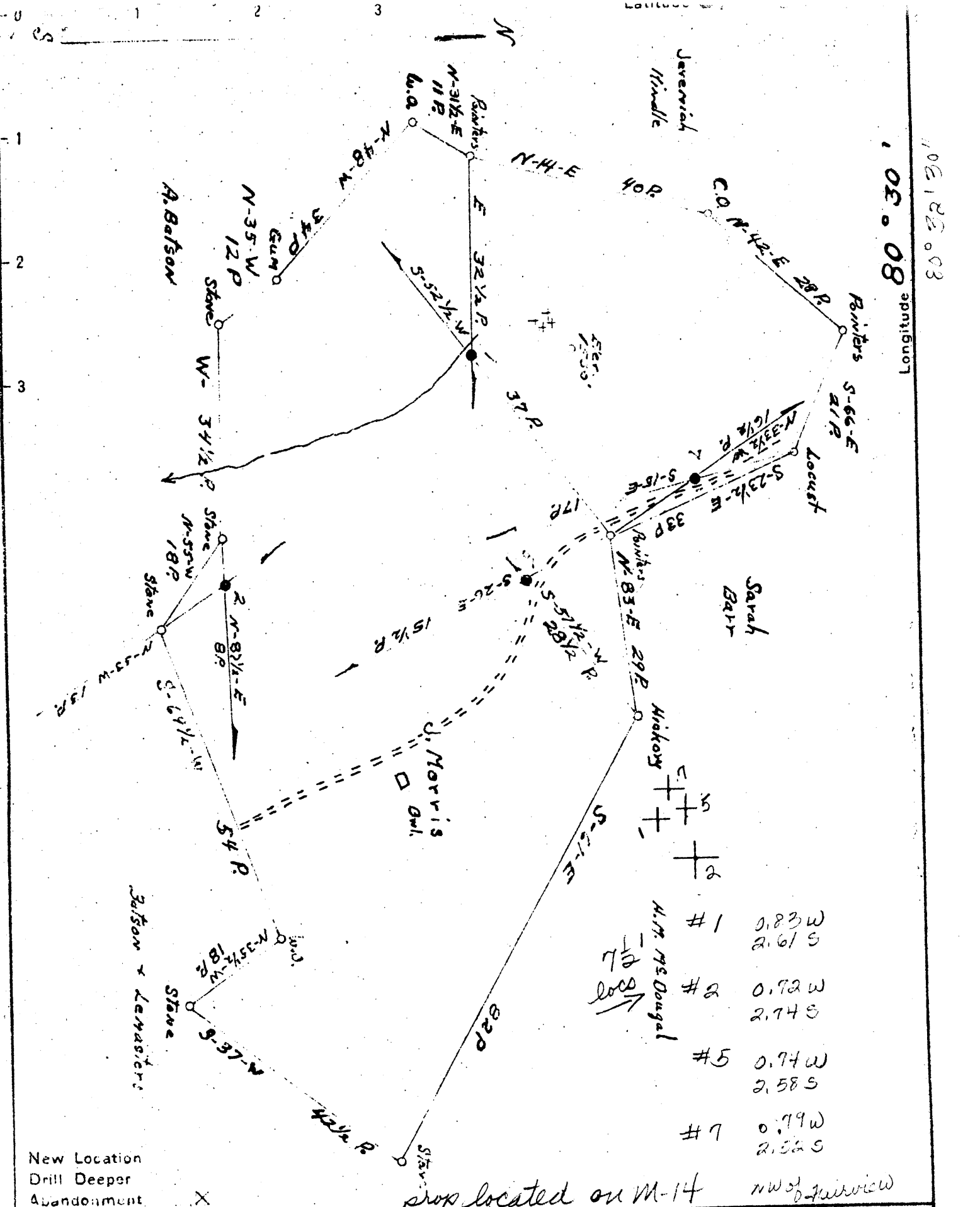
Topo Location

7.5' Loc. _____ 15' Loc. _____
_____ (calc.) _____

Company American Oil Dev. Co
Farm J Morris #5
15' Quad _____
(sec.) _____
7.5' Quad Big Run
District Grant

WELL LOCATION PLAT

County 103 Permit 30568



New Location
Drill Deeper
Abandonment X

prop located on M-14 NW 1/4 of Survey

Company American Oil Development Co.
 Address Sistersville W. Va.
 Farm J. Morris
 Tract _____ Acres 75 Lease No. _____
 Well (Farm) No. 1257 Serial No. 1-1222.59 2-1300.01
 Elevation (Spirit Level) 5-1462.85 7-1426.47
 Quadrangle Littleton SE
 County Welzel District Grant
 Engineer J. S. Haight
 Engineer's Registration No. County Surveyor Tyler County
 File No. _____ Drawing No. _____
 Date 2-16-47 Scale 1" = 2000'

STATE OF WEST VIRGINIA
 DEPARTMENT OF MINES
 OIL AND GAS DIVISION
 CHARLESTON

WELL LOCATION MAP
 FILE NO. WET-564-A-#1
WET-565-A-#2; 568-A-#5; 569-A-#7

+ Denotes location of well on United States Topographic Maps, scale 1 to 62,500, latitude and longitude lines being represented by border lines as shown.

- Denotes one inch spaces on border line of original tracing.

Big Run 7 1/2

Name
 Location
 Date
 The surface of tract is owned in fee by
 Address
 Mineral rights are owned by
 Address
 Drilling commenced
 Drilling completed
 Date Shot NOV 30 1975 From 1975 To
 With 80 inches of
 Open Flow /10ths Water in
 /10ths Merc in
 Volume
 Rock Pressure lbs
 Oil
 Fresh water feet
 Salt water feet

Formation	Color	Hard or Soft
261		
1st Pay		
2d Pay		
Total Depth		

Inch	SIZE	No. Ft.	Date
Inch	CASING CEMENTED		
Cv. Ft.			
hrs			
24 hrs	COAL WAS ENCOUNTERED AT	1193	FEET INCHES
feet	FEET INCHES	FEET	INCHES
feet	FEET INCHES	FEET	INCHES

Bottom	OIL Gas or Water	Depth Found	Remarks
--------	------------------	-------------	---------

