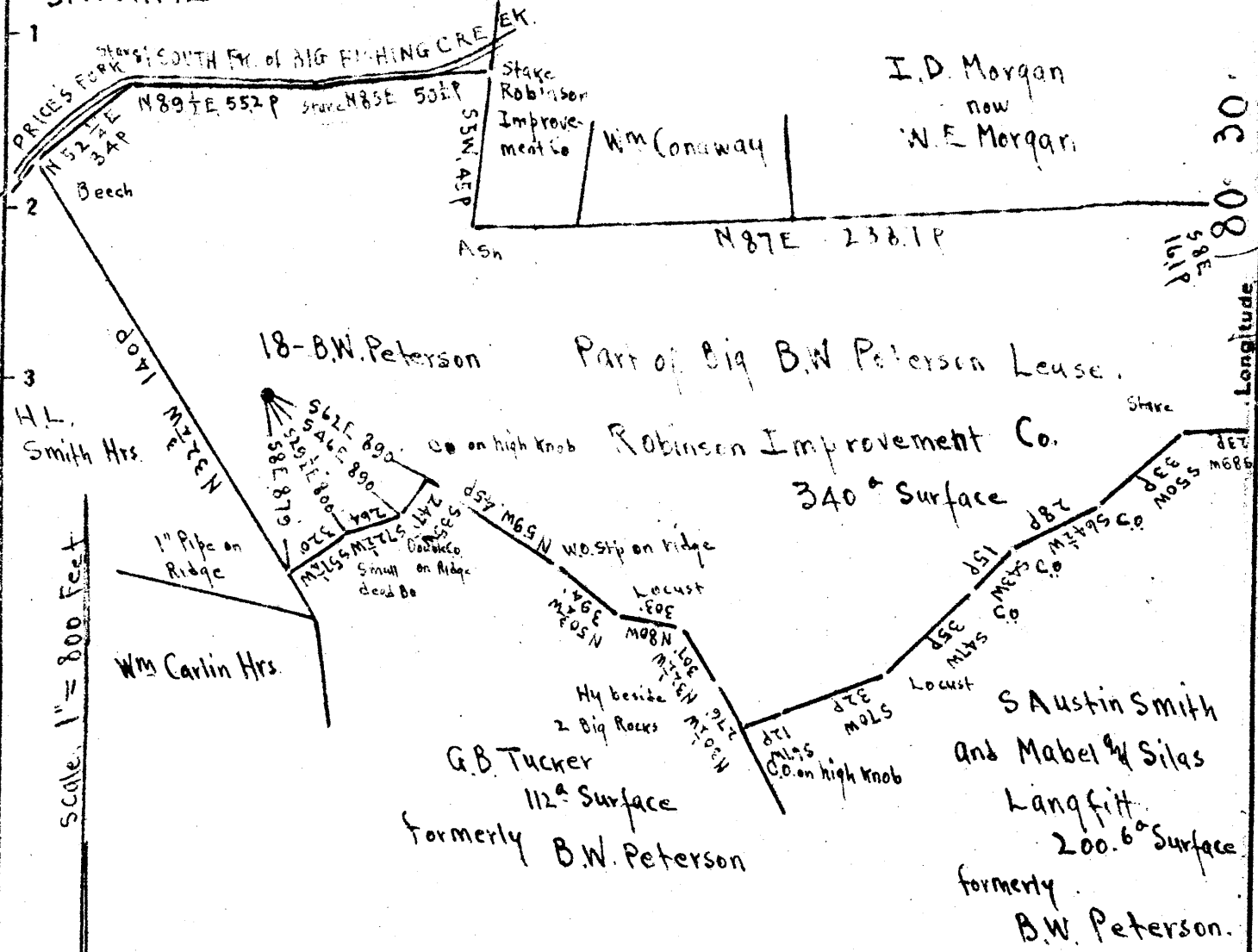


SMITHFIELD



Scale: 1" = 800 Feet

Longitude

Surface: Robinson Improvement Co.

Address: W.A. Lewis, Agent, The Plains, Fauquier Co., Va.

Pittsburgh Coal: Pittsburgh Consolidation Coal Co., Watson Bldg., Fairmont, W. Va.

296 7.0 W

0.02  
N.A.E.A.

- New Location
- Drill Deeper
- Abandonment

SEP 30 1947

Company Otis Eastern Service Inc.  
 Address Bolivar, New York  
 Farm B.W. Peterson  
 Tract \_\_\_\_\_ Acres 340 Lease No. \_\_\_\_\_  
 Well (Farm) No. 18 Serial No. \_\_\_\_\_ Concrete Floor \_\_\_\_\_  
 Elevation (Spirit Level) Ground - 1199.92 Level with \_\_\_\_\_  
 Quadrangle CENTERPOINT  
 County Wetzel District Grant  
 Engineer E.C. Tabler  
 Engineer's Registration No. \_\_\_\_\_  
 File No. \_\_\_\_\_ Drawing No. \_\_\_\_\_  
 Date Sept 9<sup>th</sup> 1947 Scale 1" = 800 Feet

STATE OF WEST VIRGINIA  
 DEPARTMENT OF MINES  
 OIL AND GAS DIVISION  
 CHARLESTON

WELL LOCATION MAP  
 FILE NO. WET-605-A

+ Denotes location of well on United States Topographic Maps, scale 1 to 62,500, latitude and longitude lines being represented by border lines as shown.

- Denotes one inch spaces on border line of original tracing.



STATE OF WEST VIRGINIA  
DEPARTMENT OF MINES  
OIL AND GAS DIVISION

1078

WELL RECORD

Oil or Gas Well **OIL**  
(KIND)

Permit No. \_\_\_\_\_

Company **South Penn Natural Gas Company**  
Address **Union Trust Bldg., Parkersburg, W.Va.**  
Farm **B. W. Peterson** Acres **4564**  
Location (waters) \_\_\_\_\_  
Well No. **18** Elev. **1177**  
District **Grant** County **Wetzel**  
The surface of tract is owned in fee by \_\_\_\_\_  
Address \_\_\_\_\_  
Mineral rights are owned by \_\_\_\_\_  
Address \_\_\_\_\_  
Drilling commenced **Dec. 12, 1896**  
Drilling completed **Jan. 26, 1897**  
Date Shot \_\_\_\_\_ From \_\_\_\_\_ To \_\_\_\_\_  
With **Torpedo Record**

Casing and Tubing	Used in Drilling	Left in Well	Packers
Size			
16			Kind of Packer
13			
10	<b>700' 9"</b>	<b>None</b>	Size of
8 1/4	<b>1481' 4"</b>	<b>None</b>	
6 5/8	<b>2271' 8"</b>	<b>2271' 8"</b>	Depth set
5 3/16	<b>2291'</b>	<b>2291'</b>	
3			Perf. top
2" U. E.	<b>2360'</b>	<b>2360'</b>	Perf. bottom
Liners Used			Perf. top
<b>Wood S.R.</b>	<b>2354'</b>	<b>2354'</b>	Perf. bottom

Open Flow \_\_\_\_\_ /10ths Water in \_\_\_\_\_ Inch  
\_\_\_\_\_ /10ths Merc. in \_\_\_\_\_ Inch  
Volume \_\_\_\_\_ Cu. Ft.  
Rock Pressure \_\_\_\_\_ lbs. \_\_\_\_\_ hrs.  
Oil **25** bbls., 1st 24 hrs.  
Fresh water \_\_\_\_\_ feet \_\_\_\_\_ feet  
Salt water \_\_\_\_\_ feet \_\_\_\_\_ feet

CASING CEMENTED \_\_\_\_\_ SIZE \_\_\_\_\_ No. Ft. \_\_\_\_\_ Date \_\_\_\_\_  
COAL WAS ENCOUNTERED AT **970** FEET **60** INCHES  
\_\_\_\_\_ FEET \_\_\_\_\_ INCHES FEET \_\_\_\_\_ INCHES  
\_\_\_\_\_ FEET \_\_\_\_\_ INCHES FEET \_\_\_\_\_ INCHES

Formation	Color	Hard or Soft	Top	Bottom	Oil, Gas or Water	Depth Found	Remarks
<b>Conductor</b>				<b>16</b>			
<b>Coal, Fgh.</b>			<b>970</b>	<b>975</b>			
<b>Dunkard Sand</b>			<b>1460</b>	<b>1490</b>			
<b>Salt Sand</b>			<b>1920</b>	<b>1970</b>			
<b>Big Lime</b>			<b>2180</b>	<b>2268</b>			
<b>Pencil Cove</b>			<b>2173</b>	<b>2180</b>			
<b>Big Injun</b>			<b>2268</b>				
<b>Gas</b>			<b>2358 (2355)</b>				
<b>1st. Pay Oil</b>			<b>2355</b>				
<b>Total Depth</b>			<b>2368</b>				
<b>Remarks:</b>							
Dec. 2, 1925 dropped 431' of tubing about 2 jts. and 400' of rods - 20 rods all in shot hole but well cleaned out on bottom May 1, 1926.							
<b>Torpedo Record:</b>							
June 1, 1901 ----- 16 qts. ----- 2355'							
June 6, 1906 ----- 60 qts. ----- 2350'							

Formation	Color	Hard or Soft	Top	Bottom	Oil, Gas or Water	Depth Found	Remarks

Date \_\_\_\_\_, 19\_\_\_\_

APPROVED \_\_\_\_\_, Owner

By \_\_\_\_\_

(Title)

