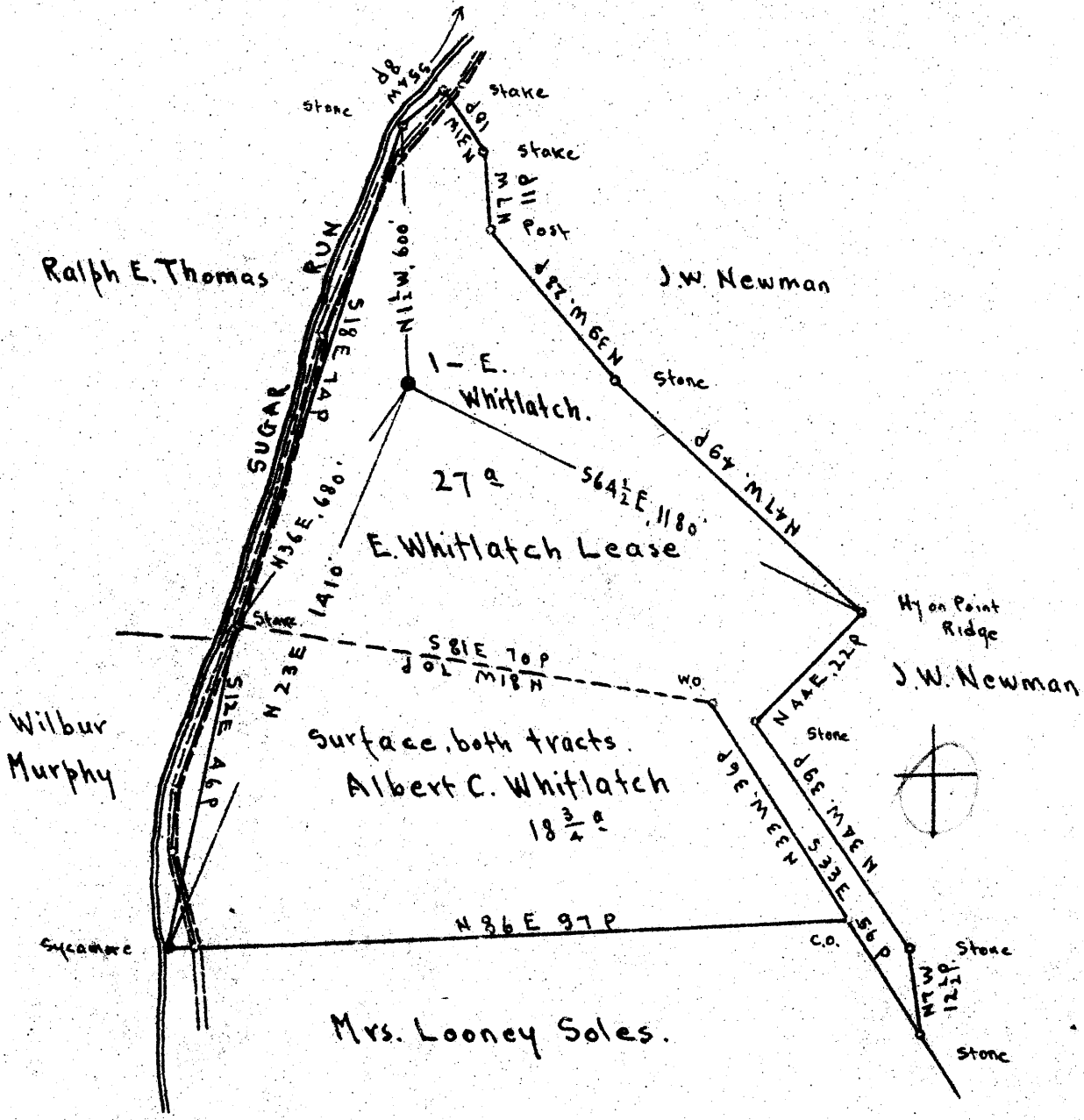


Latitude 39 45

Longitude 80 08

Scale 1" = 400 Feet



Surface: Albert C. Whitlatch.  
 Address Mr. E. Whitlatch, Littleton, W.Va.  
 Coal: Littleton Fuel Co. Uniontown, Pa.

New Location   
 Drill Deeper   
 Abandonment

N 79

JUL 3 1948

544 N 16 E 6

Company Randall-Zogg Supply Co.  
 Address Owensboro, Ky.  
 Farm E. Whitlatch  
 Tract \_\_\_\_\_ Acres 4.6 Lease No. \_\_\_\_\_  
 Well (Farm) No. 1 Serial No. \_\_\_\_\_  
 Elevation (Spirit Level) Floor - 1161.02  
Ground - 1159.02  
 Quadrangle LITTLETON  
 County Wetzel District Clay  
 Engineer E.C. Tabler  
 Engineer's Registration No. \_\_\_\_\_  
 File No. \_\_\_\_\_ Drawing No. \_\_\_\_\_  
 Date April 30<sup>th</sup> 1948 Scale 1" = 400 Feet

STATE OF WEST VIRGINIA  
 DEPARTMENT OF MINES  
 OIL AND GAS DIVISION  
 CHARLESTON

WELL LOCATION MAP  
 FILE NO. Wet-679-A

+ Denotes location of well on United States Topographic Maps, scale 1 to 62,500, latitude and longitude lines being represented by border lines as shown.  
 - Denotes one inch spaces on border line of original tracing.

Latitude

Longitude

+  
 |  
 2.55s  
 |  
 1.39w

Topo Location

7.5' Loc. \_\_\_\_\_ 15' Loc. \_\_\_\_\_  
 \_\_\_\_\_ (calc.) \_\_\_\_\_

#66 MTW Co Rept 1909

Company South Penn

Farm Elsie Whitatch #1

15' Quad \_\_\_\_\_  
(sec.)

7.5' Quad Littleton

District Clay

WELL LOCATION PLAT

County 103 Permit 70359



STATE OF WEST VIRGINIA  
DEPARTMENT OF MINES  
OIL AND GAS DIVISION

1135

WELL RECORD

Oil or Gas Well **Oil**  
(KIND)

Permit No. **679-A**

Company **RANDALL-ZOGG SUPPLY COMPANY**  
Address **BOX 526, CHARLESTON, 22 W. VA.**  
Farm **Elsie Whitlatch** Acres \_\_\_\_\_  
Location (waters) **Sugar Run**  
Well No. **One (1)** Elev. **1161**  
District **Clay** County **Wetzel**  
The surface of tract is owned in fee by **Albert C. Whitlatch**  
Address **Littleton, W. Va.**  
Mineral rights are owned by **Littleton Fuel Co.,**  
Address **Uniontown, Pa.**  
Drilling commenced \_\_\_\_\_  
Drilling completed **March 7, 1904**  
Date Shot **SEE BELOW** From \_\_\_\_\_ To \_\_\_\_\_  
With \_\_\_\_\_  
Open Flow /10ths Water in \_\_\_\_\_ Inch  
/10ths Merc. in \_\_\_\_\_ Inch  
Volume \_\_\_\_\_ Cu. Ft.  
Rock Pressure \_\_\_\_\_ lbs. \_\_\_\_\_ hrs.  
Oil **232** bbls., 1st 24 hrs.  
Fresh water \_\_\_\_\_ feet \_\_\_\_\_ feet  
Salt water \_\_\_\_\_ feet \_\_\_\_\_ feet

Casing and Tubing	Used in Drilling	Left in Well	Packers
Size			Kind of Packer
16			
13			
10	<b>40'</b>	<b>40'</b>	Size of
8 1/4	<b>1385'</b>		
6 5/8	<b>2178'</b>	<b>2178'</b>	Depth set
5 3/16	<b>2469'</b>	<b>2469'</b>	
3			Perf. top
2	<b>2064'</b>	<b>5064'</b>	Perf. bottom
Liners Used			Perf. top
			Perf. bottom

CASING CEMENTED \_\_\_\_\_ SIZE \_\_\_\_\_ No. Ft. \_\_\_\_\_ Date \_\_\_\_\_  
COAL WAS ENCOUNTERED AT **790** FEET \_\_\_\_\_ INCHES  
**885** FEET **96** INCHES FEET INCHES  
FEET INCHES FEET INCHES

Formation	Color	Hard or Soft	Top	Bottom	Oil, Gas or Water	Depth Found	Remarks
Conductor				16			
Mapletown Coal			790				
Pittsburgh Coal			885	893			
Dunkard Sand			1385	1415			
Salt Sand			1630	1770			
Gas Sand			1664				
Maxon Sand			1956	1978			
Little Lime			2060	2090			
Big Lime			2085	2150			
Pencil Cove			2090	2095			
Big Injun Sand			2150	2400			
Stray Sand			2977	3009	Oil	2992	
					Oil	3009	
<b>DRILLED DEEPER</b>							
Garden Sand				3016			
Slate			3016	3057			
Sand			3057	3060			
Brake & Slate			3060	3063			
Fourth Sand			3063	3070	Oil	3064	
Total Depth				3070			

SHOOTING RECORD

Date	Shot with	Qty.
July 8, 1904	"	16
Sept. 14, 1904	"	20
Nov. 1, 1905	"	20
Nov. 3, 1905	"	60
Dec. 13, 1905	"	20
April 12, 1913	"	40



Formation	Color	Hard or Soft	Top	Bottom	Oil, Gas or Water	Depth Found	Remarks

Date June 18, 19 48

APPROVED RANDALL ZOGG SUPPLY COMPANY, Owner

By [Signature]  
(Title) **Agent**

