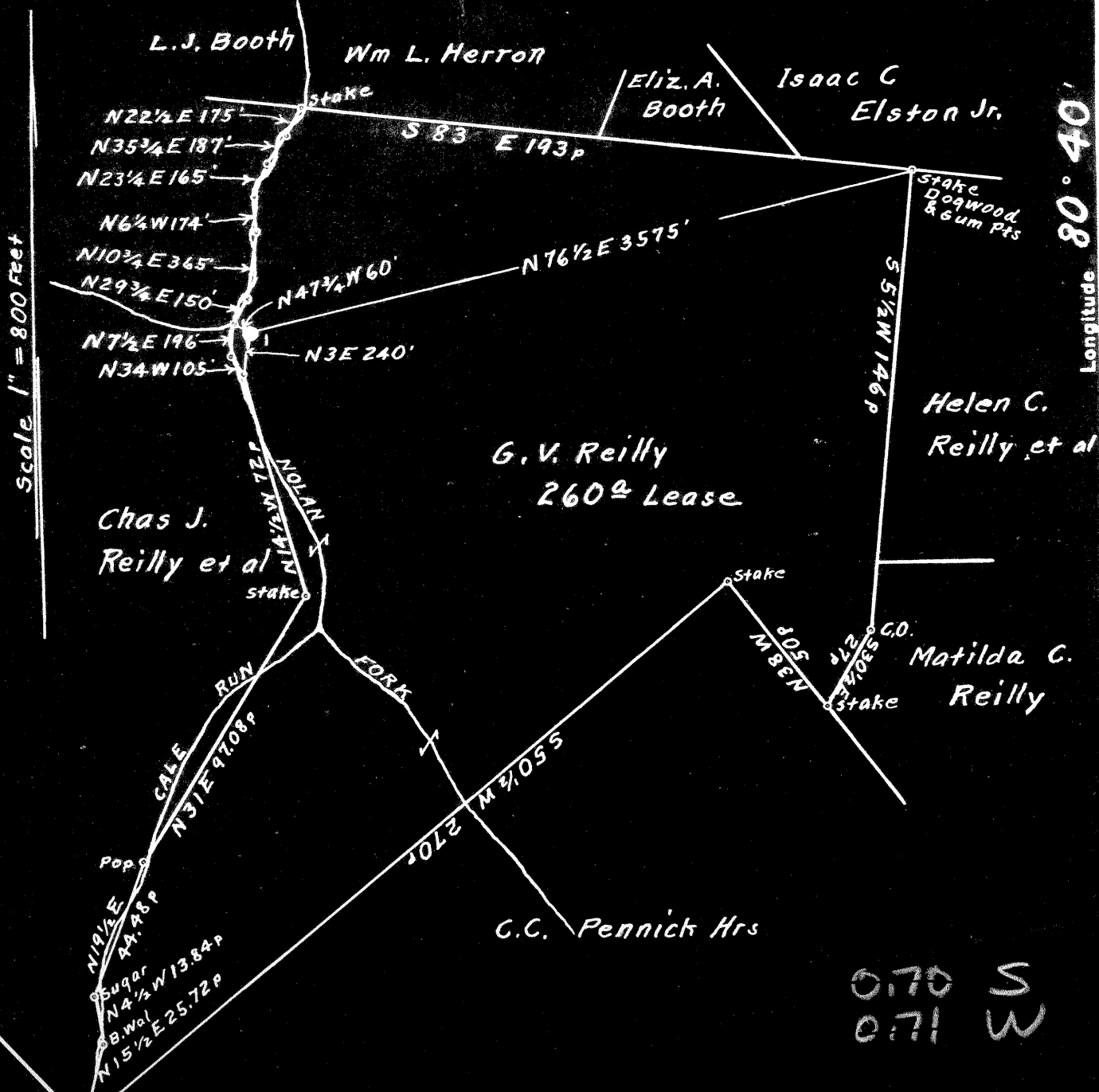


Latitude 39° 30'

Longitude 80° 40'



0.70 S  
0.71 W

Surface: Agnes G. Reilly et al  
 Address: Miss Agnes G. Reilly, Tally Ho, Apt.  
 Wheeling, W. Va.

Coal: No commercial Coal, if any, it belongs  
 to the owners of the Surface.

- New Location...
- Drill Deeper.....
- Abandonment.....

On 800' Map Sheet N57 & N58. Sqs. N3 & 4 W 3 & 4.

Company Pipe Pulling & Plugging Co.  
 Address P.O. Box No. 213, Charleston, W. Va.  
 Farm G. V. Reilly  
 Tract \_\_\_\_\_ Acres 260 Lease No. NW  
 Well (Farm) No. 1. Serial No. \_\_\_\_\_  
 Elevation (Spirit Level) Floor - 887.40  
 Ground - 886.15  
 Quadrangle Centerpoint  
 County Wetzel District Green  
 Engineer Wm. S. Hayes  
 Engineer's Registration No. 1429  
 File No. \_\_\_\_\_ Drawing No. \_\_\_\_\_  
 Date Oct. 21st, 1948. Scale 1" = 800 Feet

STATE OF WEST VIRGINIA  
 DEPARTMENT OF MINES  
 OIL AND GAS DIVISION  
 CHARLESTON

**WELL LOCATION MAP**  
 FILE NO. Wet - 749-A

+ Denotes location of well on United States Topographic Maps, scale 1 to 62,500, latitude and longitude lines being represented by border lines as shown.

- Denotes one inch spaces on border line of original tracing.

**Latitude**

+ .675  
.75w

**Longitude**

**Topo Location**

7.5' Loc. \_\_\_\_\_ 15' Loc. \_\_\_\_\_  
\_\_\_\_\_ (calc.) \_\_\_\_\_

#244 MTW Co Rept 1909

**Company** South Penn

**Farm** Geo. V Reilly #1

**15' Quad** \_\_\_\_\_  
(sec.)

**7.5' Quad** Center Point

**District** Green

**WELL LOCATION PLAT**

**County** 103 **Permit** ~~70500~~

749A



STATE OF WEST VIRGINIA  
DEPARTMENT OF MINES  
OIL AND GAS DIVISION

1219

WELL RECORD

Permit No. HL 749-A

Oil or Gas Well \_\_\_\_\_ (KIND)

Company Pipe Pulling & Plugging Company  
Address Box 213 - Charleston 21, W. Va.  
Farm G. V. Reilly Acres 260  
Location (waters) \_\_\_\_\_  
Well No. 1 Elev. 886.15'  
District Green County Wetzel  
The surface of tract is owned in fee by Agnes G. Reilly etal  
Tally Ho Apts. Address Wheeling, W. Va.  
Mineral rights are owned by Wheeling Dollar Savings  
& Trust Co. Address Wheeling, W. Va.

Casing and Tubing	Used in Drilling	Left in Well	Packers
Size			Kind of Packer
16			
13			
10	316'	0'	Size of
8 1/4	1206'	0'	
6 1/2	2013'	2013'	Depth set
5 3/16			
3			Perf. top
2			Perf. bottom
Liners Used	5-3/16" Liner - 888'		Perf. top
	to top of Gordon		Perf. bottom

Drilling commenced \_\_\_\_\_  
Drilling completed April 13, 1896  
Date Shot \_\_\_\_\_ From \_\_\_\_\_ To \_\_\_\_\_  
With \_\_\_\_\_  
Open Flow \_\_\_\_\_ /10ths Water in \_\_\_\_\_ Inch  
\_\_\_\_\_ /10ths Merc. in \_\_\_\_\_ Inch  
Volume \_\_\_\_\_ Cu. Ft.  
Rock Pressure \_\_\_\_\_ lbs. \_\_\_\_\_ hrs.  
Oil \_\_\_\_\_ bbls., 1st 24 hrs.  
Fresh water \_\_\_\_\_ feet \_\_\_\_\_ feet  
Salt water \_\_\_\_\_ feet \_\_\_\_\_ feet

CASING CEMENTED \_\_\_\_\_ SIZE \_\_\_\_\_ No. Ft. \_\_\_\_\_ Date \_\_\_\_\_  
COAL WAS ENCOUNTERED AT 668 FEET \_\_\_\_\_ INCHES  
\_\_\_\_\_ FEET \_\_\_\_\_ INCHES \_\_\_\_\_ FEET \_\_\_\_\_ INCHES  
\_\_\_\_\_ FEET \_\_\_\_\_ INCHES \_\_\_\_\_ FEET \_\_\_\_\_ INCHES

Formation	Color	Hard or Soft	Top	Bottom	Oil, Gas or Water	Depth Found	Remarks
Pitts. Coal			668	673			
Salt Sand			575	1680			
Big Injun			1995	2100			
Gas			2210				
Gordon			2742	2750			
Oil			2742				
Gas			2765				
TOTAL DEPTH				2805'			

