

Latitude

Longitude

1.845  
48w

Topo Location

7.5' Loc. \_\_\_\_\_ 15' Loc. \_\_\_\_\_  
\_\_\_\_\_ (calc.) \_\_\_\_\_

Company Silver Hill Oil Co

Farm CS Headley #6

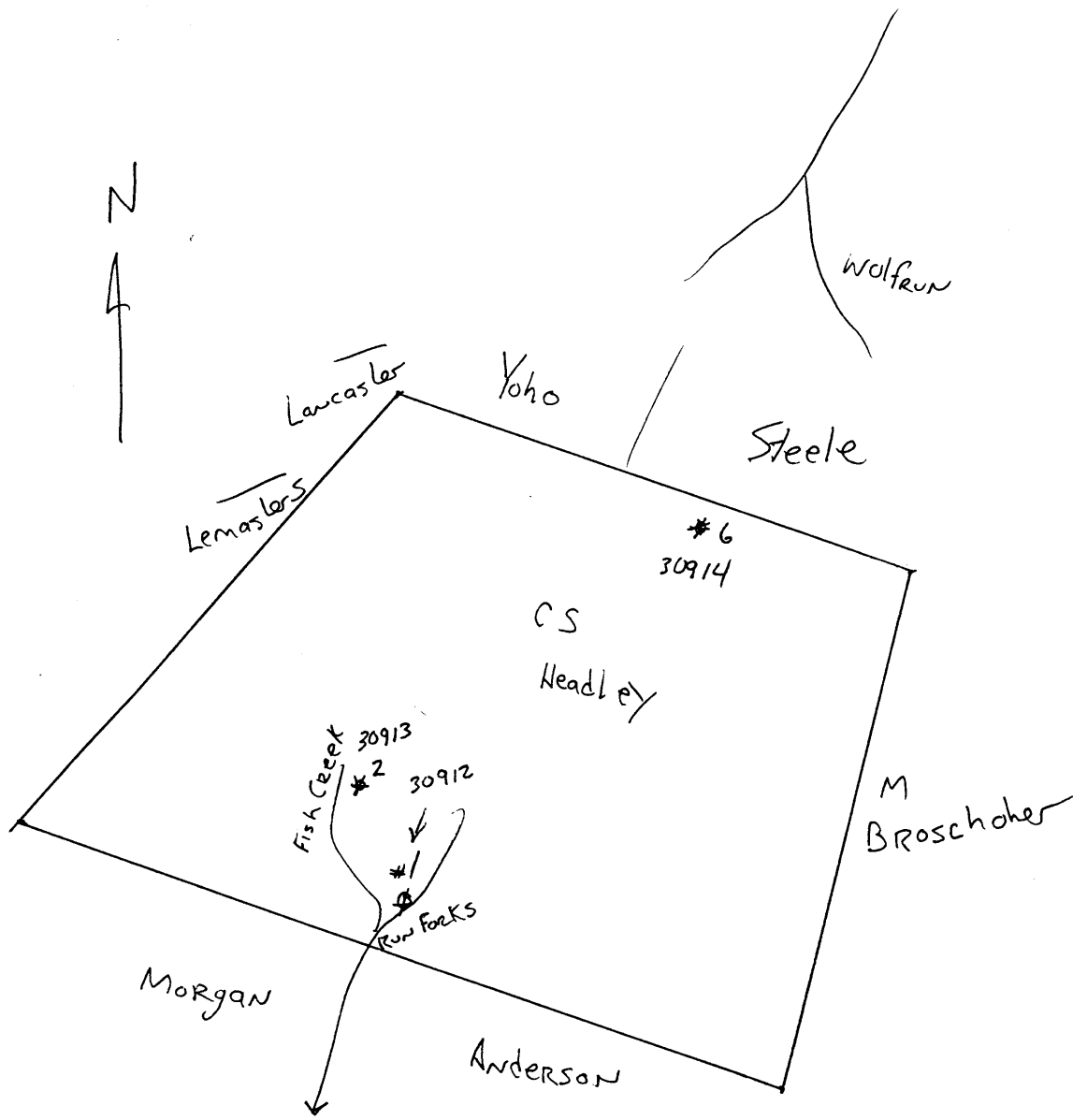
15' Quad \_\_\_\_\_  
(sec.)

7.5' Quad Porters Falls

District Green

WELL LOCATION PLAT

County 103 Permit 30914



103-914A

O.S. Headley No. 6 Well (120-3)(263J)

Green District, Wetzel County, W.Va.; on ridge between Fishing and Little Fishing Creeks, 1.4 miles southwest of Maud; completed May 17, 1919; authority, Silverhill Oil Company; elevation, 1223' (from Silverhill map).

	Top. Feet.	Bottom. Feet.
Coal, <u>Washington</u> .....	565	570
Coal, <u>Waynesburg</u> .....	663	666
Coal, <u>Uniontown</u> .....	780	785
Coal, <u>Mapletown, Bewickley</u> .....	935	939
Coal, <u>Redstone</u> .....	1005	1007
Coal, <u>Pittsburgh</u> .....	1020	1022
Sand, <u>Minshall, Connellville</u> .....	1070	1090
Sand, <u>Grafton</u> .....	1300	1325
Sand, <u>Moundsville, Saltsburg</u> .....	1380	1410
Sand, <u>Little Dunkard, Buffalo</u> .....	1460	1472
Sand, <u>Burning Springs, Upper Freeport</u> ..	1640	1720
Sand, <u>Second Cow Run, Homewood</u> .....	1840	1880
Sand, <u>Salt</u> .....	Like	shells
Sand, <u>Maxton</u> .....	2075	2095
Little Lime, none		
Big Lime (gas, little, at 2170').....	2168	2200
Oil, light in color, 1 - 8" bailer per hour .....	2190	2196
Sand, <u>Big Injun (gas, 2230')</u> .....	2200	2420
Break .....	2420	2423
Sand, <u>Squaw</u> .....	2423	2455
Sand, <u>Weir</u> .....	2600	2660
Sand, <u>Berea</u> .....	2795	2805
Red rock .....	2900	2910
Reduced hole to 5" at .....	2990	
Sand, <u>Thirty-foot</u> .....	2920	3030
Slate .....	3020	3035
Sand, <u>Gordon Stray</u> .....	3035	3044
Sand, <u>Gordon (first oil and gas, 3044- 3049')(steel line)</u> .....	3044	3050
Total depth .....		3060½

10" casing, 420' (pulled out); 8½" csg., 1496' (left in);  
 6 5/8" csg., 2200' (left in), 108 jts.; 5 3/16" liner,  
 216', set at 2990' to 2774'.

Well shot May 19, 1919, with 20 quarts from 3041 to 3047'.  
 Started cleaning out May 19, 1919. Produced natural after  
 shot 74" in 100 bbl. tank, or 60 bbls. Anchor on shot  
 13' 6", below shell, 4½ x 6" 3".

By Silverhill Oil Co. (Midland O&G No. 1660).

Green District, Wetzel County, W. Va.

Elevation, 1233'.

Oil well, 60 bbls.

On ridge between Fishing and Little Fishing Creeks.

1.4 mi. S. W. of Maud.

Completed, May 17, 1919.

Shot, 20 qts., 30<sup>41</sup>-7'.

10" casing, 420'; 8<sup>1</sup>/<sub>2</sub>", 1496'; 6-5/8", 2200'; 5-3/16", 216', used as liner.

	Top.	Bottom.
Coal, Washington	565	- 570
Coal, Waynesburg	663	- 666
Coal, Uniontown	780	- 785
Coal, Mapletown	935	- 939
Coal, Redstone	1005	- 1007
Coal, Pittsburgh	1020	- 1022
Sand	1070	- 1090
Sand	1300	- 1325
Sand, Lt. Dunkard (Moundsville)	1380	- 1410
Sand, Big Dunkard (Little Dunkard)	1460	- 1472
Gas Sand	1640	- 1720
1 Salt Sand	1840	- 1880
2 Salt Sand		lime and shells
Maxton	2075	- 2095
Little Lime		none
Big Lime (little gas, 2170'; oil, 2190-2196'; light oil; 1--8" bailer per hour)	2168	- 2200
Big Injun (gas, 2220')	2200	- 2455
Break.....2420-23'		
Sand, Squaw	2600	- 2660
Berea Sand	2795	- 2805
Red rock	2900	- 2910
50-Ft. Sand	2920	- 3020
Slate	3020	- 3035
Gordon Stray Sand	3035	- 3044
Gordon (oil and gas, 3044-49') (SLM)	3044	- 3050
Total depth		3060 <sup>1</sup> / <sub>2</sub>