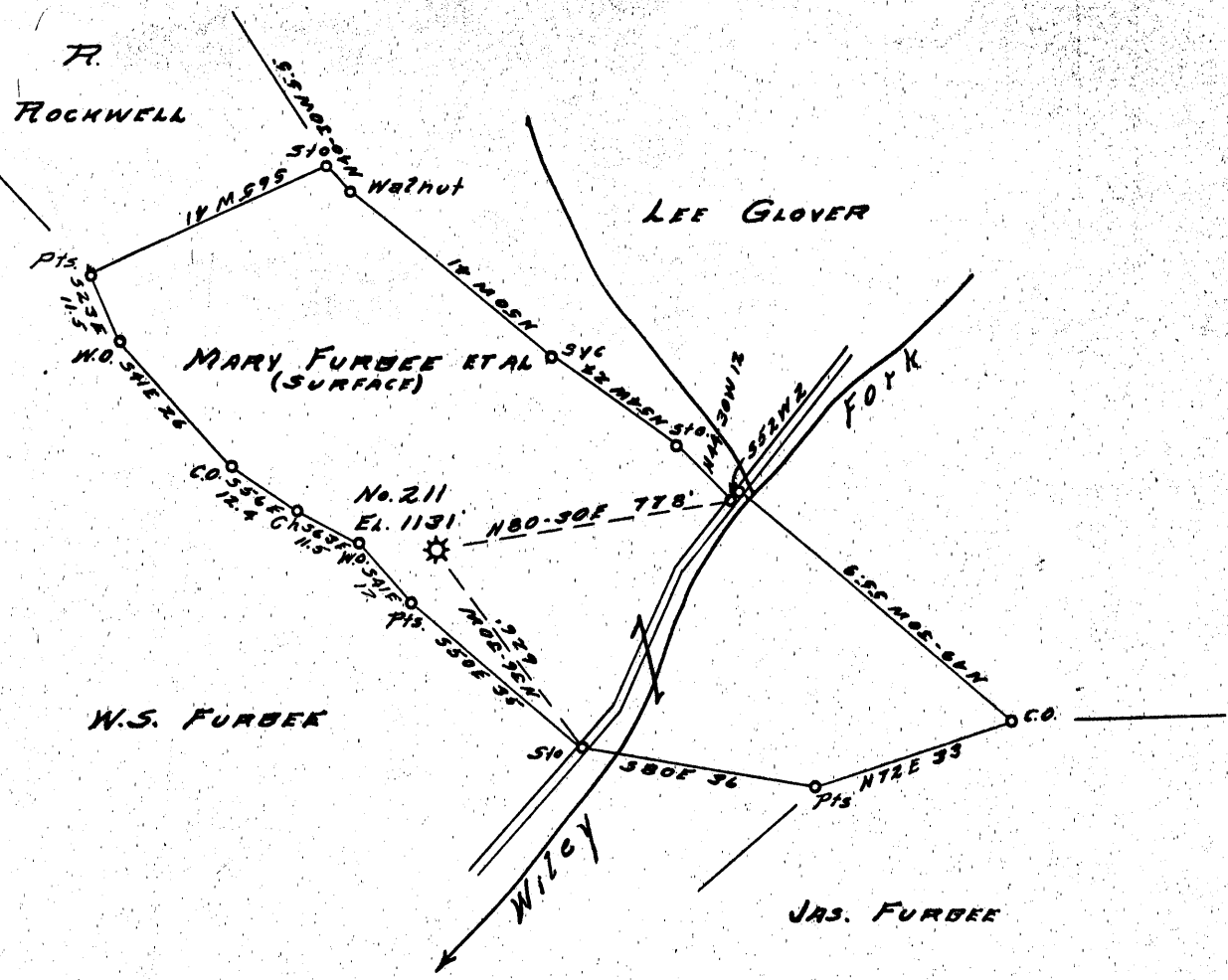


Latitude 79° 35'

Longitude 80° 30'



0.76  
~~0.8~~ W  
1.06 ft + Q

New Location   
Drill Deeper   
Abandonment

AUG 24 1953

Company CARNEGIE NATURAL GAS  
 Address PITTSBURGH, PA  
 Farm FURBEE - HIGHLEY  
 Tract \_\_\_\_\_ Acres 32 Lease No. E-7786-74  
 Well (Farm) No. 1 Serial No. E-211  
 Elevation (Spirit Level) 1131'  
 Quadrangle LITTLETON SE.  
 County WETZEL District GRANT  
 Engineer John Pittcock  
 Engineer's Registration No. 1850  
 File No. \_\_\_\_\_ Drawing No. \_\_\_\_\_  
 Date 7-30-53 Scale 1"=30 Feet

STATE OF WEST VIRGINIA  
DEPARTMENT OF MINES  
OIL AND GAS DIVISION  
CHARLESTON

WELL LOCATION MAP  
FILE NO. Wet-993-A

+ Denotes location of well on United States Topographic Maps, scale 1 to 62,500, latitude and longitude lines being represented by border lines as shown.

- Denotes one inch spaces on border line of original tracing.

FURBEE-HIGHLEY No. 1 (E-211) CARNEGIE N. G. Co. - WET-993-A



STATE OF WEST VIRGINIA  
DEPARTMENT OF MINES  
OIL AND GAS DIVISION

1418

Permit No. 993-A

**WELL RECORD**  
GAS WELL TO BE ABANDONED

Oil or Gas Well Gas  
(KIND)

Company Carnegie Natural Gas Company  
Address 1015 Frick Building, Pittsburgh 19, Pa.  
Farm Furbee & Highley Acres 32  
Location (waters) Wiley Fork  
Well No. 211 Elev. 1131  
District Grant County Wetzel  
The surface of tract is owned in fee by See below  
Address \_\_\_\_\_  
Mineral rights are owned by See Below  
Address \_\_\_\_\_  
Drilling commenced 5-18-11  
Drilling completed 7-19-11  
Date Shot \_\_\_\_\_ From \_\_\_\_\_ To \_\_\_\_\_  
With \_\_\_\_\_  
Open Flow \_\_\_\_\_ /10ths Water in \_\_\_\_\_ Inch  
1/10ths Merc. in 6-5/8 Inch  
Volume \_\_\_\_\_ Cu. Ft.  
Rock Pressure 2844 m lbs. \_\_\_\_\_ hrs.  
Oil \_\_\_\_\_ bbls., 1st 24 hrs.  
Fresh water \_\_\_\_\_ feet \_\_\_\_\_ feet  
Salt water 1720 feet \_\_\_\_\_ feet

Casing and Tubing	Used in Drilling	Left in Well	Packers
Size			Kind of Packer
16			
13			
10	<u>235</u>	<u>None</u>	Size of _____
8 1/4	<u>1312</u>	<u>None</u>	
6 5/8	<u>1775</u>	<u>1775</u>	Depth set _____
5 3/16	<u>2117</u>	<u>2117</u>	
3	<u>2912</u>	<u>2912</u>	Perf. top _____
2			Perf. bottom _____
Liners Used			Perf. top _____
			Perf. bottom _____

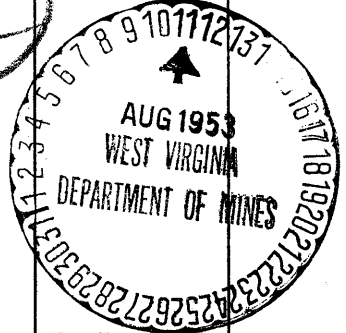
CASING CEMENTED \_\_\_\_\_ SIZE \_\_\_\_\_ No. Ft. \_\_\_\_\_ Date \_\_\_\_\_

COAL WAS ENCOUNTERED AT 730 FEET \_\_\_\_\_ INCHES  
832 FEET \_\_\_\_\_ INCHES FEET \_\_\_\_\_ INCHES  
FEET \_\_\_\_\_ INCHES FEET \_\_\_\_\_ INCHES

Formation	Color	Hard or Soft	Top	Bottom	Oil, Gas or Water	Depth Found	Remarks	
Mapleton Coal			725	730				
Pittsburgh Coal			832	838				
					Water	1720		
Big Injun Sand			2117	2330	Gas	2146		
Gordon Stray			2870	2900				
Gordon Sand			2932	2970	Gas	2966		
4th Sand			2990		Gas	2991-2998		
			Total Depth				3004	

Surface and Mineral Rights are owned by:

Mary H. Furbee and Mary H. Furbee, R. D. Furbee and Howard R. Furbee, Trustees of the Estate of W. S. Furbee, Deceased, Mannington, W. Va.



JAN 2 1954

Formation	Color	Hard or Soft	Top	Bottom	Oil, Gas or Water	Depth Found	Remarks
				X			

Date August 10, 19 53

APPROVED Carnegie Natural Gas Company, Owner

By B. W. Archer  
 (Title) Land Agent